

SHASTA LIGHTNING

CA SHU 005594

AUGUST 9, 2009 0700-0700

YOUR SAFE ACTIONS SET THE EXAMPLE

S
A
F
E
T
Y

I
T
'
S

Driving

Slow down. Lights on. Follow the traffic plan.

Snags

**Isolate DANGER TREES with flagging
and advise Division Sup.**

U
P

Hydration

**Hotter and drier than last shift. Drink more
water**

T
O

Personal Hygiene

Hand washing helps control germs

Y
O
U
!

Accountability

**Supervisors are responsible for their
Personnel/resources.**

S
A
F
E
T
Y

S
A
F
E
T
Y

INCIDENT OBJECTIVES	1. Incident Name SHU Lightning Complex	2. Date 08/08/09	3. Time 1700
4. Operational Period August 9, 2009 0700 - 0700			
<p>5. General Control Objectives for the Incident (include alternatives)</p> <p style="text-align: center;">INCIDENT MANAGEMENT OBJECTIVES</p> <ul style="list-style-type: none"> • Provide for firefighter and public safety. • Provide for initial attack within Eastern Shasta County. • Keep costs commensurate with values at risk. • Provide accurate and timely information to the public, media, and cooperating agencies. • Communicate with cooperators regarding impacts from the fires to the surrounding communities and the assets at risk. • Minimize fire suppression impacts to cultural resources, protected species, and riparian areas <p style="text-align: center;">INCIDENT CONTROL OBJECTIVES</p> <ul style="list-style-type: none"> • Incident Control Objectives are listed on the ICS 204s for each Branch 			
6. Weather Forecast for Period SEE ATTACHED WEATHER FORECAST			
7. General Safety Message SEE ATTACHED SAFETY MESSAGE			
8. Attachments (mark if attached)			
<input checked="" type="checkbox"/> Organization List - ICS 203 <input checked="" type="checkbox"/> Div. Assignment Lists - ICS 204 <input checked="" type="checkbox"/> Communications Plan - ICS 205	<input checked="" type="checkbox"/> Medical Plan - ICS 206 <input checked="" type="checkbox"/> Incident Map <input checked="" type="checkbox"/> Traffic Plan	<input checked="" type="checkbox"/> (Other) WEATHER FORECAST <input type="checkbox"/> <input type="checkbox"/>	
9. Prepared by (Planning Section Chief) Phyllis Banducci	10. Approved by (Incident Commander) Doug Wenham		

ORGANIZATION ASSIGNMENT LIST			9. Operations Section	
1. Incident Name	SHU Lightning Complex		Chief	B.Gouvea/E.Ullman
2. Date	8/8/2009	3. Time	2300	Deputy
4. Operational Period	8/9/2009	0700-0700		
5. Incident Commander and Staff			G. Goose Branch	
Incident Commander	D. Wenham		Branch Director	M. Brunton
Deputy	J. Sisneros		Division D	J. Benguerel
Safety Officer	L. Green - J. Mathias(T)		Division E	B. Stoffel
Information Officer	S. Lauderdale		Division F	A. Moreno
Liaison Officer	J. Terpstra - S. Jones (T)		Division N	T. Lubas
6. Agency Representative			b. Chalk Branch	
Agency	Name		Branch Director	P. Bailey- T. Patton (T)
Shasta Co Sheriff	D. Dean		Division T	R. Gesner- J. Maxwell (T)
Hat CreekLNF Rd	M. Price		Division V	R. Reeder
CDCR	Lt M. Ahlin		Division W	T. Townsend
CAL EMA	D. Tinnel		Division X	J. Sjolund
BLM	J. Martinez		c. Cassel Branch	
			Branch Director	S. Todd
			Division A	J. Morris
			Division C/Y	J. Weber
			d. Gomez Division	
			Division	D. Ray
7. Planning Section			e. Burney LCA	
Chief	S. Griffis - P. Banducci (T)		Branch Director	J. Mobley
Deputy			Big Bend Group	B. Thomas
Resource Unit	G. Schultz - D. Hall (T)		1-18 Group	D. Hawks
Situation Unit	E. Hucks - D.Gordon (T) - S.Johnson (T)		1-34 Group	D. Gaddy
Documentation Unit	G. Schultz		f. Fire Suppression Repair Group	
Demobilization Unit	R. Wedel - D. Pucci (T)		Group	A. Wyman
Human Resources				
Technical Specialists	(name / specialty)		g. Branch	
M. McKey / Training	K.DeSena/GISS		Branch Director	
J. Turner - E. Kurtz/FBAN	S. Estes/Motels		Division/Group	
J.Tonkin/IMET	H. Love/Crew Tech Spec		h. Air Operations Branch	
R.Carr-J. Roberson/Hired Equipment			Air Operations Branch Director	D.Reese - A. Lujan(T)
L. Pollack - S. Velasques/Arch			Air Support Supervisor	N. Truax - M.Wright (T)
8. Logistics Section			Air Attack Supervisor	S. Brockman-B. Reed (T)
Chief	D. Pedersen - K. Lowe (T)		Helicopter Coordinator	R.Yniguez - J.Serrano (T)
Deputy			Helicopter Coordinator	
Service Branch Dir.			10. Finance Section	
Support Branch Dir.			Chief	W.Darnall
Supply Unit	M. Jarske - J. Walls (T)		Deputy	
Facilities Unit	E. Solis		Time Unit	T. Crespin
Ground Support Unit	S. Weir - C. Simmons		Procurement Unit	H. Keene
Communications Unit	T. Webb		Comp/Claims Unit	
Medical Unit	J. Vanatta		Cost Unit	S.Kavanaugh
Security Unit				
Food Unit	S. Ortiz			
			Prepared by (Resource Unit Leader)	
			R. Gladwin	



CAL FIRE INCIDENT COMMAND TEAM 1



UNIT/ACTIVITY LOG ICS 215A Rev. 06-09	1. INCIDENT NAME: SHASTA LIGHTNING COMPLEX	2. DATE PREPARED: August 8, 2009	3. TIME PREPARED: 1830 HR
--	--	--	-------------------------------------

4. PREPARED BY: HERB LOVE SOF1 (T)	5. LEADER NAME: LINDA GREEN, ISO TEAM 1	6. OPERATIONAL PERIOD: 8/9/2009 TO 8/10/2009	
--	---	--	--

INCIDENT RISK ANALYSIS - WILDLAND FIRES

DIVISION	HAZARDOUS ACTIONS / CONDITIONS	MITIGATIONS / WARNINGS / REMEDIES
GOOSE CHALK	SNAG HAZARDS (Includes Utility Poles) DOWNHILL FIRE LINE FIRING OPERATIONS DRIVING HAZARDS HYDRATION	Follow Hazard Tree Safety Guidelines (IRPG p. 80). Steep/rocky terrain: watch footing/maintain spacing. Establish LCES prior to burning operations. Increase following distances & slow down. Drinking water before, during and after shifts.
CASSEL	SNAG HAZARDS (Includes Utility Poles) FIRING OPERATIONS DRIVING HAZARDS HYDRATION SUPPPRESSION REPAIR ACTIVITY	Follow Hazard Tree Safety Guidelines (IRPG p. 80). Conduct thorough briefing for all personnel Increase following distances & slow down. Drinking water before, during and after shifts. Conduct thorough briefing for all personnel.
GOMEZ	SNAG HAZARDS (Includes Utility Poles) DRIVING HAZARDS FATIGUE HYDRATION SUPPPRESSION REPAIR ACTIVITY	Follow Hazard Tree Safety Guidelines (IRPG p. 80). Drive defensively! Headlights on. Crews working long hours with little relief & support. Drinking water before, during and after shifts. Conduct thorough briefing for all personnel.
BURNEY LCA	FIRE BEHAVIOR LINE CONSTRUCTION HYDRATION WEATHER DRIVING HAZARDS	Base all actions on current/expected fire behavior. Ensure LCES in place. Drinking water before, during and after shifts. Access to weather & fire behavior forecasts? Be alert for other drivers, civilians, & wildlife.

FIRE BEHAVIOR FORECAST

FORECAST NUMBER 06	TYPE OF FIRE SURFACE
FIRE NAME SHU LIGHTNING COMPLEX	OPERATIONAL PERIOD August 09, 2009
DATE ISSUED August 08, 2009	TIME ISSUED 7:00
UNIT Shasta Ranger Unit	SIGNED <i>[Signature]</i> 5/11 Jim Turner/Eric Kurtz

WEATHER SUMMARY

SKY/WEATHER... CLEAR... EXCEPT FOR SMOKE.
MAX TEMPERATURE... 85* IN THE VALLEY TO 80* ON THE SLOPES AND RIDGE TOPS
MIN HUMIDITY 16% IN THE VALLEY TO 22% ON THE RIDGES WITH POOR TO MODERATE RECOVERY IN THE PM TO EARLY AM HOURS
GEOGRAPHICAL TREND... WARMING AND DRYING, WINDS BECOMING NORTHWEST IN THE AFTERNOON.
LAL... 0
CHANCE OF DRY LIGHTNING... 0%
CHANCE OF WETTING RAIN... 0%

FIRE BEHAVIOR INPUTS

FINE DEAD FUEL MOISTURE = 5 TO 8% DEPENDING ON FUEL SHADING
1000 HR FUEL MOISTURE = 8% (KILN DRY LUMBER = 12%)
PROBABILITY OF IGNITION = 45 TO 60%
SPOTTING DISTANCE = 0.5 MILES FROM SINGLE TREE TORCHING MIDSLOPE.

NOTE POST LOOKOUTS TO RECORD AND ADVISE OPERATIONS OF CRITICAL FIRE WEATHER CHANGES.

SPECIFIC

CREWS MAY EXPERIENCE SIGNIFICANT FIRE RUNS IN THE MID AFTERNOON STARTING AROUND 1300 HRS. ACTIVE FIRE MOVEMENT IS BY SLOPE AND WIND ALIGNMENT, WITH FIREBRANDS CASTING DOWNWIND AND ROLLOUTS ON STEEP SLOPES. THIS TYPE OF RUN MAY EXCEED 10 CHAINS PER HOUR IN THE BRUSH/TIMBER OVERSTORY AND 8 FOOT FLAME LENGTHS: MAXIMUM SPOTTING DISTANCES OF 0.5 MILES. RUNS IN TIMBER LITTER MAY RESULT IN RATE OF SPREAD (ROS) OF 6 CHAINS PER HOUR 2 TO 3 FOOT FLAME LENGTHS. DEAD & DOWNED FUELS ARE VERY RECEPTIVE FUEL BEDS FOR EMBERS. LIVE FUEL MOISTURES IN BRUSH ARE 84% (80% IS CRITICAL IN MANZANITA). BACKING FIRES BURNING ON THE LEEWARD SIDE OF THE SLOPE ARE BEING FUELED BY GROUND LITTER AND HAVE A SLOWER RATE OF SPREAD. STEEP TERRAIN AND ROLL-OUT PRESENT A HAZARD TO THE LINE. FINE DEAD FUEL MOISTURES WILL BE AT THE LOWEST FROM 1400-1800 HRS. RANGING BETWEEN 5-8%. AREAS OF DIRTY BURN EXIST THROUGHOUT ALL FIRES AND HAVE THE POTENTIAL FOR REBURN IF WINDS BEGIN TO SHIFT OR A NEW START OCCURS.

AIR OPERATIONS

- VISIBILITY MAYBE IMPARED DUE TO THE LACK OF TRANSPORT WINDS IN THE AFTERNOON HOURS.

SAFETY

- CREWS NEED TO CONTINUE PAYING CLOSE ATTENTION FOR HIDDEN SPOT FIRES IN ALL FUEL BED TYPES
- WEAKENED SNAGS MAY FALL ACROSS CONTAINMENT LINES.
- STEEP TERRAIN AND UNDERSLUNG LINE MAY CAUSE ROLL-OUTS ACROSS CONTAINMENT LINES.
- DOWNED HEAVY FUELS MAY CONTAIN HIDDEN POCKETS OF BURNING MATERIAL.



SHU Complex Incident Weather Forecast

FORECAST NO: 6
PREDICTION FOR: Sunday Day Shift

NAME OF FIRE: SHU Complex
UNIT: CA-SHU 5594

SHIFT DATE: Aug 9th, 2009
FORECAST ISSUED: 1900 August 8th, 2009

Incident Meteorologist: Jeff Tonkin

WEATHER DISCUSSION: A ridge of high pressure over northern California will maintain a warming and drying trend through the weekend...accompanied by a stable airmass. Light winds will account for widespread smoke and hazy sky conditions. Surface winds will mainly be terrain driven or out of the northwest...while ridge top and smoke transport winds remain out of the northwest.

WEATHER FORECAST SUNDAY DAY SHIFT:

WEATHER: Clear...except for smoke and haze.

LIGHTNING ACTIVITY LEVEL: 1 **CHANCE OF WETTING RAIN:** 0%

TEMPERATURES: 80 - 85 valleys/drainages...73 - 78 upper slopes/ridges.

MIN HUMIDITY: 16 - 21% valleys/drainages. 22 - 27% upper slopes/ridges.

WINDS (20 FOOT):

RIDGETOP - Northwest 3 - 6 mph...gusts to 10 to 14 mph in the afternoon.
Winds diminishing around sunset.

LOWER ELEVATION/DRAINAGE - Northwest or Upslope/Upcanyon 3 - 7 mph...Gusts to 15 mph
from 1300 to 1700 PDT.

STABILITY / INVERSION: Stable with very little mixing.

WEATHER FORECAST TONIGHT:

WEATHER: Clear skies.

MIN TEMPERATURES: 43 - 48. 47 - 53 in thermal belt.

MAX HUMIDITY: 57 - 64%.

WINDS (20 FOOT):

RIDGETOP - Northwest 3 to 6 mph until 2300...then becoming East or Northeast 2 to 4 mph
through 1000 Local.

VALLEY - West 3 to 6 mph until 2300...then east or down-slope 2- 4 mph through 1000 local.

OUTLOOK FOR MONDAY: Sunny and hot. Temps: 86 - 92. Min RH: 16-20%. Wind: West and Northwest 3 to 6 mph...gusts 10 to 12 mph in the afternoon.

EXTENDED FORECAST FOR TUESDAY THROUGH THURSDAY: Near or slightly above normal temperatures and remaining dry. West wind...8 to 14 mph gusts to 20 mph in the afternoon. Max temps 83-89 valleys...76-83 ridges. Min RH 20% valley...20-25% ridge.

DIVISION ASSIGNMENT LIST			1. Branch Goose		2. Division/Group N (Page 1)		
3. Incident Name SHU Lightning Complex			4. Operational Period Date: 8/9/09 – 8/10/09 Time: 0700-0700				
5. Operations Personnel							
Operations Chief		Gouvea / Ullman (N)		Division/Group Supervisor		Lubas	
Branch Director		Brunton		Air Attack Supervisor No.			
6. Resources Assigned this Period							
Strike Team/Task Force/ Resource Designator	Leader	Number Persons	Trans. Needed	Drop Off PT./Time	Pick Up PT./Time		
SOFL	Lindgren	1		DP 33	0700		
SOFL	Lawson	1		DP 33	0700		
FELB	Markley	1		DP 33	0700		
DOZB	Mattson	1		DP 33	0700		
DOZB	Gadbury	1		DP 33	0700		
FALC	Hodgson	1		DP 33	0700		
FALC	Anderson	1		DP 33	0700		
ST XMR 2104C	Galli	19		DP 33	0700		
ST XME 2150C	Thomsen	19		DP 33	0700		
ST HUU 9121C	Ellis	23		DP 33	0700		
ST BTU 9211C	Harter	16		DP 33	0700		
ST LNU 9146G	Juarez	35		DP 33	0700		
ST BDU 9370G	Thomas	33		DP 33	0700		
ST BDU 9388G	Wight	31		DP 33	0700		
CRW Sugar Pine 3	Telles	16		DP 33	0700		
ST MMU 9428L	Daly	6		DP 33	0700		
DOZ HUU 1242	Gardner	2		DP 33	0700		
DOZ LNU 1448	Weise	2		DP 33	0700		
7. Control Operations Improve and hold line. Look for new spots and possible burnout opportunities. Keep fire North of Goose Mtn., East of Big Bend Rd., South of Pit River, West of Pit 3 Dam.							
8. Special Instructions Bottles and cans to be placed in bags separate from trash. Place at designated location by Supply or by dumpsters in camp. Back haul all trash and place in dumpsters in Camp.							
9. Division/Group Communication Summary							
Function	Frequency	System	Channel	Function	Frequency	System	Channel
Command	Rx 151.175W Tx 159.450W	King NIFC	CDF CMD 9 Tone 9	Logistics	154.4525N	King NIFC	V Tac-12
Tactical Div/Group	166.725 N	King NIFC	NIFC Tac-5	Air to Ground	151.220	King NIFC	CDF A/G
Prepared by (Resource Unit Ldr.) Gabriel Schultz		Approved by (Planning Sect. Ch.) <i>Phyllis Budwig</i>			Date 8/8/09		Time 2000

DIVISION ASSIGNMENT LIST		1. Branch Chalk		2. Division/Group T			
3. Incident Name SHU Lightning Complex		4. Operational Period Date: 8/9/09-8/10/09 Time: 0700-0700					
5. Operations Personnel							
Operations Chief	Gouvea / Ullman (N)	Division/Group Supervisor		Gesner-Maxwell (T)			
Branch Director	Bailey-Patten (T)	Air Attack Supervisor No.					
6. Resources Assigned this Period							
Strike Team/Task Force/ Resource Designator	Leader	Number Persons	Trans. Needed	Drop Off PT./Time	Pick Up PT./Time		
SOFL	McMillen	1		Big Bend Fire Station	0800		
SOFL	Stangeland	1		Big Bend Fire Station	0800		
FELB	Kramer	1		Big Bend Fire Station	0800		
FALC	Bell-Starr (T)	2		Big Bend Fire Station	0800		
FALC	Loerzel	1		Big Bend Fire Station	0800		
FALC	Blackburn	1		Big Bend Fire Station	0800		
FOBS	McDaniel	1		Big Bend Fire Station			
FOBS (T)	Opie	1		Big Bend Fire Station			
ST MEU 9112G	Orme	33		Big Bend Fire Station	0800		
ST HUU 9123G	Rodgers	33		Big Bend Fire Station	0800		
ST CZU 9174G	Cope	33		Big Bend Fire Station	0800		
ST NEU 9232G	Rodriguez	31		Big Bend Fire Station	0800		
ST SHU 9242G	Miles	33		Big Bend Fire Station	0800		
ST TGU 9254G	Blanco	33		Big Bend Fire Station	0800		
*CRW Diamond Mt. HS	Varney	19		Big Bend Fire Station	0800		
ST LNU 9147L	Head	6		Big Bend Fire Station	0800		
DOZ NEU 2344	Devery	2		Big Bend Fire Station	0800		
DOZ SHU 2440	Westrip	2		Big Bend Fire Station	0800		
7. Control Operations Finish and improve line. Fire from Chalk Mountain to Blackberry Ridge. *Diamond Mt. HS will be Firing Group. Keep fire North of River Road, South of 37N30 Rd., East of Blackberry Ridge, and West of Pit 3 Dam.							
8. Special Instructions Beware of spotting and post lookouts. Bottles and cans to be placed in bags separate from trash, place at designated locations by Supply or by dumpsters in camp. Backhaul all trash & place in dumpsters in Camp.							
9. Division/Group Communication Summary							
Function	Frequency	System	Channel	Function	Frequency	System	Channel
Command	Rx 151.175W Tx 159.450W	King NIFC	CDF CMD 9 Tone 9	Logistics	159.4725	King NIFC	V Tac-14
Tactical Div/Group	154.265 W	King NIFC	White Fire -2	Air to Ground	151.220	King NIFC	CDF A/G
Prepared by (Resource Unit Ldr.) Gabriel Schultz		Approved by (Planning Sect. Ch.) <i>Phyllis Banucci</i>		Date 8/8/09		Time 2300	

DIVISION ASSIGNMENT LIST		1. Branch Chalk		2. Division/Group V			
3. Incident Name SHU Lightning Complex		4. Operational Period Date: 8/9/09-8/10/09 Time: 0700-0700					
5. Operations Personnel							
Operations Chief	Gouvea / Ullman (N)	Division/Group Supervisor		Reeder			
Branch Director	Bailey-Patten (T)	Air Attack Supervisor No.					
6. Resources Assigned this Period							
Strike Team/Task Force/ Resource Designator	Leader	Number Persons	Trans. Needed	Drop Off PT./Time	Pick Up PT./Time		
SOFL	Bair	1		Big Bend Fire Station	0800		
SOFL	Demattei	1		Big Bend Fire Station	0800		
ST MMU 9420C	Quinn	21		Big Bend Fire Station	0800		
CRW Sugar Pine 1	Redding	16		Big Bend Fire Station	0800		
GRDR SHU Stan Leach	Leach	2		Big Bend Fire Station	0800		
7. Control Operations Mop-up 200 feet in. Keep fire North of River Road, South of 37N30 Rd., East of Blackberry Ridge, and West of Pit 3 Dam.							
8. Special Instructions Beware of spotting and post lookouts. Bottles and cans to be placed in bags separate from trash, place at designated locations by Supply or by dumpsters in Camp.							
9. Division/Group Communication Summary							
Function	Frequency	System	Channel	Function	Frequency	System	Channel
Command	Rx 151.175W Tx 159.450W	King NIFC	CDF CMD 9 Tone 9	Logistics	159.4725	King NIFC	V Tac-14
Tactical Div/Group	173.9875	King NIFC	USFS R-5 T-6	Air to Ground	151.220	King NIFC	CDF A/G
Prepared by (Resource Unit Ldr.) Gabriel Schultz		Approved by (Planning Sect. Ch.) <i>Phyllis Barducci</i>		Date 8/8/09		Time 2300	

DIVISION ASSIGNMENT LIST		1. Branch Chalk		2. Division/Group W			
3. Incident Name SHU Lightning Complex		4. Operational Period Date: 8/9/09-8/10/09 Time: 0700-0700					
5. Operations Personnel							
Operations Chief	Gouvea / Ullman (N)	Division/Group Supervisor		Townsend – Ochoa (T)			
Branch Director	Bailey-Patten (T)	Air Attack Supervisor No.					
6. Resources Assigned this Period							
Strike Team/Task Force/ Resource Designator	Leader	Number Persons	Trans. Needed	Drop Off PT./Time	Pick Up PT./Time		
SOFL	Piccinini	1		Big Bend Fire Station	0800		
FELB	McGregor	1		Big Bend Fire Station	0800		
FALC	Seaborn	1		Big Bend Fire Station	0800		
FALC	Edwards	1		Big Bend Fire Station	0800		
FOBS	Beroheisel	1		Big Bend Fire Station	0800		
FOBS (T)	Cowles	1		Big Bend Fire Station	0800		
ST MEU 9111C	Howard	16		Big Bend Fire Station	0800		
ST BTU 9210C	Haile	22		Big Bend Fire Station	0800		
CRW SHU SP4	Mancebo	16		Big Bend Fire Station	0800		
DOZ Oilar E-33	Beebe	2		Big Bend Fire Station	0800		
WT Northstate E-116	Bowman	2		Big Bend Fire Station	0800		
WT All Agency E-268	Hill	2		Big Bend Fire Station	0800		
WT 570 Big Bend E-301	Green	2		Big Bend Fire Station	0800		
7. Control Operations							
Mop-up 200 feet in.							
Keep fire North of River Road, South of 37N30 Rd., East of Blackberry Ridge, and West of Pit 3 Dam.							
8. Special Instructions							
Bottles and cans to be placed in bags separate from trash placed at designated locations by Supply or dumpsters in camp. Backhaul all trash and place in dumpsters at Camp.							
9. Division/Group Communication Summary							
Function	Frequency	System	Channel	Function	Frequency	System	Channel
Command	Rx 151.175W Tx 159.450W	King NIFC	CDF CMD 9 Tone 9	Logistics	159.4725	King NIFC	V Tac-14
Tactical Div/Group	158.7375	King NIFC	V Tac-13	Air to Ground	151.220	King NIFC	CDF A/G
Prepared by (Resource Unit Ldr.) Gabriel Schultz		Approved by (Planning Sect. Ch.) <i>Phyllis Banducci</i>			Date 8/8/09		Time 2300

DIVISION ASSIGNMENT LIST		1. Branch Burney LCA		2. Division/Group Big Bend Group			
3. Incident Name SHU Lightning Complex		4. Operational Period 12 hour operational period Date: 8/9/09 Time: 0700-1900					
5. Operations Personnel							
Operations Chief	Gouvea / Ullman (N)		Division/Group Supervisor		Thomas		
Branch Director	Mobley		Air Attack Supervisor No.				
6. Resources Assigned this Period							
Strike Team/Task Force/ Resource Designator	Leader	Number Persons	Trans. Needed	Drop Off PT./Time	Pick Up PT./Time		
ENG SHS 570	Hazentine	3		Station 19	0700		
ENG SHU 2463	Thomson	3		Station 19	0700		
WT Cattaneo E-56	Chovesta	2		Station 19	0700		
7. Control Operations Mop-up and patrol known fires Identify and suppress new fires							
8. Special Instructions Bottles and cans to be placed in bags separate from trash, place at designated locations by Supply or by dumpsters in camp. Backhaul all trash & place in dumpsters in Camp. Beware of spotting and post lookouts.							
9. Division/Group Communication Summary							
Function	Frequency	System	Channel	Function	Frequency	System	Channel
Command	Rx 151.175W Tx 159.450W	King NIFC	CDF CMD 9 Tone 9	Logistics	159.4725	King NIFC	V Tac-14
Tactical Div/Group	166.775 N	King NIFC	NIFC Tac-6	Air to Ground	151.220	King NIFC	CDF A/G
Prepared by (Resource Unit Ldr.) Gabriel Schultz		Approved by (Planning Sect. Ch.) <i>Phyllis Bandura</i>		Date 8/8/09		Time 2300	

DIVISION ASSIGNMENT LIST		1. Branch Burney LCA		2. Division/Group Group 1-18			
3. Incident Name SHU Lightning Complex		4. Operational Period 12 hour operational period Date: 8/9/09 Time: 0700-1900					
5. Operations Personnel							
Operations Chief		Gouvea / Ullman (N)		Division/Group Supervisor		Hawks	
Branch Director		Mobley		Air Attack Supervisor No.			
6. Resources Assigned this Period							
Strike Team/Task Force/ Resource Designator		Leader		Number Persons	Trans. Needed	Drop Off PT./Time	Pick Up PT./Time
ENG SHU 2451		Boic		4		Burney Station 14	0700
ENG SHU 2461		Misner		4		Burney Station 14	0700
ENG SHU 2464		Huntsman		3		Burney Station 14	0700
DOZ SHU 2442		Johnson		2		Burney Station 14	0700
WT All States E-40		MacCarty		2		Burney Station 14	0700
7. Control Operations Mop-up and patrol known fires Identify and suppress new fires							
8. Special Instructions Bottles and Cans to be placed in bags separate from trash, place at designated locations by supply or by dumpsters in camp. Backhaul all trash & place in dumpsters in camp. Beware of spotting and post lookouts.							
9. Division/Group Communication Summary							
Function	Frequency	System	Channel	Function	Frequency	System	Channel
Command	Rx 151.175W Tx 159.450W	King NIFC	CDF CMD 9 Tone 9	Logistics	159.4725	King NIFC	V Tac-14
Tactical Div/Group	166.775 N	King NIFC	NIFC Tac-6	Air to Ground	151.220	King NIFC	CDF A/G
Prepared by (Resource Unit Ldr.) Gabriel Schultz		Approved by (Planning Sect. Ch.) <i>Phyllis Banducci</i>			Date 8/8/09		Time 2300

DIVISION ASSIGNMENT LIST		1. Branch Burney LCA		2. Division/Group Group 1-34			
3. Incident Name SHU Lightning Complex		4. Operational Period Date: 8/9/09		12 hour operational period Time: 0700-1900			
5. Operations Personnel							
Operations Chief		Gouvea / Ullman (N)		Division/Group Supervisor		Gaddy	
Branch Director		Mobley		Air Attack Supervisor No.			
6. Resources Assigned this Period							
Strike Team/Task Force/ Resource Designator	Leader		Number Persons	Trans. Needed	Drop Off PT./Time		Pick Up PT./Time
Tech Spec	Hollister/Karlowsky(T)		2		Burney Station 14		0700
ENG SHU 2462	Lazzari		3		Burney Station 14		0700
ENG SHU 2478	Hill		4		Burney Station 14		0700
WT MHS 4630 E-228	Haistings		4		Burney Station 14		0700
7. Control Operations Mop-up and patrol known fires Identify and suppress new fires							
8. Special Instructions Bottles and cans to be placed in bags separate from trash, place at designated locations by Supply or by dumpsters in camp. Backhaul all trash & place in dumpsters in Camp.							
9. Division/Group Communication Summary							
Function	Frequency	System	Channel	Function	Frequency	System	Channel
Command	Rx 151.175W Tx 159.450W	King NIFC	CDF CMD 9 Tone 9	Logistics	159.4725	King NIFC	V Tac-14
Tactical Div/Group	166.775 N	King NIFC	NIFC Tac-6	Air to Ground	151.220	King NIFC	CDF A/G
Prepared by (Resource Unit Ldr.) Gabriel Schultz		Approved by (Planning Sect. Ch.) <i>Phyllis Bandueca</i>			Date 8/8/09		Time 2300

DIVISION ASSIGNMENT LIST			1. Branch		2.. Division/Group Fire Suppression Repair Group		
3. Incident Name SHU Lightning Complex			4. Operational Period 12 hour operational period Date: 8/9/09 Time: 0700-1900				
5. Operations Personnel							
Operations Chief		Gouvea / Ullman (N)		Division/Group Supervisor		Wyman	
Branch Director				Air Attack Supervisor No.			
6. Resources Assigned this Period							
Strike Team/Task Force/ Resource Designator	Leader	Number Persons	Trans. Needed	Group Assignments	Pick Up PT./Time		
DOZB	Bloom	1		Goose Branch	0800		
WT B&G E-118	Brock/Jarrett	2		Goose Branch	0800		
WT Hoaglan E-241	Hoaglan	2		Goose Branch	0800		
WT Stotts E-269	Stottsberry	2		Goose Branch	0800		
Suppression Repair	Kendrick	1		Cassel Branch	0800		
BLM Resource Advisor	Kosic	1		Cassel Branch	0800		
BLM Resource Advisor	Johnson	1		Cassel Branch	0800		
BLM Resource Advisor	Cann	1		Cassel Branch	0800		
FOBS	Hill	1		Cassel Branch			
FOBS (T)	Harvey	1		Cassel Branch	0800		
DOZ Carlton E-22	Carlton	2		Cassel Branch	0800		
DOZ Oilar E-32		2		Cassel Branch	0800		
DOZ Strieff E-58		2		Cassel Branch	0800		
DOZ Hagen E-59	Hagen	2		Cassel Branch	0800		
DOZ Hagen E-60	Poe	2		Cassel Branch	0800		
DOZ Caldwell E-285	Caldwell/Spoon	2		Cassel Branch	0800		
WT Zabel E-240	Zabel	2		Cassel Branch	0800		
FOBS	Green	1		Gomez Branch	0800		
FOBS	McBride	1		Gomez Branch	0800		
ST LNU 9144 L	Vierra	5		Gomez Branch	0800		
Archaeologist	Pollack			Gomez Branch	0800		
7. Control Operations Assess fire suppression repair needs. Water bar fire lines. Water roads as needed.							
8. Special Instructions Contact each Branch and Division upon arrival and departure. Bottles and cans to be placed in bags separate from trash. Place at designated location by Supply or by dumpsters in camp. Back haul all trash and place in dumpsters in Camp.							
9. Division/Group Communication Summary							
Function	Frequency	System	Channel	Function	Frequency	System	Channel
Command	Rx 151.175W Tx 159.450W	King NIFC	CDF CMD 9 Tone 9	Logistics	159.4725	King NIFC	V Tac-14
Tactical Div/Group	168.050 N	King NIFC	NFCI Tac-1	Air to Ground	151.220	King NIFC	CDF A/G
Prepared by (Resource Unit Ldr.) Gabriel Schultz		Approved by (Planning Sect. Ch.) <i>Phyllis Banducci</i>			Date 8/8/09		Time 2000

Immediate Need Firing Operation Checklist

Location: _____

Date: _____

Time: _____

Firing Supervisor _____

1. Personnel Briefing

- Objectives
- Conditions (weather, fuel, burn window)
- Resource assignments
 - firing personnel
 - holding forces
 - lookouts
- Ignition plan/sequence
- Communication Plan
- Contingency Plan
- Safety issues

2. GO / NO-GO

- | | |
|--|--|
| <input type="checkbox"/> All personnel briefed | <input type="checkbox"/> Communications systems in place |
| <input type="checkbox"/> Weather forecast reviewed | <input type="checkbox"/> Fire behavior forecast reviewed |
| <input type="checkbox"/> Resources in place | <input type="checkbox"/> Escape routes and safety zones established and made known |
| <input type="checkbox"/> Lookouts posted as needed | <input type="checkbox"/> Adjoining forces/Air Attack notified |
| <input type="checkbox"/> Anchor and termination firing points identified | |

3. APPROVAL PRIOR TO FIRING

4. NOTIFICATION PRIOR TO FIRING

AIR OPERATIONS SUMMARY

OPERATIONAL PERIOD DATE: DAY SHIFT DATE: 08/09/09

START: 0830 END: 1943

(Expanded Form for Large Operations)

1. INCIDENT NAME: Shasta Lightning Complex	2. PREPARED BY: A.Lujan	PREPARED DATE/TIME: 08/08/09 1900
---	-------------------------	-----------------------------------

4. REMARKS (Safety Notes, Hazards, Air Operations Special Equipment,, etc.):

SUNRISE: 0620

SUNSET : 2016

5. TFR:

All GPS data to be collected (degrees, minutes & decimal minutes)

**Avoid aerial application of retardant or foam within 300' of waterways, bodies of water. If retardant is dropped within these areas, notify

AOBD with Lat & Long, est. of gallons, and a map.

1. Notam 9/3026

TRACK RETARDANT DROP LOCATIONS

6. PERSONNEL	Phone	7. REQUENCIES	AM	FM	8. FIXED-WING # Avail / Type/ Make-Model / FAA N# / Base(s)
AOBD: Alex Lujan (T)	530-598-2645	AIR/AIR FW:	128.250	170.4625	Air Tactical AA-240 AA-500 Lead planes Airtankers 3 Type 1 5 Type 3 Other : Gel Plant 127.025 40° 59.876 121°49.183
AOBD: Dan Reese	707-391-6784				
ATGS: Scott Brockman	530-226-2695	AIR/AIR RW:	S 127.025 N 128.675	151.220	
ATGS: Crystal Henson					
HLCO: R Yniguez, B Reid (T)	530-448-2450	AIR/GROUND:			
HLCO: Scott Upton, J Serrano (T)	707-889-4373				
ASGS: N Truax (T) / M Wright (T)	530-448-2411	DECK:	163.100		
HEBM. Randy Fergosa Scott Corn(T)	530-200-3263 530-227-4887	COMMAND RPT	Command 9 Tone 9		
HLCO: E Gomberg (T)	530-448-2408	Air Guard	168.625		
		TOLC	122.80		

9. HELICOPTERS (Use Additional Sheets As Necessary)

FAA N#	TY	MAKE/MODE	BASE	AVAIL	START	REMARKS	FAA N#	TY	MAKE/MODE	BASE	AVAIL	START	REMARKS
1HM	3	206 L4	FR	0830		HELCO	8GH	3	206 B3	FR	0830		HELCO
FY	1	BV 107	FR	0830									
784	1	S 61	FR	0830			802	1	Chinook	RDD	1200		Guard
96W	1	S 61	FR	0830			840	1	Blackhawk	RDD	0900		Guard
205	2	UH1H	FR	0830			831	1	Blackhawk	RDD	0900		Guard
207	2	UH1H	FR	0830		Standard	217	2	214	FR	0830		
8HM	2	UH1B	FR	0830			6TV	2	UH1H	FR	0830		
							1GH	2	UHIH	FR	0830		
726	3	206 B3	FR	0830		Relief Helco							
3SH	3	206 B3	FR	0830		Recon / Mapping							
C 101	2	205	FR	0830		Medavac/ Short Haul							

INCIDENT RADIO COMMUNICATIONS PLAN			Shasta Lightning Incident			Date/Time Prepared 8/8/2009 - 20:00:00 AM			Operational Period Date/Time 8/9/2009/0700-0700	
Ch #	Function	Channel Name/Trunked Radio System Talkgroup	Assignment	RX Freq N or W	RX Tone/NAC	TX Freq N or W	Tx Tone/NAC	Mode A, D or M	Remarks	
1	Command	CDF Command-1	Not assigned	151.355 W		159.300 W	156.7 (6)	A	Not assigned	
2	Command	CDF Command-9	Command	151.175 W		159.450 W	100.0 (9)	A	Grp 3 Ch.9	
3	Command	NIFC Cmnd-22		165.450 N		172.5125 N	156.7 (6)	A	Not assigned	
4	Tactical	V-Tac 11	Back Bone Branch	151.1375 N		151.1375 N	156.7	A	Grp 3 Ch.146	
5	Tactical	V-Tac 13	Chalk Div.W	158.7375 N		158.7375 N	156.7	A	Grp 3 Ch.148	
6	Tactical	NIFC Tac-5	Goose Branch	166.725 N		166.725 N		A	Grp 3 Ch.103	
7	Tactical	NIFC Tac-6	Burney LCA	166.775 N		166.775 N		A	Grp 3 Ch.104	
8	Tactical	NIFC Tac-7	Gomez Branch	168.250 N		168.250 N		A	Grp 3 Ch.105	
9	Tactical	USFS R-5 T-4	Cassel Branch	173.9125 N		173.9125 N		A	Grp 3 Ch.106	
10	Tactical	USFS R-5 T-5	Cassel Branch	173.9625 N		173.9625 N		A	Grp 3 Ch.107	
11	Tactical	USFS R-5 T-6	Chalk Div. V	173.9875 N		173.9875 N		A	Grp 3 Ch.108	
12	Tactical	White Fire-2	Chalk Div. T	154.265 W		154.265 W		A	Grp 3 Ch.151	
13	Tactical	White Fire-3	Chalk Div. X	154.295 W		154.295 W		A	Grp 3 Ch.152	
14	Tactical	NIFC Tac-1	Fire Sup Repair	168.050 N		168.050 N		A	Grp 3 Ch.99	
15	Tactical	NIFC Tac-3	Not assigned	168.600 N		168.600 N		A	Grp 3 Ch.101	
16	Tactical	V-Tac-12	Goose Div. N	154.4525 N		154.4525 N	156.7	A	Grp 3 Ch.147	
17	Tactical	CDF-A/G	Air to Ground	151.2200 N		151.2200 N		A	Air to Ground Grp3Ch126	
18	Camp/Logistics	V-Tac-14	Logistics	159.4725 N		159.4725 N		A	Base Camp UseGrp3Ch4149	
19	Medical	CALCORD	Medical	156.075 W		156.075 W		A	Medical Emerg. Grp3Ch.144	
20	Emergency	Air Guard	Emergency	168.625 N		168.625 N	110.9	A	Emerg. Air ContactGrp3Ch138	
Prepared By (Communications Unit) Tom Webb COML CALFIRE Team 1					Incident Location County State Latitude N Longitude W					

The convention calls for frequency lists to show four digits after the decimal place, followed by either an "N" or a "W", depending on whether the frequency is narrow or wide band. Mode refers to either "A" or "D" indicating analog or digital (e.g. Project 25) or "M" indicating mixed mode. All channels are shown as if programmed in a control station, mobile or portable radio. Repeater and base stations must be programmed with the Rx and Tx reversed.

MEDICAL PLAN	1. INCIDENT NAME	2. DATE PREPARED	3. TIME PREPARED	4. OPERATIONAL PERIOD
	SHU Lightning	8/8/2009	1530	8/09/09-8/10/09 0700-0700

5. INCIDENT MEDICAL AID STATION

MEDICAL AID STATIONS	LOCATION	PARAMEDICS	
		YES	NO
Incident Base MERT	27571 Mountain View Rd., Burney, CA (Burney High School)	<input checked="" type="checkbox"/>	<input type="checkbox"/>
CAL FIRE Personnel	On engines and at CAL FIRE stations.	<input type="checkbox"/>	<input checked="" type="checkbox"/>
DMAT	Incident Base	<input checked="" type="checkbox"/>	<input type="checkbox"/>
		<input type="checkbox"/>	<input type="checkbox"/>
		<input type="checkbox"/>	<input type="checkbox"/>

6. TRANSPORTATION

A. AMBULANCE SERVICES

NAME	ADDRESS	PHONE	PARAMEDICS	
			YES	NO
Redding ECC	Contact Redding ECC for all air or ground transport	530-225-2411	<input checked="" type="checkbox"/>	<input type="checkbox"/>
Burney Ambulance	Burney, CA (contact SHU ECC)	530-225-2411	<input checked="" type="checkbox"/>	<input type="checkbox"/>
Mayers Memorial Hospital	43563 HWY 299. Mc Arthur, CA	530-336-5511	<input checked="" type="checkbox"/>	<input type="checkbox"/>
			<input type="checkbox"/>	<input type="checkbox"/>
			<input type="checkbox"/>	<input type="checkbox"/>

B. INCIDENT AMBULANCES

NAME	LOCATION	PARAMEDICS	
		YES	NO
	N/A	<input type="checkbox"/>	<input type="checkbox"/>
		<input type="checkbox"/>	<input type="checkbox"/>
		<input type="checkbox"/>	<input type="checkbox"/>
		<input type="checkbox"/>	<input type="checkbox"/>

7. HOSPITALS

NAME	ADDRESS	TRAVEL TIME		PHONE	HELIPAD		BURN CENTER	
		AIR	GRND		YES	NO	YES	NO
Mercy Medical Center	2175 Rosaline Ave Redding CA 96001	15-30min	1-2 hours	530-225-6000	X	<input type="checkbox"/>	<input type="checkbox"/>	X
Shasta Regional Hospital	1100 Butte St., Redding, CA	15-30min	1-2 hours	530-244-5353	X	<input type="checkbox"/>	<input type="checkbox"/>	X
UC Davis	2315 Stockton Blvd., Sacramento, CA	1.5 hours	2.5-3 hours	(916) 734-2130	X	<input type="checkbox"/>	X	
Mayers Memorial	43563 HWY 299. Mc Arthur, CA	15-30min	.5 - 1.5 hours	530-336-5511	X	<input type="checkbox"/>	<input type="checkbox"/>	X
		<input type="checkbox"/>	<input type="checkbox"/>		<input type="checkbox"/>	<input type="checkbox"/>	<input type="checkbox"/>	<input type="checkbox"/>

8. MEDICAL EMERGENCY PROCEDURES

Immediately report all injuries to your immediate supervisor.
Any injury requiring greater care than first aid needs to be reported to your Division/Group Supervisor on Command net
Supervisors be prepared to request needs including:
- Air or Ground Transportation
- Location to meet injured person / any special routing / GPS coordinates if available
- Type of injury
Division/Groups will coordinate transportation or additional needs
Notify Safety Officer for all significant injuries
More significant events (ie major injuries or deaths, burn over, missing persons) require immediate IC & PIO notification
All Air Ambulance LZ coordination will be conducted on CalCord
Any Short Haul procedure will be with Copter 101 coordinated through your Division/Group Supervisor

9. PREPARED BY (MEDICAL UNIT LEADER) Med Unit Leader Jeff Vanatta	10. REVIEWED BY (SAFETY OFFICER) Herb Love
--	---

Contractor/Vendor Performance Evaluation

ICS 230

Incident Name	Order Number	Request Number	Start Date	End Date	
			To		
Shift/Operational Period		Operator	Assignment or Location		

Vendor Name	Vendor Address	Phone and Contact
-------------	----------------	-------------------

Service Commodity Rental Equipment Agreement # _____

Brief description of services/commodity/equipment ordered:

Rating Factors	YES	NO		
1) Gave and Met acceptable ETA/commitment.	<input type="checkbox"/>	<input type="checkbox"/>		
2) Arrived prepared, equipped and ready to work.	<input type="checkbox"/>	<input type="checkbox"/>		
3) Met with assigned supervisor for direction.	<input type="checkbox"/>	<input type="checkbox"/>		
4) Met performance expectations.	<input type="checkbox"/>	<input type="checkbox"/>		
5) Equipment in safe working condition.	<input type="checkbox"/>	<input type="checkbox"/>		
6) Personnel were skilled and operated safely.	<input type="checkbox"/>	<input type="checkbox"/>		
7) Personnel's level of cooperation was acceptable.	<input type="checkbox"/>	<input type="checkbox"/>		
8) Other:	<input type="checkbox"/>	<input type="checkbox"/>		
Overall rating of performance	Poor* <input type="checkbox"/>	Avg <input type="checkbox"/>	Good <input type="checkbox"/>	Exc. <input type="checkbox"/>
Recommendation for Rehire/Reuse:	YES <input type="checkbox"/>		NO <input type="checkbox"/>	

* Any rating of poor requires explanation or comment.
 ** Recommendation of No Reuse requires comment and Logistics Chief concurrence.

Comments: _____

Signature below does not constitute agreement with rating, but that rating was discussed with me.

Vendor Representative Name/Title		Government Rep. Name/Position	
Signature	Date	Signature	Date

Note: Equipment safety/compliance inspections still required, please document separately.
 Distribution: Blue; Original-Incident Packet Canary; Copy-Contractor/Vendor Pink; Copy-Admin Unit

CATERING AND FUEL REPAIR

TO STATION

299 E

SHU LIGHTNING
CA-SHU-005594

FACILITIES MAP

Map not to scale

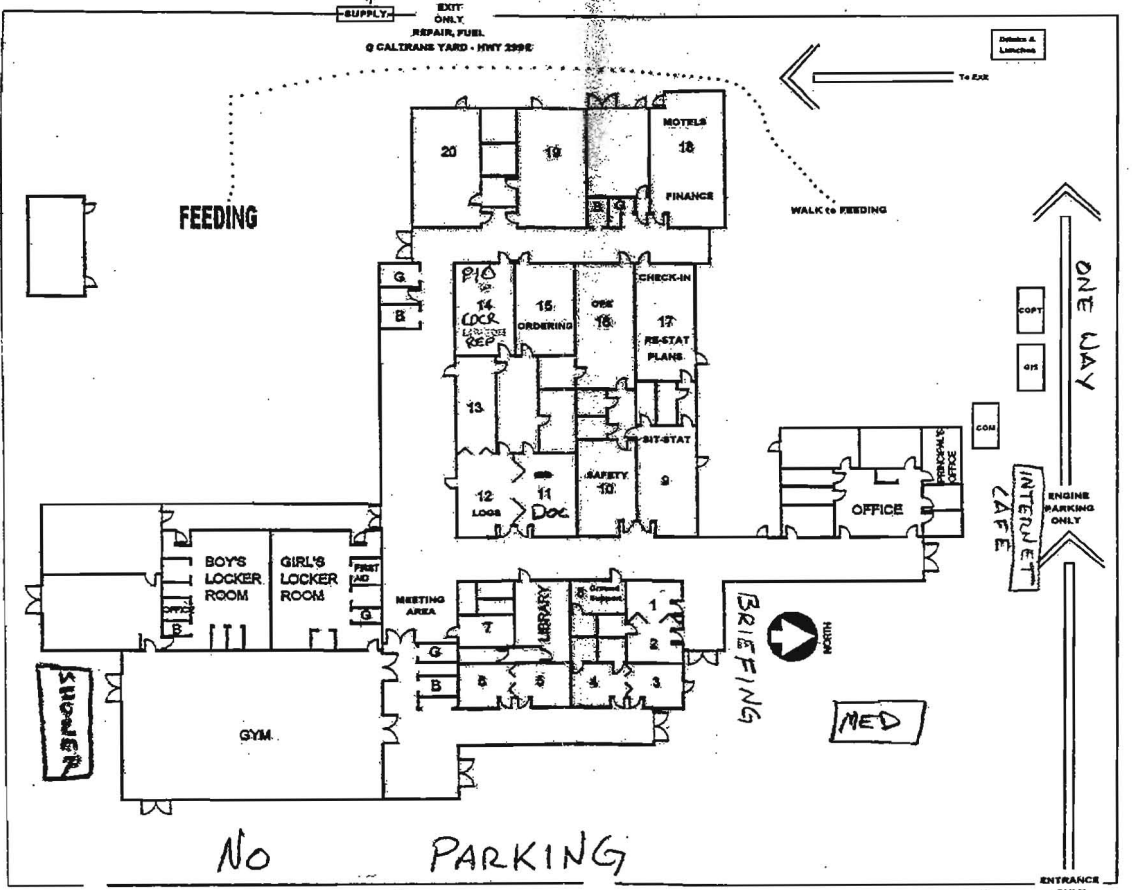
MT. VEIRD

PARKING

QUEBEC
NO PARKING
TALL TIMBER

TORONTO
OVERHEAD PARKING
ONE WAY

TO SUPPLY
AND
SLEEPING
AREA



ACCESS TO FEEDING

FEEDING

WALK TO FEEDING

ONE WAY

ENGINE PARKING ONLY

ENTRANCE ONLY

NO PARKING

FOOTBALL FIELD

ONE WAY

CDCR SLEEPING

CDCR SHOWER

ENGINE / CDCR PARKING

EXIT
MARQUETTE

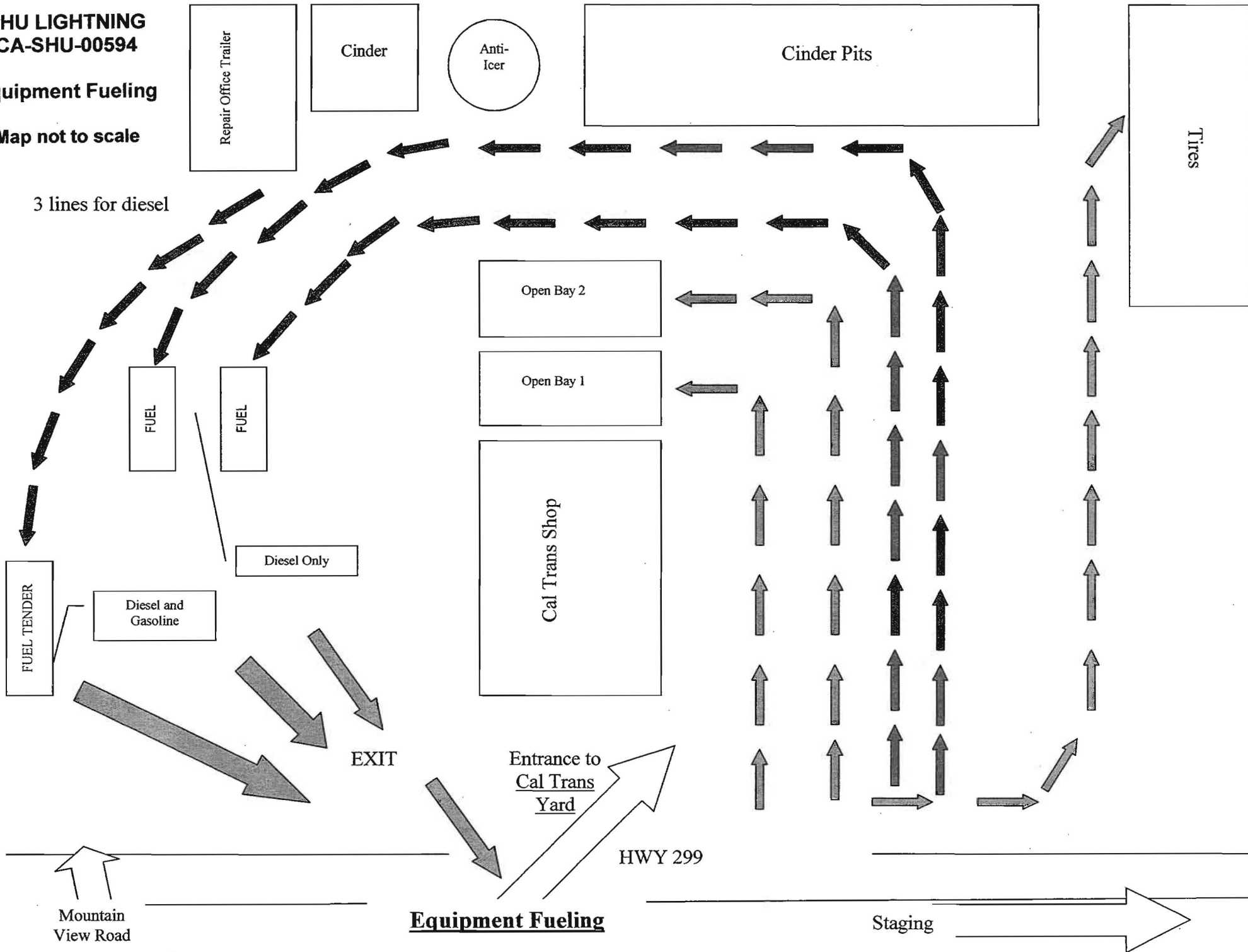
OVER FLOW ENGINE PARKING
BAILEY
ONE WAY

EXIT

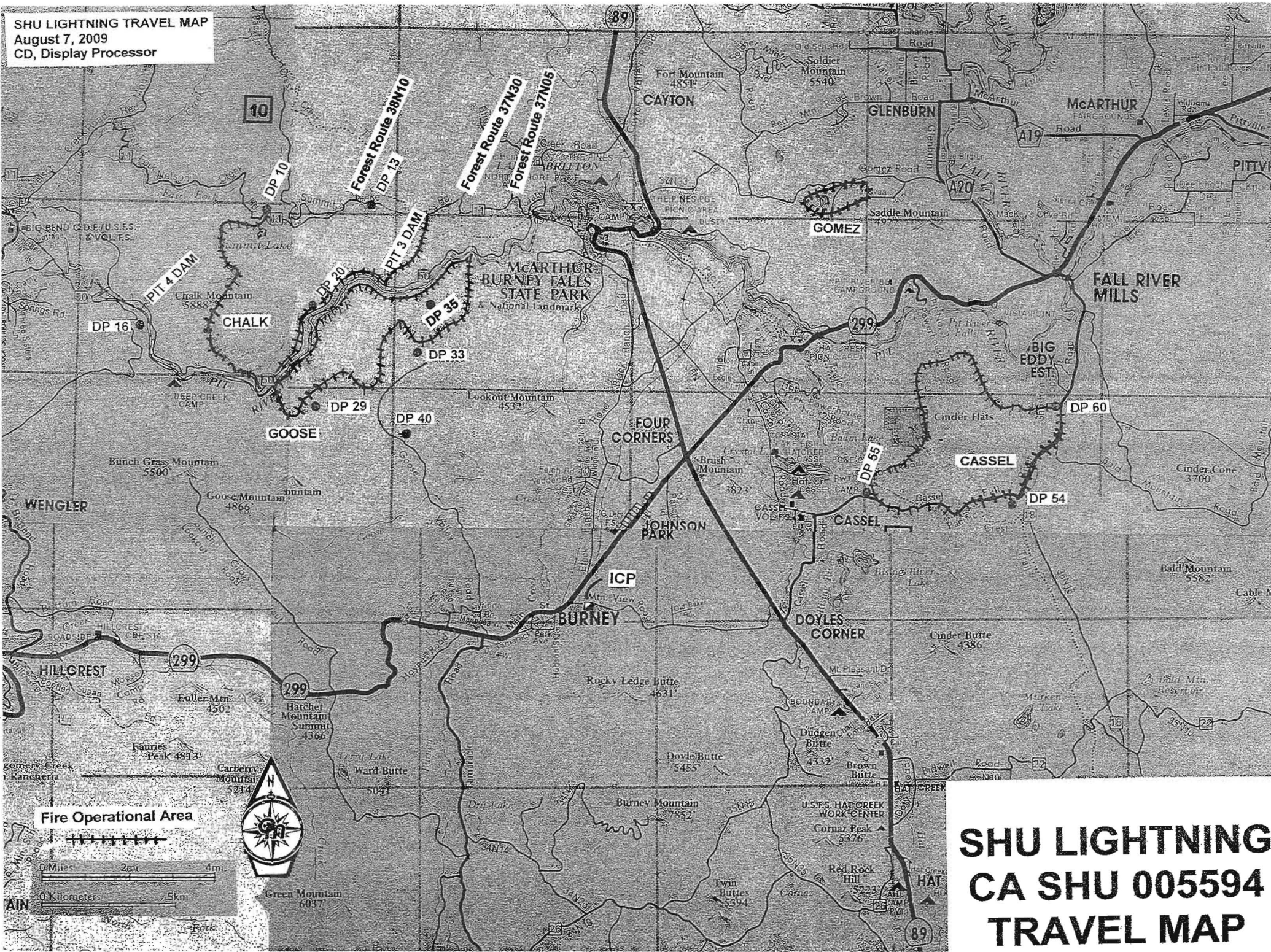
SHU LIGHTNING
CA-SHU-00594

Equipment Fueling

Map not to scale



SHU LIGHTNING TRAVEL MAP
August 7, 2009
CD, Display Processor



**SHU LIGHTNING
CA SHU 005594
TRAVEL MAP**

TRAINEES

SEE THE TRAINING SPECIALIST

(LOCATED IN PLANS - NEXT TO CHECK IN)

START THE PROCESS OR UPDATE THE PROGRESS.

STOP BY PERIODICALLY SO I CAN TRACK YOUR TASK
BOOK

MARK MCKEY TRAINING SPECIALIST ICT 1

We Are Recycling!

- Paper
- Cans
- Plastic Bottles
- Cardboard
- Batteries

Please separate all trash from recyclables and place in black garbage bags.
Pick up bags at lunch trailer.

Drop off points located next to dumpsters at:

- Supply
- Sleeping Areas

Battery Recycling next to supply tent and Communication trailer.

Archaeological Guidelines for the Shasta Lightning Complex Shasta County, CA

1. Sites known by the archaeologist will be marked with red plastic flagging tape.
2. Be on the lookout for unmarked prehistoric archaeological sites. These sites may include village sites that include dark midden soils and circular housepit depressions; seasonal camps marked by the presence of shiny black obsidian flakes and/or white-colored freshwater mussel shells; and hunting camps containing obsidian and basalt flakes.
3. Be on the lookout for unmarked historic archaeological sites. These sites may include old cabins and homesteads now marked by the presence of foundations, wells, and can dumps. Also present is early infrastructure related to the PG&E hydro-electric system.
4. Look for these unmarked prehistoric and historic sites in flat areas, especially adjacent to the Pit River, streams, and springs.
5. Avoid ground disturbing activities within archaeological sites where possible. If you can't avoid, minimize ground disturbance as much as possible, only clearing the surface to as minimal a depth as necessary. Try to go around sites with dozers rather than through them. Flag the site for continued avoidance during Fire Suppression Repair activities.
6. If you find artifacts leave them in place. Some artifacts may have been intentionally placed for religious or ceremonial reasons.
7. If possible, note locations of discovered artifacts, features, and/or sites on a map. Better yet take a GPS reading. Leave information for the archaeologist with the Plans Unit.
8. **While protection of non-renewable cultural resources is important, firefighter safety is even more important. Protect archaeological sites where you can but do not jeopardize firefighter safety or risk losing control of the incident when site protection is considered.**

Thanks for your help protecting California's cultural heritage.

Richard Jenkins
CAL FIRE Northern Region Archaeologist
Redding

Fire Suppression Repair Checklist

CA-SHU-005594

In an effort to identify problem areas, the attached form is provided for use by fireline personnel.

Use the attached form(s) to document locations where repair work may be necessary. Use IAP maps to show locations. Return forms to the Suppression Repair Unit at the end of your shift.

Fire Name _____ Form Preparer _____

Division _____ Date Prepared _____

Work Needed

Location

(T./R./S.)

Fence/Gate Repair _____

Waterbars _____

Road Repair _____

Watercourse Cleanout _____

Culvert Cleanout and Repair _____

Seeding/Mulching Watercourse Crossing _____

Trash Pickup _____

Other _____

NOTE: List type of material/equipment/personnel needed (e.g., fencing materials, tools, dozer, backhoe, stakeside, handcrew, etc.)

Fire Suppression Repair

Roads

- Install waterbreaks where a waterbreak previously existed.
- Install new waterbreaks where needed
- Install or maintain a rolling dips where a rolling dip previously existed.
- Re-establish existing berms where applicable.
- Breach berms to facilitate drainage, where applicable.
- Clean culverts plugged with soil and rock resulting from fire road use.
- Remove all slash and debris from culvert inlets/outlets.
- Clean and grade ditch lines and lead off ditches.
- Water roads for dust abatement.

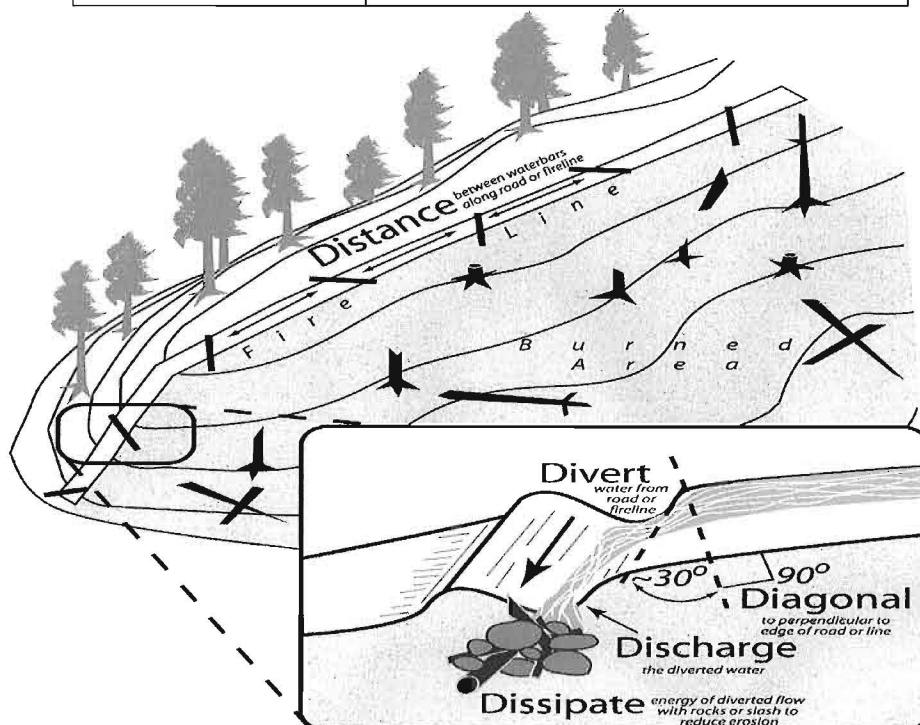
Hand Lines and Dozer Lines

- Install waterbars as described in the guidelines below. Waterbars are designed to intercept, slow and spread the precipitation run-off in order to reduce sediment transport and soil erosion. The idea is to move water off the fireline before it can build up enough energy to erode and transport sediment.

Waterbar Guidelines:

These spacing distances should be used as a *guide*. Judgment should be used in locating waterbars to minimize erosion potential. It may not be possible or necessary to place waterbars in steep or rocky areas. Install waterbars at the following recommended **minimum** intervals:

Fireline Gradient (% slope)	Minimum Distance Between Water-Bars (feet)
0 to 10	200
11 to 25	100
25+	50



DEMOBILIZATION PLAN - summarized
SHU Lightning INCIDENT

I. RELEASE PRIORITIES

The following Release Priorities have been established by the Incident Commander in concert with the Redding ECC.

1. Local Government (other operational areas)
2. Out of state resources
3. Cooperating Agencies
4. Federal Resources
5. Contract and private resource
6. CAL FIRE resources (prioritized by distance and travel time)

III. GENERAL GUIDELINES

- A. **NO RESOURCES WILL LEAVE UNTIL AUTHORIZED BY THE DEMOB UNIT.**
- B. Efforts will be made to ensure that all released personnel arrive home by 2200.
- C. Prior to leaving the Incident the Demob Unit will brief all Supervisors and Strike Team Leaders.
- D. Notification to incident personnel will be by posting surplus releases in advance.
- E. Actual departure times and ETA at destination will be relayed to Expanded Dispatch at time of departure.
- F. All Trainees will see the Training Tech Specialist prior to departure.
- G. Maximum driving duration for federal resources will not exceed 10 hours/person/day.

IV. RESPONSIBILITIES

Unit Leaders will declare resources excess to their Section Chief. Section Chiefs will declare *excess* resources to the Demob Unit. Include the date and time the resources will be surplus, their position on the incident and any transportation needs. ****Use the General Message Form (ICS-213) or Team release form to list all surplus resources. Send to the RESOURCE UNIT.**

V. RELEASE PROCEDURES

- A. **Functional Heads** (i.e. Section Chiefs and Unit leaders) are responsible for determining resources "Excess" to their needs and submitting the list to the Planning Section. This must be done 24 hours in advance of anticipated release in order to Notify North Ops of planned demobilization and to allow a proactive approach to reassignments or releases to the home units. The lists will provide the following information about the resource:
 1. Order/Request number
 2. Resource name or designator
 3. ETD
 4. Travel time (including rest and meals if necessary)
 5. Destination
 6. Availability for reassignment (if not available, provide valid reason)
 7. If flying, nearest Jetport and Social Security Number
- B. **RESL** will determine if there is a need at the incident that the Excess resource can fill. If no incident reassignments are necessary, the resource will be declared "Surplus" to the incident.
- C. **DMOB** will combine the approved surplus resource lists to create "Pending" resource lists to be submitted to the forest or agency dispatch for confirmation. DMOB will work with the resources and supply units so that the resource status board and resource orders can be kept up to date.
- D. When a resource status has been **confirmed** by dispatch and NOPS. DMOB will notify the resource so that check-out may begin.
- E. The Crew Leader or individual will take the Demobilization Check-out form to:
 - COML (to confirm that radio equipment is returned)
 - SUPL (to confirm all non-expendable property is returned)
 - GSUL (to inspect, clean and repair vehicles)
 - TIML (to confirm all time reporting documents are complete)
 - DOCL (to hand in logs or ratings)
- F. DMOB will be the last stop in the press release process and:
 - Sign-off, note date and time on the ICS-221
 - Note any revisions to the ETD or ETA
 - Collect the ICS-221
- G. Resource is **released** and free to leave the incident.

SHASTA COMPLEX PHONE PLAN

		FAX	OFFICE
I.C.			335-3428
SAFETY			707-889-4215
LIASON			335-3373
INFO		335-3372	335-3372
CDC A. REP			335-3415
OPERATIONS			335-3408
			335-3377
PLANS			335-4084
LOGISTICS			335-3405
FINANCE		335-3382	335-3424motel
			335-3423ppts
COMMUNICATIONS			335-3402
			335-5203
ORDERING		335-3388	335-3413
			335-3411
FIRE INFO SHU OFFICE			225-2510
RESOURCE UNIT			335-4084
INCINET/CHECK-IN/DEMOB/TRAINING		335-4106	
NORTH TREE OFFICE		335-4152	
NORTH TREE GIS			335-4132
CHECK-IN			335-3386
			335-3433
STAGING----JERROD KOOS			831-251-6374
BURNEY LCA			335-2203
REPAIR			335-5542
Danny Sykes			448-2430
SCSO non emergency dispatch			245-6540
SCSO Anthony Bertain			921-3117
RADIO TECH			335-4142
COM UNIT LEADER			335-4104
HELIBASE DESK			530-336-6280
HELIBASE FINANCE			530-336-6123
OTHER IMPORTANT PHONE NUMBERS			
DAN TINNEL	OES REP		530-941-0095
WILL DARNALL	FSC		530-200-2504
HARPER KEENE	PUL		530-276-4687
TOM CRESPIAN	TUL		530-200-6097
STEVE WEIR	GSUL		707-391-6732
SEAN	COST		530-200-2514
PATTI ROYER	PPTS		916-838-0843
KIM RONGEY	PURC		916-316-7352
JAN NEWTON	PURC		916-804-2113
KATHLEEN HIE	PURC		707-287-6718
PAUL ABE	ETR		916-799-8528
SKIP SANNERS	COMP		530-966-0350
CHRIS RAMEY	PTRC		707-599-6439
LARAMIE GRIFFITH	CCC A. REP		530-227-1024
ARIK BORD	ELITE SECURITY		530-598-6498
ROGER CUMMINGS	ELITE SECURITY		530-605-5904
ELITE SECURITY	DISP		888-948-4774
			530-242-8957

updated 1530 08/08/09

DIVISION / GROUP SUPERVISOR OPERATIONAL PERIOD - DEBRIEFING FORM

Incident Name: _____ Operational Period: _____

Branch: _____ Division/Group: _____ Div/Grp Supervisor Name: _____
 Cell #: _____ Vehicle Radio #: _____

Weather:
 Time: _____ Temp: _____ Humidity: _____ Fire Behav.: _____
 Wind: _____ Fuels: _____ Topog: _____ Natural Barriers: _____

Today

General Remarks / Accomplishments / Problem Areas:

Spot Fires: _____

Safety Concerns: _____

Water Sources: _____

Drop Points: _____

Division Breaks: _____

Helispots: _____

Values at Risk: _____

ACCOUNTABILITY				AGENCY Resources Committed to Division / Group			
Overhead	ENG	ENG S/T	CRW	CRW S/T	DOZ	DOZ S/T	Other

ACCOUNTABILITY			PRIVATE Resources Committed to Division / Group			
Kind	Req. #	Owner / ID	Operator	2nd Oper?	Type/Size	Remarks

Reminder: Complete Vendor Shift Tickets and Vendor Evaluations

Planning for Next Operational Period

Next Operational Period: _____ thru _____ Division / Group: _____

Division / Group RESOURCES NEEDED for Next Operational Period

Engines (Type/#)		Crews (Type/#)		Dozers	Water Tenders	Tankers	Copters	Other Equipment	Overhead
<i>S/T</i>	<i>SR</i>	<i>S/T</i>	<i>SR</i>	<i>Type/#</i>	<i>Type/#</i>	<i>Type/#</i>	<i>Type/#</i>	<i>Kind/#</i>	<i>Kind/#</i>

Division / Group Assignments – Special Needs Next Operational Period

Tomorrow

Work Assignments:

Special Needs:

MAP of Current and Expected Conditions

Please Turn in this Form to Planning Section - We have Color Maps

