

SKASRA LIGHTNING

CR SXU 005594

AUGUST 10, 2009 0700-0700

YOUR SAFE ACTIONS MAKE A SAFER DAY

Fatigue

is intensified by heat. Monitor yourself.

Snags

Heads up for DANGER TREES.

Isolate with flagging and advise Division Sup.

Hydration

**For hot days and hard work,
plan early for re-supply**

Personal Hygiene

Hand washing helps control germs

Backhaul your trash

Foraging bears are a hazard

**S
A
F
E
T
Y**

**S
A
F
E
T
Y**

**S
A
F
E
T
Y**

**I
T
'
S

U
P

T
O

Y
O
U
!**

INCIDENT OBJECTIVES	1. Incident Name SHU Lightning Complex	2. Date 08/09/09	3. Time 1700
4. Operational Period August 10, 2009 0700 - 0700			
<p>5. General Control Objectives for the Incident (include alternatives)</p> <p style="text-align: center;">INCIDENT MANAGEMENT OBJECTIVES</p> <ul style="list-style-type: none"> • Provide for firefighter and public safety. • Provide for initial attack within Eastern Shasta County. • Keep costs commensurate with values at risk. • Provide accurate and timely information to the public, media, and cooperating agencies. • Communicate with cooperators regarding impacts from the fires to the surrounding communities and the assets at risk. • Minimize fire suppression impacts to cultural resources, protected species, and riparian areas <p style="text-align: center;">INCIDENT CONTROL OBJECTIVES</p> <ul style="list-style-type: none"> • Incident Control Objectives are listed on the ICS 204s for each Branch 			
6. Weather Forecast for Period SEE ATTACHED WEATHER FORECAST			
7. General Safety Message SEE ATTACHED SAFETY MESSAGE			
8. Attachments (mark if attached)			
<input checked="" type="checkbox"/> Organization List - ICS 203	<input checked="" type="checkbox"/> Medical Plan - ICS 206	<input checked="" type="checkbox"/> (Other) WEATHER FORECAST	
<input checked="" type="checkbox"/> Div. Assignment Lists - ICS 204	<input checked="" type="checkbox"/> Incident Map	<input type="checkbox"/>	
<input checked="" type="checkbox"/> Communications Plan - ICS 205	<input checked="" type="checkbox"/> Traffic Plan	<input type="checkbox"/>	
9. Prepared by (Planning Section Chief) Phyllis Banducci	10. Approved by (Incident Commander) Doug Wenham		

ORGANIZATION ASSIGNMENT LIST			9. Operations Section		
1. Incident Name		SHU Lightning Complex		Chief	B.Gouvea/E.Ullman - S. Watson (T)
2. Date		8/9/2009		3. Time	2300
4. Operational Period		8/10/2009		0700-0700	
5. Incident Commander and Staff			G. Goose Branch		
Incident Commander		D. Wenham		Branch Director	M. Hebrard
Deputy		J. Sisneros		Division D	D. McNamara
Safety Officer		L. Green - J. Mathias(T)		Division E	A. Lambert - D. Rogers (T)
Information Officer		S. Lauderdale		Division F	R. Gonzales
Liaison Officer		J. Terpstra - S. Jones (T)		Division N	M. Fields
6. Agency Representative			b. Chalk Branch		
Agency		Name		Branch Director	D.Quigley
Shasta Co Sheriff		D. Dean		Division T	G. Quigley
Hat CreekLNF Rd		M. Price		Division V	R. Hemstalk
CDCR		Lt M. Ahlin		Division W	T. Main
CAL EMA		D. Tinnel		Division X	K. Twohey - P. Purvis (T)
BLM		J. Martinez		c. Cassel Division A/C/Y	
				Division A/C/Y	M. Bradley
				d. Burney LCA Branch	
				Branch Director	J. Mobley
				Big Bend/1-16/Gomez Group	B. Thomas
				1-34 Group	D. Gaddy
7. Planning Section			e. Fire Supression Repair Group		
Chief		S. Griffis		Goup	A. Wyman
Deputy					
Resource Unit		G. Schultz - D. Hall (T)		f. Branch	
Situation Unit		E. Hucks - D.Gordon (T) - S.Johnson (T)		Branch Director	
Documentation Unit		G. Schultz		Division/Group	
Demoblization Unit		R. Wedel - D. Pucci (T)		g. Branch	
Human Resources				Branch Director	
Technical Specialists		(name / specialty)		Division/Group	
M. McKey / Training		K.DeSena/GISS		h. Air Operations Branch	
J. Turner - E. Kurtz/FBAN		S. Estes/Motels		Air Operations Branch Director	D.Reese - A. Lujan(T)
J.Tonkin/IMET		H. Love/Crew Tech Spec		Air Support Supervisor	N. Truax - M.Wright (T)
R.Carr-J. Roberson/Hired Equipment				Air Attack Supervisor	M. Kendall / S. Brockman-B. Reed (T)
L. Pollack - S. Velasquez/Arch				Helicopter Coordinator	R.Yniguez - J.Serrano (T)
				Helicopter Coordinator	
8. Logistics Section			10. Finance Section		
Chief		D. Pedersen - K. Lowe (T)		Chief	W.Darnall
Deputy				Deputy	
Service Branch Dir.				Time Unit	T. Crespin
Support Branch Dir.				Procurement Unit	H. Keene
Supply Unit		M. Jarske - J. Walls (T)		Comp/Claims Unit	
Facilities Unit		E. Solis		Cost Unit	S.Kavanaugh
Ground Support Unit		S. Weir - C. Simmons			
Communications Unit		T. Webb			
Medical Unit		J. Vanatta			
Security Unit					
Food Unit		S. Ortiz			
				Prepared by (Resource Unit Leader)	
				R. Gladwin	



CAL FIRE INCIDENT COMMAND TEAM 1



UNIT/ACTIVITY LOG ICS 215A Rev. 06-09	1. INCIDENT NAME: SHASTA LIGHTNING COMPLEX	2. DATE PREPARED: August 9, 2009	3. TIME PREPARED: 1830 HR
4. PREPARED BY: HERB LOVE SOF1 (T)	5. LEADER NAME: LINDA GREEN, ISO TEAM 1	6. OPERATIONAL PERIOD: 8/10/2009 TO 8/11/2009	

INCIDENT RISK ANALYSIS - WILDLAND FIRES

DIVISION	HAZARDOUS ACTIONS / CONDITIONS	MITIGATIONS / WARNINGS / REMEDIES
GOOSE CHALK	SNAG HAZARDS (Includes Utility Poles) DOWNHILL FIRE LINE HOLDING AND MOP UP OPERATIONS FATIGUE HYDRATION	Follow Hazard Tree Safety Guidelines (IRPG p. 80). Steep/rocky terrain: watch footing/maintain spacing. Flare-ups generally occur in: grass & light brush. Be alert for signs of fatigue, take breaks. Drinking water before, during and after shifts.
CASSEL	SNAG HAZARDS (Includes Utility Poles) FATIGUE HYDRATION SUPPRESSION REPAIR ACTIVITY HOLDING AND MOP UP OPERATIONS	Follow Hazard Tree Safety Guidelines (IRPG p. 80). Be alert for signs of fatigue, take breaks. Drinking water before, during and after shifts. Conduct thorough briefing for all personnel. Flare-ups generally occur in: grass & light brush.
BURNEY LCA	FIRE BEHAVIOR LINE CONSTRUCTION HYDRATION WEATHER DRIVING HAZARDS	Base all actions on current/expected fire behavior. Ensure LCES in place. Drinking water before, during and after shifts. Access to weather & fire behavior forecasts? Be alert for other drivers, civilians, & wildlife.

FIRE BEHAVIOR FORECAST

FORECAST NUMBER 07	TYPE OF FIRE SURFACE
FIRE NAME SHU LIGHTNING COMPLEX	OPERATIONAL PERIOD August 10, 2009
DATE ISSUED August 09, 2009	TIME ISSUED 2100
UNIT Shasta Ranger Unit	SIGNED <i>Jim Turner</i> <i>ETK</i> Jim Turner/Eric Kurtz

WEATHER SUMMARY

SKY/WEATHER...CLEAR...EXCEPT FOR SMOKE.
MAX TEMPERATURE...92* IN THE VALLEY TO 85* ON THE SLOPES AND RIDGE TOPS
MIN HUMIDITY 13% IN THE VALLEY TO 17% ON THE RIDGES WITH POOR RECOVERY IN THE PM TO EARLY AM HOURS
GEOGRAPHICAL TREND...WARMING AND DRYING, WINDS BECOMING WESTERLY IN THE AFTERNOON.
LAL...0
CHANCE OF DRY LIGHTNING...0%
CHANCE OF WETTING RAIN...0%

NOTE

MAIN PIT RIVER DRAINAGE WILL INFLUENCE LOCAL SLOPE EDIE WINDS IN THE LOWER AREAS OF DIVISIONS TANGO AND NOVEMBER

FIRE BEHAVIOR INPUTS

FINE DEAD FUEL MOISTURE = 5 TO 8% DEPENDING ON FUEL SHADING
1000 HR FUEL MOISTURE = 8% (KILN DRY LUMBER = 12%)
PROBABILITY OF IGNITION= 60%
SPOTTING DISTANCE = 0.6 MILES FROM SINGLE TREE TORCHING MIDSLOPE.

NOTE POST LOOKOUTS TO RECORD AND ADVISE OPERATIONS OF CRITICAL FIRE WEATHER CHANGES.

SPECIFIC

CREWS MAY EXPERIENCE SIGNIFICANT FIRE RUNS IN THE MID AFTERNOON STARTING AROUND 1300 HRS. ACTIVE FIRE MOVEMENT IS BY SLOPE AND WIND ALIGNMENT, WITH FIREBRANDS CASTING DOWNWIND AND ROLLOUTS ON STEEP SLOPES. THIS TYPE OF RUN MAY EXCEED 12 TO 15 CHAINS PER HOUR IN THE BRUSH/TIMBER OVERSTORY AND 8 FOOT FLAME LENGTHS: MAXIMUM SPOTTING DISTANCES OF 0.5 MILES. RUNS IN TIMBER LITTER MAY RESULT IN RATE OF SPREAD (ROS) OF 6 CHAINS PER HOUR 2 TO 3 FOOT FLAME LENGTHS. DEAD & DOWNED FUELS ARE VERY RECEPTIVE FUEL BEDS FOR EMBERS. LIVE FUEL MOISTURES IN BRUSH ARE 84% (80% IS CRITICAL IN MANZANITA). BACKING FIRES BURNING ON THE LEEWARD SIDE OF THE SLOPE ARE BEING FUELED BY GROUND LITTER AND HAVE A SLOWER RATE OF SPREAD. STEEP TERRAIN AND ROLL-OUT PRESENT A HAZARD TO THE LINE. FINE DEAD FUEL MOISTURES WILL BE AT THE LOWEST FROM 1400-1800 HRS. RANGING BETWEEN 5-8%. AREAS OF DIRTY BURN EXIST THROUGHOUT ALL FIRES AND HAVE THE POTENTIAL FOR REBURN IF WINDS BEGIN TO SHIFT OR A NEW START OCCURS.

AIR OPERATIONS

- VISIBILITY MAYBE IMPARED DUE TO THE LACK OF TRANSPORT WINDS IN THE AFTERNOON HOURS.

SAFETY

- CREWS NEED TO CONTINUE PAYING CLOSE ATTENTION FOR HIDDEN SPOT FIRES IN ALL FUEL BED TYPES
- WEAKENED SNAGS MAY FALL ACROSS CONTAINMENT LINES.
- STEEP TERRAIN AND UNDERSLUNG LINE MAY CAUSE ROLL-OUTS ACROSS CONTAINMENT LINES.
- DOWNED HEAVY FUELS MAY CONTAIN HIDDEN POCKETS OF BURNING MATERIAL.



SHU Complex Incident Weather Forecast

FORECAST NO: 7
PREDICTION FOR: Monday Day Shift

NAME OF FIRE: SHU Complex
UNIT: CA-SHU 5594

SHIFT DATE: Aug 10th, 2009
FORECAST ISSUED: 1900 August 9th, 2009

Incident Meteorologist: Jeff Tonkin

WEATHER DISCUSSION: A ridge of high pressure over northern California will maintain a warming and drying trend through today...accompanied by a stable airmass. Light winds will account for widespread smoke and hazy sky conditions. Surface winds will continue to be mainly terrain driven or out of the northwest...while ridge top and smoke transport winds remain light and out of the northwest.

WEATHER FORECAST MONDAY DAY SHIFT:

WEATHER: Clear. Smoke will be west of the fire early. Smoke will then drift back east over the fire and Burney beginning around noon. Fire area will be very smokey between 1300 and 1700 local.

LIGHTNING ACTIVITY LEVEL: 1 **CHANCE OF WETTING RAIN:** 0%

TEMPERATURES: 86 - 92 valleys/drainages...80 - 85 upper slopes/ridges.

MIN HUMIDITY: 13 - 18% valleys/drainages. 17 - 22% upper slopes/ridges.

WINDS (20 FOOT):

RIDGETOP - West 3 - 6 mph...gusts to 10 to 14 mph in the afternoon.
Winds diminishing around sunset.

LOWER ELEVATION/DRAINAGE - West or Upslope/Upcanyon 2 - 5 mph...After 1300 West
5 to 8 mph Gusts to 15 mph.

STABILITY / INVERSION: Stable with very little mixing.

WEATHER FORECAST TONIGHT:

WEATHER: Smoke moving east...becoming clear late.

MIN TEMPERATURES: 43 to 50 at 3500 ft. 35 - 40 above 5000 ft.

MAX HUMIDITY: 46 - 51% around 3500 ft. 60-70% above 5000 ft.

WINDS (20 FOOT):

RIDGETOP - Northwest 3 to 6 mph until 2300...then becoming East or Northeast 2 to 4 mph
through 1000 Local.

VALLEY - West 3 to 6 mph until 2300...then east or down-slope 2- 4 mph through 1000 local.

OUTLOOK FOR TUESDAY: Clear but smokey and slightly cooler. Temps: 84 - 89. Min RH: 16-21%. Wind: West and Northwest 3 to 6 mph...gusts 10 to 12 mph in the afternoon.

EXTENDED FORECAST FOR WEDNESDAY THROUGH FRIDAY: Slightly cooler and increasingly unstable. West winds will increase in the afternoon...similar to last week's gusty west winds. West wind...8 to 14 mph gusts to 25 mph in the afternoon. Max temps 81-86 valleys...74-80 ridges. Min RH 25% valley...25-30% ridge.

DIVISION ASSIGNMENT LIST			1. Branch Goose		2. Division/Group N		
3. Incident Name SHU Lightning Complex			4. Operational Period Date: 8/10/09 – 8/11/09 Time: 0700-0700				
5. Operations Personnel							
Operations Chief		Gouvea / Ullman (N)		Division/Group Supervisor		Fields	
Branch Director		Hebrard		Air Attack Supervisor No.			
6. Resources Assigned this Period							
Strike Team/Task Force/ Resource Designator	Leader		Number Persons	Trans. Needed	Drop Off PT./Time		Pick Up PT./Time
FELB	Markley		1		DP 33		0800
FALC	Hodgson		1		DP 33		0800
FALC	Anderson		1		DP 33		0800
FOBS	Cash		1		DP 33		0800
FOBS	Frates		1		DP 33		0800
ST SBC 9322 C	Joyner		19		DP 33		0800
ST TUU 9411 C	Machado		21		DP 33		0800
ST XNE 4101C	Good		19		DP 33		0800
ST LNU 9143 G	Layton		34		DP 33		0800
ST TGU 9259 G	Boston		35		DP 33		0800
*WT SHS 71	Carrol		2		DP 33		0800
WT TNT E-117	Mueller		2		DP 33		0800
WT Brdwl E-310	Bridwell		2		DP 33		0800
WT Bear Cntry E-311	Rollins		2		DP 33		0800
WT Rchlitz E-313	Rochlitz		2		DP 33		0800
WT Oilar E-314	Oilar		2		DP 33		0800
7. Control Operations Mop up 100 feet in and patrol . Keep fire North of Goose Mtn., East of Big Bend Rd., South of Pit River, West of Pit 3 Dam.							
8. Special Instructions Bottles and cans to be placed in bags separate from trash. Place at designated location by Supply or by dumpsters in Camp. Back haul all trash and place in dumpsters in Camp. *WT SHS 71 is on a 12 hour shift.							
9. Division/Group Communication Summary							
Function	Frequency	System	Channel	Function	Frequency	System	Channel
Command	Rx 151.175W Tx 159.450W	King NIFC	CDF CMD 9 Tone 9	Logistics	154.4525N	King NIFC	V Tac-12
Tactical Div/Group	154.4525N	King NIFC	V Tac-12	Air to Ground	151.220	King NIFC	CDF A/G
Prepared by (Resource Unit Ldr.) Gabriel Schultz		Approved by (Planning Sect. Ch.) <i>Phy/Mr Banducci</i>			Date 8/9/09		Time 2000

DIVISION ASSIGNMENT LIST		1. Branch Chalk		2. Division/Group T (Page 1)			
3. Incident Name SHU Lightning Complex		4. Operational Period Date: 8/10/09-8/11/09 Time: 0700-0700					
5. Operations Personnel							
Operations Chief	Gouvea / Ullman (N)		Division/Group Supervisor		G. Quigley		
Branch Director	D. Quigley		Air Attack Supervisor No.				
6. Resources Assigned this Period							
Strike Team/Task Force/ Resource Designator	Leader	Number Persons	Trans. Needed	Drop Off PT./Time	Pick Up PT./Time		
SOFL	Mcmillen	1		Big Bend Fire Station	0800		
SOFL	Brownell	1		Big Bend Fire Station	0800		
FELB	Kramer	1		Big Bend Fire Station	0800		
DOZB	Mattson	1		Big Bend Fire Station	0800		
FALC	Bell - Starr	2		Big Bend Fire Station	0800		
FALC	Blackburn	1		Big Bend Fire Station	0800		
FALC	Loerzel	1		Big Bend Fire Station	0800		
FOBS	McDaniel - Opie (T)	2		Big Bend Fire Station	0800		
FOBS	Henault - McBride (T)	2		Big Bend Fire Station	0800		
ST HUU 9122G	Scarlett	33		Big Bend Fire Station	0800		
ST HUU 9126G	Rudesill	33		Big Bend Fire Station	0800		
ST TGU 9255G	Wallen	33		Big Bend Fire Station	0800		
ST FKU 9475G	Hutchison	34		Big Bend Fire Station	0800		
ST MEU 9114G	Sandhahl	33		Big Bend Fire Station	0800		
ST SLU 9395G	Elmore	33		Big Bend Fire Station	0800		
*CRW Diamond Mt. HS	Varney	19		Big Bend Fire Station	0800		
**ST LNU 9147L	Head	6		Big Bend Fire Station	0800		
DOZ NEU 2344	Devery	2		Big Bend Fire Station	0800		
7. Control Operations Finish and improve line along Blackberry Ridge. Fire out line from Chalk Mountain to Pit River. *Diamond Mt. HS will be Firing Group. **ST LNU 9147L is on a 12 hour shift. Keep fire North of River Road, South of 37N30 Rd., East of Swift Creek, and West of Pit 3 Dam.							
8. Special Instructions Beware of spotting and post lookouts. Bottles and cans to be placed in bags separate from trash, place at designated locations by Supply or by dumpsters in Camp. Backhaul all trash & place in dumpsters in Camp.							
9. Division/Group Communication Summary							
Function	Frequency	System	Channel	Function	Frequency	System	Channel
Command	Rx 151.175W Tx 159.450W	King NIFC	CDF CMD 9 Tone 9	Logistics	159.4725	King NIFC	V Tac-14
Tactical Div/Group	154.265 W	King NIFC	White Fire -2	Air to Ground	151.220	King NIFC	CDF A/G
Prepared by (Resource Unit Ldr.) Gabriel Schultz		Approved by (Planning Sect. Ch.) <i>Phyllis Banducci</i>			Date 8/9/09		Time 2300

DIVISION ASSIGNMENT LIST		1. Branch Chalk		2. Division/Group X			
3. Incident Name SHU Lightning Complex		4. Operational Period Date: 8/10/09-8/11/09 Time: 0700-0700					
5. Operations Personnel							
Operations Chief	Gouvea / Ullman (N)		Division/Group Supervisor		Twohey- Purvis (T)		
Branch Director	Quigley		Air Attack Supervisor No.				
6. Resources Assigned this Period							
Strike Team/Task Force/ Resource Designator	Leader	Number Persons	Trans. Needed	Drop Off PT./Time	Pick Up PT./Time		
FALC	Southard	1		Big Bend Fire Station	0800		
FALC	Porter	1		Big Bend Fire Station	0800		
FALC	Vaughn	1		Big Bend Fire Station	0800		
ST XSJ 4175C	Siefert	17		Big Bend Fire Station	0800		
ST XYO 4276C	Jaramillo	20		Big Bend Fire Station	0800		
ST TUU 9473G	Delashmutt	33		Big Bend Fire Station	0800		
WT Carlton E-39	Rynes	1		Big Bend Fire Station	0800		
WT Zabel E-52	Zabel	2		Big Bend Fire Station	0800		
7. Control Operations Mop-up 200 feet in. Keep fire North of River Road, South of 37N30 Rd., East of Swift Creek, and West of Pit 3 Dam.							
8. Special Instructions Bottles and cans to be placed in bags separate from trash placed at designated locations by Supply or dumpsters in Camp. Backhaul all trash and place in dumpsters at Camp.							
9. Division/Group Communication Summary							
Function	Frequency	System	Channel	Function	Frequency	System	Channel
Command	Rx 151.175W Tx 159.450W	King NIFC	CDF CMD 9 Tone 9	Logistics	159.4725	King NIFC	V Tac-14
Tactical Div/Group	154.295 W	King NIFC	White Fire-3	Air to Ground	151.220	King NIFC	CDF A/G
Prepared by (Resource Unit Ldr.) Gabriel Schultz		Approved by (Planning Sect. Ch.) <i>Phyllis Banducci</i>			Date 8/9/09		Time 2300

DIVISION ASSIGNMENT LIST				1. Branch Chalk		2. Division/Group V		
3. Incident Name SHU Lightning Complex				4. Operational Period Date: 8/10/09-8/11/09 Time: 0700-0700				
5. Operations Personnel								
Operations Chief		Gouvea / Ullman (N)		Division/Group Supervisor		Hemstak		
Branch Director		Quigley		Air Attack Supervisor No.				
6. Resources Assigned this Period								
Strike Team/Task Force/ Resource Designator		Leader		Number Persons	Trans. Needed	Drop Off PT./Time	Pick Up PT./Time	
SOFL		Bair		1		Big Bend Fire Station	0800	
SOFL		Demattei		1		Big Bend Fire Station	0800	
FELB		McGregor		1		Big Bend Fire Station	0800	
FALC		Madsen		1		Big Bend Fire Station	0800	
FALC		Smyth		1		Big Bend Fire Station	0800	
FALC		Russell		1		Big Bend Fire Station	0800	
FALC		Bolton		1		Big Bend Fire Station	0800	
ST KRN 9320C		Brady		17		Big Bend Fire Station	0800	
CRW Sugar Pine 5				16		Big Bend Fire Station	0800	
GRDR Stan Leach E-205		Leach		2		Big Bend Fire Station	0800	
7. Control Operations Mop-up 300 feet in. Keep fire North of River Road, South of 37N30 Rd., East of Swift Creek, and West of Pit 3 Dam.								
8. Special Instructions Beware of spotting and post lookouts. Bottles and cans to be placed in bags separate from trash, place at designated locations by Supply or by dumpsters in Camp.								
9. Division/Group Communication Summary								
Function	Frequency	System	Channel	Function	Frequency	System	Channel	
Command	Rx 151.175W Tx 159.450W	King NIFC	CDF CMD 9 Tone 9	Logistics	159.4725	King NIFC	V Tac-14	
Tactical Div/Group	173.9875	King NIFC	USFS R-5 T-6	Air to Ground	151.220	King NIFC	CDF A/G	
Prepared by (Resource Unit Ldr.) Gabriel Schultz			Approved by (Planning Sect. Ch.) <i>Phyllis Banducci</i>			Date 8/9/09		Time 2300

DIVISION ASSIGNMENT LIST				1. Branch Chalk		2. Division/Group W	
3. Incident Name SHU Lightning Complex				4. Operational Period Date: 8/10/09-8/11/09 Time: 0700-0700			
5. Operations Personnel							
Operations Chief		Gouvea / Ullman (N)		Division/Group Supervisor		Main	
Branch Director		Quigley		Air Attack Supervisor No.			
6. Resources Assigned this Period							
Strike Team/Task Force/ Resource Designator	Leader	Number Persons	Trans. Needed	Drop Off PT./Time	Pick Up PT./Time		
SOFL	Piccinini	1		Big Bend Fire Station	0800		
FALC	Stahl-Seaborn	2		Big Bend Fire Station	0800		
FALC	Edwards	1		Big Bend Fire Station	0800		
FOBS	Johnson - Hill (T)	2		Big Bend Fire Station	0800		
ST TGU 9250C	Johnson	16		Big Bend Fire Station	0800		
ST XSA 4154C	Worthington	22		Big Bend Fire Station	0800		
ST BDU 9389G	Volmer	37		Big Bend Fire Station	0800		
DOZ Oilar E-33	Beebe	2		Big Bend Fire Station	0800		
WT Northstate E-116	Bowman	2		Big Bend Fire Station	0800		
WT All Agency E-268	Hill	2		Big Bend Fire Station	0800		
WT 570 Big Bend E-301	Green	2		Big Bend Fire Station	0800		
7. Control Operations							
Mop-up 200 feet in.							
Keep fire North of River Road, South of 37N30 Rd., East of Swift Creek, and West of Pit 3 Dam.							
8. Special Instructions							
Bottles and cans to be placed in bags separate from trash placed at designated locations by Supply or dumpsters in Camp. Backhaul all trash and place in dumpsters at Camp.							
9. Division/Group Communication Summary							
Function	Frequency	System	Channel	Function	Frequency	System	Channel
Command	Rx 151.175W Tx 159.450W	King NIFC	CDF CMD 9 Tone 9	Logistics	159.4725	King NIFC	V Tac-14
Tactical Div/Group	158.7375	King NIFC	V Tac-13	Air to Ground	151.220	King NIFC	CDF A/G
Prepared by (Resource Unit Ldr.) Gabriel Schultz		Approved by (Planning Sect. Ch.) <i>Phyllis Banducci</i>			Date 8/9/09		Time 2300

DIVISION ASSIGNMENT LIST				1. Branch Burney LCA		2. Division/Group Big Bend Group/1-18/Gomez		
3. Incident Name SHU Lightning Complex				4. Operational Period 12 hour operational period Date: 8/10/09 Time: 0700-1900				
5. Operations Personnel								
Operations Chief		Gouvea / Ullman (N)		Division/Group Supervisor		Thomas		
Branch Director		Mobley		Air Attack Supervisor No.				
6. Resources Assigned this Period								
Strike Team/Task Force/ Resource Designator		Leader		Number Persons	Trans. Needed	Drop Off PT./Time	Pick Up PT./Time	
THSP		Hollister		1		Station 19	0800	
ENG SHS 570		Hazeltine		3		Station 19	0800	
ENG SHU 2451		Keown		4		Station 19	0800	
ENG SHU 2461		Misner		4		Station 19	0800	
ENG SHU 2463		Thomson		3		Station 19	0800	
ENG SHU 2467		Wilkerson		4		Station 19	0800	
W/T All States E-40		MacCordy		2		Station 19	0800	
W/T MHS 4630 E-228		Haistings-Wood		2		Station 19	0800	
7. Control Operations Mop-up and patrol known fires Identify and suppress new fires								
8. Special Instructions Bottles and cans to be placed in bags separate from trash, place at designated locations by Supply or by dumpsters in Camp. Backhaul all trash & place in dumpsters in Camp. Beware of spotting and post lookouts.								
9. Division/Group Communication Summary								
Function	Frequency	System	Channel	Function	Frequency	System	Channel	
Command	Rx 151.175W Tx 159.450W	King NIFC	CDF CMD 9 Tone 9	Logistics	159.4725	King NIFC	V Tac-14	
Tactical Div/Group	166.775 N	King NIFC	NIFC Tac-6	Air to Ground	151.220	King NIFC	CDF A/G	
Prepared by (Resource Unit Ldr.) Gabriel Schultz			Approved by (Planning Sect. Ch.) <i>Phyllis Benducci</i>			Date 8/9/09		Time 2300

DIVISION ASSIGNMENT LIST		1. Branch Burney LCA		2. Division/Group Group 1-34			
3. Incident Name SHU Lightning Complex		4. Operational Period 12 hour operational period Date: 8/10/09 Time: 0700-1900					
5. Operations Personnel							
Operations Chief	Gouvea / Ullman (N)		Division/Group Supervisor		Gaddy		
Branch Director	Mobley		Air Attack Supervisor No.				
6. Resources Assigned this Period							
Strike Team/Task Force/ Resource Designator	Leader	Number Persons	Trans. Needed	Drop Off PT./Time	Pick Up PT./Time		
ENG SHU 2466	Ciapponi	4		Burney Station 14	0800		
ENG SHU 2469	Simmons	3		Burney Station 14	0800		
ENG SHU 2486	Troncale	4		Burney Station 14	0800		
DOZ SHU 2442	Johnson	2		Burney Station 14	0800		
W/T Cattaneo E-56	Chovesta	1		Burney Station 14	0800		
7. Control Operations Mop-up and patrol known fires Identify and suppress new fires							
8. Special Instructions Bottles and cans to be placed in bags separate from trash, place at designated locations by Supply or by dumpsters in Camp. Backhaul all trash & place in dumpsters in Camp.							
9. Division/Group Communication Summary							
Function	Frequency	System	Channel	Function	Frequency	System	Channel
Command	Rx 151.175W Tx 159.450W	King NIFC	CDF CMD 9 Tone 9	Logistics	159.4725	King NIFC	V Tac-14
Tactical Div/Group	166.775 N	King NIFC	NIFC Tac-6	Air to Ground	151.220	King NIFC	CDF A/G
Prepared by (Resource Unit Ldr.) Gabriel Schultz		Approved by (Planning Sect. Ch.) <i>Phyllis Banducci</i>			Date 8/9/09		Time 2300

DIVISION ASSIGNMENT LIST			1. Branch		2. Division/Group Fire Suppression Repair Group (Page 1)		
3. Incident Name SHU Lightning Complex			4. Operational Period 12 hour operational period Date: 8/10/09 Time: 0700-1900				
5. Operations Personnel							
Operations Chief		Gouvea / Ullman (N)		Division/Group Supervisor		Wyman	
Branch Director				Air Attack Supervisor No.			
6. Resources Assigned this Period							
Strike Team/Task Force/ Resource Designator	Leader		Number Persons	Trans. Needed	Group Assignments		Pick Up PT./Time
Suppression Repair	Kendrick		1		Cassel Branch		0800
BLM Resource Advisor	Kosic		1		Cassel Branch		0800
FOBS	Hill		1		Cassel Branch		
FOBS (T)	Harvey		1		Cassel Branch		0800
DOZ Carlton E-22	Carlton		2		Cassel Branch		0800
DOZ Hagen E-59	Hagen		2		Cassel Branch		0800
DOZ Hagen E-60	Poe		2		Cassel Branch		0800
DOZ Caldwell E-285	Caldwell/Spoon		2		Cassel Branch		0800
WT Zabel E-240	Zabel		2		Cassel Branch		0800
FOBS	Green		1		Gomez Branch		0800
FOBS (T)	Northup		1		Gomez Branch		0800
ST LNU 9144 L	Vierra		5		Gomez Branch		0800
WT Cattaneo E-53	Newman		2		Gomez Branch		0800
7. Control Operations Assess fire suppression repair needs. Water bar fire lines. Water roads as needed.							
8. Special Instructions Contact each Branch and Division upon arrival and departure. Bottles and cans to be placed in bags separate from trash. Place at designated location by Supply or by dumpsters in Camp. Back haul all trash and place in dumpsters in Camp.							
9. Division/Group Communication Summary							
Function	Frequency	System	Channel	Function	Frequency	System	Channel
Command	Rx 151.175W Tx 159.450W	King NIFC	CDF CMD 9 Tone 9	Logistics	159.4725	King NIFC	V Tac-14
Tactical Div/Group	168.050 N	King NIFC	NFCI Tac-1	Air to Ground	151.220	King NIFC	CDF A/G
Prepared by (Resource Unit Ldr.) Gabriel Schultz		Approved by (Planning Sect. Ch.) <i>Phyllis Banducci</i>			Date 8/9/09		Time 2000

DIVISION ASSIGNMENT LIST			1. Branch		2. Division/Group Fire Suppression Repair Group (Page 2)		
3. Incident Name SHU Lightning Complex			4. Operational Period: 12 hour operational period Date: 8/10/09 Time: 0700-1900				
5. Operations Personnel							
Operations Chief		Gouvea/Ullman (N)		Division/Group Supervisor		Wyman	
Branch Director				Air Attack Supervisor No.			
6. Resources Assigned this Period							
Strike Team/Task Force/ Resource Designator	Leader		Number Persons	Trans. Needed	Drop Off PT./Time		Pick Up PT./Time
DOZB	Bloom		1		Goose Branch		0800
DOZ Packway E-23	Taylor		2		Goose Branch		0800
DOZ Silverstar E-125	Shankin		2		Goose Branch		0800
*WT B&G E-118	Brock/Jarrett		2		Goose Branch		0800
*WT Hoaglan E-241	Hoaglan		2		Goose Branch		0800
*WT Stotts E-269	Stottsberry		2		Goose Branch		0800
GDR Gregory E-318	Gregory		1		Goose Branch		0800
GDR Hathaway E-319	Hathaway		1		Goose Branch		0800
DOZB	Barnes		1		Burney HS		0700
DOZB	Trammell		1		Burney HS		0700
7. Control Operations Assess fire suppression repair needs. Water bar fire lines. Water roads as needed. Contact each Branch and Division upon arrival and departure. *WTs on Goose Branch are on a 24 hour shift.							
8. Special Instructions Bottles and cans to be placed in bags separate from trash. Place at designated location by Supply or by dumpsters in Camp. Back haul all trash and place in dumpsters in Camp.							
9. Division/Group Communication Summary							
Function	Frequency	System	Channel	Function	Frequency	System	Channel
Command	Rx 151.175 W Tx 159.450 W	King NIFC	CDF CMD 9 Tone 9	Logistics	159.4725	King NIFC	V Tac-14
Tactical Div/Group	168.050 N	King NIFC	NFCI Tac-1	Air to Ground	151.220	King NIFC	CDF A/G
Prepared by (Resource Unit Ldr.) Gabe Schultz		Approved by (Planning Sect. Ch) <i>Phyllis Banducci</i>			Date 8/9/09		Time 2000

Immediate Need Firing Operation Checklist

Location: _____

Date: _____

Time: _____

Firing Supervisor _____

1. Personnel Briefing

- Objectives
- Conditions (weather, fuel, burn window)
- Resource assignments
 - firing personnel
 - holding forces
 - lookouts
- Ignition plan/sequence
- Communication Plan
- Contingency Plan
- Safety issues

2. GO / NO-GO

- | | |
|--|--|
| <input type="checkbox"/> All personnel briefed | <input type="checkbox"/> Communications systems in place |
| <input type="checkbox"/> Weather forecast reviewed | <input type="checkbox"/> Fire behavior forecast reviewed |
| <input type="checkbox"/> Resources in place | <input type="checkbox"/> Escape routes and safety zones established and made known |
| <input type="checkbox"/> Lookouts posted as needed | <input type="checkbox"/> Adjoining forces/Air Attack notified |
| <input type="checkbox"/> Anchor and termination firing points identified | |

3. APPROVAL PRIOR TO FIRING

4. NOTIFICATION PRIOR TO FIRING

AIR OPERATIONS SUMMARY

OPERATIONAL PERIOD DATE: DAY SHIFT DATE: 08/10/09

START: 0830 END: 1940

(Expanded Form for Large Operations)

1. INCIDENT NAME: Shasta Lightning Complex	2. PREPARED BY: A.Lujan	PREPARED DATE/TIME: 08/09/09 1900
---	-------------------------	-----------------------------------

4. REMARKS (Safety Notes, Hazards, Air Operations Special Equipment,, etc.):

SUNRISE: 0620

SUNSET : 2016

5. TFR:

All GPS data to be collected (degrees, minutes & decimal minutes)

**Avoid aerial application of retardant or foam within 300' of waterways, bodies of water. If retardant is dropped within these areas, notify

AOBD with Lat & Long, est. of gallons, and a map.

1. Notam 9/3026

TRACK RETARDANT DROP LOCATIONS

6. PERSONNEL	Phone	7. REQUENCIES	AM	FM	8. FIXED-WING # Avail / Type/ Make-Model / FAA N# / Base(s)
AOBD: Alex Lujan (T) AOBD: Dan Reese	530-598-2645 707-391-6784	AIR/AIR FW:	128.250	170.4625	Air Tactical AA-240 AA-500
ATGS: Scott Brockman ATGS: Crystal Henson	530-226-2695	AIR/AIR RW:	S 127.025 N 128.675		
HLCO: R Yniguez, B Reid (T) HLCO: Scott Upton, J Serrano (T)	530-448-2450 707-889-4373	AIR/GROUND:		151.220	Lead planes
ASGS: N Truax (T) / M Wright (T)	530-448-2411	DECK:	163.100		Airtankers 3 Type 1 5 Type 3
HEBM. Randy Fergosa Scott Corn(T)	530-200-3263 530-227-4887	COMMAND RPT	Command 9 Tone 9		Other :
HLCO: E Gomberg (T)	530-448-2408	Air Guard	168.625		
		TOLC	122.80		

9. HELICOPTERS (Use Additional Sheets As Necessary)

FAA N#	TY	MAKE/MODE	BASE	AVAIL	START	REMARKS	FAA N#	TY	MAKE/MODE	BASE	AVAIL	START	REMARKS
1HM	3	206 L4	FR	0830		HELCO	FY	1	BV 107	FR	0830	FY	
8GH	3	206 B3	FR	0830		HELCO	784	1	S 61	FR	0830	784	
726	3	206 B3	FR	0830		Relief Helco	96W	1	S 61	FR	0830	96W	
3SH	3	206 B3	FR	0830		Recon / Mapping							
205	2	UH1H	FR	0830									
207	2	UH1H	FR	0830		Standard							
8HM	2	UH1B	FR	0830									
217	2	214	FR	0830									
6TV	2	UH1H	FR	0830									
1GH	2	UH1H	FR	0830									
C 101	2	205	FR	0830		Medivac/ Short Haul							

**FIELD EVALUATION –Ground Personnel
CAL FIRE USE OF WATER ENHANCERS**

INCIDENT AND OBSERVER INFORMATION

Incident No. _____ Responsible agency (i.e., CA-SLU or NV-HTF) _____ Observation Date _____
 Incident Name _____ Your Home Unit ID(i.e., CA-TCU) _____ - Your Phone (____) _____
 Your Name _____ Your eMail _____@_____._____
 Your ICS Position (if known) _____

2. General Time of Use (24hr) _____ **Gel Product Being Used:** _____

1. Engine Number: _____

FUEL AND FIRE BEHAVIOR INFORMATION

3. Fire Behavior Fuel Model (circle one):	Grass	Grass/Brush	Scattered timber	Heavy timber	Brush
4. Slope (circle one):		0-10%	11-30%	31-60%	61-90%
5. Estimated canopy height (circle one):		≤ 2 ft	2.5 – 8 ft	8.5-20 ft	> 20 ft
6. Estimated down/dead/woody fuel depth (circle one):		≤ 1 ft	1.5 – 3 ft	> 3 ft	
7. Estimated flame length (circle one):		≤ 4 ft	4-8 ft	8.5-12 ft	> 12 ft
8. Fire behavior conditions (circle one):		Low	Moderate	High	Extreme
8a. Drop conditions (cross-wind, turbulence, visibility, etc):		Extremely Adverse	Adverse	Moderately Favorable	Favorable Very Favorable

STRATEGY AND APPLICATION

9. Type of attack (circle one): Direct Indirect If Indirect, how far from fire (ft) _____
 10. Location (circle one): Anchor Flank Head Mop Up
 11. Was Gel effective? (circle one): YES NO
 12. Was normal flow rate adjusted (circle one): Same Yes – Used more water No—Used less water
 13. Did gel last longer than water alone? (circle one): average time Same Greater 1 hour Less 1 hour
 14. Estimated effectiveness (circle one): Same good better great
 15. Did Gel effect engine performance? (describe): _____
 16. Average Pump Pressure: _____ psi.

ASSESSMENT

17. Was product colored (circle one):	YES	NO	Not Visible	Visible with Difficulty	Visible	Strikingly Visible
17a. Was product visibility adequate for mission?						
18. Product effectiveness on flames:	No Effect	Slight Effect	Moderate Effect	Strong Effect	Completely Extinguished	

OVERALL RATING (circle spot on graph) 0 – 1 – 2 – 3 – 4 – 5 – 6 – 7 – 8 – 9 – 10

(0 being ineffective, 5 about the same as water, to 10 being completely effective)

For Evaluation Team Only

REMARKS: (use back of form if necessary)

Current differences with Mars Project forms

**FIELD EVALUATION – ATGS / Pilots/Ground Personnel
CAL FIRE USE OF WATER ENHANCERS
INCIDENT AND OBSERVER INFORMATION**

Incident No. _____ Responsible agency (i.e.; CA-SLU or NV-HTF) _____ Observation Date _____
 Incident Name _____ Your Home Unit ID(i.e.; CA-TCU) _____ - Your Phone (____) _____ -
 Your Name _____ Your eMail _____ @ _____ . _____
 Your ICS Position (if known) _____

1. Aircraft ID Number: **T-**____ **C-**____ 2. General Time of Drops (24hr) _____ **Gel Product Being Dropped:** _____

FUEL AND FIRE BEHAVIOR INFORMATION

3. Fire Behavior Fuel Model (circle one):	Grass	Grass/Brush	Scattered timber	Heavy timber	Brush
4. Slope (circle one):		0-10%	11-30%	31-60%	61-90%
5. Estimated canopy height (circle one):		≤ 2 ft	2.5 – 8 ft	8.5-20 ft	> 20 ft
6. Estimated down/dead/woody fuel depth (circle one):		≤ 1 ft	1.5 – 3 ft	> 3 ft	
7. Estimated flame length (circle one):		≤ 4 ft	4-8 ft	8.5-12 ft	> 12 ft
8. Fire behavior conditions (circle one):		Low	Moderate	High	Extreme
8a. Drop conditions (cross-wind, turbulence, visibility, etc):		Extremely Adverse	Adverse	Moderately Favorable	Favorable Very Favorable

STRATEGY AND AERIAL APPLICATION

9. Type of attack (circle one):	Direct	Indirect	If Indirect, how far from fire (ft) _____		
10. Location of attack (circle one):	Anchor	Flank	Head	Structure protection	
11. Was normal drop height adjusted (circle one):	No	Yes – dropped higher		Yes - dropped lower	
12. Was normal flow rate adjusted (circle one):	No	Yes – dropped higher		Yes – dropped lower	
13. Did drop require release change from water?		Same	Release earlier	Release later	
14. Estimated drop height (circle one):	< 75 ft	75-125 ft	126 – 175 ft.	> 175 ft	
15. Coverage level applied (GPC) (circle one):	0 – 1 – 2 – 3 – 4 – 5 – 6 – 7 – 8 – 9 – 10				
16. Drop speed: _____ kts.					

DROP ASSESSMENT

17. Was product colored (circle one):	YES	NO	Not Visible	Visible with Difficulty	Visible	Strikingly Visible
17a. Was product visibility adequate for mission?						
18. Product effectiveness on flames:	No Effect	Slight Effect	Moderate Effect	Strong Effect	Completely Extinguished	

OVERALL RATING (circle spot on graph) **0 – 1 – 2 – 3 – 4 – 5 – 6 – 7 – 8 – 9 – 10** For Evaluation Team Only

(0 being ineffective, 5 about the same as long-term water, to 10 being completely effective)

19. On this drop, would you have preferred instead of gel (circle one): Water Long-Term Retardant Don't know

INCIDENT RADIO COMMUNICATIONS PLAN			Shasta Lightning Incident			Date/Time Prepared 8/9/2009 - 20:00:00 AM			Operational Period Date/Time 8/10/2009/0700-0700		
Ch #	Function	Channel Name/Trunked Radio System Talkgroup	Assignment	RX Freq N or W	RX Tone/NAC	TX Freq N or W	Tx Tone/NAC	Mode A, D or M	Remarks		
1	Command	CDF Command-1	Not assigned	151.355 W		159.300 W	156.7 (6)	A	Not assigned		
2	Command	CDF Command-9	Command	151.175 W		159.450 W	100.0 (9)	A	Grp 3 Ch.9		
3	Command	NIFC Cmnd-22		165.450 N		172.5125 N	156.7 (6)	A	Not assigned		
4	Tactical	V-Tac 11	Back Bone Branch	151.1375 N		151.1375 N	156.7	A	Grp 3 Ch.146		
5	Tactical	V-Tac 13	Chalk Div.W	158.7375 N		158.7375 N	156.7	A	Grp 3 Ch.148		
6	Tactical	NIFC Tac-5	Goose Branch	166.725 N		166.725 N		A	Grp 3 Ch.103		
7	Tactical	NIFC Tac-6	Burney LCA	166.775 N		166.775 N		A	Grp 3 Ch.104		
8	Tactical	NIFC Tac-7	Gomez Branch	168.250 N		168.250 N		A	Grp 3 Ch.105		
9	Tactical	USFS R-5 T-4	Cassel Branch	173.9125 N		173.9125 N		A	Grp 3 Ch.106		
10	Tactical	USFS R-5 T-5	Cassel Branch	173.9625 N		173.9625 N		A	Grp 3 Ch.107		
11	Tactical	USFS R-5 T-6	Chalk Div. V	173.9875 N		173.9875 N		A	Grp 3 Ch.108		
12	Tactical	White Fire-2	Chalk Div. T	154.265 W		154.265 W		A	Grp 3 Ch.151		
13	Tactical	White Fire-3	Chalk Div. X	154.295 W		154.295 W		A	Grp 3 Ch.152		
14	Tactical	NIFC Tac-1	Fire Sup Repair	168.050 N		168.050 N		A	Grp 3 Ch.99		
15	Tactical	NIFC Tac-3	Demob	168.600 N		168.600 N		A	Grp 3 Ch.101		
16	Tactical	V-Tac-12	Goose Div. N	154.4525 N		154.4525 N	156.7	A	Grp 3 Ch.147		
17	Tactical	CDF-A/G	Air to Ground	151.2200 N		151.2200 N		A	Air to Ground Grp3Ch126		
18	Camp/Logistics	V-Tac-14	Logistics	159.4725 N		159.4725 N		A	Base Camp UseGrp3Ch4149		
19	Medical	CALCORD	Medical	156.075 W		156.075 W		A	Medical Emerg. Grp3Ch.144		
20	Emergency	Air Guard	Emergency	168.625 N		168.625 N	110.9	A	Emerg. Air ContactGrp3Ch138		
Prepared By (Communications Unit) Tom Webb COML CALFIRE Team 1					Incident Location County State Latitude N Longitude W						

26

The convention calls for frequency lists to show four digits after the decimal place, followed by either an "N" or a "W", depending on whether the frequency is narrow or wide band. Mode refers to either "A" or "D" indicating analog or digital (e.g. Project 25) or "M" indicating mixed mode. All channels are shown as if programmed in a control station, mobile or portable radio. Repeater and base stations must be programmed with the Rx and Tx reversed.

MEDICAL PLAN	1. INCIDENT NAME SHU Lightning	2. DATE PREPARED 8/9/2009	3. TIME PREPARED 1530	4. OPERATIONAL PERIOD 8/10/09-8/11/09 0700-0700
---------------------	-----------------------------------	------------------------------	--------------------------	---

5. INCIDENT MEDICAL AID STATION

MEDICAL AID STATIONS	LOCATION	PARAMEDICS	
		YES	NO
Incident Base MERT	27571 Mountain View Rd., Burney, CA (Burney High School)	<input checked="" type="checkbox"/>	<input type="checkbox"/>
CAL FIRE Personnel	On engines and at CAL FIRE stations.	<input type="checkbox"/>	<input checked="" type="checkbox"/>
DMAT	Incident Base	<input checked="" type="checkbox"/>	<input type="checkbox"/>
		<input type="checkbox"/>	<input type="checkbox"/>
		<input type="checkbox"/>	<input type="checkbox"/>

6. TRANSPORTATION

A. AMBULANCE SERVICES

NAME	ADDRESS	PHONE	PARAMEDICS	
			YES	NO
Redding ECC	Contact Redding ECC for all air or ground transport	530-225-2411	<input checked="" type="checkbox"/>	<input type="checkbox"/>
Burney Ambulance	Burney, CA (contact SHU ECC)	530-225-2411	<input checked="" type="checkbox"/>	<input type="checkbox"/>
Mayers Memorial Hospital	43563 HWY 299. Mc Arthur, CA	530-336-5511	<input checked="" type="checkbox"/>	<input type="checkbox"/>
			<input type="checkbox"/>	<input type="checkbox"/>
			<input type="checkbox"/>	<input type="checkbox"/>

B. INCIDENT AMBULANCES

NAME	LOCATION	PARAMEDICS	
		YES	NO
	N/A	<input type="checkbox"/>	<input type="checkbox"/>
		<input type="checkbox"/>	<input type="checkbox"/>
		<input type="checkbox"/>	<input type="checkbox"/>
		<input type="checkbox"/>	<input type="checkbox"/>

7. HOSPITALS

NAME	ADDRESS	TRAVEL TIME		PHONE	HELIPAD		BURN CENTER	
		AIR	GRND		YES	NO	YES	NO
Mercy Medical Center	2175 Rosaline Ave Redding CA 96001	15-30min	1-2 hours	530-225-6000	X	<input type="checkbox"/>	<input type="checkbox"/>	X
Shasta Regional Hospital	1100 Butte St., Redding, CA	15-30min	1-2 hours	530-244-5353	X	<input type="checkbox"/>	<input type="checkbox"/>	X
UC Davis	2315 Stockton Blvd., Sacramento, CA	1.5 hours	2.5-3 hours	(916) 734-2130	X	<input type="checkbox"/>	X	
Mayers Memorial	43563 HWY 299. Mc Arthur, CA	15-30min	.5 - 1.5 hours	530-336-5511	X	<input type="checkbox"/>	<input type="checkbox"/>	X
		<input type="checkbox"/>	<input type="checkbox"/>		<input type="checkbox"/>	<input type="checkbox"/>	<input type="checkbox"/>	<input type="checkbox"/>

8. MEDICAL EMERGENCY PROCEDURES

Immediately report all injuries to your immediate supervisor.
Any injury requiring greater care than first aid needs to be reported to your Division/Group Supervisor on Command net
Supervisors be prepared to request needs including:
- Air or Ground Transportation
- Location to meet injured person / any special routing / GPS coordinates if available
- Type of injury
Division/Groups will coordinate transportation or additional needs
Notify Safety Officer for all significant injuries
More significant events (ie major injuries or deaths, burn over, missing persons) require immediate IC & PIO notification
All Air Ambulance LZ coordination will be conducted on CalCord
Any Short Haul procedure will be with Copter 101 coordinated through your Division/Group Supervisor

9. PREPARED BY (MEDICAL UNIT LEADER) Med Unit Leader Jeff Vanatta	10. REVIEWED BY (SAFETY OFFICER) Herb Love
--	---

Contractor/Vendor Performance Evaluation

ICS 230

Incident Name	Order Number	Request Number	Start Date	End Date	
			To		
Shift/Operational Period		Operator	Assignment or Location		

Vendor Name	Vendor Address	Phone and Contact
-------------	----------------	-------------------

Service Commodity Rental Equipment Agreement # _____

Brief description of services/commodity/equipment ordered:

Rating Factors	YES	NO
1) Gave and Met acceptable ETA/commitment.	<input type="checkbox"/>	<input type="checkbox"/>
2) Arrived prepared, equipped and ready to work.	<input type="checkbox"/>	<input type="checkbox"/>
3) Met with assigned supervisor for direction.	<input type="checkbox"/>	<input type="checkbox"/>
4) Met performance expectations.	<input type="checkbox"/>	<input type="checkbox"/>
5) Equipment in safe working condition.	<input type="checkbox"/>	<input type="checkbox"/>
6) Personnel were skilled and operated safely.	<input type="checkbox"/>	<input type="checkbox"/>
7) Personnel's level of cooperation was acceptable.	<input type="checkbox"/>	<input type="checkbox"/>
8) Other:	<input type="checkbox"/>	<input type="checkbox"/>
Overall rating of performance	Poor* <input type="checkbox"/> Avg <input type="checkbox"/> Good <input type="checkbox"/> Exc. <input type="checkbox"/>	
Recommendation for Rehire/Reuse:	YES <input type="checkbox"/>	NO <input type="checkbox"/> **

* Any rating of poor requires explanation or comment.
 ** Recommendation of No Reuse requires comment and Logistics Chief concurrence.

Comments: _____

Signature below does not constitute agreement with rating, but that rating was discussed with me.

Vendor Representative Name/Title		Government Rep. Name/Position	
Signature	Date	Signature	Date

Note: Equipment safety/compliance inspections still required, please document separately.
 Distribution: Blue; Original-Incident Packet Canary; Copy-Contractor/Vendor Pink; Copy-Admin Unit

FUEL REPAIR

299 E

To SHU

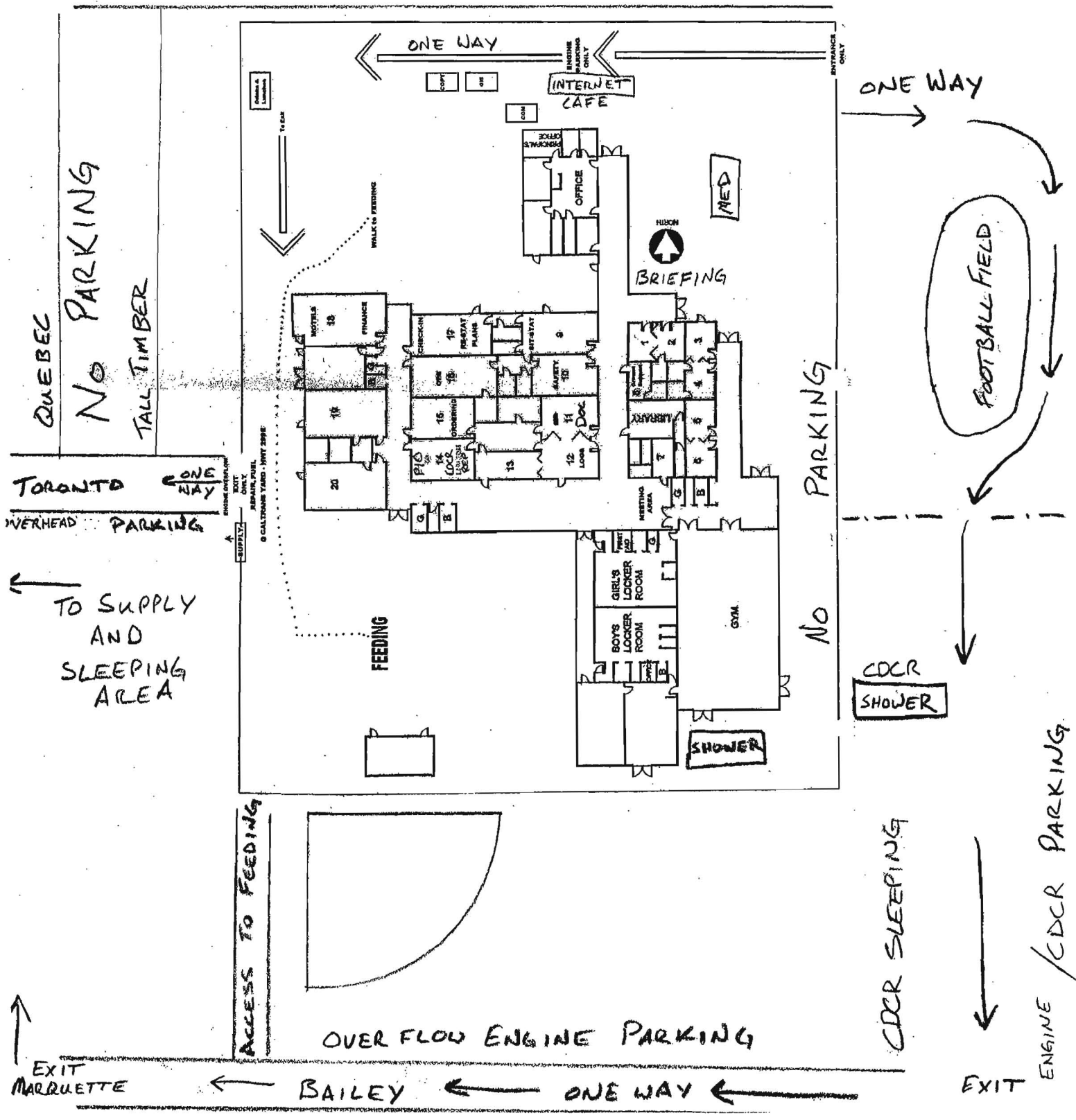
SHU LIGHTNING
CA-SHU-005594

FACILITIES MAP

Map not to scale

PARKING

MT. VEIW



NO PARKING

TALL TIMBER

TORONTO OVERHEAD PARKING

TO SUPPLY AND SLEEPING AREA

FEEDING

ACCESS TO FEEDING

OVER FLOW ENGINE PARKING

BAILEY

ONE WAY

EXIT MARQUETTE

NO PARKING

CDCR SHOWER

CDCR SLEEPING

EXIT

ENGINE / CDCR PARKING

FOOTBALL FIELD

ONE WAY

ONE WAY

INTERNET CAFE

BRIEFING



MED

OFFICE

COPY

PRINT

SECURITY

FINANCE

RECEPTION

17

16

15

14

13

12

11

10

9

8

7

6

5

BOYS LOCKER ROOM

GIRLS LOCKER ROOM

MEETING AREA

GYM

SHOWER

SHOWER

SHOWER

SHOWER

SHOWER

SHOWER

SHOWER

SHOWER

SHOWER

SHOWER

SHOWER

SHOWER

SHOWER

SHOWER

SHOWER

SHOWER

SHOWER

REPAIR, FUEL

EXIT ONLY

WALK TO FEEDING

ENTRANCE ONLY

ENTRANCE ONLY

ENTRANCE ONLY

ENTRANCE ONLY

ENTRANCE ONLY

ENTRANCE ONLY

ENTRANCE ONLY

ENTRANCE ONLY

ENTRANCE ONLY

ENTRANCE ONLY

ENTRANCE ONLY

ENTRANCE ONLY

ENTRANCE ONLY

ENTRANCE ONLY

ENTRANCE ONLY

ENTRANCE ONLY

ENTRANCE ONLY

ENTRANCE ONLY

ENTRANCE ONLY

ENTRANCE ONLY

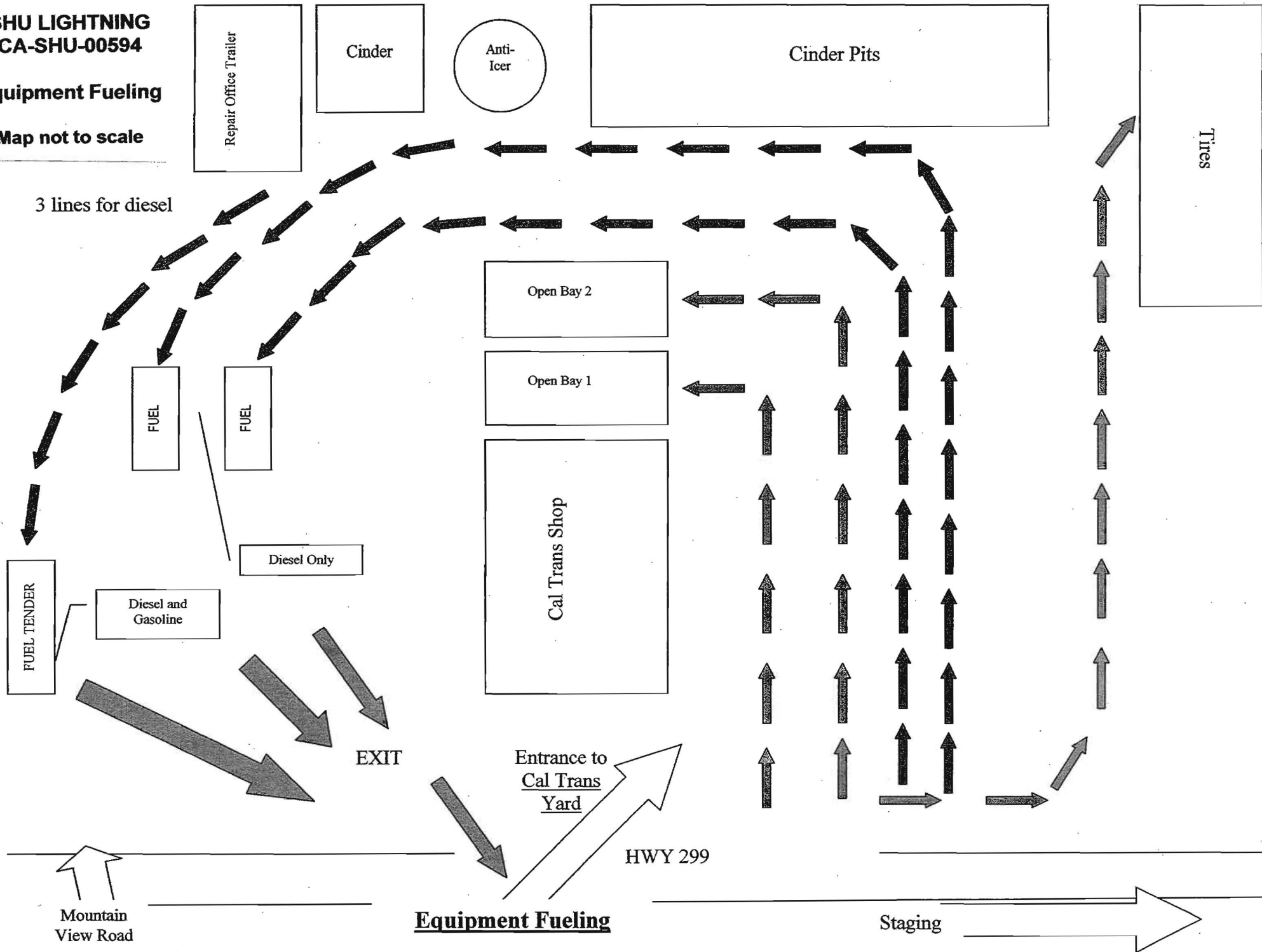
ENTRANCE ONLY

ENTRANCE ONLY

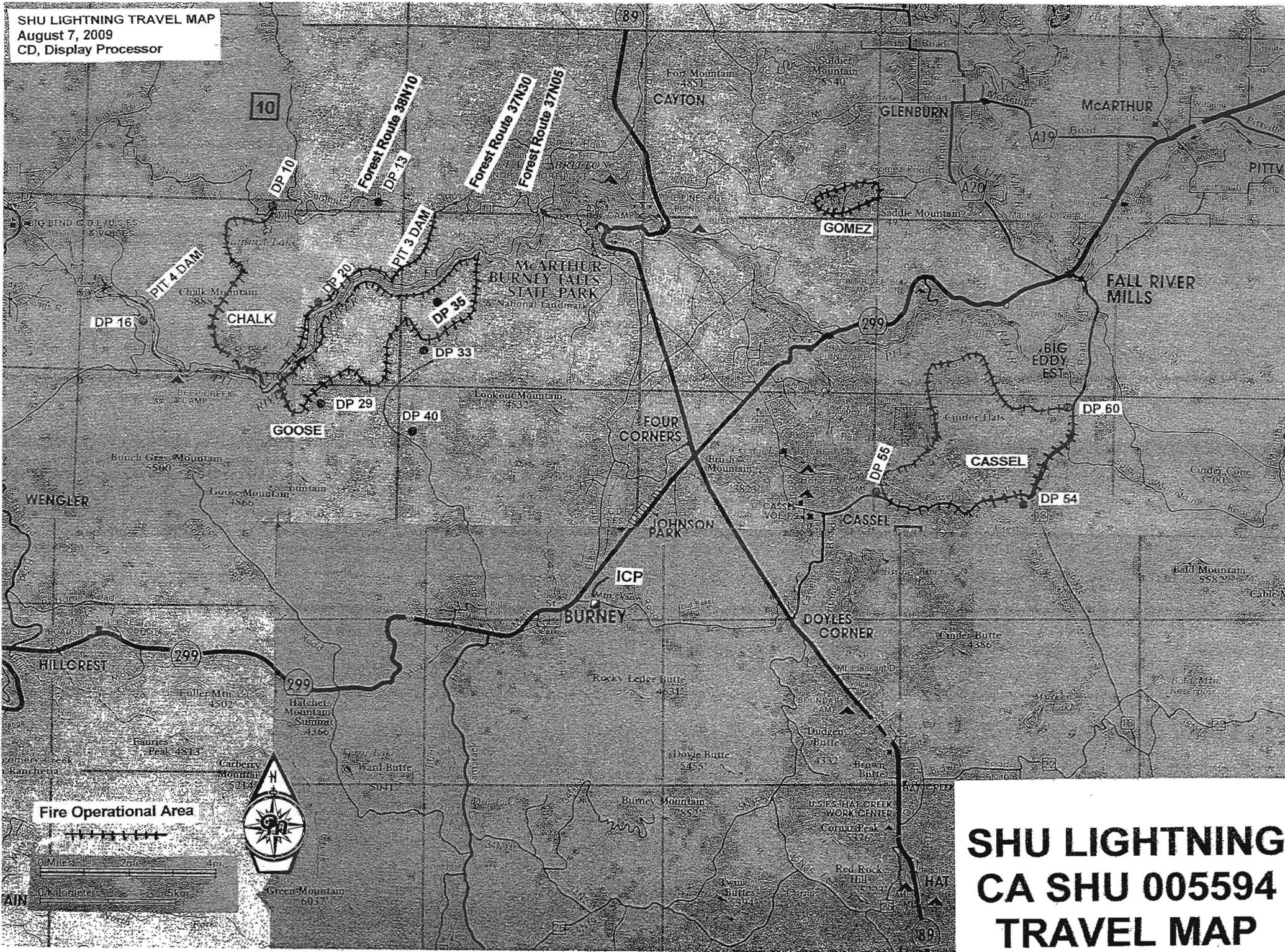
**SHU LIGHTNING
CA-SHU-00594**

Equipment Fueling

Map not to scale



SHU LIGHTNING TRAVEL MAP
August 7, 2009
CD, Display Processor



Fire Operational Area



**SHU LIGHTNING
CA SHU 005594
TRAVEL MAP**

TRAINEES

SEE THE TRAINING SPECIALIST

(LOCATED IN PLANS - NEXT TO CHECK IN)

START THE PROCESS OR UPDATE THE PROGRESS.

STOP BY PERIODICALLY SO I CAN TRACK YOUR TASK
BOOK

MARK MCKEY TRAINING SPECIALIST ICT 1

We Are Recycling!

- Paper
- Cans
- Plastic Bottles
- Cardboard
- Batteries

Please separate all trash from recyclables and
place in black garbage bags.
Pick up bags at lunch trailer.

**Drop off points located next to
dumpsters at:**

- Supply
- Sleeping Areas

Battery Recycling next to supply tent and
Communication trailer.

**Archaeological Guidelines
for the Shasta Lightning Complex
Shasta County, CA**

1. Sites known by the archaeologist will be marked with red plastic flagging tape.
2. Be on the lookout for unmarked prehistoric archaeological sites. These sites may include village sites that include dark midden soils and circular housepit depressions; seasonal camps marked by the presence of shiny black obsidian flakes and/or white-colored freshwater mussel shells; and hunting camps containing obsidian and basalt flakes.
3. Be on the lookout for unmarked historic archaeological sites. These sites may include old cabins and homesteads now marked by the presence of foundations, wells, and can dumps. Also present is early infrastructure related to the PG&E hydro-electric system.
4. Look for these unmarked prehistoric and historic sites in flat areas, especially adjacent to the Pit River, streams, and springs.
5. Avoid ground disturbing activities within archaeological sites where possible. If you can't avoid, minimize ground disturbance as much as possible, only clearing the surface to as minimal a depth as necessary. Try to go around sites with dozers rather than through them. Flag the site for continued avoidance during Fire Suppression Repair activities.
6. If you find artifacts leave them in place. Some artifacts may have been intentionally placed for religious or ceremonial reasons.
7. If possible, note locations of discovered artifacts, features, and/or sites on a map. Better yet take a GPS reading. Leave information for the archaeologist with the Plans Unit.
8. **While protection of non-renewable cultural resources is important, firefighter safety is even more important. Protect archaeological sites where you can but do not jeopardize firefighter safety or risk losing control of the incident when site protection is considered.**

Thanks for your help protecting California's cultural heritage.

Richard Jenkins
CAL FIRE Northern Region Archaeologist
Redding

Fire Suppression Repair

Roads

- Install waterbreaks where a waterbreak previously existed.
- Install new waterbreaks where needed
- Install or maintain a rolling dips where a rolling dip previously existed.
- Re-establish existing berms where applicable.
- Breach berms to facilitate drainage, where applicable.
- Clean culverts plugged with soil and rock resulting from fire road use.
- Remove all slash and debris from culvert inlets/outlets.
- Clean and grade ditch lines and lead off ditches.
- Water roads for dust abatement.

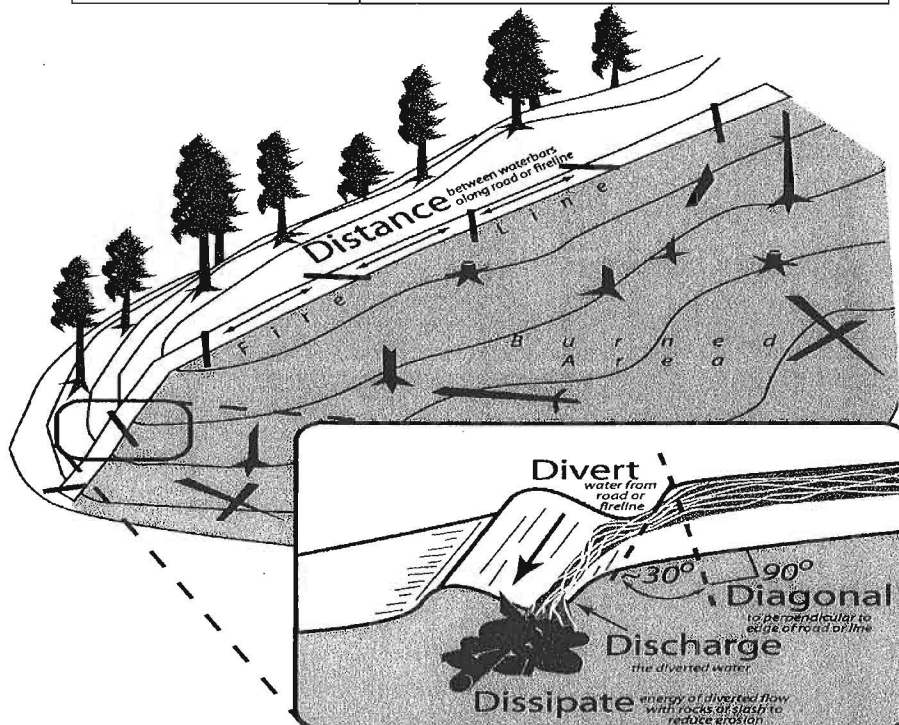
Hand Lines and Dozer Lines

- Install waterbars as described in the guidelines below. Waterbars are designed to intercept, slow and spread the precipitation run-off in order to reduce sediment transport and soil erosion. The idea is to move water off the fireline before it can build up enough energy to erode and transport sediment.

Waterbar Guidelines:

These spacing distances should be used as a *guide*. Judgment should be used in locating waterbars to minimize erosion potential. It may not be possible or necessary to place waterbars in steep or rocky areas. Install waterbars at the following recommended *minimum* intervals:

Fireline Gradient (% slope)	Minimum Distance Between Water-Bars (feet)
0 to 10	200
11 to 25	100
25+	50



DEMOBILIZATION PLAN - summarized
SHU Lightning INCIDENT

I. RELEASE PRIORITIES

The following Release Priorities have been established by the Incident Commander in concert with the Redding ECC.

1. Local Government (other operational areas)
2. Out of state resources
3. Cooperating Agencies
4. Federal Resources
5. Contract and private resource
6. CAL FIRE resources (prioritized by distance and travel time)

III. GENERAL GUIDELINES

- A. **NO RESOURCES WILL LEAVE UNTIL AUTHORIZED BY THE DEMOB UNIT.**
- B. Efforts will be made to ensure that all released personnel arrive home by 2200.
- C. Prior to leaving the Incident the Demob Unit will brief all Supervisors and Strike Team Leaders.
- D. Notification to incident personnel will be by posting surplus releases in advance.
- E. Actual departure times and ETA at destination will be relayed to Expanded Dispatch at time of departure.
- F. All Trainees will see the Training Tech Specialist prior to departure.
- G. Maximum driving duration for federal resources will not exceed 10 hours/person/day.

IV. RESPONSIBILITIES

Unit Leaders will declare resources excess to their Section Chief. Section Chiefs will declare *excess* resources to the Demob Unit. Include the date and time the resources will be surplus, their position on the incident and any transportation needs. **Use the General Message Form (ICS-213) or Team release form to list all surplus resources. Send to the RESOURCE UNIT.

V. RELEASE PROCEDURES

- A. **Functional Heads** (i.e. Section Chiefs and Unit leaders) are responsible for determining resources "Excess" to their needs and submitting the list to the Planning Section. This must be done 24 hours in advance of anticipated release in order to Notify North Ops of planned demobilization and to allow a proactive approach to reassignments or releases to the home units. The lists will provide the following information about the resource:
 1. Order/Request number
 2. Resource name or designator
 3. ETD
 4. Travel time (including rest and meals if necessary)
 5. Destination
 6. Availability for reassignment (if not available, provide valid reason)
 7. If flying, nearest Jetport and Social Security Number
- B. **RESL** will determine if there is a need at the incident that the Excess resource can fill. If no incident reassignments are necessary, the resource will be declared "Surplus" to the incident.
- C. **DMOB** will combine the approved surplus resource lists to create "Pending" resource lists to be submitted to the forest or agency dispatch for confirmation. DMOB will work with the resources and supply units so that the resource status board and resource orders can be kept up to date.
- D. When a resource status has been **confirmed** by dispatch and NOPS. DMOB will notify the resource so that check-out may begin.
- E. The Crew Leader or individual will take the Demobilization Check-out form to:
 - COML (to confirm that radio equipment is returned)
 - SUPL (to confirm all non-expendable property is returned)
 - GSUL (to inspect, clean and repair vehicles)
 - TIML (to confirm all time reporting documents are complete)
 - DOCL (to hand in logs or ratings)
- F. DMOB will be the last stop in the press release process and:
 - Sign-off, note date and time on the ICS-221
 - Note any revisions to the ETD or ETA
 - Collect the ICS-221
- G. Resource is **released** and free to leave the incident.

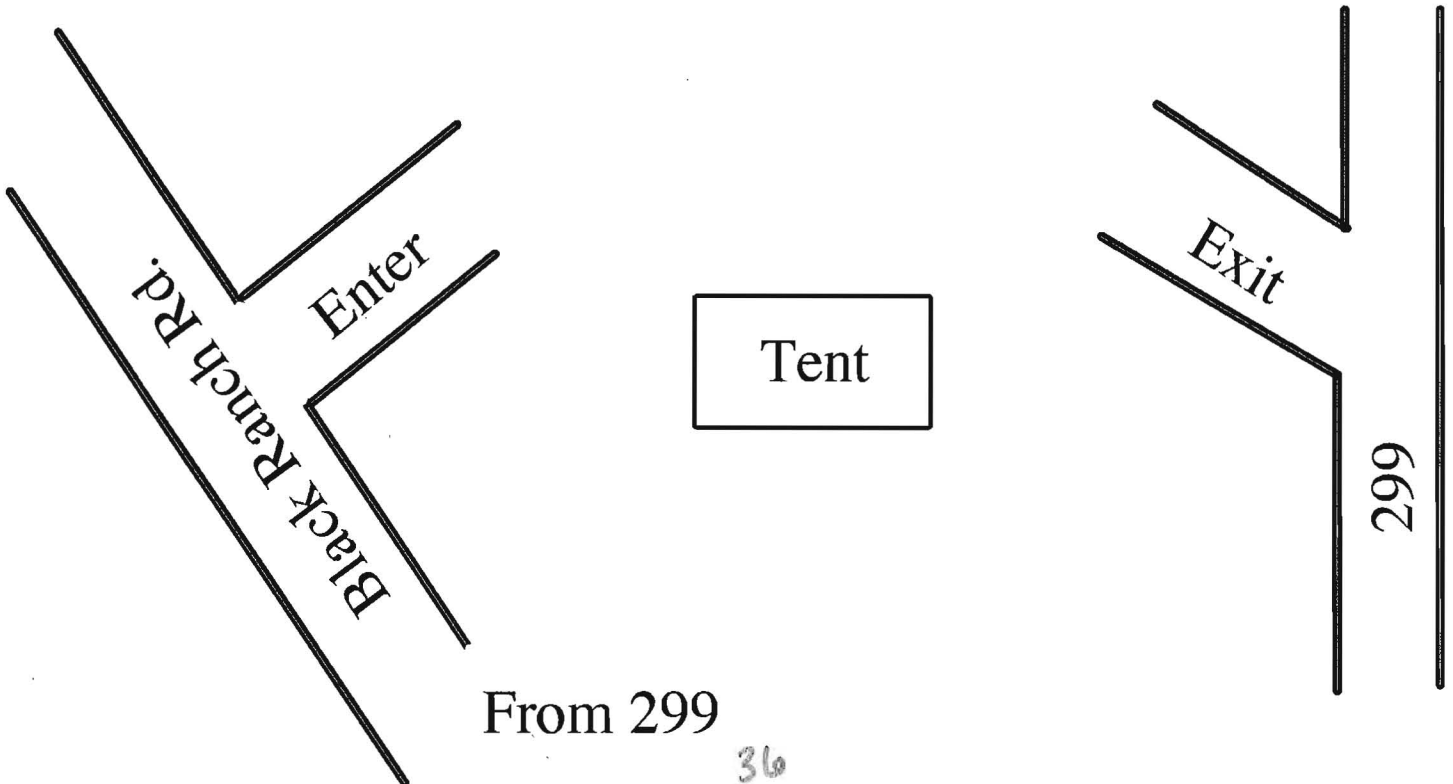
Ranch Staging for Demob

Dozers

Engines

Railroad Ties

Crews



SHASTA COMPLEX PHONE PLAN

		FAX	OFFICE
I.C.			335-3428
SAFETY			707-889-4215
LIASON			335-3373
INFO		335-3372	335-3372
CDC A. REP			335-3415
OPERATIONS			335-3408
			335-3377
PLANS			335-4084
LOGISTICS			335-3405
FINANCE		335-3382	335-3424motel
			335-3423ppts
COMMUNICATIONS			335-3402
			335-5203
ORDERING		335-3388	335-3413
			335-3411
FIRE INFO SHU OFFICE			225-2510
RESOURCE UNIT			335-4084
INCINET/CHECK-IN/DEMOB/TRAINING		335-4106	
NORTH TREE OFFICE		335-4152	
NORTH TREE GIS			335-4132
CHECK-IN			335-3386
			335-3433
STAGING----JERROD KOOS			831-251-6374
BURNEY LCA			335-2203
REPAIR			335-5542
Danny Sykes			448-2430
SCSO non emergency dispatch			245-6540
SCSO Anthony Bertain			921-3117
RADIO TECH			335-4142
COM UNIT LEADER			335-4104
HELIBASE DESK			530-336-6280
HELIBASE FINANCE			530-336-6123
OTHER IMPORTANT PHONE NUMBERS			
DAN TINNEL	OES REP		530-941-0095
WILL DARNALL	FSC		530-200-2504
HARPER KEENE	PUL		530-276-4687
TOM CRESPIAN	TUL		530-200-6097
STEVE WEIR	GSUL		707-391-6732
SEAN	COST		530-200-2514
PATTI ROYER	PPTS		916-838-0843
KIM RONGEY	PURC		916-316-7352
JAN NEWTON	PURC		916-804-2113
KATHLEEN HIE	PURC		707-287-6718
PAUL ABE	ETR		916-799-8528
SKIP SANNERS	COMP		530-966-0350
CHRIS RAMEY	PTRC		707-599-6439
LARAMIE GRIFFITH	CCC A. REP		530-227-1024
ARIK BORD	ELITE SECURITY		530-598-6498
ROGER CUMMINGS	ELITE SECURITY		530-605-5904
ELITE SECURITY	DISP		888-948-4774
			530-242-8957

DIVISION / GROUP SUPERVISOR OPERATIONAL PERIOD - DEBRIEFING FORM

Incident Name: _____ Operational Period: _____

Branch: _____ Division/Group: _____ Div/Grp Supervisor Name: _____
 Cell #: _____ Vehicle Radio #: _____

Weather:
 Time: _____ Temp: _____ Humidity: _____ Fire Behav.: _____
 Wind: _____ Fuels: _____ Topog: _____ Natural Barriers: _____

Today

General Remarks / Accomplishments / Problem Areas:

Spot Fires: _____

Safety Concerns: _____

Water Sources: _____

Drop Points: _____

Division Breaks: _____

Helispots: _____

Values at Risk: _____

ACCOUNTABILITY

AGENCY Resources Committed to Division / Group

Overhead	ENG	ENG S/T	CRW	CRW S/T	DOZ	DOZ S/T	Other

ACCOUNTABILITY

PRIVATE Resources Committed to Division / Group

Kind	Req. #	Owner / ID	Operator	2nd Oper?	Type/Size	Remarks

Reminder: Complete Vendor Shift Tickets and Vendor Evaluations

Check if resource list is continued on back.

Planning for Next Operational Period

Next Operational Period: _____ thru _____ Division / Group: _____

Division / Group RESOURCES NEEDED for Next Operational Period

Engines (Type/#)		Crews (Type/#)		Dozers	Water Tenders	Tankers	Copters	Other Equipment	Overhead
S/T	SR	S/T	SR	Type/#	Type/#	Type/#	Type/#	Kind#	Kind#

Division / Group Assignments -- Special Needs Next Operational Period

TOMORROW!

Work Assignments:

Special Needs:

MAP of Current and Expected Conditions

Please Turn in this Form to Planning Section - We have Color Maps

