

SHASTA LIGHTNING

CA SHU 005594

August 12, 2009 0700-0700

SAFETY IS AS SAFETY DOES

DRIVING SPEEDS

SLOW DOWN IN CAMP

SLOW DOWN ON THE FIRE LINE

USE YOUR HEADLIGHTS

HYDRATION

HYDRATION STARTS THE DAY BEFORE
AND CONTINUES THROUGHOUT YOUR SHIFT



TERRAIN AND FUELS MAKE
ESCAPE TO SAFETY ZONES
DIFFICULT

S
A
F
E
T
Y

S
A
F
E
T
Y


S
A
F
E
T
Y


I
T
'
S

U
P

T
O

Y
O
U
!

INCIDENT OBJECTIVES	1. Incident Name SHU Lightning Complex	2. Date 08/11/09	3. Time 2200
4. Operational Period August 12-13, 2009 0700 - 0700			
<p>5. General Control Objectives for the Incident (include alternatives)</p> <p style="text-align: center;">INCIDENT MANAGEMENT OBJECTIVES</p> <ul style="list-style-type: none"> • Provide for firefighter and public safety. • Provide for initial attack within Eastern Shasta County. • Keep costs commensurate with values at risk. • Provide accurate and timely information to the public, media, and cooperating agencies. • Communicate with cooperators regarding impacts from the fires to the surrounding communities and the assets at risk. • Minimize fire suppression impacts to cultural resources, protected species, and riparian areas. <p style="text-align: center;">INCIDENT CONTROL OBJECTIVES</p> <ul style="list-style-type: none"> • Incident Control Objectives are listed on the ICS 204s for each Branch. 			
6. Weather Forecast for Period SEE ATTACHED WEATHER FORECAST			
7. General Safety Message SEE ATTACHED SAFETY MESSAGE			
8. Attachments (mark if attached)			
<input checked="" type="checkbox"/> Organization List - ICS 203	<input checked="" type="checkbox"/> Medical Plan - ICS 206	<input checked="" type="checkbox"/> (Other) WEATHER FORECAST	
<input checked="" type="checkbox"/> Div. Assignment Lists - ICS 204	<input checked="" type="checkbox"/> Incident Map	<input type="checkbox"/>	
<input checked="" type="checkbox"/> Communications Plan - ICS 205	<input checked="" type="checkbox"/> Traffic Plan	<input type="checkbox"/>	
9. Prepared by (Planning Section Chief) Jim Ferguson 		10. Approved by (Incident Commander) Doug Wenham	

ORGANIZATION ASSIGNMENT LIST			9. Operations Section			
1. Incident Name		SHU Lightning Complex		Chief	B.Gouvea/E.Ullman - S. Todd (T)	
2. Date		8/11/2009		Deputy	B. Estes	
3. Time		2000				
4. Operational Period		8/12-13/2009		0700-0700		
5. Incident Commander and Staff			a. Chalk Branch			
Incident Commander		D. Wenham		Branch Director	D. Quigley	
Deputy		J. Sisneros		Division S	G. Quigley	
Safety Officer		L. Green - H. Love(T)		Division T	D. Hawks	
Information Officer		S. Lauderdale		Division U/V	K. Twohey - P. Purvis (T)	
Liaison Officer		J. Terpstra - S. Jones (T)		Division W	R. Hemstark	
				Division X	J. Morris	
6. Agency Representative			b. Goose Branch			
Agency		Name		Branch Director	M. Hebrard	
Shasta Co Sheriff		D. Dean		Division D	D. Brady	
Hat Creek LNF Rd		M. Price		Division E/F	J. Martin	
CDCR		Lt M. Ahlin		Division N	R. Joyner	
CAL EMA		D. Tinnel				
BLM		J. Martinez				
			c. Cassel Division A/C/Y			
			Division A/C/Y		A. Jaramillo	
			d. Burney LCA Branch			
			Branch Director		J. Mobley	
			Group 1-18		B. Thomas	
			1-34 Group		D. Gaddy	
7. Planning Section			e. Fire Suppression Repair Group			
Chief		J. Ferguson		Group	B. Beck	
Deputy						
Resource Unit		G. Schultz - D. Hall (T)		f. Branch		
Situation Unit		E. Hucks - D. Gordon (T) - S. Johnson (T)		Branch Director		
Documentation Unit		G. Schultz		Division/Group		
Demobilization Unit		R. Wedel - D. Pucci (T)		g. Branch		
Human Resources				Branch Director		
Technical Specialists		(name / specialty)		Division/Group		
M. McKey / Training		K. DeSena/GISS		h. Air Operations Branch		
J. Turner - E. Kurtz/FBAN		S. Estes/Motels		Air Operations Branch Director		D. Reese - A. Lujan(T)
J. Tonkin/IMET		K. Evans/Crew Tech Spec		Air Support Supervisor		N. Truax (T) - M. Wright (T)
R. Carr - J. Roberson/Hired Equipment				Air Attack Supervisor		M. Kendall / S. Brockman-B. Reed (T)
L. Pollack - S. Velasquez/Arch				Helicopter Coordinator		R. Yniguez - J. Serrano (T)
8. Logistics Section			Helicopter Coordinator			
Chief		D. Pedersen - K. Lowe (T)		10. Finance Section		
Deputy				Chief		W. Darnall
Service Branch Dir.				Deputy		
Support Branch Dir.				Time Unit		T. Crespin
Supply Unit		M. Jarske - J. Walls (T)		Procurement Unit		H. Keene
Facilities Unit		E. Solis		Comp/Claims Unit		
Ground Support Unit		S. Weir - C. Simmons		Cost Unit		S. Kavanaugh
Communications Unit		T. Webb				
Medical Unit		J. Vanatta				
Security Unit						
Food Unit		S. Ortiz				
			Prepared by (Resource Unit Leader)			
			 G. Schultz			



CALFIRE INCIDENT COMMAND TEAM 1



UNIT/ACTIVITY LOG ICS 215A Rev. 06-09	1. INCIDENT NAME: SHASTA LIGHTNING COMPLEX	2. DATE PREPARED: August 11, 2009	3. TIME PREPARED: 2000 HR
--	--	---	-------------------------------------

4. PREPARED BY: BRENT STANGELAND SOF1 T	5. LEADER NAME: LINDA GREEN, ISO TEAM 1	6. OPERATIONAL PERIOD: 8/12/2009 TO 8/13/2009	
---	---	---	--

INCIDENT RISK ANALYSIS - WILDLAND FIRES

DIVISION	HAZARDOUS ACTIONS / CONDITIONS	MITIGATIONS / WARNINGS / REMEDIES
CHALK	SNAG HAZARDS (Includes Utility Poles) DOWNHILL FIRE LINE SPOT FIRES AND HOLDING OPERATIONS FIRING OPERATIONS HYDRATION	Follow Hazard Tree Safety Guidelines (IRPG p. 80). Steep/rocky terrain: watch footing/maintain spacing. Post look outs. Conduct thorough briefing for all personnel Drinking water before, during and after shifts.
GOOSE	SNAG HAZARDS (Includes Utility Poles) DOWNHILL FIRE LINE HOLDING AND MOP UP OPERATIONS FATIGUE HYDRATION	Follow Hazard Tree Safety Guidelines (IRPG p. 80). Steep/rocky terrain: watch footing/maintain spacing. Flare-ups generally occur in: grass & light brush. Be alert for signs of fatigue, take breaks. Drinking water before, during and after shifts.
CASSEL	SNAG HAZARDS (Includes Utility Poles) FATIGUE HYDRATION SUPPPRESSION REPAIR ACTIVITY HOLDING AND MOP UP OPERATIONS	Follow Hazard Tree Safety Guidelines (IRPG p. 80). Be alert for signs of fatigue, take breaks. Drinking water before, during and after shifts. Conduct thorough briefing for all personnel. Flare-ups generally occur in: grass & light brush.
BURNEY LCA	FIRE BEHAVIOR LINE CONSTRUCTION HYDRATION WEATHER DRIVING HAZARDS	Base all actions on current/expected fire behavior. Ensure LCES in place. Drinking water before, during and after shifts. Access to weather & fire behavior forecasts? Be alert for other drivers, civilians, & wildlife.
Suppression Repair	HEAVY EQUIPMENT STEEP TERRAIN COMMUNICATIONS	Stay 50' from fire supression equipment Watch for rolling material. Know the communications plan.



SHU Complex Incident Weather Forecast



FORECAST NO: 9
PREDICTION FOR: Wednesday Day Shift

NAME OF FIRE: SHU Complex
UNIT: CA-SHU 5594

SHIFT DATE: Aug 12th, 2009
FORECAST ISSUED: 1900 August 11th, 2009

Incident Meteorologist: Jeff Tonkin

....Potential for Offshore Flow Pattern This Weekend...

WEATHER DISCUSSION: A trough of low pressure will remain off the coast and then cross fire area on Friday. This will be followed by a building ridge of high pressure and the development of an offshore flow pattern that may last through the weekend. The pattern would promote moderate northeast winds across the Chalk Fire at night and during the morning hours...accompanied by extremely poor rh recovery.

WEATHER FORECAST WEDNESDAY DAY SHIFT:

WEATHER: Clear but smokey...especially in western drainages through midday.

LIGHTNING ACTIVITY LEVEL: 1 **CHANCE OF WETTING RAIN:** 0%

TEMPERATURES: 84 - 88 valleys/drainages. 76 - 81 upper slopes/ridges.

MIN HUMIDITY: 15 - 19% valleys/drainages. 18 - 24% upper slopes/ridges.

WINDS (20 FOOT):

RIDGETOP - East or Northeast 2 to 3 mph until 1000 local. Winds becoming Southwest 3 - 6 mph...gusts to 8 to 13 mph between 1400 and 1700. Winds diminishing around sunset.

LOWER ELEVATION/DRAINAGE - Southwest or upslope 2 to 4 mph until 1200 local...then increasing to 5 to 8 mph with gusts 8 to 13 mph between 1300 and 1800 local.

STABILITY / INVERSION: Continued Stable with a little better mixing this afternoon.

WEATHER FORECAST TONIGHT: (Updated Forecast Broadcast by Comms tonight at 1900)

WEATHER: No clouds but Smoke laying in while upper smoke drifts northeast. Better Recovery.

MIN TEMPERATURES: 42 to 47 drainages. 38 - 42 above 5000 ft.

MAX HUMIDITY: 66 - 71% around 3500 ft. 70-80% above 5000 ft.

WINDS (20 FOOT):

RIDGETOP - South and Southwest 3 to 6 mph with gusts to 12 mph until 0300...then becoming East or Northeast 1 to 3 mph through 1000 Local.

MIDSLOPE/DRAINAGE - South and Southwest 3 to 6 mph until 2300...then east and northeast or down-slope 2- 4 mph through 1000 local.

OUTLOOK FOR THURSDAY: Clear and a little more unstable. Gustier west and southwest winds. Temps: 81 - 86. Min RH: 19-24%. Wind: West and Southwest 8 to 12 mph...gusts 15 to 20 mph in the afternoon.

EXTENDED FORECAST FOR FRIDAY THROUGH SUNDAY: Gusty East and Northeast winds at night and during the early morning hours along the Western perimeter. Winds will be accompanied by very poor rh recovery. Peak winds will occur Saturday Night and Sunday Night. Winds may remain out of the east during the day but should be lighter. Max temps 88 to 93 valleys...80-85 ridges. RH's will range from 18 to 25% with very little recovery.

FIRE BEHAVIOR FORECAST

FORECAST NUMBER 09	TYPE OF FIRE SURFACE
FIRE NAME SHU LIGHTNING COMPLEX	OPERATIONAL PERIOD August 12, 2009
DATE ISSUED August 11, 2009	TIME ISSUED 2100
UNIT Shasta Ranger Unit	SIGNED <i>Jim Turner</i> / <i>Eric Kurtz</i> Jim Turner/Eric Kurtz

WEATHER SUMMARY

SKY/WEATHER... CLEAR... EXCEPT FOR SMOKE.
MAX TEMPERATURE... 90° IN THE VALLEY TO 83° ON THE SLOPES AND RIDGE TOPS
MIN HUMIDITY 15% IN THE VALLEY TO 18% ON THE RIDGES WITH POOR RECOVERY IN THE PM TO EARLY AM HOURS
GEOGRAPHICAL TREND... WARMING AND DRYING, WINDS BECOMING WESTERLY IN THE AFTERNOON.
LAL... 1
CHANCE OF DRY LIGHTNING... 0%
CHANCE OF WETTING RAIN... 0%

NOTE

MAIN PIT RIVER DRAINAGE WILL INFLUENCE LOCAL SLOPE EDGE WINDS IN THE LOWER AREAS OF DIVISIONS TANGO, UNIFORM AND SIERRA

FIRE BEHAVIOR INPUTS

FINE DEAD FUEL MOISTURE = 3 TO 5% DEPENDING ON FUEL SHADING
1000 HR FUEL MOISTURE = 8% (KILN DRY LUMBER = 12%)
PROBABILITY OF IGNITION = 70% IN THE SUN / 40% IN THE SHADE
SPOTTING DISTANCE = 0.6 MILES FROM SINGLE TREE TORCHING MIDSLOPE.

NOTE POST LOOKOUTS TO RECORD AND ADVISE OPERATIONS OF CRITICAL FIRE WEATHER CHANGES.

SPECIFIC

CREWS MAY EXPERIENCE SIGNIFICANT FIRE RUNS IN THE AFTERNOON STARTING AROUND 1200 HRS. ACTIVE FIRE MOVEMENT IS BY SLOPE AND WIND ALIGNMENT, WITH FIREBRANDS CASTING DOWNWIND AND ROLLOUTS ON STEEP SLOPES. THIS TYPE OF RUN MAY EXCEED 12 TO 15 CHAINS PER HOUR IN THE BRUSH/TIMBER UNDERSTORY WITH 8 FOOT FLAME LENGTHS: MAXIMUM SPOTTING DISTANCES OF 0.6 MILES. RUNS IN TIMBER LITTER MAY RESULT IN RATE OF SPREAD (ROS) OF 8 CHAINS PER HOUR WITH 2 TO 3 FOOT FLAME LENGTHS. DEAD & DOWNED FUELS ARE VERY RECEPTIVE FUEL BEDS FOR EMBERS. LIVE FUEL MOISTURES IN BRUSH ARE 84% (80% IS CRITICAL IN MANZANITA). LATERAL MOVING FIRES BURNING ON THE SOUTH AND SOUTHWEST SLOPES ARE BEING FUELED BY GROUND LITTER AND HAVE A SLOWER RATE OF SPREAD. STEEP TERRAIN AND ROLL-OUT PRESENT A HAZARD TO THE LINE. FINE DEAD FUEL MOISTURES WILL BE AT THE LOWEST FROM 1400-1800 HRS. RANGING BETWEEN 3-5%. AREAS OF DIRTY BURN EXIST THROUGHOUT ALL FIRES AND HAVE THE POTENTIAL FOR REBURN IF WINDS BEGIN TO SHIFT OR A NEW START OCCURS. IN DIVISIONS TANGO, UNIFORM AND SIERRA EXPECT WINDS TO BECOME SHIFTING AND ERRATIC IN THE MID AM HOURS AROUND 1100HRS. AND IN THE LATE PM HOURS AROUND 2300HRS.

AIR OPERATIONS

- VISIBILITY MAYBE IMPAIRED DUE TO THE LACK OF TRANSPORT WINDS IN THE AFTERNOON HOURS.

SAFETY

- PERSONNEL NEED TO STAY ALERT TO CHANGES IN WIND DIRECTION AND SPEED.
- CREWS NEED TO CONTINUE PAYING CLOSE ATTENTION FOR HIDDEN SPOT FIRES IN ALL FUEL BED TYPES.
- WEAKENED SNAGS MAY FALL ACROSS CONTAINMENT LINES.
- STEEP TERRAIN AND UNDERSLUNG LINE MAY CAUSE ROLL-OUTS ACROSS CONTAINMENT LINES.
- DOWNED HEAVY FUELS MAY CONTAIN HIDDEN POCKETS OF BURNING MATERIAL.

DIVISION ASSIGNMENT LIST		1. Branch Chalk		2. Division/Group S			
3. Incident Name SHU Lightning Complex		4. Operational Period Date: 8/12/09-8/13/09				Time: 0700-0700	
5. Operations Personnel							
Operations Chief		Gouvea / Ullman (N)		Division/Group Supervisor		G. Quigley	
Branch Director		D. Quigley		Air Attack Supervisor No.			
6. Resources Assigned this Period							
Strike Team/Task Force/ Resource Designator	Leader	Number Persons	Trans. Needed	Drop Off PT./Time	Pick Up PT./Time		
SOFL (Safety 2)	Lindgren	1		DP 15	0800		
SOFL (Safety 9)	Demattei	1		DP 15	0800		
FELB	Kramer	1		DP 15	0800		
FALC	Bell	1		DP 15	0800		
*FOBS	Green - Cowles (T)	2		DP 15	0800		
*FOBS	Johnson - McBride (T)	2		DP 15	0800		
ST XSA 4154C	Worthington	22		DP 15	0800		
ST TGU 9250C	Johnson	16		DP 15	0800		
ST MEU 9114G	Sandahl	33		DP 15	0800		
ST HUU 9126G	Rudesill	33		DP 15	0800		
ST LNU 9141G	Thyarks	33		DP 15	0800		
ST TGU 9255G	Wallen	33		DP 15	0800		
ST MMU 9470G	Loffin	35		DP 15	0800		
CRW Diamond HS	Varney	19		DP 15	0800		
ST LNU 9144L	Vierra	5		DP 15	0800		
ST LNU 9147L	Head	7		DP 15	0800		
ST MMU 9428L	Daly	6		DP 15	0800		
WT Cattaneo E-56	Chovesta	2		DP 15	0800		
WT SHS 33 E-80	Murphy	2		DP 15	0800		
WT All Agency E-268	Hill	2		DP 15	0800		
7. Control Operations Complete firing along Skunk Ridge. Keep fire North of River Road, South of 37N30 Road, East of Skunk Ridge, and West of Pit 3 Dam.							
8. Special Instructions * FOBS are assigned Branch wide. Incident Recycling- Bottles and cans to be placed in bags separate from trash, place at designated locations by Supply or by dumpsters in Camp. Backhaul all trash & place in dumpsters in Camp.							
9. Division/Group Communication Summary							
Function	Frequency	System	Channel	Function	Frequency	System	Channel
Command	Rx 151.175W Tx 159.450W	King NIFC	CDF CMD 9 Tone 9	Logistics	159.4725	King NIFC	V Tac-14
Tactical Div/Group	168.250N	King NIFC	NIFC Tac-7	Air to Ground	151.220	King NIFC	CDF A/G
Prepared by (Resource Unit Ldr.) Gabriel Schultz		Approved by (Planning Sect. Ch.) <i>JR Ingman PSC1</i>			Date 8/11/09		Time 2300

DIVISION ASSIGNMENT LIST		1. Branch Chalk		2. Division/Group U/V			
3. Incident Name SHU Lightning Complex		4. Operational Period Date: 8/12/09-8/13/09 Time: 0700-0700					
5. Operations Personnel							
Operations Chief	Gouvea / Ullman (N)		Division/Group Supervisor	Brunton			
Branch Director	D. Quigley		Air Attack Supervisor No.				
6. Resources Assigned this Period							
Strike Team/Task Force/ Resource Designator	Leader	Number Persons	Trans. Needed	Drop Off PT./Time	Pick Up PT./Time		
SOFL (Safety 10)	Piccinini	1		DP 16	0800		
FELB	McGregor	1		DP 16	0800		
FALC	Russell	1		DP 16	0800		
FALC	Southard	1		DP 16	0800		
ST SHU 9243C	McLean	21		DP 16	0800		
ST MMU 9421C	Anderson	21		DP 16	0800		
ST TGU 9259G	Boston	35		DP 16	0800		
ST BDU 9389G	Volmer	37		DP 16	0800		
WT Zabel E-240	Zabel	2		DP 16	0800		
WT 570 Big Bend E-301	Green	2		DP 16	0800		
GRDR Leach E-205	Leach	2		DP 16	0800		
7. Control Operations Mop-up and patrol. Beware of spotting across lines. Keep fire North of River Road, South of 37N30 Road, East of Skunk Ridge, and West of Pit 3 Dam.							
8. Special Instructions Incident Recycling- Bottles and cans to be placed in bags separate from trash, place at designated locations by Supply or by dumpsters in Camp. Backhaul all trash & place in dumpsters in Camp.							
9. Division/Group Communication Summary							
Function	Frequency	System	Channel	Function	Frequency	System	Channel
Command	Rx 151.175W Tx 159.450W	King NIFC	CDF CMD 9 Tone 9	Logistics	159.4725	King NIFC	VTac-14
Tactical Div/Group	173.9625N	King NIFC	USFS R-5 T-5	Air to Ground	151.220	King NIFC	CDF A/G
Prepared by (Resource Unit Ldr.) Gabriel Schultz		Approved by (Planning Sect. Ch.) <i>JR Ingusma PSC 1</i>		Date 8/11/09		Time 2300	

DIVISION ASSIGNMENT LIST		1. Branch Chalk		2. Division/Group X				
3. Incident Name SHU Lightning Complex		4. Operational Period Date: 8/12/09-8/13/09 Time: 0700-0700						
5. Operations Personnel								
Operations Chief		Gouvea / Ullman (N)		Division/Group Supervisor		Morris		
Branch Director		D. Quigley		Air Attack Supervisor No.				
6. Resources Assigned this Period								
Strike Team/Task Force/ Resource Designator		Leader		Number Persons	Trans. Needed	Drop Off PT./Time	Pick Up PT./Time	
SOFL (Safety 1)		Brownell		1		DP 11	0800	
FALC		Porter		1		DP 11	0800	
FALC		Vaughn		1		DP 11	0800	
ST XNE 4101C		Good		19		DP 11	0800	
STC XSJ 4175C		Siefert		17		DP 11	0800	
ST TUU 9473G		Delashmutt		33		DP 11	0800	
CRW Sugar Pine 5		Glover		16		DP 11	0800	
DOZ Hagen E-61		Hagen		2		DP 11	0800	
WT Carlton E-39		Rynes		2		DP 11	0800	
WT Cattaneo E-54		Williamson		2		DP 11	0800	
WT Oilar E-314		Oilar		2		DP 11	0800	
7. Control Operations Locate and suppress spots. Mop up 200'. Keep fire North of River Road, South of 37N30 Road, East of Skunk Ridge, and West of Pit 3 Dam.								
8. Special Instructions Incident Recycling- Bottles and cans to be placed in bags separate from trash, place at designated locations by Supply or by dumpsters in Camp. Backhaul all trash & place in dumpsters in Camp.								
9. Division/Group Communication Summary								
Function	Frequency	System	Channel	Function	Frequency	System	Channel	
Command	Rx 151.175W Tx 159.450W	King NIFC	CDF CMD 9 Tone 9	Logistics	159.4725	King NIFC	V Tac-14	
Tactical Div/Group	154.295W	King NIFC	White Fire-3	Air to Ground	151.220	King NIFC	CDF A/G	
Prepared by (Resource Unit Ldr.) Gabriel Schultz		Approved by (Planning Sect. Ch.) <i>C. R. Judge</i> BSC			Date 8/11/09		Time 2300	

DIVISION ASSIGNMENT LIST		1. Branch Goose		2. Division/Group D			
3. Incident Name SHU Lightning Complex		4. Operational Period Date: 8/12/09 – 8/13/09 Time: 0700-0700					
5. Operations Personnel							
Operations Chief		Gouvea / Ullman (N)		Division/Group Supervisor		Brady	
Branch Director		*Hebrard		Air Attack Supervisor No.			
6. Resources Assigned this Period							
Strike Team/Task Force/ Resource Designator	Leader		Number Persons	Trans. Needed	Drop Off PT./Time	Pick Up PT./Time	
FELB	Wolford		1		DP 29	0800	
FOBS	Frates		1		DP 29	0800	
FOBS	Cash		1		DP 29	0800	
**ST KRN 9320 C	Brady		17		DP 29	0800	
ST HUU 9127 G	Parker		31		DP 29	0800	
ST SCU 9161L	Felix		3		DP 29	0800	
ST FKU 9438L	Jones		4		DP 29	0800	
WT 49er E-266	Sasser		2		DP 29	0800	
WT 49er E-267	Nolan		2		DP 29	0800	
7. Control Operations							
Mop-up 200 feet and patrol. Keep fire North of Goose Mtn., East of Big Bend Rd., South of Pit River, West of Pit 3 Dam.							
FOBS Frates and Cash are Branch wide resources.							
Special Instructions							
* 12 Hour Shift							
** ST KRN 9320C Leader Brady Is the Division Supervisor.							
Incident Recycling-Bottles and cans to be placed in bags separate from trash. Place at designated location by Supply or by dumpsters in Camp. Back haul all trash and place in dumpsters in Camp.							
9. Division/Group Communication Summary							
Function	Frequency	System	Channel	Function	Frequency	System	Channel
Command	Rx 151.175W Tx 159.450W	King NIFC	CDF CMD 9 Tone 9	Logistics	159.4725	King NIFC	V Tac-14
Tactical Div/Group	151.1375 N	King NIFC	V-Tac 11	Air to Ground	151.220	King NIFC	CDF A/G
Prepared by (Resource Unit Ldr.) Gabriel Schultz		Approved by (Planning Sect. Ch.) <i>C. R. Fuge</i> PSCI			Date 8/11/09		Time 2000

DIVISION ASSIGNMENT LIST				1. Branch Burney LCA		2. Division/Group Group 1-18		
3. Incident Name SHU Lightning Complex				4. Operational Period 12 hour operational period Date: 8/12/09 Time: 0700-1900				
5. Operations Personnel								
Operations Chief		Gouvea / Ullman (N)		Division/Group Supervisor		Thomas		
Branch Director		Mobley		Air Attack Supervisor No.				
6. Resources Assigned this Period								
Strike Team/Task Force/ Resource Designator		Leader		Number Persons	Trans. Needed	Drop Off PT./Time	Pick Up PT./Time	
ENG SHS 570		Hazeltine		3		Big Bend Station 19	0800	
ENG SHU 2451		Keown		4		Big Bend Station 19	0800	
ENG SHU 2461		Boic		4		Big Bend Station 19	0800	
ENG SHU 2463		Thomson		3		Big Bend Station 19	0800	
ENG SHU 2467		Wilkerson		4		Big Bend Station 19	0800	
DOZ SHU 2442		Johnson		1		Big Bend Station 19	0800	
W/T All States E-40		MacCordy		1		Big Bend Station 19	0800	
7. Control Operations Mop-up and patrol known fires, Identify and suppress new fires.								
8. Special Instructions Incident Recycling-Bottles and cans to be placed in bags separate from trash. Place at designated location by Supply or by dumpsters in Camp. Back haul all trash and place in dumpsters in Camp.								
9. Division/Group Communication Summary								
Function	Frequency	System	Channel	Function	Frequency	System	Channel	
Command	Rx 151.175W Tx 159.450W	King NIFC	CDF CMD 9 Tone 9	Logistics	159.4725	King NIFC	V Tac-14	
Tactical Div/Group	168.050N	King NIFC	NIFC Tac-1	Air to Ground	151.220	King NIFC	CDF A/G	
Prepared by (Resource Unit Ldr.) Gabriel Schultz			Approved by (Planning Sect. Ch.) <i>AR Ferguson</i> PSC1			Date 8/11/09		Time 2300

DIVISION ASSIGNMENT LIST			1. Branch		2. Division/Group Fire Suppression Repair Group (Page 2)		
3. Incident Name SHU Lightning Complex			4. Operational Period: 12 hour operational period Date: 8/12/09 Time: 0700-1900				
5. Operations Personnel							
Operations Chief		Gouvea/Ullman (N)		Division/Group Supervisor		Beck	
Branch Director				Air Attack Supervisor No.			
6. Resources Assigned this Period							
Strike Team/Task Force/ Resource Designator	Leader	Number Persons	Trans. Needed	Drop Off PT./Time	Pick Up PT./Time		
DOZB	Bloom	1		Goose Branch	0800		
FOBS	Harvey	1		Goose Branch	0800		
DOZ Packway E-23	Taylor	1		Goose Branch	0800		
DOZ Silverstar E-125	Shanklin	1		Goose Branch	0800		
*WT Cattaneo E-53	McLearn	2		Goose Branch	0800		
*WT B&G E-118	Brock-Jarrett	2		Goose Branch	0800		
*WT Hoaglan E-241	Hoaglan	2		Goose Branch	0800		
*WT Stotts E-269	Stottsberry	2		Goose Branch	0800		
GRD Hathaway E-319	Hathaway	1		Goose Branch	0800		
THSP	Chartier	1		Chalk Branch	0800		
FOBS	Hill	1		Chalk Branch	0800		
WT AWB E-329	Henning	1		Chalk Branch	0800		
WT WET VET E-328	Guinn	1		Chalk Branch	0800		
GRD Sunrise E-330		1		Chalk Branch	0800		
7. Control Operations Assess fire suppression repair needs. Water bar fire lines. Water and grade seasonal roads. Contact each Branch and Division upon arrival and departure.							
8. Special Instructions *WTs on Goose Branch are on a 24 hour shift. Incident Recycling-Bottles and cans to be placed in bags separate from trash. Place at designated location by Supply or by dumpsters in Camp. Back haul all trash and place in dumpsters in Camp.							
9. Division/Group Communication Summary							
Function	Frequency	System	Channel	Function	Frequency	System	Channel
Command	Rx 151.175 W Tx 159.450 W	King NIFC	CDF CMD 9 Tone 9	Logistics	159.4725	King NIFC	V Tac-14
Tactical Div/Group	168.600 N	King NIFC	NIFC Tac-3	Air to Ground	151.220	King NIFC	CDF A/G
Prepared by (Resource Unit Ldr.) Gabe Schultz		Approved by (Planning Sect. Ch.) <i>R. Ferguson</i> PSC 1			Date 8/11/09		Time 2000

AIR OPERATIONS SUMMARY

OPERATIONAL PERIOD DATE: DAY SHIFT DATE: 08/12/09

START: 0830 END: 1940

(Expanded Form for Large Operations)

1. INCIDENT NAME: Shasta Lightning Complex	2. PREPARED BY: A.Lujan	PREPARED DATE/TIME: 08/11/09 1900
---	-------------------------	-----------------------------------

4. REMARKS (Safety Notes, Hazards, Air Operations Special Equipment,, etc.): All GPS data to be collected (degrees, minutes & decimal minutes) ** <u>Avoid</u> aerial application of retardant or foam within <u>300'</u> of waterways, bodies of water. If retardant is dropped within these areas, <u>notify</u> AOBD with Lat & Long, est. of gallons, and a map. TRACK RETARDANT DROP LOCATIONS	SUNRISE: 0610	SUNSET : 2013	5. TFR: 1. Notam 9/3026
---	---------------	---------------	--------------------------------

6. PERSONNEL	Phone	7. REQUENCIES	AM	FM	8. FIXED-WING # Avail / Type/ Make-Model / FAA N# / Base(s)
AOBD: Alex Lujan (T) AOBD: Dan Reese	530-598-2645	AIR/AIR FW:	127.025	170.4625	Air Tactical AA-240 AA-500
ATGS: Scott Brockman ATGS: Crystal Henson	530-226-2695	AIR/AIR RW:	128.675		
HLCO: R Yniguez, B Reid (T) HLCO: Scott Upton, J Serrano (T)	530-448-2450 707-889-4373	AIR/GROUND:		151.220	Lead planes
ASGS: N Truax (T) / M Wright (T)	530-448-2411	DECK:	163.100		Airtankers 1 Type 1 2 Type 3
HEBM. Randy Fergosa Scott Corn(T)	530-200-3263 530-227-4887	COMMAND RPT	Command 9 Tone 9		Other :
HLCO: E Gomberg (T)	530-448-2408	Air Guard	168.625		
		TOLC	122.80		

9. HELICOPTERS (Use Additional Sheets As Necessary)

FAA N#	TY	MAKE/MODE	BASE	AVAIL	START	REMARKS	FAA N#	TY	MAKE/MODE	BASE	AVAIL	START	REMARKS
1HM	3	206 L4	FR	0830		HELCO	FY	1	BV 107	FR	0830		
8GH	3	206 B3	FR	0830		HELCO	784	1	S 61	FR	0830		
726	3	206 B3	FR	0830		Relief Helco	96W	1	S 61	FR	0830		
3SH	3	206 B3	FR	0830		Recon / Mapping							
205	2	UH1H	FR	0830									
207	2	UH1H	FR	0830									
8HM	2	UH1B	FR	0830									
217	2	214	FR	0830		Standard							
6TV	2	UH1H	FR	0830									
1GH	2	UHIH	FR	0830									
C 101	2	205	FR	0830		Medivac/ Short Haul							

22

INCIDENT RADIO COMMUNICATIONS PLAN			Shasta Lightning Incident			Date/Time Prepared 8/11/2009 - 20:00:00 AM		Operational Period Date/Time 8/12/2009/0700-0700		
Ch #	Function	Channel Name/Trunked Radio System Talkgroup	Assignment	RX Freq N or W	RX Tone/NAC	TX Freq N or W	Tx Tone/NAC	Mode A, D or M	Remarks	
1	Command	CDF Command-1	Not assigned	151.355 W		159.300 W	156.7 (6)	A	Not assigned	
2	Command	CDF Command-9	Command	151.175 W		159.450 W	100.0 (9)	A	Grp 3 Ch.9	
3	Command	NIFC Cmnd-22	Not assigned	165.450 N		172.5125 N	156.7 (6)	A	Not assigned	
4	Tactical	V-Tac 11	Goose Div. D	151.1375 N		151.1375 N	156.7	A	Grp 3 Ch.146	
5	Tactical	V-Tac 13	Goose Div. E&F	158.7375 N		158.7375 N	156.7	A	Grp 3 Ch.148	
6	Tactical	NIFC Tac-5	Not assigned	166.725 N		166.725 N		A	Grp 3 Ch.103	
7	Tactical	NIFC Tac-6	Goose Div. N	166.775 N		166.775 N		A	Grp 3 Ch.104	
8	Tactical	NIFC Tac-7	Chalk Div. S	168.250 N		168.250 N		A	Grp 3 Ch.105	
9	Tactical	USFS R-5 T-4	Chalk Div. T	173.9125 N		173.9125 N		A	Grp 3 Ch.106	
10	Tactical	USFS R-5 T-5	Chalk Div. U&V	173.9625 N		173.9625 N		A	Grp 3 Ch.107	
11	Tactical	USFS R-5 T-6	Not assigned	173.9875 N		173.9875 N		A	Grp 3 Ch.108	
12	Tactical	White Fire-2	Chalk Div. W	154.265 W		154.265 W		A	Grp 3 Ch.151	
13	Tactical	White Fire-3	Chalk Div. X	154.295 W		154.295 W		A	Grp 3 Ch.152	
14	Tactical	NIFC Tac-1	Burney LCA	168.050 N		168.050 N		A	Grp 3 Ch.99	
15	Tactical	NIFC Tac-3	Suppression Repair	168.600 N		168.600 N		A	Grp 3 Ch.101	
16	Tactical	V-Tac-12	Cassel	154.4525 N		154.4525 N	156.7	A	Grp 3 Ch.147	
17	Tactical	CDF-A/G	Air to Ground	151.2200 N		151.2200 N		A	Air to Ground Grp3Ch126	
18	Camp/Logistics	V-Tac-14	Logistics	159.4725 N		159.4725 N		A	Base Camp UseGrp3Ch4149	
19	Medical	CALCORD	Medical	156.075 W		156.075 W		A	Medical Emerg. Grp3Ch.144	
20	Emergency	Air Guard	Emergency	168.625 N		168.625 N	110.9	A	Emerg. Air ContactGrp3Ch138	
Prepared By (Communications Unit) Tom Webb COML CALFIRE Team 1					Incident Location County State Latitude N Longitude W					

23

The convention calls for frequency lists to show four digits after the decimal place, followed by either an "N" or a "W", depending on whether the frequency is narrow or wide band. Mode refers to either "A" or "D" indicating analog or digital (e.g. Project 25) or "M" indicating mixed mode. All channels are shown as if programmed in a control station, mobile or portable radio. Repeater and base stations must be programmed with the Rx and Tx reversed.

MEDICAL PLAN	1. INCIDENT NAME SHU Lightning	2. DATE PREPARED 8/11/2009	3. TIME PREPARED 1645	4. OPERATIONAL PERIOD 8/12/09-8/13/09 0700-0700
---------------------	-----------------------------------	-------------------------------	--------------------------	---

5. INCIDENT MEDICAL AID STATION

MEDICAL AID STATIONS	LOCATION	PARAMEDICS	
		YES	NO
Incident Base MERT	27571 Mountain View Rd., Burney, CA (Burney High School)	<input checked="" type="checkbox"/>	<input type="checkbox"/>
CAL FIRE Personnel	On engines and at CAL FIRE stations.	<input type="checkbox"/>	<input checked="" type="checkbox"/>
CAL-MAT	Incident Base	<input checked="" type="checkbox"/>	<input type="checkbox"/>
		<input type="checkbox"/>	<input type="checkbox"/>
		<input type="checkbox"/>	<input type="checkbox"/>

6. TRANSPORTATION

A. AMBULANCE SERVICES

NAME	ADDRESS	PHONE	PARAMEDICS	
			YES	NO
Redding ECC	Contact Redding ECC for all air or ground transport	530-225-2411	<input checked="" type="checkbox"/>	<input type="checkbox"/>
Burney Ambulance	Burney, CA (contact SHU ECC)	530-225-2411	<input checked="" type="checkbox"/>	<input type="checkbox"/>
Mayers Memorial Hospital	43563 HWY 299. Mc Arthur, CA	530-336-5511	<input checked="" type="checkbox"/>	<input type="checkbox"/>
			<input type="checkbox"/>	<input type="checkbox"/>
			<input type="checkbox"/>	<input type="checkbox"/>

B. INCIDENT AMBULANCES

NAME	LOCATION	PARAMEDICS	
		YES	NO
	N/A	<input type="checkbox"/>	<input type="checkbox"/>
		<input type="checkbox"/>	<input type="checkbox"/>
		<input type="checkbox"/>	<input type="checkbox"/>
		<input type="checkbox"/>	<input type="checkbox"/>

7. HOSPITALS

NAME	ADDRESS	TRAVEL TIME		PHONE	HELIPAD		BURN CENTER	
		AIR	GRND		YES	NO	YES	NO
		Mercy Medical Center	2175 Rosaline Ave Redding CA 96001		15-30min	1-2 hours	530-225-6000	X
Shasta Regional Hospital	1100 Butte St., Redding, CA	15-30min	1-2 hours	530-244-5353	X	<input type="checkbox"/>	<input type="checkbox"/>	X
UC Davis	2315 Stockton Blvd., Sacramento, CA	1.5 hours	2.5-3 hours	(916) 734-2130	X	<input type="checkbox"/>	X	
Mayers Memorial	43563 HWY 299. Mc Arthur, CA	15-30min	.5 - 1.5 hours	530-336-5511	X	<input type="checkbox"/>	<input type="checkbox"/>	X
		<input type="checkbox"/>	<input type="checkbox"/>		<input type="checkbox"/>	<input type="checkbox"/>	<input type="checkbox"/>	<input type="checkbox"/>

8. MEDICAL EMERGENCY PROCEDURES

Immediately report all injuries to your immediate supervisor.
Any injury requiring greater care than first aid needs to be reported to your Division/Group Supervisor on Command net
Supervisors be prepared to request needs including:
-Air or Ground Transportation
-Location to meet injured person / any special routing / GPS coordinates if available
-Type of injury
Division/Groups will coordinate transportation or additional needs
Notify Safety Officer for all significant injuries
More significant events (ie major injuries or deaths, burn over, missing persons) require immediate IC & PIO notification
All Air Ambulance LZ coordination will be conducted on CalCord.
Any Short Haul procedure will be with Copter 101 coordinated through your Division/Group Supervisor.
Minor injuries to be brought into base camp Medical Tent.

9. PREPARED BY (MEDICAL UNIT LEADER) Med Unit Leader Jeff Vanatta	10. REVIEWED BY (SAFETY OFFICER) Brent Stangeland
--	--

**CONTRACTOR/VENDOR PERFORMANCE EVALUATION
ICS 230 (09-2001)**

1. INCIDENT NAME	2. ORDER NUMBER	3. REQUEST NUMBER	4. START DATE	END DATE
			TO	
5. SHIFT/OPERATIONAL PERIOD		6. OPERATOR	7. ASSIGNMENT OR LOCATION	

CONTRACTOR/VENDOR INFORMATION

8. NAME	9. ADDRESS	10. PHONE AND CONTACT
11. SERVICE <input type="checkbox"/> COMMODITY <input type="checkbox"/> RENTAL EQUIPMENT		12. AGREEMENT #
13. BRIEF DESCRIPTION OF SERVICES/COMMODITY/EQUIPMENT ORDERED:		

14. RATING FACTORS	YES	NO		
1) Gave and met acceptable ETA/commitment.	<input type="checkbox"/>	<input type="checkbox"/>		
2) Arrived prepared, equipped and ready to work.	<input type="checkbox"/>	<input type="checkbox"/>		
3) Met with assigned supervisor for direction.	<input type="checkbox"/>	<input type="checkbox"/>		
4) Met performance expectations.	<input type="checkbox"/>	<input type="checkbox"/>		
5) Equipment in safe working condition.	<input type="checkbox"/>	<input type="checkbox"/>		
6) Personnel were skilled and operated safely.	<input type="checkbox"/>	<input type="checkbox"/>		
7) Personnel's level of cooperation was acceptable.	<input type="checkbox"/>	<input type="checkbox"/>		
8) Other:	<input type="checkbox"/>	<input type="checkbox"/>		
OVERALL RATING OF PERFORMANCE	POOR* <input type="checkbox"/>	AVG. <input type="checkbox"/>	GOOD <input type="checkbox"/>	EXC. <input type="checkbox"/>
RECOMMENDATION FOR REHIRE/REUSE:	YES <input type="checkbox"/>	NO <input type="checkbox"/>	** <input type="checkbox"/>	

* Any rating of poor **REQUIRES** explanation or comment.
 ** Any rating of No Reuse Recommended **REQUIRES** comment and Logistics Chief concurrence.

15. COMMENTS:

SIGNATURE BELOW DOES NOT CONSTITUTE AGREEMENT WITH RATING, BUT THAT RATING WAS DISCUSSED WITH CONTRACTOR/VENDOR OR REPRESENTATIVE.

16. CONTRACTOR/VENDOR REP. NAME/TITLE		17. GOVERNMENT REP. NAME/POSITION	
18. SIGNATURE	19. DATE	20. SIGNATURE	21. DATE

NOTE: Equipment safety/compliance inspections still required, please document separately.
 Distribution: Original, Incident Package, copy, Administrative Unit, Copy, Contractor/Vendor

FUEL REPAIR

299 E

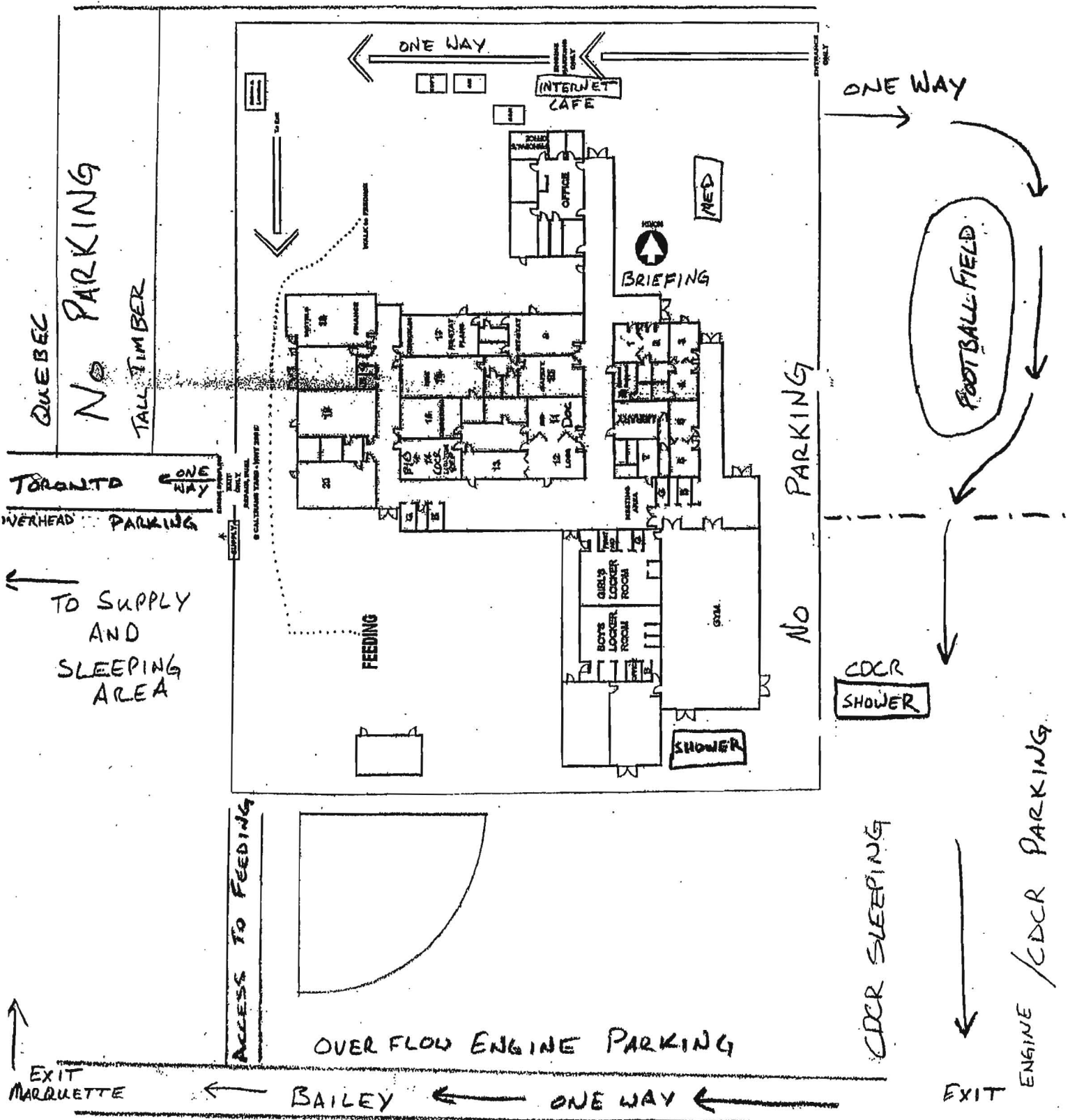
SHU LIGHTNING
CA-SHU-005594

FACILITIES MAP

Map not to scale

PARKING

MT. VIEW



NO PARKING

TALL TIMBER

QUEBEC

TORONTO WEARHEAD PARKING

TO SUPPLY AND SLEEPING AREA

EXIT MARQUETTE

ACCESS TO FEEDING

OVER FLOW ENGINE PARKING

BAILEY ONE WAY

NO PARKING

CDCR SHOWER

CDCR SLEEPING

ENGINE / CDCR PARKING

EXIT

FOOTBALL FIELD

ONE WAY

ONE WAY

INTERNET CAFE

OFFICE

MED

BRIEFING

FEEDING

SHOWER

BOYS LOCKER ROOM

GIRLS LOCKER ROOM

GSTM

PIG

LOCK

PLANK

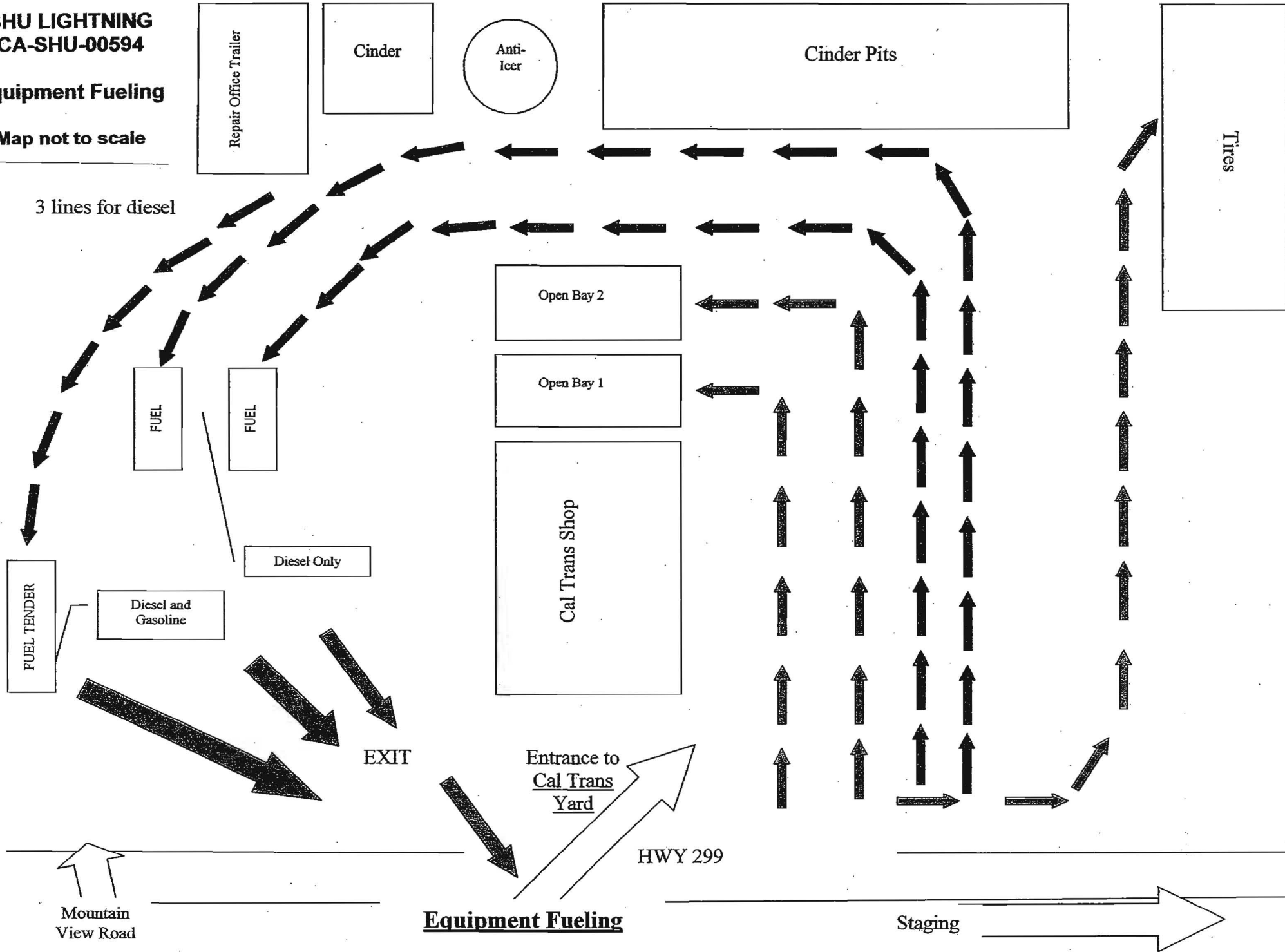
DOC

MAGAZINE

SHU LIGHTNING
CA-SHU-00594

Equipment Fueling

Map not to scale



3 lines for diesel

FUEL

FUEL

Diesel Only

Diesel and Gasoline

FUEL TENDER

EXIT

Entrance to
Cal Trans
Yard

HWY 299

Equipment Fueling

Staging

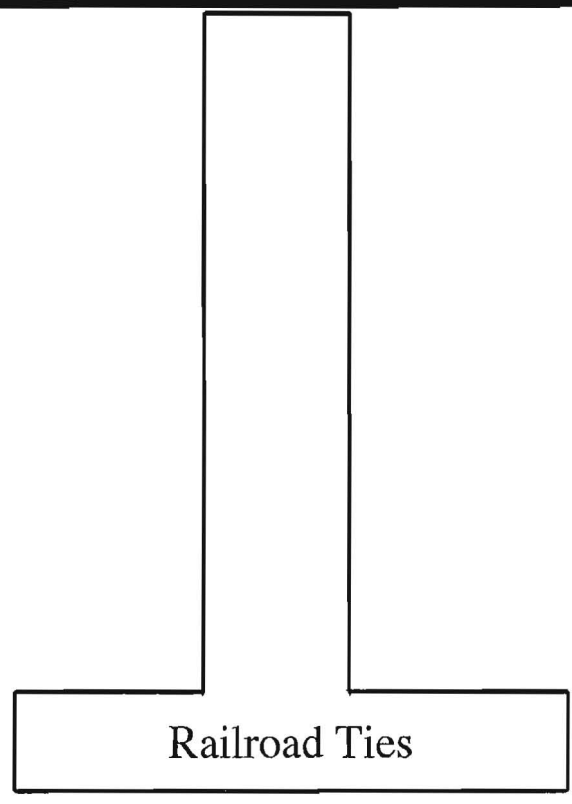
Mountain
View Road

Tires

Ranch Staging for Demob

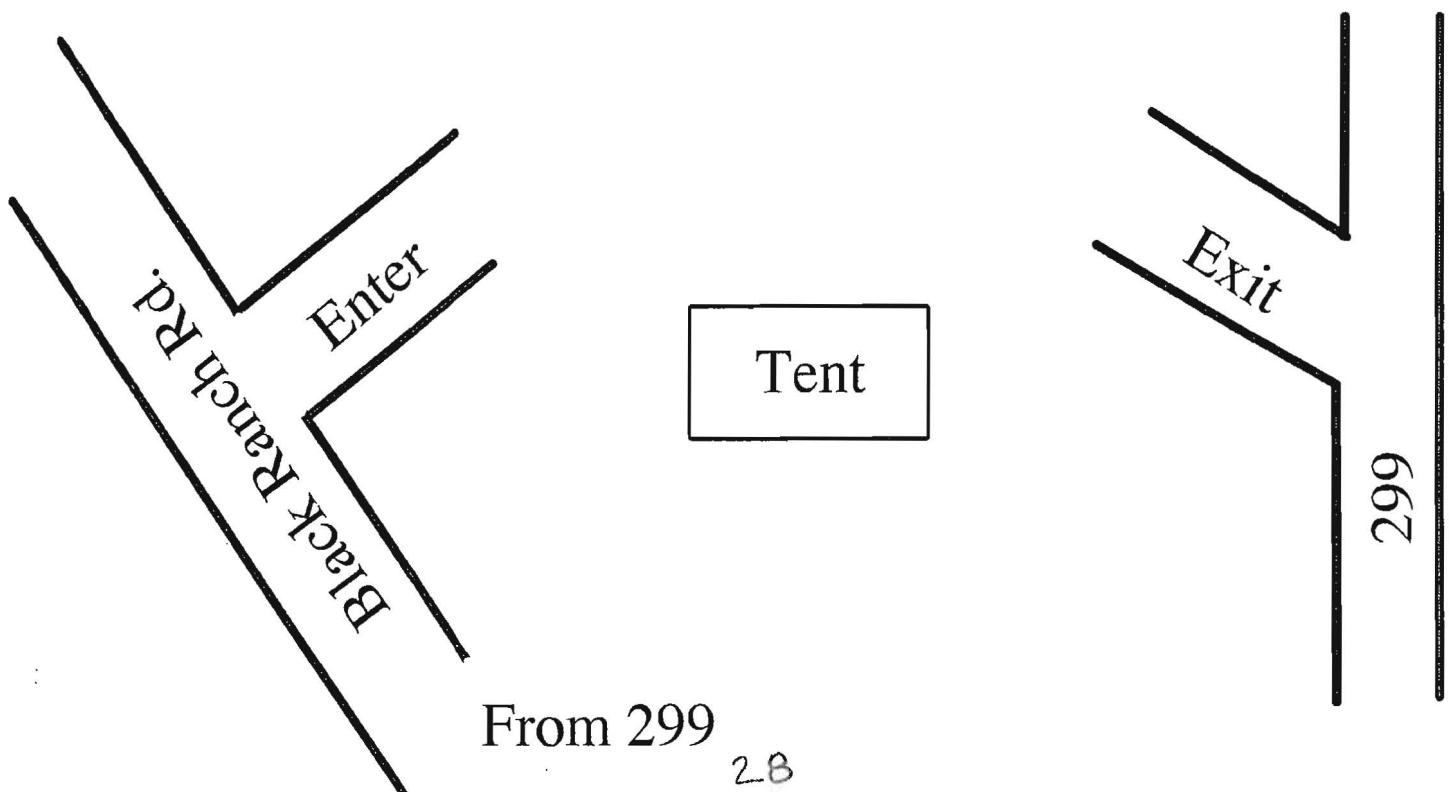
Dozers

Engines



Railroad Ties

Crews



Black Ranch Rd.

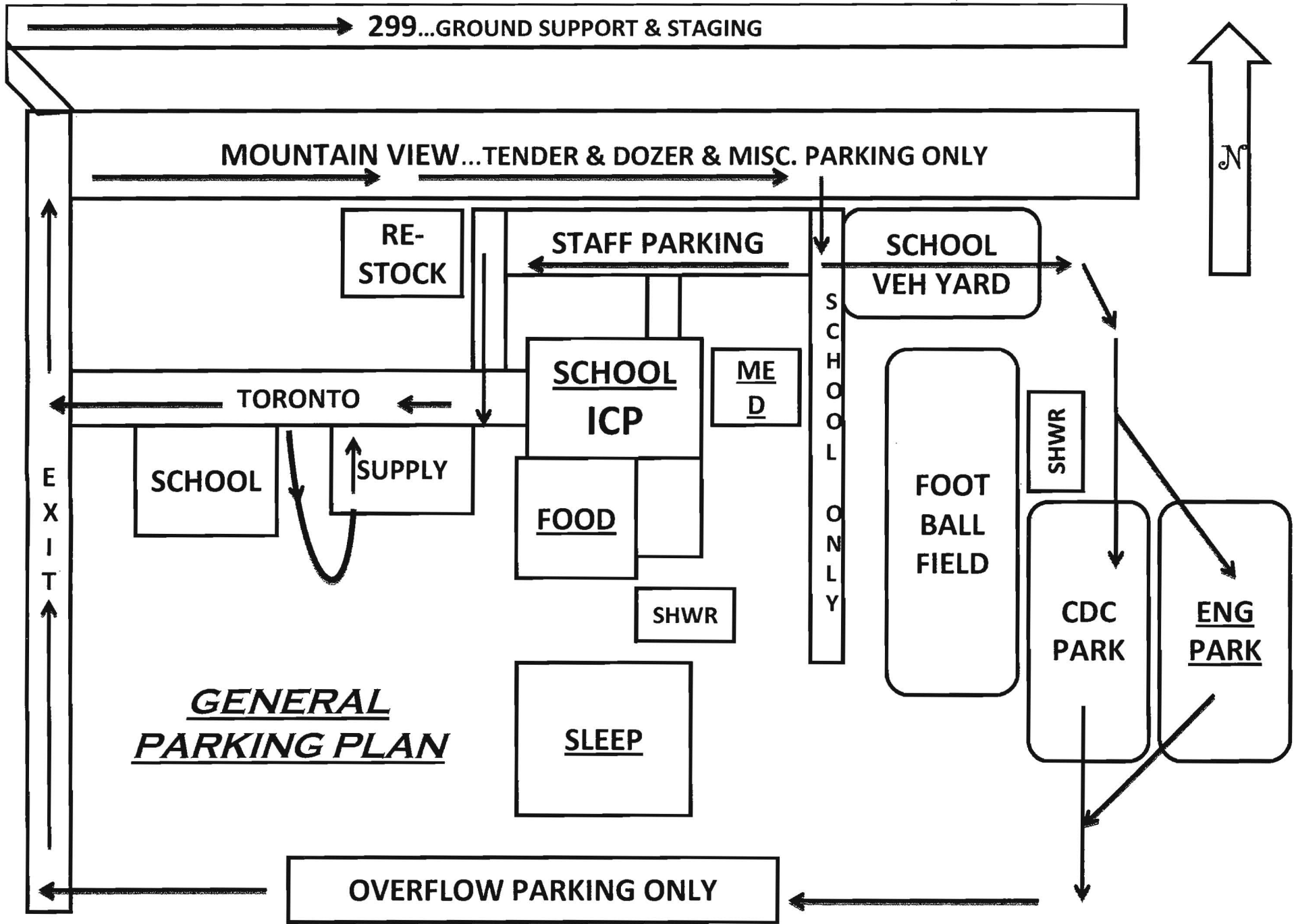
Enter

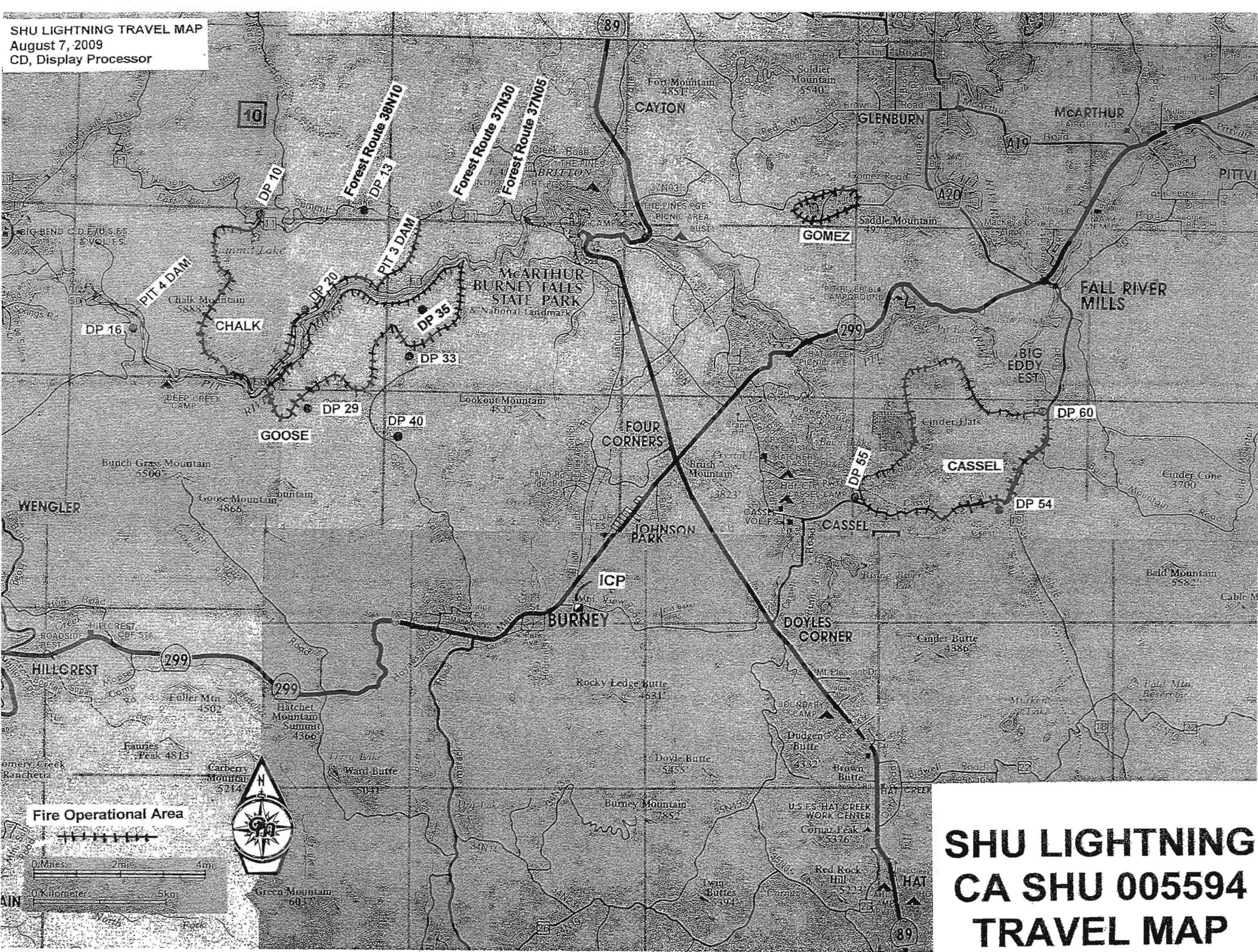
Tent

Exit

From 299

299





SHU LIGHTNING CA SHU 005594 TRAVEL MAP

TRAINEES

SEE THE TRAINING SPECIALIST

(LOCATED IN PLANS - NEXT TO CHECK-IN)

START THE PROCESS OR UPDATE THE PROGRESS.

STOP BY PERIODICALLY SO I CAN TRACK YOUR TASK BOOK

MARK MCKEY TRAINING SPECIALIST ICT 1

We Are Recycling!

- Paper
- Cans
- Plastic Bottles
- Cardboard
- Batteries

Please separate all trash from recyclables and place in black garbage bags.
Pick up bags at lunch trailer.

Drop off points located next to dumpsters at:

- Supply
- Sleeping Areas

Battery Recycling next to supply tent and
Communication trailer.

Archaeological Guidelines for the Shasta Lightning Complex Shasta County, CA

1. Sites known by the archaeologist will be marked with red plastic flagging tape.
2. Be on the lookout for unmarked prehistoric archaeological sites. These sites may include village sites that include dark midden soils and circular housepit depressions; seasonal camps marked by the presence of shiny black obsidian flakes and/or white-colored freshwater mussel shells; and hunting camps containing obsidian and basalt flakes.
3. Be on the lookout for unmarked historic archaeological sites. These sites may include old cabins and homesteads now marked by the presence of foundations, wells, and can dumps. Also present is early infrastructure related to the PG&E hydro-electric system.
4. Look for these unmarked prehistoric and historic sites in flat areas, especially adjacent to the Pit River, streams, and springs.
5. Avoid ground disturbing activities within archaeological sites where possible. If you can't avoid, minimize ground disturbance as much as possible, only clearing the surface to as minimal a depth as necessary. Try to go around sites with dozers rather than through them. Flag the site for continued avoidance during Fire Suppression Repair activities.
6. If you find artifacts leave them in place. Some artifacts may have been intentionally placed for religious or ceremonial reasons.
7. If possible, note locations of discovered artifacts, features, and/or sites on a map. Better yet take a GPS reading. Leave information for the archaeologist with the Plans Unit.
8. **While protection of non-renewable cultural resources is important, firefighter safety is even more important. Protect archaeological sites where you can but do not jeopardize firefighter safety or risk losing control of the incident when site protection is considered.**

Thanks for your help protecting California's cultural heritage.

Richard Jenkins
CAL FIRE Northern Region Archaeologist
Redding

Fire Suppression Repair

Roads

- Install waterbreaks where a waterbreak previously existed.
- Install new waterbreaks where needed
- Install or maintain a rolling dips where a rolling dip previously existed.
- Re-establish existing berms where applicable.
- Breach berms to facilitate drainage, where applicable.
- Clean culverts plugged with soil and rock resulting from fire road use.
- Remove all slash and debris from culvert inlets/outlets.
- Clean and grade ditch lines and lead off ditches.
- Water roads for dust abatement.

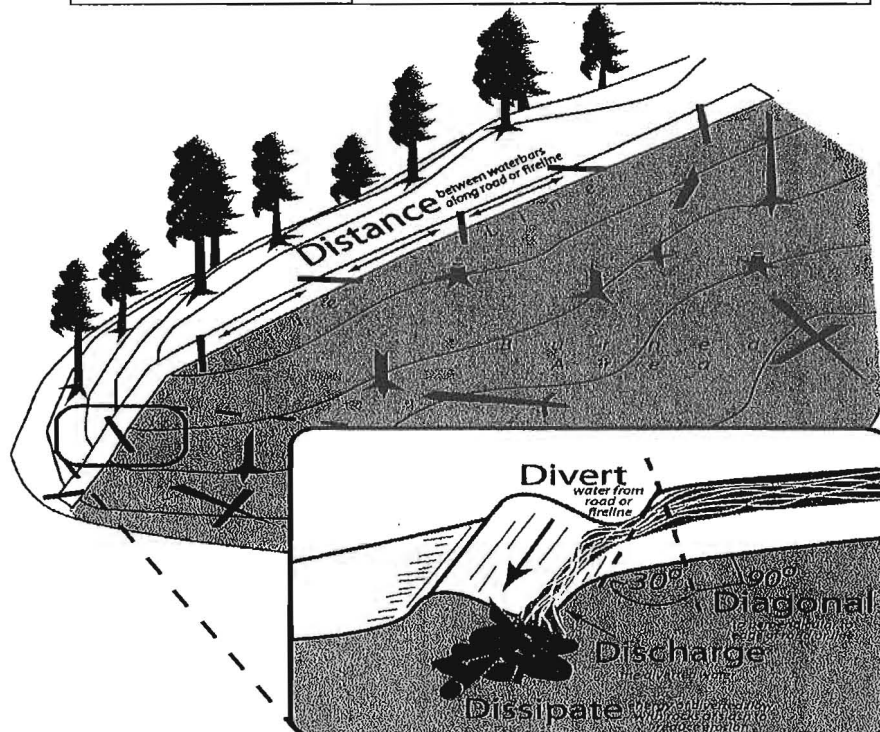
Hand Lines and Dozer Lines

- Install waterbars as described in the guidelines below. Waterbars are designed to intercept, slow and spread the precipitation run-off in order to reduce sediment transport and soil erosion. The idea is to move water off the fireline before it can build up enough energy to erode and transport sediment.

Waterbar Guidelines:

These spacing distances should be used as a *guide*. Judgment should be used in locating waterbars to minimize erosion potential. It may not be possible or necessary to place waterbars in steep or rocky areas. Install waterbars at the following recommended *minimum* intervals:

Fireline Gradient (% slope)	Minimum Distance Between Water-Bars (feet)
0 to 10	200
11 to 25	100
25+	50



DEMobilIZATION PLAN - summarized
SHU Lightning INCIDENT

I. RELEASE PRIORITIES

The following Release Priorities have been established by the Incident Commander in concert with the Redding ECC.

1. Local Government (other operational areas)
2. Out of state resources
3. Cooperating Agencies
4. Federal Resources
5. Contract and private resource
6. CAL FIRE resources (prioritized by distance and travel time)

III. GENERAL GUIDELINES

- A. **NO RESOURCES WILL LEAVE UNTIL AUTHORIZED BY THE DEMOB UNIT.**
- B. Efforts will be made to ensure that all released personnel arrive home by 2200.
- C. Prior to leaving the Incident the Demob Unit will brief all Supervisors and Strike Team Leaders.
- D. Notification to incident personnel will be by posting surplus releases in advance.
- E. Actual departure times and ETA at destination will be relayed to Expanded Dispatch at time of departure.
- F. All Trainees will see the Training Tech Specialist prior to departure.
- G. Maximum driving duration for federal resources will not exceed 10 hours/person/day.

IV. RESPONSIBILITIES

Unit Leaders will declare resources excess to their Section Chief. Section Chiefs will declare *excess* resources to the Demob Unit. Include the date and time the resources will be surplus, their position on the incident and any transportation needs. **Use the General Message Form (ICS-213) or Team release form to list all surplus resources. Send to the RESSOURCE UNIT.

V. RELEASE PROCEDURES

- A. **Functional Heads** (i.e. Section Chiefs and Unit leaders) are responsible for determining resources "Excess" to their needs and submitting the list to the Planning Section. This must be done 24 hours in advance of anticipated release in order to Notify North Ops of planned demobilization and to allow a proactive approach to reassignments or releases to the home units. The lists will provide the following information about the resource:
 1. Order/Request number
 2. Resource name or designator
 3. ETD
 4. Travel time (including rest and meals if necessary)
 5. Destination
 6. Availability for reassignment (if not available, provide valid reason)
 7. If flying, nearest Jetport and Social Security Number
- B. **RESL** will determine if there is a need at the incident that the Excess resource can fill. If no incident reassignments are necessary, the resource will be declared "Surplus" to the incident.
- C. **DMOB** will combine the approved surplus resource lists to create "Pending" resource lists to be submitted to the forest or agency dispatch for confirmation. DMOB will work with the resources and supply units so that the resource status board and resource orders can be kept up to date.
- D. When a resource status has been **confirmed** by dispatch and NOPS, DMOB will notify the resource so that check-out may begin.
- E. The Crew Leader or individual will take the Demobilization Check-out form to:
 - COML (to confirm that radio equipment is returned)
 - SUPL (to confirm all non-expendable property is returned)
 - GSUL (to inspect, clean and repair vehicles)
 - TIML (to confirm all time reporting documents are complete)
 - DOCL (to hand in logs or ratings)
- F. DMOB will be the last stop in the press release process and:
 - Sign-off, note date and time on the ICS-221
 - Note any revisions to the ETD or ETA
 - Collect the ICS-221
- G. Resource is **released** and free to leave the incident.

SHASTA COMPLEX PHONE PLAN

		FAX	OFFICE
I.C.			335-3428
SAFETY			707-889-4215
LIASON			335-3373
INFO		335-3372	335-3372
CDC A. REP			335-3415
OPERATIONS			335-3408
			335-3377
PLANS			335-4084
LOGISTICS			335-3405
FINANCE		335-3382	335-3424motel
			335-3423ppts
COMMUNICATIONS			335-3402
			335-5203
ORDERING		335-3388	335-3413
			335-3411
FIRE INFO SHU OFFICE			225-2510
RESOURCE UNIT			335-4084
INCINET/CHECK-IN/DEMOB/TRAINING		335-4106	
NORTH TREE OFFICE		335-4152	
NORTH TREE GIS			335-4132
CHECK-IN			335-3386
			335-3433
STAGING-----JERROD KOOS			831-251-6374
BURNEY LCA			335-2203
REPAIR			335-5542
Danny Sykes			448-2430
SCSO non emergency dispatch			245-6540
SCSO Anthony Bertain			921-3117
RADIO TECH			335-4142
COM UNIT LEADER			335-4104
HELIBASE DESK			530-336-6280
HELIBASE FINANCE			530-336-6123
OTHER IMPORTANT PHONE NUMBERS			
DAN TINNEL	OES REP		530-941-0095
WILL DARNALL	FSC		530-200-2504
HARPER KEENE	PUL		530-276-4687
TOM CRESPIAN	TUL		530-200-6097
STEVE WEIR	GSUL		707-391-6732
SEAN	COST		530-200-2514
PATTI ROYER	PPTS		916-838-0843
KIM RONGEY	PURC		916-316-7352
JAN NEWTON	PURC		916-804-2113
KATHLEEN HIE	PURC		707-287-6718
PAUL ABE	ETR		916-799-8528
SKIP SANNERS	COMP		530-966-0350
CHRIS RAMEY	PTRC		707-599-6439
LARAMIE GRIFFITH	CCC A. REP		530-227-1024
ARIK BORD	ELITE SECURITY		530-598-6498
ROGER CUMMINGS	ELITE SECURITY		530-605-5904
ELITE SECURITY	DISP		888-948-4774
			530-242-8957

DIVISION / GROUP SUPERVISOR OPERATIONAL PERIOD - DEBRIEFING FORM

Incident Name: _____ Operational Period: _____

Branch: _____ Division/Group: _____ Div/Grp Supervisor Name: _____
 Cell #: _____ Vehicle Radio #: _____

Weather:
 Time: _____ Temp: _____ Humidity: _____ Fire Behav.: _____
 Wind: _____ Fuels: _____ Topog: _____ Natural Barriers: _____

Today

General Remarks / Accomplishments / Problem Areas:

Spot Fires: _____

Safety Concerns: _____

Water Sources: _____

Drop Points: _____

Division Breaks: _____

Helispots: _____

Values at Risk: _____

ACCOUNTABILITY		AGENCY Resources Committed to Division / Group					
Overhead	ENG	ENG S/T	CRW	CRW S/T	DOZ	DOZ S/T	Other

ACCOUNTABILITY		PRIVATE Resources Committed to Division / Group				
Kind	Req. #	Owner / ID	Operator	2nd Oper?	Type/Size	Remarks

Reminder: Complete Vendor Shift Tickets and Vendor Evaluations

Planning for Next Operational Period

Next Operational Period: _____ thru _____ Division / Group: _____

Division / Group RESOURCES NEEDED for Next Operational Period

Engines (Type/#)		Crews (Type/#)		Dozers	Water Tenders	Tankers	Copters	Other Equipment	Overhead
<i>S/T</i>	<i>SR</i>	<i>S/T</i>	<i>SR</i>	<i>Type/#</i>	<i>Type/#</i>	<i>Type/#</i>	<i>Type/#</i>	<i>Kind/#</i>	<i>Kind/#</i>

Division / Group Assignments – Special Needs Next Operational Period

Tomorrow

Work Assignments:

Special Needs:

MAP of Current and Expected Conditions

Please Turn in this Form to Planning Section - We have Color Maps

