

YUBA FIRE



CA-NEU-16856

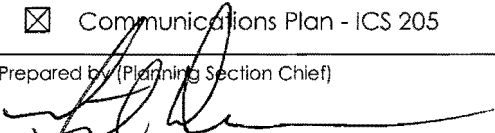
SUNDAY

August 16, 2009

0600 - 0600

ORGANIZATION ASSIGNMENT LIST		
1. Incident Name		
Yuba Fire		
2. Date		3. Time
8/16/09		0000 hrs
4. Operational Period		
8/16/09 0600-0600		
Position	Name	
5. Incident Commander and Staff		
Incident Commander	Robert Lewin / Kevin O'Leary (T)	
Deputy	Kelly Keenan	
Safety Officer	Chris Cox / Walt Holloway (T)	
Information Officer	Nick Schuler / Fernando Herrera / Greg McKeown (T)	
Liaison Officer	Steve Negro / Greg Turner (T)	
6. Agency Representative		
Agency	Name	
CHP	Sgt. Mark Taylor	
Yuba/Nevada S.O.	Shawn Smith/Watch Commander	
USFS, TNF	Mike Cherry	
USFS, PNF	John Estes	
Cal EMA F/R	David Powell	
Yuba County OES	Aaron Ward	
Nevada County OES	Vic Ferrera	
7. Planning Section		
Chief	Bruce Schofield / Mike Despain (T)	
Deputy	Jeff Johnson	
Resources Unit	Matt Conoscente (T) / Andy Murphy (T) / Dave Anderson (T)	
Situation Unit	Buddy Bloxham / Ron Roberts (T) / Jeff Dapper (T)	
Documentation Unit		
Demobilization Unit	Bill Smith / Jeff Adams (T)	
Technical Specialists		
Human Resources		
Training	Paul Melendrez	
Fire Behavior Analyst	Chris Waters	
IMET	Ryan Walbrun	
8. Logistics Section		
Chief	Robert Michael / Geoff Pemberton (T)	
Deputy	Frank Reilly	
Supply Unit	Tim Stewart	
Facilities Unit	Wendy Stuller	
Ground Support Unit	Gary Phillips	
Communications Unit	Scotty Preston / Chet Ashbaugh (T)	
Medical Unit		
Hotel Tech	Milford Ferguson	
Food Unit		

9. Operations Section		
Chief	Brian Estes / Mark Brunton	
Deputy	Justin McGough	
Staging	Lake Francis Staging	
Staging	Bridgeport Staging	
a. Branch I - Division/Groups		
Branch Director	Bryan Vanden Bossche	
Deputy		
Division/Group	Div A/B	TBA
Division/Group	Div Z	TBA
Division/Group		
Division/Group		
Division/Group		
Division/Group		
b. Branch II - Division/Groups		
Branch Director	TBA	
Deputy		
Division/Group	Div C	TBA
Division/Group	Div D	TBA
Division/Group		
Division/Group		
Division/Group		
Division/Group		
c. Branch III - Division/Groups		
Branch Director	Jeff Ohs	
Deputy		
Division/Group	Div L	TBA
Division/Group	Div M	TBA
Division/Group		
Division/Group		
Division/Group		
d. Air Operations Branch		
Air Operations Branch Director	John Richardson	
Air Support Group	Travis Alexander	
Air Support Supervisor		
Helicopter Coordinator	Scott Upton / Randy Rapp	
Helibase Manager	Matt Stanford	
10. Finance Section		
Chief	Roger Raines	
Deputy		
Time Unit	Andrew Lorpuz / Richard Bruning (T)	
Procurement Unit		
Compensation/Claims Unit	Laura Germany	
Cost Unit	Terry Eastwood / Mara Zaver (T)	
Prepared by (Resource Unit Leader)		

<p align="center">INCIDENT OBJECTIVES</p>	<p>1. Incident Name Yuba Fire</p>	<p>2. Date 8/16/09</p>	<p>3. Time 0000 hrs</p>									
<p>4. Operational Period 8/16/09 – 0600 to 0600</p>												
<p>5. General Control Objectives for the Incident (include alternatives)</p> <p>Management Objectives:</p> <ol style="list-style-type: none"> 1. Provide for the health and safety of the firefighters and the public. 2. Minimize damage to improvements and the environment. 3. Keep costs commensurate with values at risk. <p>Control Objectives:</p> <ul style="list-style-type: none"> • Keep the fire North of San Juan Ridge • Keep the fire South of Marysville Road • Keep the fire East of Rice's Crossing Road • Keep the fire West of Bullards Bar 												
<p>6. Weather Forecast for Period See attached Spot Weather Forecast</p>												
<p>7. General Safety Message See attached Safety Message</p>												
<p>8. Attachments (mark if attached)</p>												
<table border="0"> <tr> <td><input checked="" type="checkbox"/> Organization List - ICS 203</td> <td><input checked="" type="checkbox"/> Medical Plan - ICS 206</td> <td><input checked="" type="checkbox"/> Weather Forecast</td> </tr> <tr> <td><input checked="" type="checkbox"/> Div. Assignment Lists - ICS 204</td> <td><input checked="" type="checkbox"/> Incident Map</td> <td><input checked="" type="checkbox"/> Fire Behavior Forecast</td> </tr> <tr> <td><input checked="" type="checkbox"/> Communications Plan - ICS 205</td> <td><input type="checkbox"/> Traffic Plan</td> <td><input checked="" type="checkbox"/> Air Ops Summary</td> </tr> </table>				<input checked="" type="checkbox"/> Organization List - ICS 203	<input checked="" type="checkbox"/> Medical Plan - ICS 206	<input checked="" type="checkbox"/> Weather Forecast	<input checked="" type="checkbox"/> Div. Assignment Lists - ICS 204	<input checked="" type="checkbox"/> Incident Map	<input checked="" type="checkbox"/> Fire Behavior Forecast	<input checked="" type="checkbox"/> Communications Plan - ICS 205	<input type="checkbox"/> Traffic Plan	<input checked="" type="checkbox"/> Air Ops Summary
<input checked="" type="checkbox"/> Organization List - ICS 203	<input checked="" type="checkbox"/> Medical Plan - ICS 206	<input checked="" type="checkbox"/> Weather Forecast										
<input checked="" type="checkbox"/> Div. Assignment Lists - ICS 204	<input checked="" type="checkbox"/> Incident Map	<input checked="" type="checkbox"/> Fire Behavior Forecast										
<input checked="" type="checkbox"/> Communications Plan - ICS 205	<input type="checkbox"/> Traffic Plan	<input checked="" type="checkbox"/> Air Ops Summary										
<p>9. Prepared by (Planning Section Chief)</p> 		<p>10. Approved by (Incident Commander)</p>										

Yuba Fire Safety Message

August 16, 2009

Major Hazards and Risks:

WEATHER!!!! Be aware of changing conditions and erratic winds. Review the weather forecast.

ALWAYS watch for SNAGS. Avoid them, flag them and report them so we can get them mitigated.

Driving Safety: Watch speeds on roads, there are tight turns, narrow roads and civilian traffic.

FATIGUE, DEHYDRATION AND HEAT EXHAUSTION!!! Get plenty of rest, watch for fatigue and mitigate, and follow proper hydration procedures.

Key Points:

Poison Oak is abundant in the drainages. Watch for snakes, bees, and ticks.

Stump holes with hot ash can be found in all areas of the fire.

Mine Shafts may be found in all areas of the fire.

ELECTRICAL SAFETY: Watch out for power lines, treat them all as live.

The Ten Standard Orders are FIRM. There is no compromise.

Every Crew: conduct **AND** document your tailgate safety message.

Establish and Maintain your LCES.

Each element needs to be established **AND** maintained throughout the shift, if LCES is compromised, mitigate it.

LCES Topic of the Day:

C

Do you have the comm plan loaded?
Does it work in your radio?

Are you in communication with your supervisor, your crew and adjoining resources?

Watchout topic of the day: #15

Wind Increases and/or Changes
Direction

Are you aware of the predicted wind changes. Have you planned your actions accordingly? Are you watching for signs of wind change?

SAFETY ALERT

HEAT RELATED ILLNESS

HEAT RELATED ILLNESS IS PREVENTABLE!!!!

All personnel shall follow established guidelines.

Heat-induced illness is a result of the body's inability to cope with heat. This can be a minor symptom or a serious life-threatening injury. While recognition and treatment are important, prevention is the key.

Becoming acclimated to working in a hot environment takes time.

- It normally takes 4-8 days to acclimate
- Fatigue and alcohol consumption delays this process
- Persons not acclimated are at increased risk and can suffer heat-related illness at lower levels of heat and work activity

Personnel need to pre-hydrate before work and continuously hydrate during work.

- Water is the primary form of fluid replacement
- Before work, it is recommended to drink 20 ounces of sports drink
- During work drink 8 ounces of water every 15 minutes (1 Quart/hour)
- Cool / cold water is preferred
- Consider a carbohydrate / electrolyte sports drink as a portion (25%-50%) of the fluid intake

Avoid Hyponatremia

- Hyponatremia develops when the concentration of sodium is diluted in the bloodstream
- Exercise-induced hyponatremia occurs when this phenomenon is caused by excess water intake during exercise or work
- Proper nutrition and consumption of carbohydrate/electrolyte sports drinks as part of hydration will assist in avoiding hyponatremia
- Symptoms can include disorientation, headache, muscle cramps and nausea

Take Frequent Rest Breaks

- Hydrate during the rest break
- Create improvised shade, get out of the sun
- Document your rest breaks

Avoid Certain Drinks

- To help prevent dehydration, **AVOID** carbonated beverages and performance beverages such as Red Bull, Rock Star, Monster Drinks, etc.
- Caffeine hastens fluid loss in the urine.

INCIDENT ACTION PLAN SAFETY ANALYSIS											Incident Name Yuba Fire		Date: 8/16/09		Time: 0600-0600				
LCES Analysis of Tactical Applications																			
Division	Indirect Fireline	Downhill Fireline	Underslung Fireline	Mid-Slope Fireline	Frontal Assault	Anchor Points	Extreme Conditions	Reburn Potential	Snags	Steep Terrain	Road Stability	LCES Mitigations	Predicted Wind Event	Transportation +1 hour	Communications	Structure Protection	Traffic on Roads	Power Lines	Other Risk Mitigations
A	X	X		X			X	X	X	X		Use downhill line construction guidelines		X	X	X	X	X	Take adequate rest breaks and hydrate
B	X	X		X			X	X	X	X		Post Lookouts		X	X	X	X	X	Watch for traffic issues while driving
C	X	X		X			X	X	X	X		Ensure you have an escape route to a good safety zone		X	X		X	X	Make sure your communications is well established
D	X	X		X			X	X	X	X		Watch for weather changes		X	X		X	X	Avoid all powerlines
L	X	X		X			X	X	X	X		Flag, avoid, and report snags		X	X		X	X	
M	X	X		X			X	X	X	X				X	X		X	X	
Z	X	X		X			X	X	X	X				X	X	X	X	X	

Prepared by: Chris Cox, SOF1, ICT #10

ICS 215A

Spot Forecast for Yuba Incident Fire
National Weather Service Sacramento
1100 PM PDT Sat Aug 15 2009

IF CONDITIONS BECOME UNREPRESENTATIVE,
CONTACT THE NATIONAL WEATHER SERVICE.

SPOT FORECAST FOR YUBA INCIDENT...NEVADA/YUBA/PLACER UNIT
NATIONAL WEATHER SERVICE SACRAMENTO CA
1100 PM PDT SAT AUG 15 2009

FORECAST IS BASED ON REQUEST TIME OF 2208 PDT ON AUGUST 15.
IF CONDITIONS BECOME UNREPRESENTATIVE...CONTACT THE NATIONAL WEATHER
SERVICE.

.DISCUSSION...

HIGH PRESSURE WILL BUILD ACROSS THE REGION THE NEXT FEW DAYS
RESULTING IN WARM AND DRY CONDITIONS FOR THE FIRE. LIGHT TO MODERATE
NORTHERLY WIND PATTERN WILL PERSIST THROUGH THE EARLY PART OF THIS
WEEK WITH SURFACE WINDS GENERALLY NORTHEASTERLY DURING THE NIGHT AND
MORNING HOURS TRANSITIONING TO NORTHWEST BY LATE MORNING AND
CONTINUING DURING THE AFTERNOONS. STRONGEST GUSTS EXPECTED RIDGETOPS
AND CANYONS DURING THE EARLY MORNING HOURS AND AGAIN LATE IN THE
AFTERNOONS.

.TODAY...

SKY/WEATHER.....SUNNY.
MAX TEMPERATURE.....94-98.
MIN HUMIDITY.....10-15 PERCENT.
WIND (20 FT).....
SLOPE/VALLEY.....NORTHEAST 2-5 MPH WITH GUSTS 8-10 MPH NEAR
CANYONS IN THE MORNING BECOMING WEST 3-6 MPH
GUSTS TO 8 MPH IN THE AFTERNOON.
RIDGETOP.....NORTHEAST 4-8 MPH GUSTS 12-14 MPH IN THE MORNING
BECOMING WEST NORTHWEST 4-8 MPH GUSTS TO 12 MPH
IN THE AFTERNOON.
CWR.....0 PERCENT.
LAL.....1.
MIXING HEIGHT.....INCREASING TO 10000 FT AGL IN THE AFTERNOON.
INVERSION BREAKING AROUND NOON TO 1300 PDT.
MIXING WINDS.....WEST NORTHWEST 5 MPH.

.TONIGHT...

SKY/WEATHER.....CLEAR.
MIN TEMPERATURE.....65-70.
MAX HUMIDITY.....50-60 PERCENT DRAINAGES AND LOWER SLOPES...25-35
PERCENT MID-SLOPES TO RIDGETOPS.
WIND (20 FT).....
SLOPE/VALLEY.....WEST 2-5 MPH IN THE EARLY EVENING BECOMING
NORTHEAST 2-6 MPH BY LATE EVENING WITH GUSTS
8-10 MPH NEAR CANYONS AFTER MIDNIGHT.
RIDGETOP.....WEST NORTHWEST 3-6 MPH IN THE EARLY EVENING
BECOMING NORTHEAST 4-8 MPH BY LATE EVENING WITH
GUSTS 12-14 MPH AFTER MIDNIGHT.
CWR.....0 PERCENT.
LAL.....1.
MIXING HEIGHT.....DECREASING TO BELOW 1000 FT AGL IN THE EVENING.

STRONG INVERSION DEVELOPING BY 2100 PDT.
MIXING WINDS.....EAST AROUND 5 MPH.

.MONDAY...

SKY/WEATHER.....SUNNY.
MAX TEMPERATURE.....98-102.
MIN HUMIDITY.....AROUND 15 PERCENT.
WIND (20 FT).....

SLOPE/VALLEY.....NORTHEAST 3-6 MPH WITH GUSTS 8-10 MPH NEAR
CANYONS IN THE MORNING BECOMING WEST 2-5 MPH
GUSTS TO 8 MPH IN THE AFTERNOON.

RIDGETOP.....NORTHEAST 4-8 MPH GUSTS 12-14 MPH IN THE EARLY
MORNING BECOMING WEST NORTHWEST 3-6 MPH GUSTS TO
10 MPH IN THE AFTERNOON.

CWR.....0 PERCENT.

LAL.....1.

MIXING HEIGHT.....INCREASING TO 10000 FT AGL IN THE AFTERNOON.
INVERSION BREAKING AROUND NOON TO 1300 PDT.

MIXING WINDS.....BECOMING WEST AROUND 5 MPH.

FORECASTER...DFR

REQUESTED BY...CHRIS WATERS

REASON FOR REQUEST...WILDFIRE

FIRE BEHAVIOR FORECAST

FORECAST NO: 01

NAME OF FIRE: Yuba Incident CA-NEU-16856

PREDICTION FOR: 08/16/2009

TIME AND DATE

OF FORECAST: 8/16/2009 0130 hrs

SIGNED: 

Chris Waters, FBAN

WEATHER SUMMARY

See attached Spot Weather Forecast. Maximum Temperature 94-98 Degrees. Minimum RH 10-15%. Northeasterly and down canyon winds in the morning and evening hours, switching to northwest the afternoons. Expect hazy conditions in the early morning hours.

FIRE BEHAVIOR

GENERAL:

Transition in the weather starts today. High pressure system will be building over Northern California the next few days bringing higher temperatures and lower relative humidity to the fire. A light to moderate northerly wind pattern is expected to persist through the early part of the week with strongest winds in the morning and late afternoon hours. Thermal belt development is expected overnight bringing poor relative humidity recovery over the higher terrain.


The Yuba River Canyon is an extremely well defined drainage that's in good alignment with the northeasterly winds that are expected over the next several days. Expect occasionally strong and erratic winds to develop along the canyon walls as winds surface. Expect sudden increases in fire behavior as winds develop in the river canyon, especially as the inversion clears off in the late morning hours.

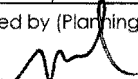
Keep in mind that dead fuels in all size categories are fully available. Live fuels on the other hand are in better condition than in previous years. Late spring rains allowed vegetation to retain moisture in some cases six weeks longer than last year. The live fuels will still remain available to burn however expect to find incomplete or dirty burn areas. The potential for re-burn through partially or incompletely burned brush fields will be a hazard on this fire.

SAFETY:

Steep terrain brings a multitude of fire behavior hazards to the operation. Hard slope runs like the ones that occurred immediately after the fire started, potential roll outs below control lines, and wind channeling are all conditions that will present substantial risk to line personnel. Monitor the weather, especially the winds, as the day progresses.

Northeasterly winds provide good alignment through the Yuba River Canyon.

DIVISION ASSIGNMENT LIST		1. Branch I		2. Division/Group Division A/B			
3. Incident Name Yuba Fire		4. Operational Period Date: 8/16/09 Time: 0600 to 0600					
5. Operations Personnel							
Operations Chief	Brian Estes / Mark Brunton	Division/Group Supervisor	TBA				
Branch Director	Bryan Vanden Bossche	Air Attack Supervisor No.	John Richardson				
6. Resources Assigned this Period							
Strike Team/Task Force/ Resource Designator	Leader	Number Persons	Trans. Needed	Drop Off PT./Time	Pick Up PT./Time		
S/T XYU ENG 3300C (E-28)	BOB CRISS						
CRW NV-DVT SHOPAI CREW 1 (C-14)	KEN HARNEY	21					
W/T MAY WATER TENDER 238 (E-24)	JEFF FUENTES						
7. Control Operations Mop-up and patrol 200' in from perimeter.							
8. Special Instructions Notify DIVS of any damage assessment needs.							
9. Division/Group Communication Summary							
Function	Frequency	System	Channel	Function	Frequency	System	Channel
Command	Tx: 159.3900 Rx: 151.4600		CDF CMD-7	Logistics			
Tactical Div/Group	151.1600		CDF TAC- 2	Air to Ground	151.220		CDF A/G
Prepared by (Resource Unit Ldr.)		Approved by (Planning Sect. Ch.) 		Date		Time	

DIVISION ASSIGNMENT LIST				1. Branch II		2. Division/Group Division C	
3. Incident Name Yuba Fire				4. Operational Period Date: 8/16/09 Time: 0600 to 0600			
5. Operations Personnel							
Operations Chief		Brian Estes / Mark Brunton		Division/Group Supervisor		TBA	
Branch Director		TBA		Air Attack Supervisor No.		John Richardson	
6. Resources Assigned this Period							
Strike Team/Task Force/ Resource Designator		Leader		Number Persons	Trans. Needed	Drop Off PT./Time	Pick Up PT./Time
S/T ENG 9213C (E-1)							
S/T ENG 9320C (E-19)							
S/T CRW TGU 9256G (C-3)							
DZR NEU DOZER 2340 (E-12)							
DZR NEU DOZER 2342 (E-13)							
W/T NSJ WATER TENDER 6191 (E-25)							
7. Control Operations Construct and improve line.							
8. Special Instructions Notify DIVS of any damage assessment needs.							
9. Division/Group Communication Summary							
Function	Frequency	System	Channel	Function	Frequency	System	Channel
Command	Tx: 159.3900 Rx: 151.4600		CDF CMD-7	Logistics			
Tactical Div/Group	151.1375		V-TAC 11	Air-to-Ground	151.220		CDF A/G
Prepared by (Resource Unit Ldr.)			Approved by (Planning Sect. Ch.) 			Date	
						Time	

DIVISION ASSIGNMENT LIST			1. Branch III			2. Division/Group Division M		
3. Incident Name Yuba Fire			4. Operational Period Date: 8/16/09 Time: 0600 to 0600					
5. Operations Personnel								
Operations Chief		Brian Estes / Mark Brunton		Division/Group Supervisor		TBA		
Branch Director		Jeff Ohs		Air Attack Supervisor No.		John Richardson		
6. Resources Assigned this Period								
Strike Team/Task Force/ Resource Designator	Leader		Number Persons	Trans. Needed	Drop Off PT./Time		Pick Up PT./Time	
T/F Yuba Task Force #2								
ENG CFA 5564								
ENG CFA 5580								
ENG CFA 5560								
ENG CFA 5565								
S/T CRW BDU 9389G (C-4)	STEPHEN VOLMER		40					
S/T DZR TGU 9250L (E-36)								
W/T PVT WATER TENDER #290 (E-4)								
7. Control Operations Construct and improve line.								
8. Special Instructions Notify DIVS of any damage assessment needs.								
9. Division/Group Communication Summary								
Function	Frequency	System	Channel	Function	Frequency	System	Channel	
Command	Tx: 159.3900 Rx: 151.4600		CDF CMD-7	Logistics				
Tactical Div/Group				Air to Ground	151.220		CDF A/G	
Prepared by (Resource Unit Ldr.)			Approved by (Planning Sect. Ch.)			Date		Time

DIVISION ASSIGNMENT LIST		1. Branch I		2. Division/Group Division Z			
3. Incident Name Yuba Fire		4. Operational Period Date: 8/16/09 Time: 0600 to 0600					
5. Operations Personnel							
Operations Chief	Brian Estes / Mark Brunton		Division/Group Supervisor	TBA			
Branch Director	Bryan Vanden Bossche		Air Attack Supervisor No.	John Richardson			
6. Resources Assigned this Period							
Strike Team/Task Force/ Resource Designator	Leader	Number Persons	Trans. Needed	Drop Off PT./Time	Pick Up PT./Time		
S/T XGL 3050C (E-79)	DAVE WELLS						
CRW ENF IRON MOUNTAIN (C-9)*	BRAD STEWART	21					
CRW PVT FERGUSON (C-8)	JOE LABERGE	20					
CRW TMU OC 36 (C-10)*							
DZR PNF DOZER #3 (E-53)*							
W/T FTL WATER TENDER 6591 (E-2)							
W/T CTN WATER TENDER 6390 (E-26)							
7. Control Operations Mop-up and patrol 200' in from perimeter.							
8. Special Instructions Notify DIVS of any damage assessment needs. Asterisk (*) denotes a 12 hour resource							
9. Division/Group Communication Summary							
Function	Frequency	System	Channel	Function	Frequency	System	Channel
Command	Tx: 159.3900 Rx: 151.4600		CDF CMD-7	Logistics			
Tactical Div/Group	151.1600		CDF TAC- 2	Air to Ground	151.220		CDF A/G
Prepared by (Resource Unit Ldr.)		Approved by (Planning Sect. Ch.)			Date		Time

DIVISION ASSIGNMENT LIST		1. Branch OPS		2. Division/Group BRIDGEPORT STAGING			
3. Incident Name Yuba Fire		4. Operational Period Date: 8/16/09 Time: 0600 to 0600					
5. Operations Personnel							
Operations Chief		Brian Estes / Mark Brunton		Division/Group Supervisor			
Branch Director				Air Attack Supervisor No.		John Richardson	
6. Resources Assigned this Period							
Strike Team/Task Force/ Resource Designator		Leader		Number Persons	Trans. Needed	Drop Off PT./Time	Pick Up PT./Time
S/T ENG XNU 4102A (E-27)							
S/T ENG XSJ 4175C (E-20)		NEELY					
ENG LRB ENGINE #61 (E-11)							
ENG PNF ENGINE #31 (E-56)*							
ENG FAIRVIEW ENGINE #572							
7. Control Operations							
8. Special Instructions Asterisk (*) denotes a 12 hour resource							
9. Division/Group Communication Summary							
Function	Frequency	System	Channel	Function	Frequency	System	Channel
Command	Tx: 159.3900 Rx: 151.4600		CDF CMD-7	Logistics			
Tactical Div/Group				Air to Ground	151.220		CDF A/G
Prepared by (Resource Unit Ldr.)		Approved by (Planning Sect. Ch.)			Date		Time

AIR OPERATIONS SUMMARY 220

PREPARED BY: John Richardson

DATE: 8/16/2009

1. INCIDENT NAME: Yuba Fire	2. OPERATIONAL DATE: 08/16/09	SUNRISE: 06:20	SUNSET: 19:56
3. REMARKS Safety Notes: Flight-Hazards, Other Hazards, Air Operations, and Special Equipment, etc.): Powerlines, Frequency management, Diverts, etc. Safety is the #1 concern, get clearance prior to entering a FTA. Vineyard IP: N 39 19.832 W 121 14.046 Order FW/RW Aircraft through Operations to ATGS / HLCO. Sling load orders placed through the Communications Unit no later than 14:00 to ensure delivery. Helibase(s) Name: Brownsville HB (F25) Lat./Long: N 39 27.233 W 121 17.375	4. AIR RESCUE AIRCRAFT: C404 Activation Instructions: Request placed through ATGS		5. TFR/91.137: Radius: 6 NM Altitude: 8,000 MSL Center Point: Latitude: 39 20.31 Longitude: 121 12.13

3a. Water Points: Francis Dip N39 21.74 W121 12.26				3b. Helispots:				
6. PERSONNEL	Name	Telephone	Cellular	Pager	Fax	7. FREQUENCY	AM	FM
AOBD	John Richardson		805-903-3418			AIR TACTICS:		166.2750
ASGS	Travis Alexander		951-575-5513			AIR/AIR RW:	126.075	
						AIR/GROUND:		168.5375
ATGS	John Messina @ CIC	530 891-2911				COMMAND:	CDF CMD 7 Tone 15	
ATGS (Relief)	Kurt Chamberlin @ GOO	530 272-4952				COMMAND RPT:		
HEBM	Matt Stanford		951-545-8205			DECK:		163.1000
HLCO	Scott Upton		707 889-4375			TLOC:	132.675	
HLCO	Randy Rapp		530 200-2512			AIR/AIR Briefing	123.625	
<small>AGENCY AIRCRAFT DISPATCH OFFICE</small>	Grass Valley (Jennifer)	530 477-0641 137						
CIC ATB	ATBM	530 891-2911			530 895-6029			
GOO ATB	ATBM	530 272-4952			530 272-1112			
MCC VLAT ATB	ATS Perri Hall	951 368-4972			916 561-3354			
<small>AGENCY AVIATION MILITARY LIAISON</small>	Frank Podesta @ MHR		949 648-4548		916 843-3931			

8. PERSONNEL ON ORDER: ASGS-HEBM-ATGS-CWN Manager

SEE INCIDENT RADIO COMMUNICATIONS PLAN (205) FOR ALL OTHER FREQUENCIES!

9. FIXED WING:	Identifier	Base	10. ROTOR WING:	Identifier	Base
Air Attack(s): 2	AA210, AA230	210-Chico, 230-Grass Valley	Type		
Leadplane(s):			Helitanker(s):		
Tanker(s): 4			I: 6	5CH, 803,804,820,830,831	Redding Airport / Mt. Gate
I:			II: 3	C404, 5PJ, 7PJ	Benton/Hat Creek / Sugar Pine
II:			III: 2	38SH, 3185A	Benton/Hat Creek / Sugar Pine
III: 4	T88, T89, remainder TBD	Grass Valley	IV:		
VLAT Available upon Request					

11. SPECIAL ASSIGNED EQUIPMENT:
AIRCRAFT RESCUE FIRE FIGHTERS , on site at helibase(s).
 Helibase dust abatement **Water Tender(s)**

12. EQUIPMENT ON ORDER: Crash Rescue, additional water tender

13. TASKS/MISSION ASSIGNMENT (Type/Function includes: Air Tactical, Helicopter Coordinator, Fixed Wing: Retardant, Rotor Wing: Helitanker: Retardant/Foam, Rotor Wing: Retardant and or Foam, Personnel & Cargo Transport, Dip Site Locations and Names, Initial Attack and Air Rescue Helicopters, and Other.

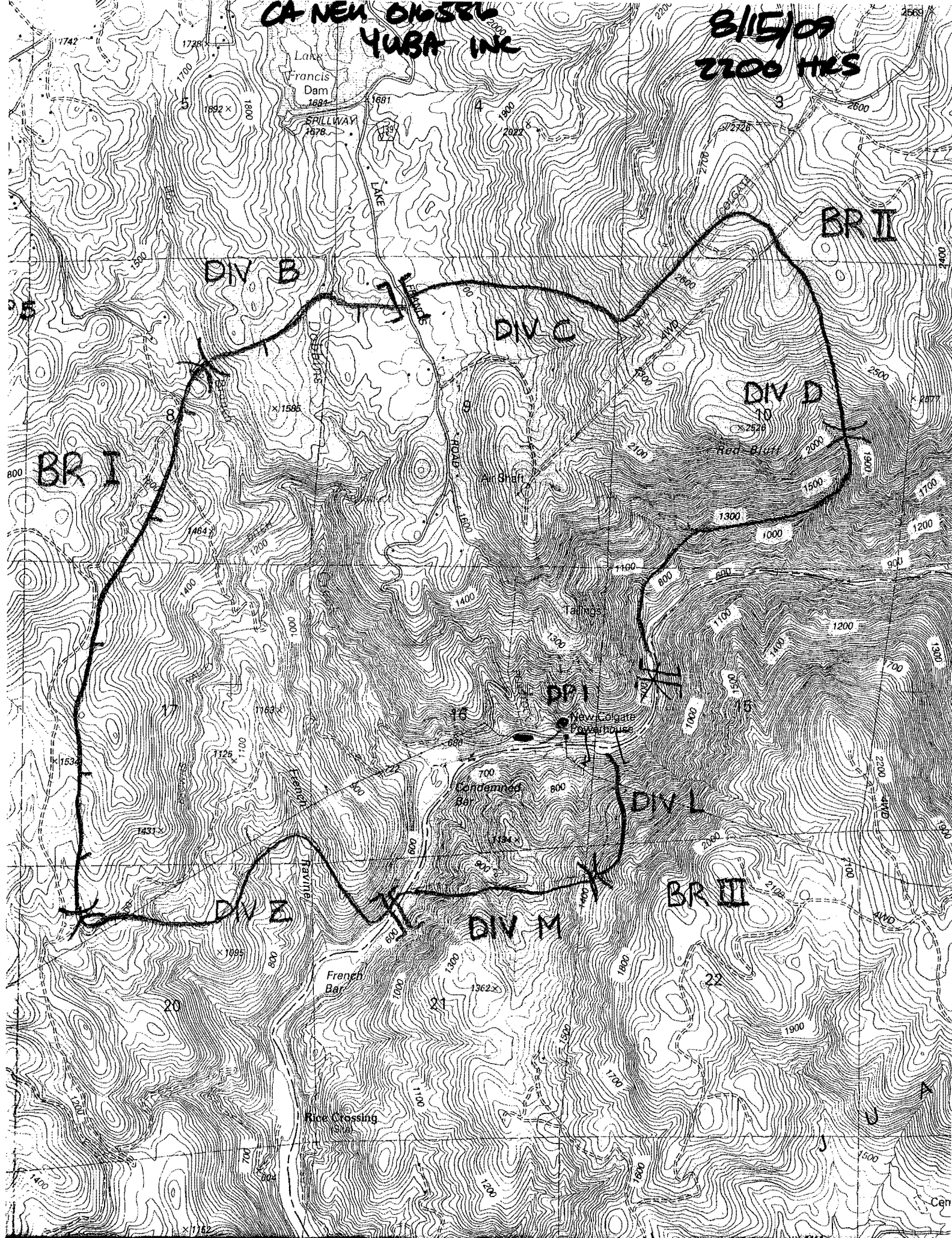
TYPE/FUNCTION	NAME OF PERSONNEL AND/OR CARGO INCLUDING INSTRUCTIONS FOR TACTICAL AIRCRAFT	MISSION START	FLY FROM	FLY TO
Air Tactical	Available from Chico AAB AA210 Available from Grass Valley AA230	0800 1000		
Helicopter Coordinator	Order from HB	0800		
Fixed Wing: Retardant	Order through ATGS Other resources DC-10 @ MCC	0800		
Helitanker: Retardant/Foam				
Rotor Wing: Retardant/Foam	Available from Brownsville Helibase, order through ATGS	0800		
Recon/Plans	Available @ Brownsville Helibase. Schedule through AOBD / ASGS. Plan for 09:00 / 11:00 / 13:00 / 15:00.			
Personnel Transport				
Cargo Transport	Helispots must be approved prior to delivery			
Dip Site Names and Locations	Coordinate with ATGS			
Initial Attack Helicopter	Order through Grass Valley Local	0800		
Air Rescue Helicopter	See Medical Plan			
Other:				

INCIDENT RADIO COMMUNICATIONS PLAN		1. Incident Name Yuba Fire	2. Date/Time Prepared 8/16/09 0000hrs	3. Operational Period Date/Time 8/16/09 0600-0600	
4. Basic Radio Channel Utilization					
Radio Type/Cache	Channel	Function	Frequency/Tone	Assignment	Remarks
Command	CDF Command 7 Tone 15		Tx: 159.3900 Rx: 151.4600	All Command	
Tactical	CDF Tac - 2		151.1600	Branch I	
Tactical	V - Tac 11		151.1375	Branch II	
Tactical				Branch III	
Air to Ground	CDF A/G		151.220	All	
5. Prepared by (Communications Unit)					

MEDICAL PLAN	1. Incident Name	2. Date Prepared	3. Time Prepared	4. Operational Period							
	Yuba Fire	08/16/09	0000 hrs	8/16/09 0600 - 0600							
5. Incident Medical Aid Station											
Medical Aid Stations	Location						Paramedics				
							Yes	No			
Medical Unit	Incident Base - Sutter County Fairgrounds							X			
6. Transportation											
A. Ambulance Services											
Name	Address				Phone		Paramedics				
							Yes	No			
Bi-County Ambulance	Marysville Rd x Hwy 20				530-743-1893		X				
Cal-Star Air Amb.	Grass Valley Emergency Command Center				GV ECC		X				
Reach Air Amb.	Grass Valley Emergency Command Center				GV ECC		X				
B. Incident Ambulances											
Name	Location						Paramedics				
							Yes	No			
Bi-County Ambu	Lake Francis Staging						X				
7. Hospitals											
Name	Address			Travel Time		Phone		Helipad		Burn Center	
				Air	Grnd			Yes	No	Yes	No
Rideout Hosp.	726 4th Street, Marysville			15	40	530-749-4300		X			X
Sierra Nevada	155 Glassen Way, Grass Vallley			10	30	530-274-6001		X			X
Enloe Med. Cntr	1531 Esplanade Circle, Chico, CA			25	90	530-332-7330		X			X
UC Davis Burn	2315 Stockton Ave., Sacramento			20	60	916-734-3636		X		X	
8. Medical Emergency Procedures											
<p>1. Immediately Notify Supervisor. Supervisor will communicate with Branch/Division:</p> <p style="margin-left: 20px;">a. Minor emergency</p> <p style="margin-left: 20px;">b. Nature of injury</p> <p style="margin-left: 20px;">c. Location of emergency</p> <p>2. Type of transportation required (Ground or Air Evac.) with reporting location/Helispot.</p> <p>Make appropriate notifications.</p>											
9. Prepared by (Medical Unit Leader)						10. Reviewed by (Safety Officer)					
						Walt Holloway, SOF1 (T)					

CA NEU OIL SER
YUBA INC

8/15/09
2200 HES



DIV B

DIV C

DIV D

BR II

BR I

DP 1

DIV L

DIV E

DIV M

BR III

Rice Crossing Site

Cent



ICP

UNIT LOG	1. Incident Name	2. Date Prepared	3. Time Prepared
4. Unit Name/Designators	5. Unit Leader (Name and Position)		6. Operational Period
7. Personnel Roster Assigned			
Name	ICS Position	Home Base	
8. Activity Log			
Time	Major Events		
9. Prepared by (Name and Position)			

