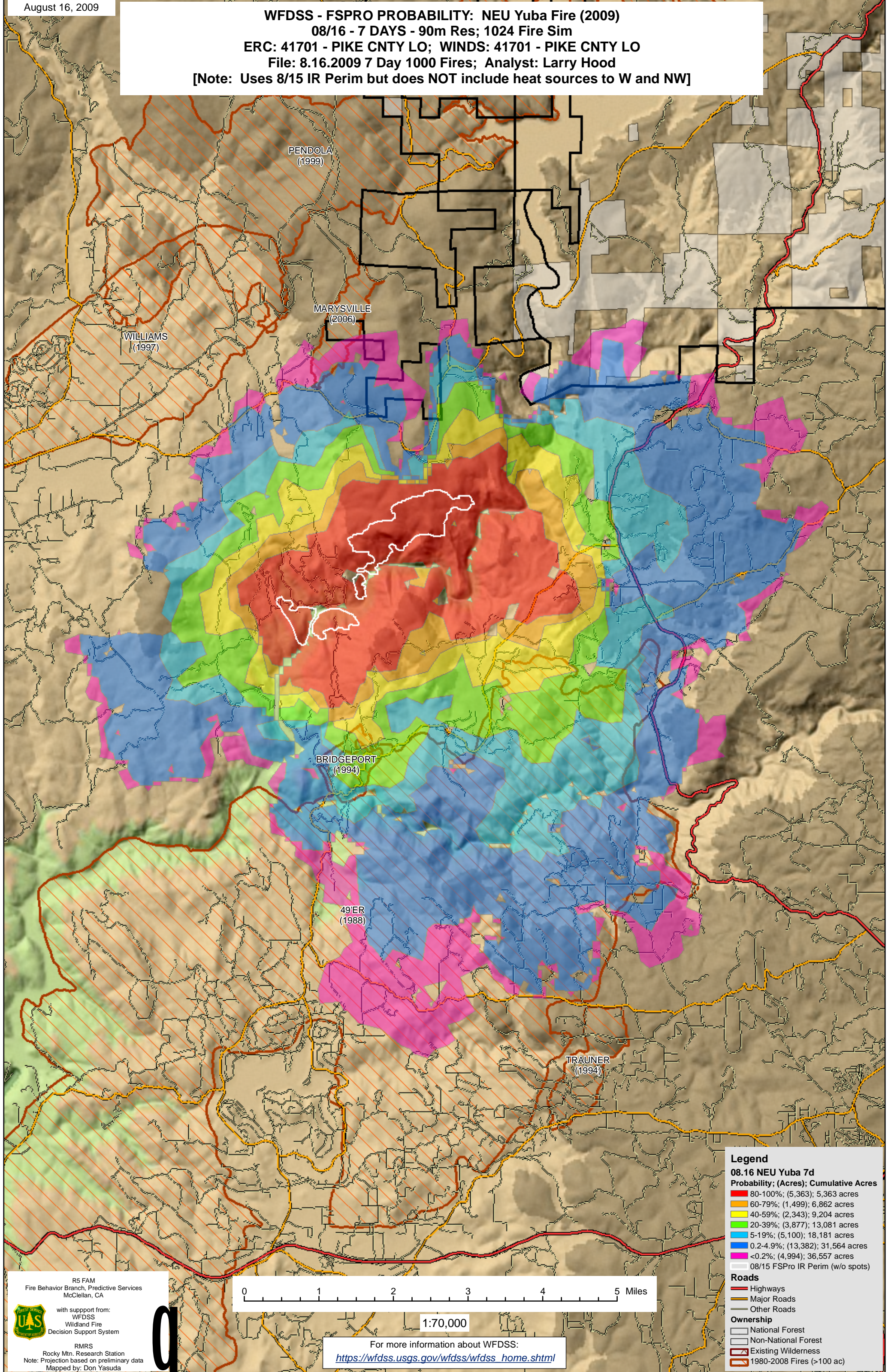


**WFDSS - FSPRO PROBABILITY: NEU Yuba Fire (2009)**  
08/16 - 7 DAYS - 90m Res; 1024 Fire Sim  
ERC: 41701 - PIKE CNTY LO; WINDS: 41701 - PIKE CNTY LO  
File: 8.16.2009 7 Day 1000 Fires; Analyst: Larry Hood  
[Note: Uses 8/15 IR Perim but does NOT include heat sources to W and NW]



**Legend**

**08.16 NEU Yuba 7d**

**Probability; (Acres); Cumulative Acres**

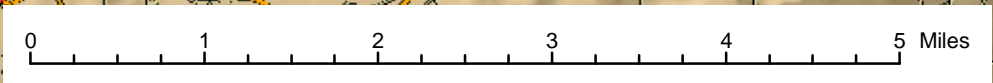
- 80-100%; (5,363); 5,363 acres
- 60-79%; (1,499); 6,862 acres
- 40-59%; (2,343); 9,204 acres
- 20-39%; (3,877); 13,081 acres
- 5-19%; (5,100); 18,181 acres
- 0.2-4.9%; (13,382); 31,564 acres
- <0.2%; (4,994); 36,557 acres
- 08/15 FSPRO IR Perim (w/o spots)

**Roads**

- Highways
- Major Roads
- Other Roads

**Ownership**

- National Forest
- Non-National Forest
- Existing Wilderness
- 1980-2008 Fires (>100 ac)



1:70,000

R5 FAM  
Fire Behavior Branch, Predictive Services  
McClellan, CA

with support from:  
WFDSS  
Wildland Fire  
Decision Support System

RMRS  
Rocky Mtn. Research Station  
Note: Projection based on preliminary data  
Mapped by: Don Yasuda

For more information about WFDSS:  
[https://wfdss.usgs.gov/wfdss/wfdss\\_home.shtml](https://wfdss.usgs.gov/wfdss/wfdss_home.shtml)