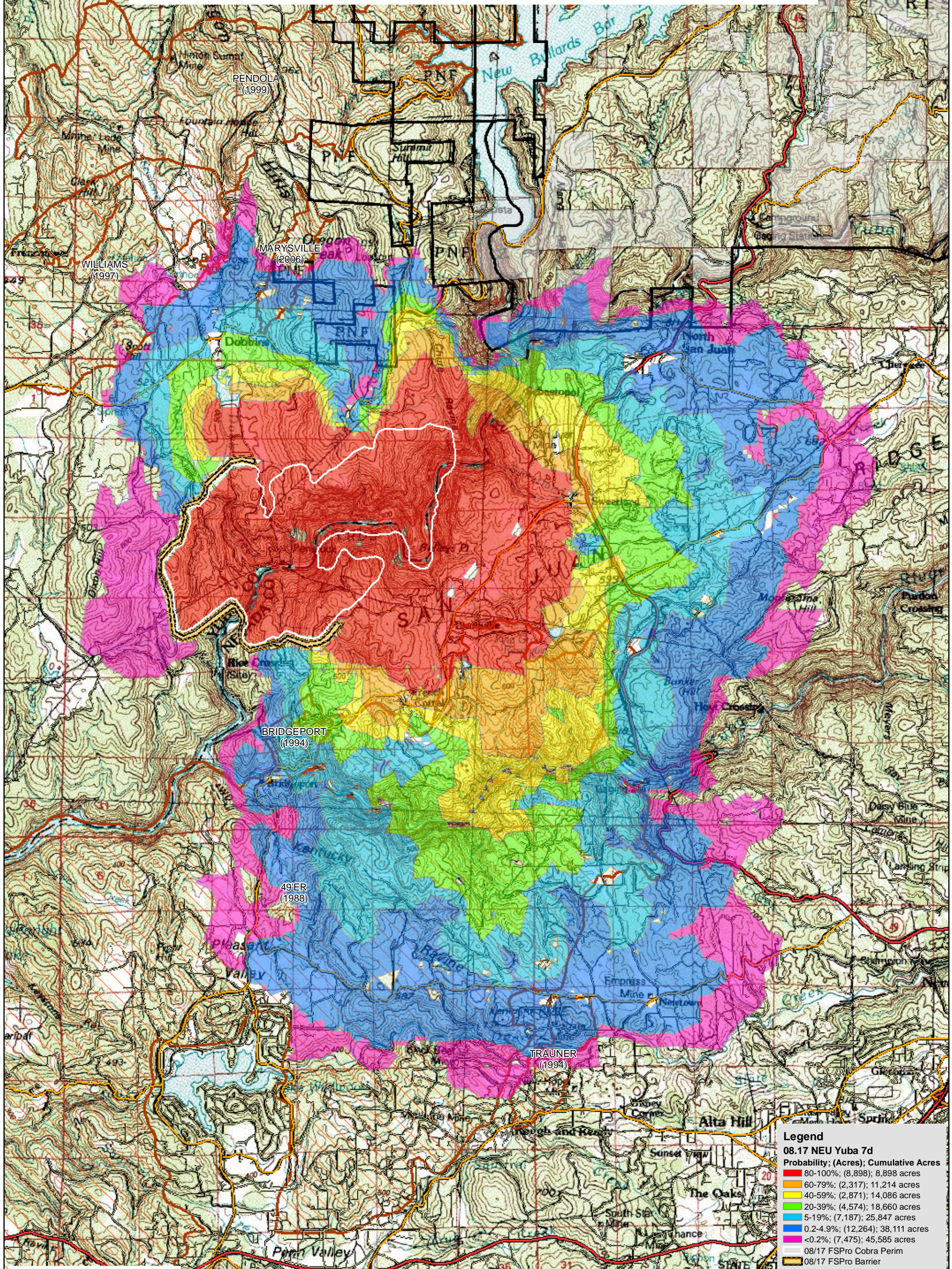


**WFDSS - FSPRO PROBABILITY: NEU Yuba Fire (2009)**  
**08/17 - 7 DAYS - 90m Res; 1024 Fire Sim**  
**ERC: 41701 - PIKE CNTY LO; WINDS: 41701 - PIKE CNTY LO**  
**File: NEU Yuba / 8.17.2009 7 Day 1000 Fires; Analyst: Larry Hood**  
**[Note: Uses 8.17 1443 Cobra Perimeter; Uses 8/17 completed line as barrier]**



**Legend**

**08.17 NEU Yuba 7d**  
**Probability; (Acres); Cumulative Acres**

- 80-100%; (8,898); 8,898 acres
- 60-79%; (2,317); 11,214 acres
- 40-59%; (2,871); 14,086 acres
- 20-39%; (4,574); 18,660 acres
- 5-19%; (7,187); 25,847 acres
- 0.2-4.9%; (12,264); 38,111 acres
- <0.2%; (7,475); 45,585 acres

08/17 FSPRO Cobra Perim  
08/17 FSPRO Barrier

**Roads**

- Highways
- Major Roads
- Other Roads

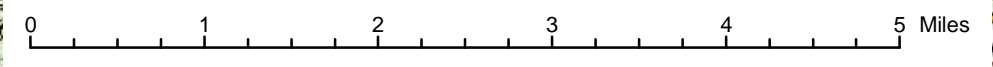
**Ownership**

- National Forest
- Non-National Forest
- Existing Wilderness
- 1980-2008 Fires (>100 ac)

R5 FAM  
Fire Behavior Branch, Predictive Services  
McClellan, CA

with support from:  
WFDSS  
Wildland Fire  
Decision Support System

RMRS  
Rocky Mtn. Research Station  
Note: Projection based on preliminary data  
Mapped by: Don Yasuda



1:70,000

For more information about WFDSS:  
[https://wfdss.usgs.gov/wfdss/wfdss\\_home.shtml](https://wfdss.usgs.gov/wfdss/wfdss_home.shtml)