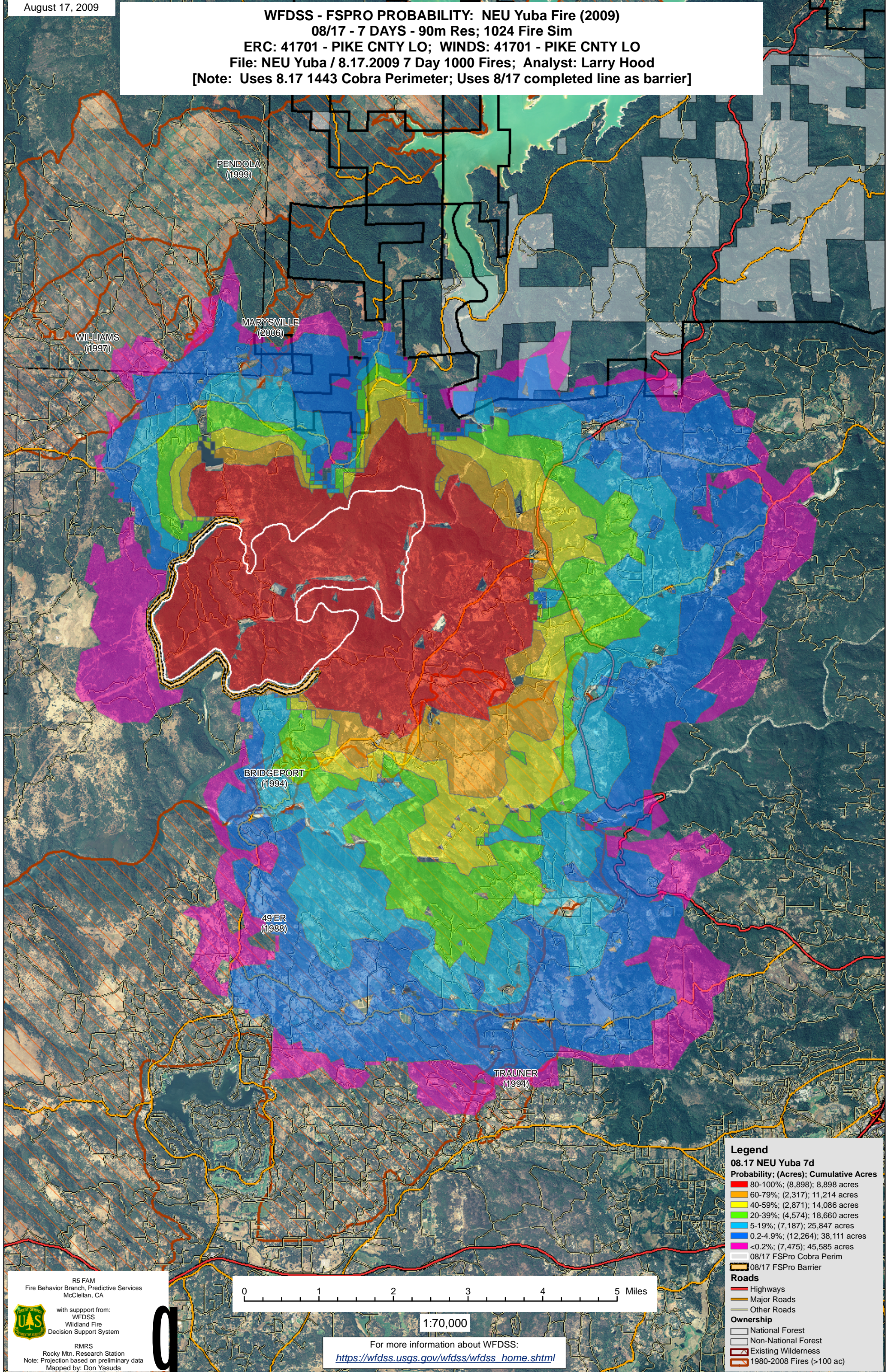


WFDSS - FSPRO PROBABILITY: NEU Yuba Fire (2009)
08/17 - 7 DAYS - 90m Res; 1024 Fire Sim
ERC: 41701 - PIKE CNTY LO; WINDS: 41701 - PIKE CNTY LO
File: NEU Yuba / 8.17.2009 7 Day 1000 Fires; Analyst: Larry Hood
[Note: Uses 8.17 1443 Cobra Perimeter; Uses 8/17 completed line as barrier]



Legend

08.17 NEU Yuba 7d
Probability; (Acres); Cumulative Acres

- 80-100%; (8,898); 8,898 acres
- 60-79%; (2,317); 11,214 acres
- 40-59%; (2,871); 14,086 acres
- 20-39%; (4,574); 18,660 acres
- 5-19%; (7,187); 25,847 acres
- 0.2-4.9%; (12,264); 38,111 acres
- <0.2%; (7,475); 45,585 acres

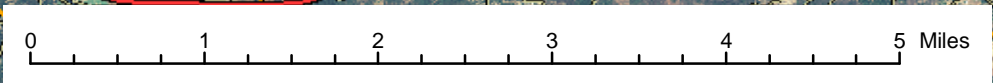
08/17 FSPRO Cobra Perim
08/17 FSPRO Barrier

Roads

- Highways
- Major Roads
- Other Roads

Ownership

- National Forest
- Non-National Forest
- Existing Wilderness
- 1980-2008 Fires (>100 ac)



1:70,000

For more information about WFDSS:
https://wfdss.usgs.gov/wfdss/wfdss_home.shtml

R5 FAM
Fire Behavior Branch, Predictive Services
McClellan, CA

with support from:
WFDSS
Wildland Fire
Decision Support System

RMRS
Rocky Mtn. Research Station
Note: Projection based on preliminary data
Mapped by: Don Yasuda