

Corral

Incident Action Plan



8/17/2009

0600-0600

Incident Objectives	1. Incident Name <i>Corral</i>	2. Date Prepared <i>8/16/2009</i>	3. Time Prepared <i>1300</i>
4. Operational Period (Date and Time) <i>8/17/2009 0600-0600</i>			
5. General Control Objectives for the Incident (include Alternatives)			
<i>Secure all fireline</i>			
<i>Mop up 150' in, aerial fuels and snags 200' in</i>			
<i>Rehab areas necessary</i>			
<i>Facilitate continued demobilization of resources</i>			
<i>Provide for safety of firefighters and other public safety members and members of the public</i>			
6. Weather Forecast for Operational Period			
<i>Temperatures in the mid 90s to low 100s. Northeast winds 8-15. RH 10-15%</i>			
7. General Safety Message			
<i>The fire is in mop-up stages, but hazards still exist. How weather can lead to heat exhaustion and may make previously quiet areas of the fire active. Fatigue becomes a factor at this point in an incident and can result in injuries. The terrain is steep and unstable and there are bees and rattlesnakes in the area. There still hot areas within the perimeter that could flare up under the right weather conditions. Remain vigilant and use 10s, 18s and LCES at all time.</i>			
8. Attachments (check if attached)			
<input type="checkbox"/> Organization List (ICS 203) <input type="checkbox"/> Medical Plan (ICS 206) <input type="checkbox"/> _____ <input type="checkbox"/> Assignment List (ICS 204) <input type="checkbox"/> Incident Map <input type="checkbox"/> _____ <input type="checkbox"/> Communications Plan (ICS 205) <input type="checkbox"/> Traffic Plan <input type="checkbox"/> _____			
ICS-202	9. Prepared by (PSC) <i>Moorhead</i>	10. Approved by (IC)	

ORGANIZATION ASSIGNMENT LIST			9. Operations Section	
1. Incident Name		<i>Corral</i>	Chief	<i>Barrett, S</i>
2. Date	<i>8/16/2009</i>	3. Time	<i>1300</i>	Deputy
4. Operational Period	<i>8/17/2009</i>	<i>0600-0600</i>	a. Division A/B	
5. Incident Commander and Staff			Division/Group	<i>Unstaffed</i>
Incident Commander	<i>McGeever</i>		Deputy	
Deputy			Division/Group	
Safety Officer			Division/Group	
Information Officer			Division/Group	
Liaison Officer			Division/Group	
6. Agency Representative			Division/Group	
Agency	Name		b. Division X/Y	
<i>State Parks</i>	<i>TBA</i>		Division/Group	<i>Lubas, T</i>
<i>Cal Fire</i>	<i>Itson, C</i>		Deputy	
			Division/Group	
			Division/Group	
			Division/Group	
			Division/Group	
			Division/Group	
			c. Branch III	
			Division/Group	
			Deputy	
			Division/Group	
			Division/Group	
			Division/Group	
7. Planning Section			Division/Group	
Chief	<i>TBA</i>		Division/Group	
Deputy			Division/Group	
Resource Unit			Division/Group	
Situation Unit			Division/Group	
Documentation Unit			d. Air Operations Branch	
Demobilization Unit			Air Operations Branch Director	
Human Resources			Air Support Supervisor	
Technical Specialists	(name / specialty)		Air Attack Supervisor	
<i>GIS Tech</i>			Helibase Manager	
			Air Tanker Coordinator	
			10. Finance Section	
			Chief	<i>Ehnat, D</i>
			Deputy	
			Time Unit	
8. Logistics Section			Procurement Unit	
Chief	<i>Sharma, S</i>		Comp/Claims Unit	
Deputy			Cost Unit	
Service Branch Dir.				
Support Branch Dir.				
Supply Unit				
Facilities Unit			Prepared by (Resource Unit Leader)	
Ground Support Unit	<i>Bird, S</i>			
Communications Unit	<i>Richie, E</i>			
Medical Unit				
Security Unit				
Food Unit			<i>Moorhead, J</i>	

FIRE BEHAVIOR FORECAST

FORECAST NO: 4

NAME OF FIRE: Corral

UNIT: CA SCU 3410

DATE & TIME ISSUED: 8/16/08 2130hrs

PREDICTION FOR: 8/17/09 2 Day

SIGNED: Dennis Burns /s/
FIRE BEHAVIOR ANALYST

WEATHER SUMMARY: Continued hot and dry

Temps: High 95-105 Low 72-74

RH: Low 10-14% High 15-25

Winds: Eye level Upslope 5-8mph, Ridges NW 6-12mph

FIRE BEHAVIOR FORECAST

GENERAL FIRE BEHAVIOR:

- No forward fire progression is expected on either Branch. In the event of a slope over or a new start in the area continue to expect rapid rates of spread with intense burning conditions and spotting out to ¼ mile. Identify areas of unburned fuels near the line as these will be your greatest threat of an escape. The highest probability for an escape will be rolling material or a torching juniper near the line.
- Probability of ignition is 90% e.g. 9-10 fire brands in fuels will ignite spot fires.
- **Specific:**
- **Branch I**
 - No forward fire progression expected most fuels have been completely consumed.
- **Branch II**
 - No forward fire progression.
 - Watch areas with steep slopes for the potential of rolling material causing slop.

Air Operations:

Clear skies with moderate winds should make for good flying conditions.

SAFETY:

Do not become complacent with the minimal fire activity. Remember tragedies often occur on quiet sections of line.

DIVISION ASSIGNMENT LIST		1. Branch	2. Division/Group X/Y		
3. Incident Name <i>Corral</i>		Date: <i>8/17/2009</i>			Time: <i>0600-0600</i>
5. Operations Personnel					
Operations Chief	<i>Barrett, S</i>	Division/Group Supervisor		<i>Lubas, T</i>	
Branch Director		Air Attack Supervisor No.			
6. Resources Assigned this Period					
Strike Team/Task Force/Resource Designator	Leader	Number Persons	Trans. Needed	Drop Off PT./Time	Pick Up PT./Time
<i>MEU Crew 1</i>	<i>TBA</i>	<i>17</i>		<i>700</i>	<i>700</i>
<i>MEU Crew 2</i>	<i>TBA</i>	<i>17</i>		<i>700</i>	<i>700</i>
<i>SKU Crew 1</i>	<i>TBA</i>	<i>17</i>		<i>700</i>	<i>700</i>
<i>WT 1 pvt</i>	<i>TBA</i>	<i>2</i>		<i>700</i>	<i>700</i>
<i>WT 2 pvt</i>	<i>TBA</i>	<i>2</i>		<i>700</i>	<i>700</i>
<i>9116C</i>	<i>Gonzalez</i>	<i>21</i>		<i>700</i>	<i>700</i>
7. Control Operations					
1. <i>Patrol and mop up in 150'</i>					
2. <i>Mop-up Aerial fuels and snags 200'</i>					
8. Special Instructions					
1. <i>Locate, identify and report GPS coordinates of all areas of value requiring rehab. (Examples: roads, fences, gates, water sources)</i>					
2. <i>Complete Fireline repair</i>					
3. <i>Back haul all trash and hose to drop points</i>					

9. Division/Group Communication Summary							
Function	System	Grp/Channel	Frequency	Function	System	Grp/Channel	Frequency
Command		<i>1</i>	<i>151.3550 W</i>	Tactical		<i>CDF Tac 2</i>	<i>151.1600 W</i>
#REF!							
Air to Ground							
#REF!							
Prepared by (RESL)		Approved by (PSC)			Date		Time
					<i>8/16/2009</i>		<i>1300</i>

DIVISION ASSIGNMENT LIST		1. Branch	2. Division/Group Dozer Group		
3. Incident Name <i>Corral</i>		4. Operational Period Date: <i>8/17/2009</i> Time: <i>0600-0600</i>			
5. Operations Personnel					
Operations Chief	<i>Barrett, S</i>	Division/Group Supervisor		<i>Ross, S</i>	
Branch Director		Air Attack Supervisor No.			
6. Resources Assigned this Period					
Strike Team/Task Force/Resource Designator	Leader	Number Persons	Trans. Needed	Drop Off PT./Time	Pick Up PT./Time
<i>Dozer Road Runner</i>	<i>Gonzalez</i>	<i>2</i>		<i>700</i>	<i>700</i>
<i>Dozer</i>	<i>Dargas</i>	<i>2</i>		<i>700</i>	<i>700</i>
<i>16E1</i>	<i>Macumber</i>	<i>2</i>		<i>700</i>	<i>700</i>
7. Control Operations <i>1. Continue rehab operations</i>					
8. Special Instructions					

9. Division/Group Communication Summary							
Function	System	Grp/Channel	Frequency	Function	System	Grp/Channel	Frequency
Command	<i>Ch 1</i>	<i>1</i>	<i>151.3550 W</i>	Tactical	<i>Ch 3</i>	<i>White 2</i>	<i>154.2650 W</i>
Air to Ground							
Prepared by (RESL)		Approved by (PSC) <i>Moorhead, J</i>			Date <i>8/16/2009</i>		Time <i>1300</i>

DIVISION ASSIGNMENT LIST		1. Branch	2. Division/Group Staging		
3. Incident Name <i>Corral</i>		4. Operational Period Date: <i>8/17/2009</i> Time: <i>0600-0600</i>			
5. Operations Personnel					
Operations Chief	<i>Barrett, S</i>	Division/Group Supervisor			
Branch Director		Air Attack Supervisor No.			
6. Resources Assigned this Period					
Strike Team/Task Force/Resource Designator	Leader	Number Persons	Trans. Needed	Drop Off PT./Time	Pick Up PT./Time
<i>PVT WT</i>	<i>TBA</i>	<i>2</i>		<i>700</i>	<i>700</i>
<i>SCU Del Puerto crew 1</i>	<i>TBA</i>	<i>17</i>		<i>700</i>	<i>700</i>
<i>9550C</i>	<i>Speer, P</i>	<i>21</i>		<i>700</i>	<i>700</i>
<i>20PF</i>		<i>1</i>		<i>At Livermore Airport</i>	
7. Control Operations <i>1. Demobilization</i>					
8. Special Instructions <i>Water tender to be used for weed wash at demob</i>					

9. Division/Group Communication Summary							
Function	System	Grp/Channel	Frequency	Function	System	Grp/Channel	Frequency
Command		<i>1</i>	<i>151.3550 W</i>	Tactical			
Air to Ground							
Prepared by (RESL)		Approved by (PSC)			Date		Time
					<i>8/16/2009</i>		<i>1300</i>

INCIDENT RADIO COMMUNICATIONS PLAN				1. Incident Name	2. Date/Time Prepared	3. Operational Period Date/Time
				Corral	8/17/09 1500	8/17/09 1500
4. Basic Radio Channel Utilization						
Radio Type/Cache	Channel	Function	Frequency/Tone	Assignment	Remarks	
King NIFC	CDF C1T1	Command	151.3550 W	Command	Tone 1 Mt. Diablo	
King NIFC	CDF Tac 2	Tactical	151.1600W	X/Y		
King NIFC	White 2	Tactical	154.2650 W	Dozer Group		
King NIFC						
King NIFC						
King NIFC						
King NIFC						
King NIFC						
King NIFC						
King NIFC						
5. Prepared by (Communications Unit)				Richie, E		

Medical Plan	Incident Name <i>Corral Incident CA-SCU-3410</i>	Date Prepared <i>8/17/2009</i>	Time Prepared <i>16:00:00</i>	Operational Period <i>8/16/09 0600-0600</i>
---------------------	---	-----------------------------------	----------------------------------	--

5. Incident Medical Aid Stations			
Medical Aid Stations	Location	Paramedics	
		Yes	No
	<i>Not Available</i>		

6. Transportation				
A. Ambulance Services				
Name	Address	Phone	Paramedics	
			Yes	No
<i>AMR</i>	<i>455 West Beverly, Tracy Ca. 95376</i>	<i>911</i>		
	<i>209-948-5136</i>		<i>x</i>	
<i>AMR</i>	<i>San Joaquin Base Operation</i>	<i>911</i>	<i>x</i>	
	<i>400 Fresno AVE</i>			
<i>AMR Sup</i>	<i>209-835-8853</i>			

B. Incident Ambulances			
Name	Location	Paramedics	
		Yes	No
<i>Request ambulance through Division/Group</i>			

7. Hospitals								
Name	Address	Travel Time		Phone	Helipad		Burn Center	
		Air	Grnd		Yes	No	Yes	No
<i>Sutter Tracy</i>			<i>12</i>			<i>x</i>		<i>x</i>
<i>Community Hosp</i>	<i>1420 N. Tracy Blvd 209-835-1500</i>							
<i>Valley Care Plea</i>	<i>Pleasanton CA</i>		<i>25</i>			<i>x</i>		<i>x</i>
<i>Kaiser Manteca</i>	<i>1777 West Yosemite Ave</i>		<i>30</i>		<i>x</i>			<i>x</i>
	<i>209-825-3700</i>							
<i>UC Davis</i>	<i>Davis, CA</i>	<i>20</i>	<i>80</i>		<i>x</i>		<i>x</i>	

8. Medical Emergency Procedures

Provide for Safety of personnel. Provide water and rest periods as appropriate. Provide first aid for injuries and treatment. Notify Immediate supervisor of injury. Determine the seriousness of the injury and provide transport to a safe location. Division and Safety Officer should be notified through Incident Communications. Clear radio traffic from the Command Channel during the emergency. The closest EMS personnel (line EMT or EMTP) will respond to provide triage and treatment. Branch or Division and Safety will coordinate the evacuation off the fireline. Medical will coordinate with Safety on the best location to transfer of care to 911 responding ambulance.

ICS-206 NFES 1331	Prepared by (Medical Unit Leader) <i>B/C Darrell Lee, MEDL</i>	Reviewed by (Safety Officer)
-----------------------------	---	------------------------------

Safety Message

- Hydrate early and often



- Warmer/drier weather is expected, be wary
- LCES- 10's and 18's – especially on under slung line



- Snakes, Bees and Badger holes in area



- Watch your step/driving, uneven terrain, narrow roads, steep drop offs



- PPE – lots of potential headache material



- STAY AWAY from Life Hazard flagged areas! Division X



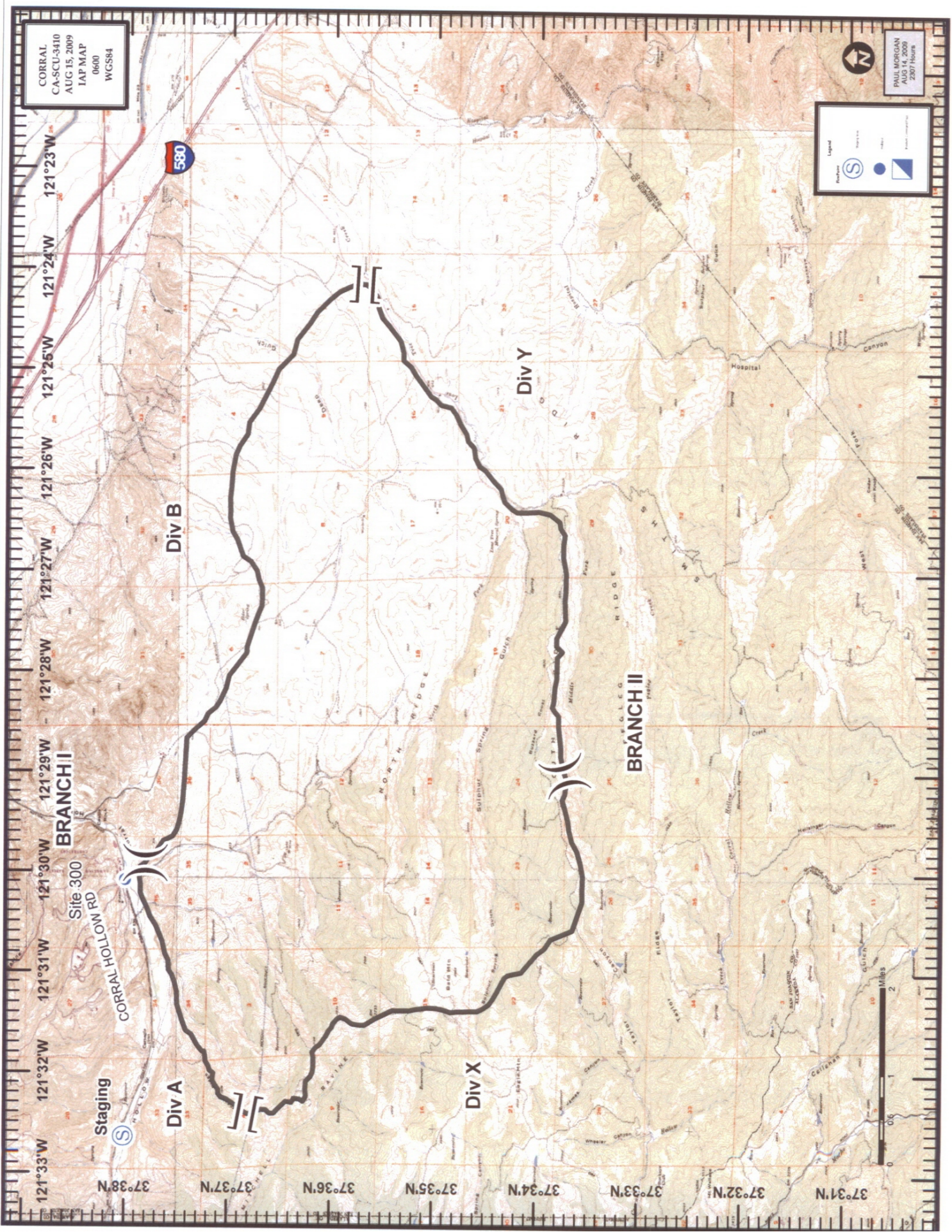
- Dozers – never work in front/below – make eye contact with driver before approaching

CORRAL
CA-SCU-3410
AUG 15, 2009
IAP MAP
0600
WGS84

PAUL MORGAN
AUG 14, 2009
2:01 Hours

Legend

- Property
- Highway
- Water
- Other
- Point
- Line
- Area



121°33'W 121°32'W 121°31'W 121°30'W 121°29'W 121°28'W 121°27'W 121°26'W 121°25'W 121°24'W 121°23'W

37°31'N 37°32'N 37°33'N 37°34'N 37°35'N 37°36'N 37°37'N 37°38'N

Div A

Div B

Div X

Div Y

BRANCH II

Staging

Site 300

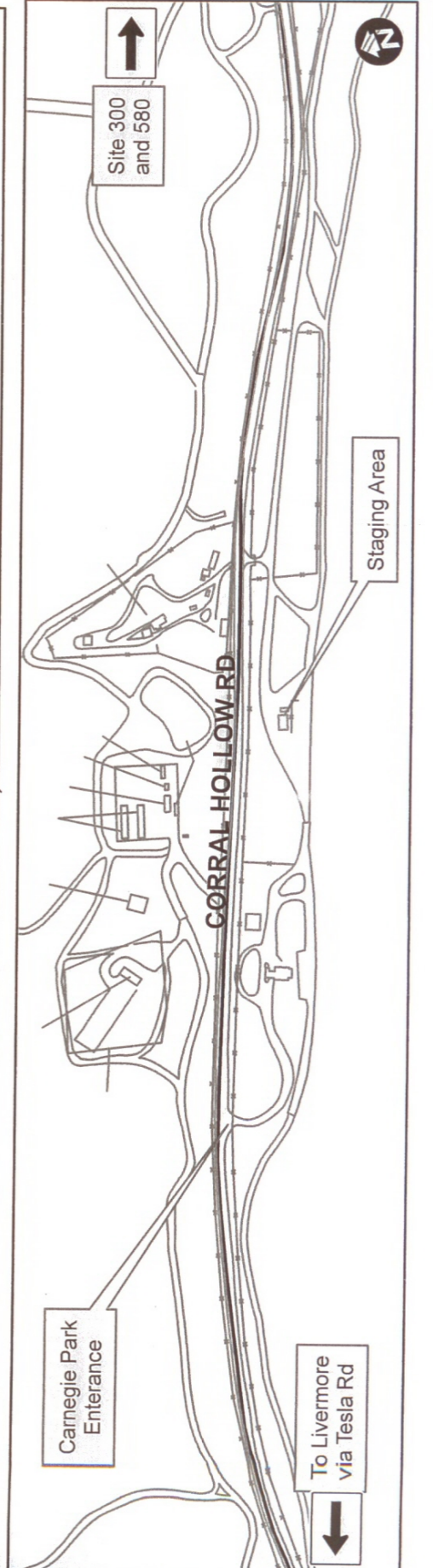
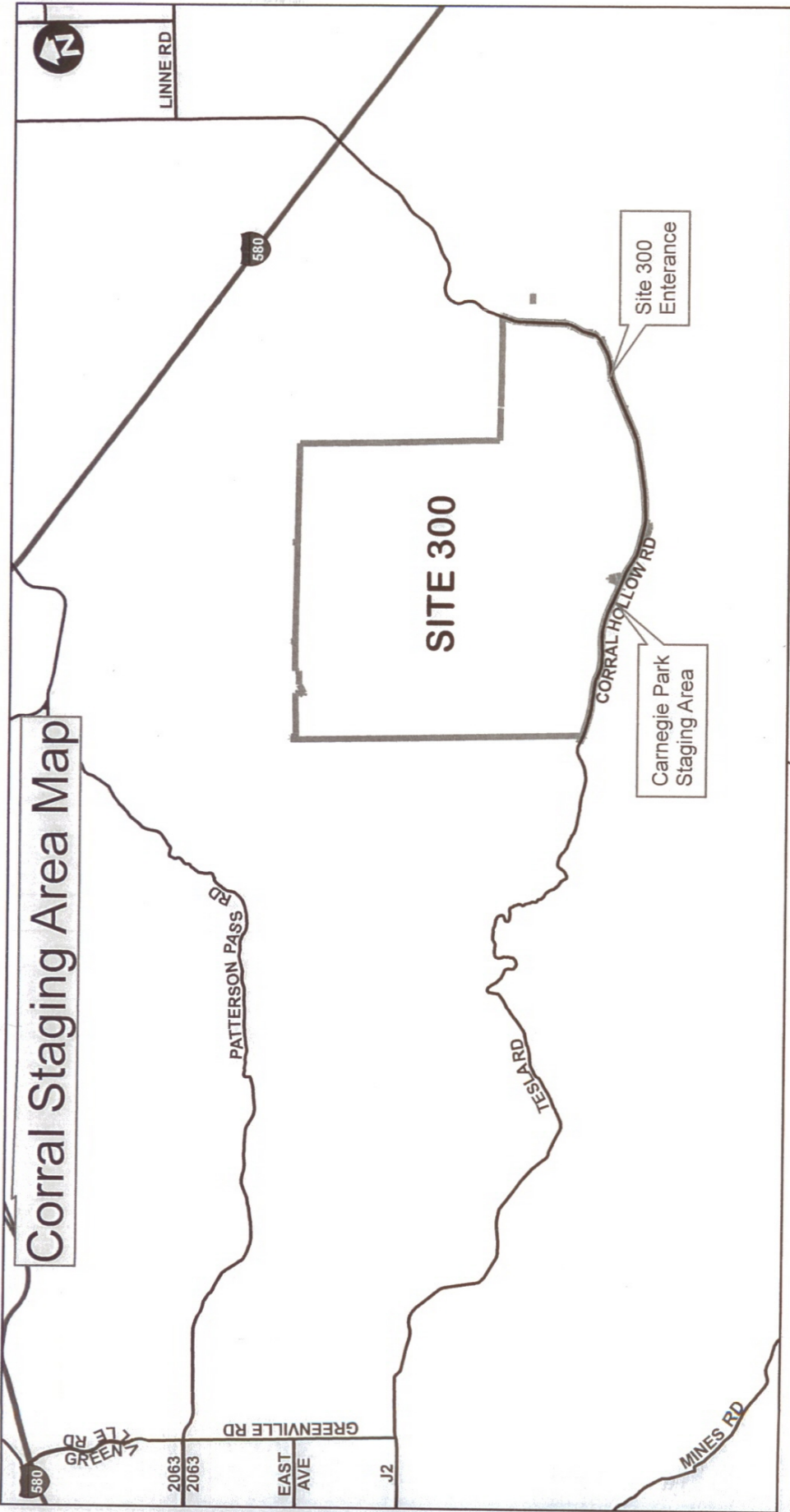
CORRAL HOLLOW RD

580

0 1 2 Miles

0 1 2 Miles

Corral Staging Area Map



Directions to Demob

Begin Demob at Carnegie Park

After Mechanical Inspection go NNE on Corral Hollow

Take Hwy 580 N to Mountain House

Turn right onto Mountain House

Make first right onto W. Schulte

**Demob is at the Castle Rock Station of CDF/Tracy Fire
at the corner of W. Schulte and Hansen.**

Demob Order

- 1) Complete mechanical inspection and weed wash at Carnegie Park**
- 2) Bring all paperwork (221, inspection sheet, 214s) to Demob**
- 3) Check-out with; 1) Comms, 2) Finance, 3) Demob (at ICP)**

Demobilization Check-Out

Incident Name <i>Corral</i>	Date/Time <i>8/16/2009 1300</i>	Demob. No.
--------------------------------	------------------------------------	------------

Unit/Personnel Released

Transportation Type/No.

Actual Release Date/Time	Manifest Yes No	Number
--------------------------	-----------------	--------

Destination:	Area/Agency/Region Notified Name _____ Date _____
--------------	---

Unit Leader Responsible For Collecting Performance Rating:

Unit/Personnel: You and your resources have been released subject to sign off from the following:
Demob Unit Leader Check Appropriate Box []

Logistics Section

- Supply Unit _____
- Communications Unit _____
- Facilities Unit _____
- Ground Support Unit Leader _____

Planning Section

- Documentation Unit _____

Finance/Administration Section

- Time Unit _____

Other

- _____
- _____

Remarks:

ICS-221

NFES 1353

