

**# CA-SCU-3410
CORRAL INCIDENT
08/14/2009**



INCIDENT ACTION PLAN

Operational period: 0600-0600

Incident Objectives	1. Incident Name <i>Corral</i>	2. Date Prepared <i>8/14/2009</i>	3. Time Prepared <i>1200</i>
4. Operational Period (Date and Time) <i>8/15/2009 0600</i>			
5. General Control Objectives for the Incident (include Alternatives)			
<i>Keep the fire within the following boundaries:</i>			
<i>East of Carnegie Ridge, dozer line</i>			
<i>South of Corral Hollow</i>			
<i>West of 580</i>			
<i>North of Peg Leg Ridge</i>			
<i>Provide for safety of firefighters and other public safety members and members of the public</i>			
6. Weather Forecast for Operational Period			
<i>Temperatures in mid 90s. Winds north from 4 to 12 (over 1200 ft) with 20 ft gusts to 20. RH 10-14</i>			
7. General Safety Message			
<i>Weather will continue to be warm with wind gusts to 20 mph. Fire behavior will be unpredictable. Crews need to keep hydrated and avoid overheating. Rattlesnakes and bees have also been observed in the area. Footing is uneven. Observe 10s and 18s and LCES at all times.</i>			
8. Attachments (check if attached)			
<input checked="" type="checkbox"/> Organization List (ICS 203)		<input checked="" type="checkbox"/> Medical Plan (ICS 206) <input type="checkbox"/>	
<input checked="" type="checkbox"/> Assignment List (ICS 204)		<input checked="" type="checkbox"/> Incident Map <input type="checkbox"/>	
<input checked="" type="checkbox"/> Communications Plan (ICS 205)		<input checked="" type="checkbox"/> Traffic Plan <input type="checkbox"/>	
ICS-202	9. Prepared by (PSC) <i>Moorhead</i>	10. Approved by (IC) <i>Itson</i>	

ORGANIZATION ASSIGNMENT LIST		9. Operations Section	
1. Incident Name		Op's Chief	Barrett CALFIRE
Corral		Deputy	
2. Date		a. Branch I	
08/14/2009	3. Time	Branch Director	Fogel FRE
	2300	Deputy	
4. Operational Period		Division/Group	A Unstaffed
0600-0600		Division/Group	B Unstaffed
Position	Name	Division/Group	
5. Incident Commander and Command Staff		Division/Group	
Incident Commander	McGeever CALFIRE	Division/Group	
Deputy	Parrot POE	Division/Group	
Safety Officer	Cory FRE	Staging Area	
Information Officer	Knowles ACF		
Liaison Officer	Shippee PRK	b. Branch II	
6. Agency Representative		Branch Director	Boxman CALFIRE
Agency	Name	Deputy	
State Parks	TBA	Division/Group	X TBA
CALFIRE	Itson	Division/Group	Y Lubas CALFIRE
		Division/Group	
		Division/Group	
		Division/Group	
		Staging Area	Unassigned
7. Planning/Intelligence Section		c. Branch III	
Plans/Intel Chief	Moorhead LAP	Branch Director	
Deputy	Crudo ALB	Deputy	
Resources Unit	Smith LAP	Division/Group	
Situation Unit	Leonard MOR	Division/Group	
Documentation Unit		Division/Group	
Demobilization Unit		Division/Group	
Technical Specialists		Division/Group	
Human Resources		d. Air Operations Branch	
Training		Air Operations Branch Director	
GIS	Morgan ACF	Air Tactical Supervisor	
INVF	Steward CALFIRE	Air Support Supervisor	
INVF	Engel CALFIRE	Helicopter Coordinator	
FBAN	Burns LAP	Air Tanker Coordinator	
8. Logistics Section		10. Finance/Administration Section	
Logistics Chief	Schnepf ACF	Finance/Admin. Chief	Ehnat CALFIRE
Deputy	Terra ACF	Deputy	Athey CALFIRE
Supply Unit		Time Unit	Olaisis CALFIRE
Facilities Unit		Procurement Unit	
Ground Support Unit		Compensation/Claims Unit	
Communications Unit	Kerwin CON	Cost Unit	
Medical Unit	Lee MOR	Prepared by (Resource Unit Leader)	
Food Unit		B. Smith	

Spot Forecast for Corral Fire
National Weather Service Monterey, CA
510 PM PDT Fri Aug 14 2009

IF CONDITIONS BECOME UNREPRESENTATIVE,
CONTACT THE NATIONAL WEATHER SERVICE.

...NORTH NORTHEAST WINDS EXPECTED OVER THE FIRE TONIGHT THROUGH
SUNDAY...

...WARMER AND DRIER CONDITIONS ALSO EXPECTED TO DEVELOP...

DISCUSSION...A SURFACE THERMAL TROUGH IS EXPECTED TO DEVELOP FRIDAY
NIGHT BEHIND A DEPARTING COLD FRONT. THIS WILL RESULT IN A WIND SHIFT
TO THE NORTH NORTHEAST LATE FRIDAY NIGHT INTO SATURDAY. WINDS WILL BE
STRONGEST ABOVE 1200 FEET. WITH THIS WIND SHIFT ALSO EXPECT DAYTIME
TEMPERATURES TO INCREASE AND RELATIVE HUMIDITY TO DECREASE.

FOR SATURDAY

SKY/WEATHER.....MOSTLY SUNNY AND DRY
TEMPERATURE.....HIGH 92 TO 96
HUMIDITY.....MIN 8 TO 10 PCT
EYE LEVEL WIND.....BELOW 1200 FEET WEST NORTH WEST 3 TO 5 MPH
 ABOVE 1200 FEET NORTH NORTHEAST 6 TO 12 MPH
 BECOMING NORTH NORTHWEST EARLY AFTERNOON
20 FOOT WIND.....BELOW 1200 FEET WEST NORTHWEST 5 TO 10 MPH
 ABOVE 1200 FEET NORTH NORTHEAST 12 TO 18 MPH
 BECOMING NORTH NORTHWEST EARLY AFTERNOON
CWR.....0 PCT
MARINE LAYER.....NONE FEET

FOR SATURDAY NIGHT

SKY/WEATHER.....MOSTLY CLEAR
TEMPERATURE.....LOW 66 TO 68
HUMIDITY.....MAX 30 TO 35 PCT
EYE LEVEL WIND.....BELOW 1200 FEET WEST 2 TO 4 MPH
 ABOVE 1200 FEET NORTH 3 TO 6 MPH
20 FOOT WIND.....BELOW 1200 FEET WEST 5 TO 8 MPH
 ABOVE 1200 FEET NORTH 6 TO 12 MPH
CWR.....0 PCT
MARINE LAYER.....NONE FEET

OUTLOOK FOR SUNDAY

SKY/WEATHER.....MOSTLY CLEAR AND DRY
TEMPERATURE.....HIGH 94 TO 99
HUMIDITY.....MIN 6 TO 8 PCT
EYE LEVEL WIND.....BELOW 1200 FEET WEST NORTHWEST 2 TO 4 MPH
 ABOVE 1200 FEET NORTH 4 TO 6 MPH BECOMING
 NORTHWEST IN THE AFTERNOON

20 FOOT WIND.....BELOW 1200 FEET WEST NORTHWEST 4 TO 6 MPH
ABOVE 1200 FEET NORTH 5 TO 10 MPH BECOMING
NORTHWEST IN THE AFTERNOON

CWR.....0 PCT

MARINE LAYER.....NONE FEET

FORECASTER...LARRY

FIRE BEHAVIOR FORECAST

FORECAST NO: 2

NAME OF FIRE: Corral

UNIT: CA SCU 3410

DATE & TIME ISSUED: 8/15/08 2130hrs

PREDICTION FOR: 8/15/09 24 hr

SIGNED: Dennis Burns /s/

FIRE BEHAVIOR ANALYST

WEATHER SUMMARY: Warmer, Dryer with gusty north winds

Temps: High 94-98 Low 72-74

RH: Low 10-14% High 15-25

Winds: Eye level N 5-8mph, gusts N 15-20mph

FIRE BEHAVIOR FORECAST

GENERAL FIRE BEHAVIOR:

- Expect intense burning conditions on the south and west sides of the fire were open line exists. A warming trend is setting up with off shore winds through the weekend watch your alignment with the fire if this event sets up. This area is infamous for dry hot down canyon winds at night, the weather is setting up for this to take place, stay alert for this wind change. Grasses are sparse and the main fire progression has been from bush to bush and from torching junipers. Expect similar fire spread to continue.
- Probability of ignition is 90% e.g. 9-10 fire brands in fuels will ignite spot fires.
- **Specific:**
- **Branch I**
- No forward fire progression expected most fuels have been completely consumed.
- **Branch II**
- Fire behavior will increase through out the day. Slow to moderate rates of spread early becoming moderate to rapid in the afternoon. Watch wind alignment.
- Expect flame lengths 4-10 feet, with backing fire at 1-3 feet.
- Spot fires probable near the line and possible out ¼ mile.
- Expect rates of spread of 180 plus chains per hour if head fire runs with the wind.

Air Operations:

Clear skies with moderate winds should make for good flying conditions.
Gusty winds in the afternoon.

SAFETY:

Watch and know your wind direction! What is it doing to the fire?

DIVISION ASSIGNMENT LIST		1. Branch 1		2. Division/Group A/B			
3. Incident Name Corral		4. Operational Period Date: 08/15/09 Time: 0600-0600					
5. Operations Personnel							
Operations Chief		Barrett		Division/Group Supervisor Unassigned			
Branch Director		Fogel		Air Attack Supervisor			
6. Resources Assigned this Period							
Strike Team/Task Force/ Resource Designator	Leader	Last Shift	Number Persons	Trans. Needed	Drop Off PT./Time	Pick Up PT./Time	
9116 C	Gonzalez		26	N	0700		
9330C	Allen		15	N	0700		
FRE 355	Thomas		3	N	0700		
ACF 420	Dugan		2	N	0700		
ACF 410	Dugan		2	N	0700		
ST/9142-L	In Place			N	0700		
PRK WT 44	Yoder		2	N	0700		
INVF O-121	Engel		1	N	0700		
INVF O-120	Stewart		1	N	0700		
7. Control Operations							
<ul style="list-style-type: none"> Keep fire E. of Carnegie Ridge dozer line, S. of Corral Hollow and W. of I-580 Secure line and mop-up to 100 feet. 							
8. Special Instructions							
<ul style="list-style-type: none"> Locate, identify and report all coordinates of values requiring rehab. Examples: roads, fences, gates, water sources. Insure all resources have been checked in. 							
9. Division/Group Communication Summary							
Function	Frequency	System	Channel	Function	Frequency	System	Channel
Command	151.3550 W		1				
	159.3000 W						
Tactical Div/Group	151.1600 W		2	Air to Ground	151.2200 N		15
	151.1600 W				151.2200 N		
Prepared by (Resource Unit Leader) B. Smith		Approved by (Planning Section Chief) J. Moorehead		Date 8/14/09		Time 2300	

DIVISION ASSIGNMENT LIST		1. Branch 2		2. Division/Group X			
3. Incident Name Corral		4. Operational Period Date: 08/15/09 Time: 0600-0600					
5. Operations Personnel							
Operations Chief	Barrett	Division/Group Supervisor		Unassigned			
Branch Director	Boxman	Air Attack Supervisor					
6. Resources Assigned this Period							
Strike Team/Task Force/ Resource Designator	Leader	Last Shift	Number Persons	Trans. Needed	Drop Off PT./Time	Pick Up PT./Time	
SCU 1676	Nichols		4	N	0700		
SCU 1665	Ybarra		4	N	0700		
LMD WT-31	Pinnelli		1	N	0700		
RIN WT-7592	Baptist		2	N	0700		
OES WT 3295	Atkinson		2	N	0700		
LAK WT-T16	Clark		2	N	0700		
BCN WT-11	Matthews		2	N	0700		
PVT Dozer 16E-1	McCumber		1	N	0700		
PVT Dozer E-28	Tassara		1	N	0700		
PVT TRAS E-29	Tassara		1	N	0700		
SCU Dozer 1642			1	N	0700		
SOFR	Krause		1	N	0700		
7. Control Operations							
<ul style="list-style-type: none"> Establish control lines to keep fire E. of Carnegie Ridge dozer line, W. of I-580, and N. of Peg Leg Ridge. Secure line and mop-up to 100 feet. 							
8. Special Instructions							
<ul style="list-style-type: none"> Locate, identify and report all coordinates of values requiring rehab. Examples: roads, fences, gates, water sources. Insure all resources have been checked in. 							
9. Division/Group Communication Summary							
Function	Frequency	System	Channel	Function	Frequency	System	Channel
Command	151.3550 W		1				
	159.3000 W						
Tactical Div/Group	168.6000 N		9	Air to Ground	151.2200 N		15
	168.6000 N				151.2200 N		
Prepared by (Resource Unit Leader) B. Smith		Approved by (Planning Section Chief) J. Moorehead		Date 8/14/09		Time 2300	

DIVISION ASSIGNMENT LIST		1. Branch		2. Division/Group			
3. Incident Name Corral		4. Operational Period Date: 08/15/09 Time: 0600-0600					
5. Operations Personnel							
Operations Chief	Barrett	Division/Group Supervisor		Unassigned			
Branch Director	Lubas, Madsen (†)	Air Attack Supervisor					
6. Resources Assigned this Period							
Strike Team/Task Force/ Resource Designator	Leader	Last Shift	Number Persons	Trans. Needed	Drop Off PT./Time	Pick Up PT./Time	
ST/ 9550 C	Specr		21	N	0700		
ST/9477 G			36	N	0700		
ST/ 9147 G	Baker		34	N	0700		
ACF Dozer D-18			1	N	0700		
PVT Dozer E-19	McFeely		2	N	0700		
PVT Dozer E-18			2	N	0700		
7. Control Operations							
<ul style="list-style-type: none"> Establish control lines to keep fire E. of Carnegie Ridge dozer line, W. of I-580, and N. of Peg Leg Ridge. Secure line and mop-up to 100 feet. 							
8. Special Instructions							
<ul style="list-style-type: none"> Locate, identify and report all coordinates of values requiring rehab. Examples: roads, fences, gates, water sources. Insure all resources have been checked in. 							
9. Division/Group Communication Summary							
Function	Frequency	System	Channel	Function	Frequency	System	Channel
Command	151.3550 W		1				
	159.3000 W						
Tactical Div/Group	168.2000 N		8	Air to Ground	151.2200 N		15
	168.2000 N				151.2200 N		
Prepared by (Resource Unit Leader) B. Smith		Approved by (Planning Section Chief) J. Moorehead		Date 8/14/09		Time 2300	

INCIDENT RADIO COMMUNICATIONS PLAN

Incident Name
CORRAL INCIDENT

Date/Time Prepared
08/14/09 21:50 HRS

Operational Period Date/Time
8/15/09 0600 TO 8/16/09 0600

Ch #	Function	Channel Name/Trunked Radio System Talkgroup	Assignment	RX Freq	N or W	RX Tone/NAC	TX Freq	N or W	Tx Tone/NAC	Mode	Remarks
1	COMMAND	CDF C1T1	CDF C1T1	151.3550	W	0.0	159.3000	W	0.0	A	TONE 1MT DIABLO
2	TACTICAL	CDF TAC 2	DIV A	151.1600	W	0.0	151.1600	W	0.0	A	BRANCH 1
3	TACTICAL	VTAC 11		151.1375	N	0.0	151.1375	N	156.7	A	
4	TACTICAL	VTAC 13		158.7375	N	0.0	158.7375	N	156.7	A	
5	TACTICAL	NIFC T1		168.0500	N	0.0	168.0500	N	0.0	A	
6	COMMAND	OES 1B	CONTINGENCY CMD	154.1600	W	0.0	159.1950	W	0.0	A	Tone 8 = Diablo, Tone 9 = Loc Rptr
7	TACTICAL	NIFC T2	DIV Y	168.2000	N	0.0	168.2000	N	0.0	A	BRANCH II
8	TACTICAL	NIFC T3	DIV X	168.6000	N	0.0	168.6000	N	0.0	A	BRANCH II
9	TACTICAL	NIFC T4		164.1375	N	0.0	164.1375	N	0.0	A	
10	TACTICAL	WHITE 3	STRUCTURE PROT	154.2950	W	0.0	154.2950	W	0.0	A	CONTINGENCY
11	TACTICAL	WHITE 1	STAGING	154.2800	W	0.0	154.2800	W	0.0	A	
12	EMS A/G	CALCORD	EMS A/G	156.0750	W	0.0	156.0750	W	0.0	A	EMS A/G
13	AIR GUARD	AIRGUARD	ALL DIVISIONS	168.6250	N		168.6250	N	110.9	A	Urgent USE ONLY
14	Air to Ground	CDF A/G	A/G	151.2200	N	0.0	151.2200	N	0.0	A	CDF Air to Ground NET
15	AIR GUARD	AIRGUARD	ALL DIVISIONS	168.6250	N		168.6250	N	110.9	A	Urgent USE ONLY

5. Prepared by (Communications Unit)

Kody Kerwin EBIMT COML

Kody Kerwin

Incident Location

County ALAMEDA State CA Latitude N Longitude W

The convention calls for frequency lists to show four digits after the decimal place, followed by either an "N" or a "W", depending on whether the frequency is narrow or wide band. Mode refers to either "A" or "D" indicating analog or digital (Project 25)

Medical Plan	Incident Name <i>Corral Incident CA-SCU-3410</i>	Date Prepared <i>8/15/2009</i>	Time Prepared <i>16:00:00</i>	Operational Period <i>8/15/09 0600</i>
---------------------	---	-----------------------------------	----------------------------------	---

5. Incident Medical Aid Stations

Medical Aid Stations	Location	Paramedics	
		Yes	No
	<i>Not Available</i>		

6. Transportation

A. Ambulance Services

Name	Address	Phone	Paramedics	
			Yes	No
<i>AMR</i>	<i>455 West Beverly, Tracy Ca. 95376</i>	<i>911</i>		
	<i>209-948-5136</i>		<i>x</i>	
<i>AMR</i>	<i>San Joaquin Base Operation</i>	<i>911</i>	<i>x</i>	
	<i>400 Fresno AVE</i>			

B. Incident Ambulances

Name	Location	Paramedics	
		Yes	No
<i>AMR Tracy Ops</i>	<i>Command Post- Tracy Fire Station 94 - 16502 W. Schulte Road</i>	<i>xx</i>	
	<i>Tracy, CA 209-835-8853</i>		
<i>AMR ALCO</i>	<i>Station 21- Site 300 ALCO Fire Station</i>	<i>xx</i>	

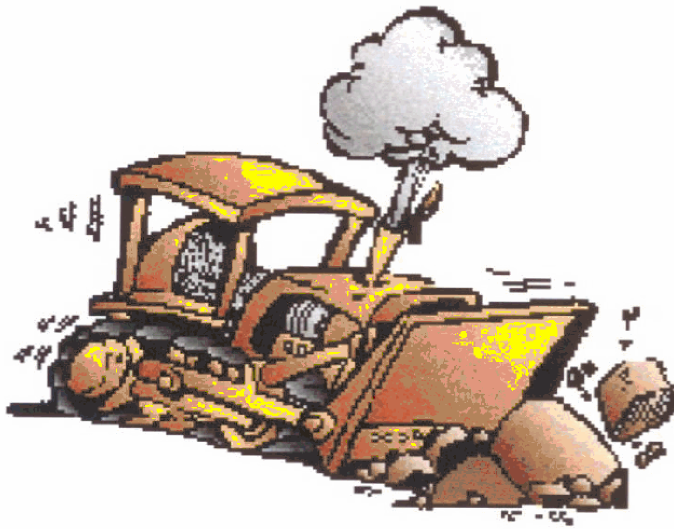
7. Hospitals

Name	Address	Travel Time		Phone	Helipad		Burn Center	
		Air	Grnd		Yes	No	Yes	No
		<i>Sutter Tracy</i>				<i>12</i>		<i>x</i>
<i>Community Hosp</i>	<i>1420 N. Tracy Blvd 209-835-1500</i>							
<i>Kaiser Manteca</i>	<i>1777 West Yosemite Ave</i>		<i>30</i>		<i>x</i>		<i>x</i>	
	<i>209-825-3700</i>							
<i>UC Davis</i>	<i>Davis, CA</i>	<i>20</i>	<i>80</i>		<i>x</i>		<i>x</i>	

8. Medical Emergency Procedures

Provide for Safety of personnel. Provide water and rest periods as appropriate. Provide first aid for injuries and treatment. Notify Immediate supervisor of injury. Determine the seriousness of the injury and provide transport to a safe location. Division and Safety Officer should be notified through Incident Communications. Clear radio traffic from the Command Channel during the emergency. The closest EMS personnel (line EMT or EMTP) will respond to provide triage and treatment. Branch or Division and Safety will coordinate the evacuation off the fireline. Medical will coordinate with Safety on the best location to transfer of care to Incident Ambulance.

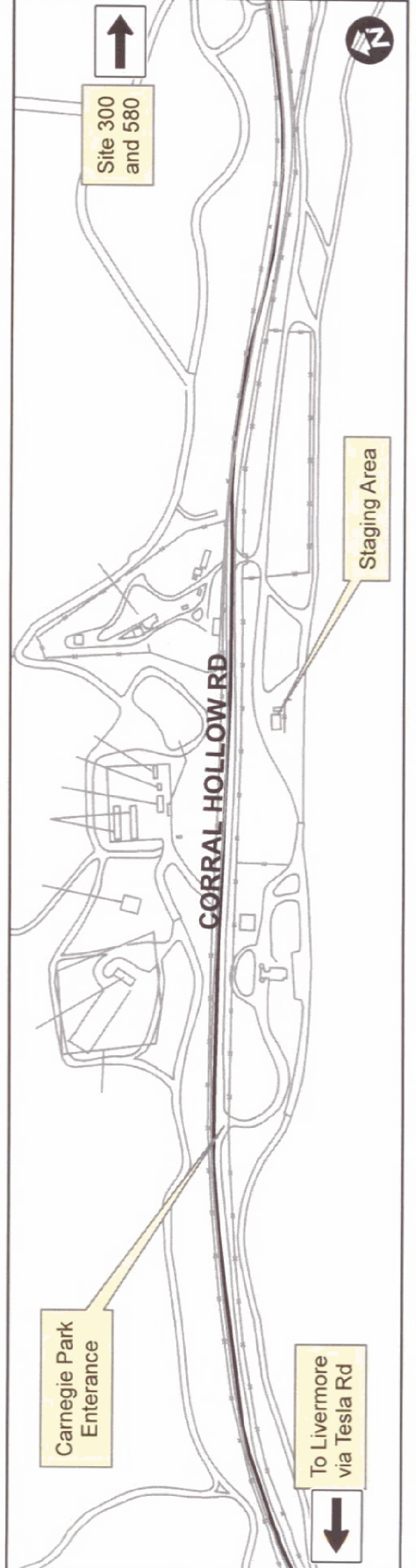
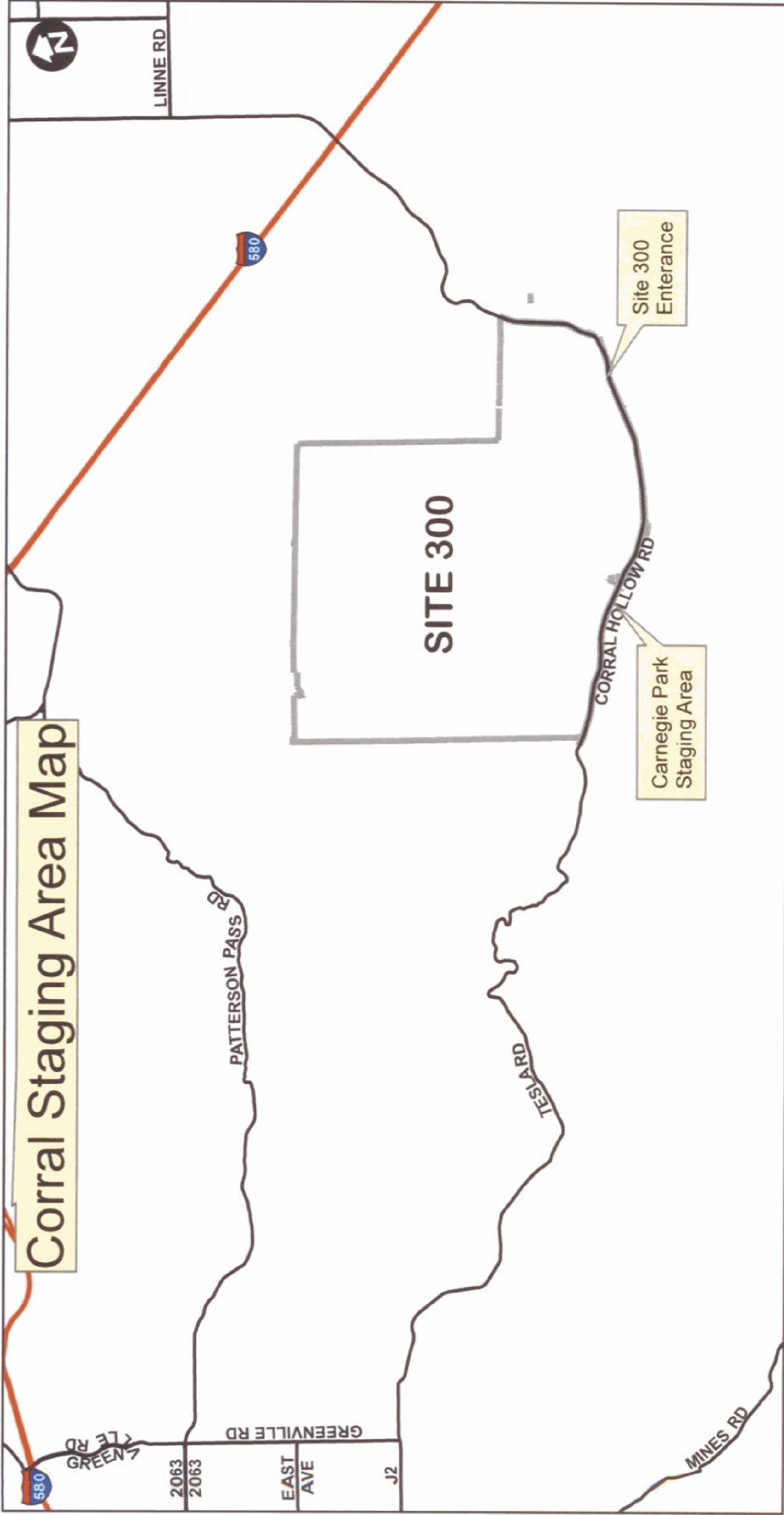
ICS-206 NFES 1331	Prepared by (Medical Unit Leader) <i>B/C Darrell Lee, MEDL</i>	Reviewed by (Safety Officer)
-----------------------------	---	------------------------------



Safety

Message

- **HUGE dozer order for today**
 - Eye contact when approaching operator
 - Never work in front or below
- **Beware of weekend warrior traffic**
 - Carnegie State Park is **CLOSED**
 - One way, narrow roads, steep drop offs
- **Branch II**
 - Aircraft will be painting Pegleg ridge
 - Use LCES on underslung line
- **Tread lightly on Carnegie Ridge above Park**
- **Watch out for rattlesnakes and badger holes**



CORRAL
CA-SCU-3410
AUG 15, 2009
IAP MAP
0600
WGS84

PAUL ANDERSON
AUG 14, 2009
2307 Hours

Legend

- Project
- Target
- Point
- Contour
- Topographic

121°33'W 121°32'W 121°31'W 121°30'W 121°29'W 121°28'W 121°27'W 121°26'W 121°25'W 121°24'W 121°23'W

37°38'N 37°37'N 37°36'N 37°35'N 37°34'N 37°33'N 37°32'N 37°31'N

BRANCH II

Site 300

HOLLOWAY RD

Staging

Div A

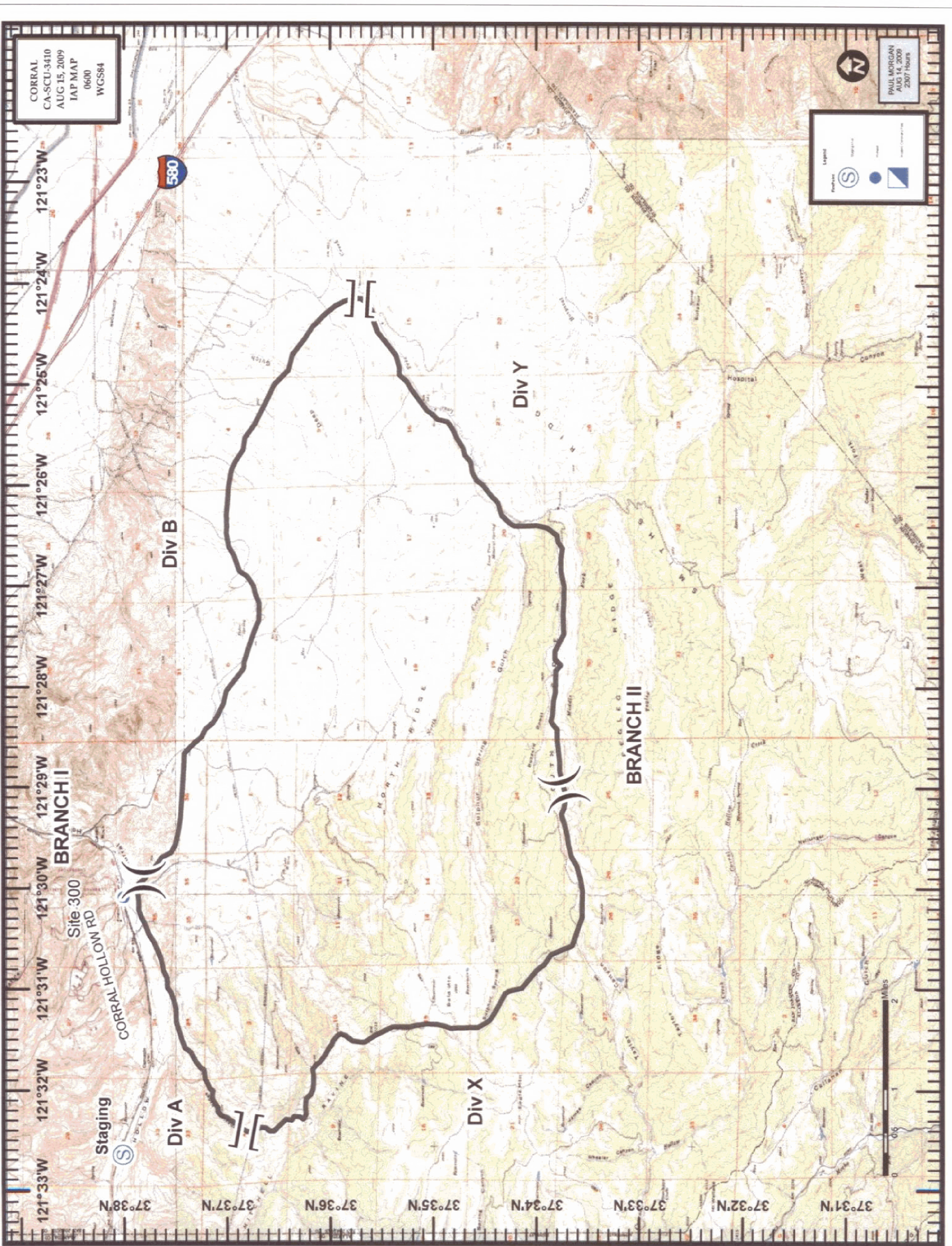
Div B

Div X

Div Y

BRANCH II

0 0.6 1 2
MILES



Map to Base

Alameda County Fairgrounds 4501 Pleasanton Ave. Pleasanton, Ca.



Directions: 580 W to 680 S.
Exit Bernal Ave. Turn right.
Left on Valley Ave.
Proceed on Valley to Alameda County
Fairgrounds entrance at Gate 12.