

ENF Wind Complex - Blacksmith
Georgetown Ranger District
December 3, 2011
IAP 0700



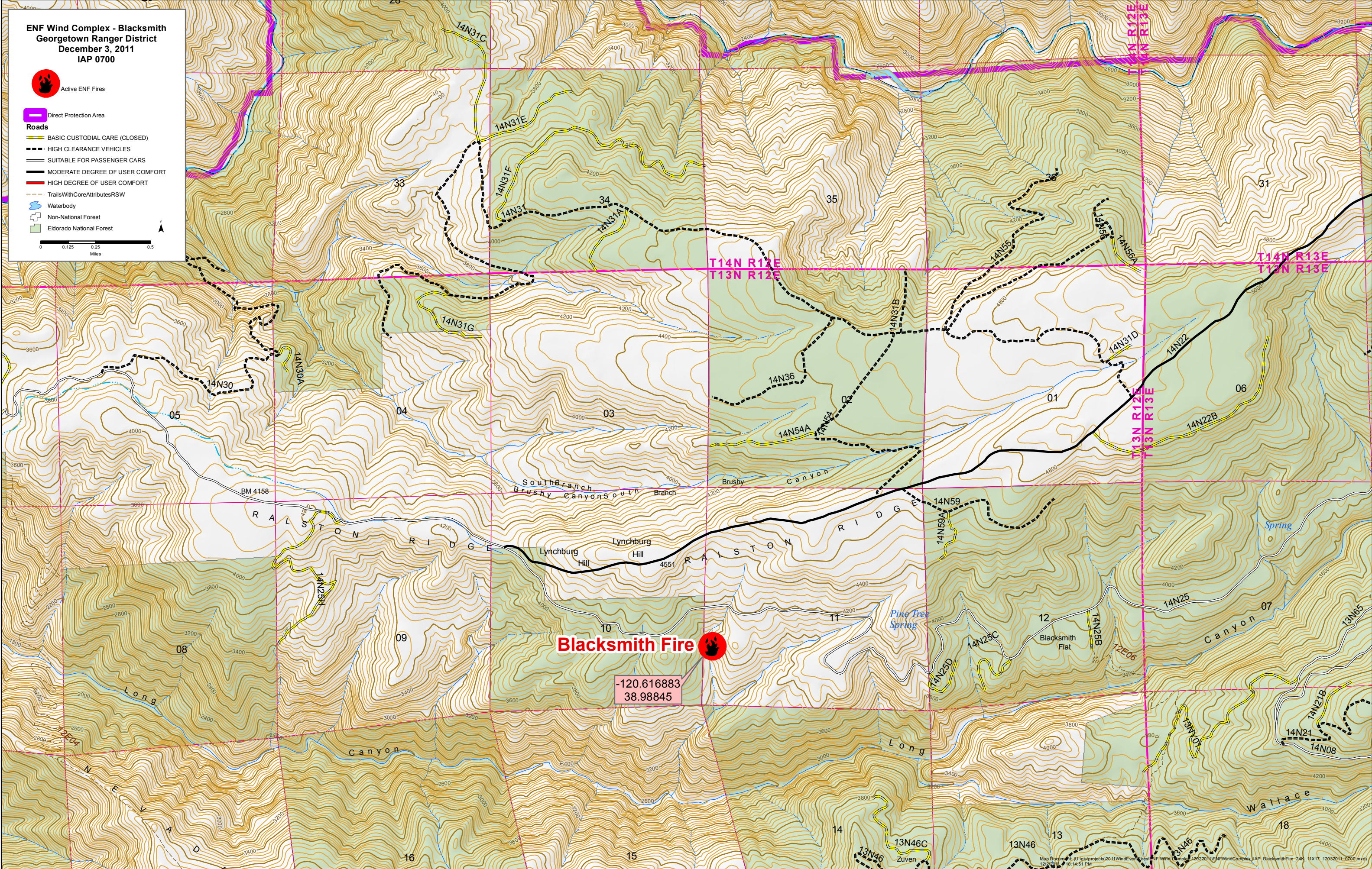
Active ENF Fires



Direct Protection Area

Roads

- BASIC CUSTODIAL CARE (CLOSED)
- HIGH CLEARANCE VEHICLES
- SUITABLE FOR PASSENGER CARS
- MODERATE DEGREE OF USER COMFORT
- HIGH DEGREE OF USER COMFORT
- TrailsWithCoreAttributesRSW
- Waterbody
- Non-National Forest
- Eldorado National Forest



Blacksmith Fire



-120.616883
38.98845