

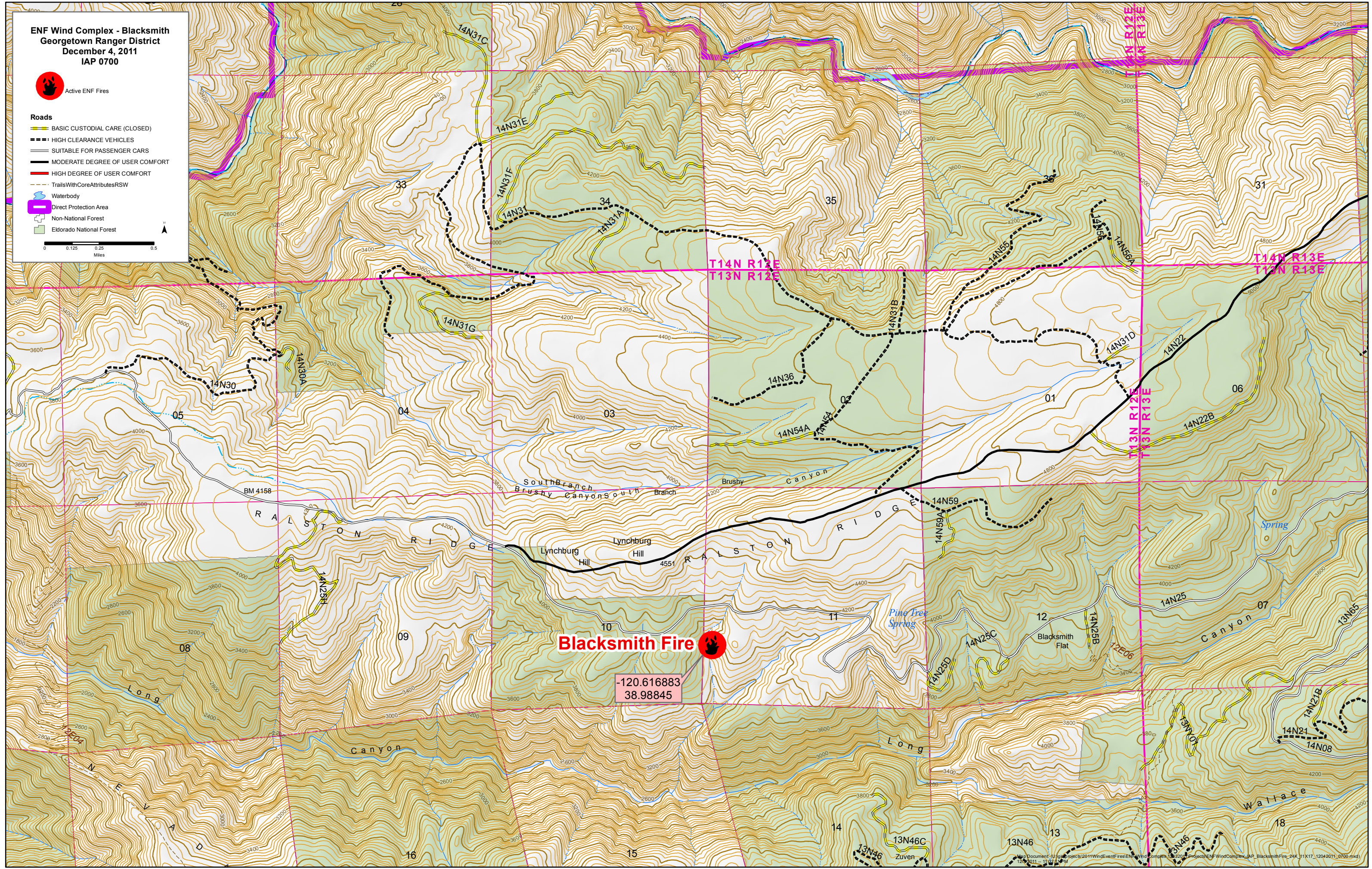
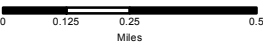
ENF Wind Complex - Blacksmith  
Georgetown Ranger District  
December 4, 2011  
IAP 0700



Active ENF Fires

Roads

- BASIC CUSTODIAL CARE (CLOSED)
- HIGH CLEARANCE VEHICLES
- SUITABLE FOR PASSENGER CARS
- MODERATE DEGREE OF USER COMFORT
- HIGH DEGREE OF USER COMFORT
- TrailsWithCoreAttributesRSW
- Waterbody
- Direct Protection Area
- Non-National Forest
- Eldorado National Forest



Blacksmith Fire



-120.616883  
38.98845