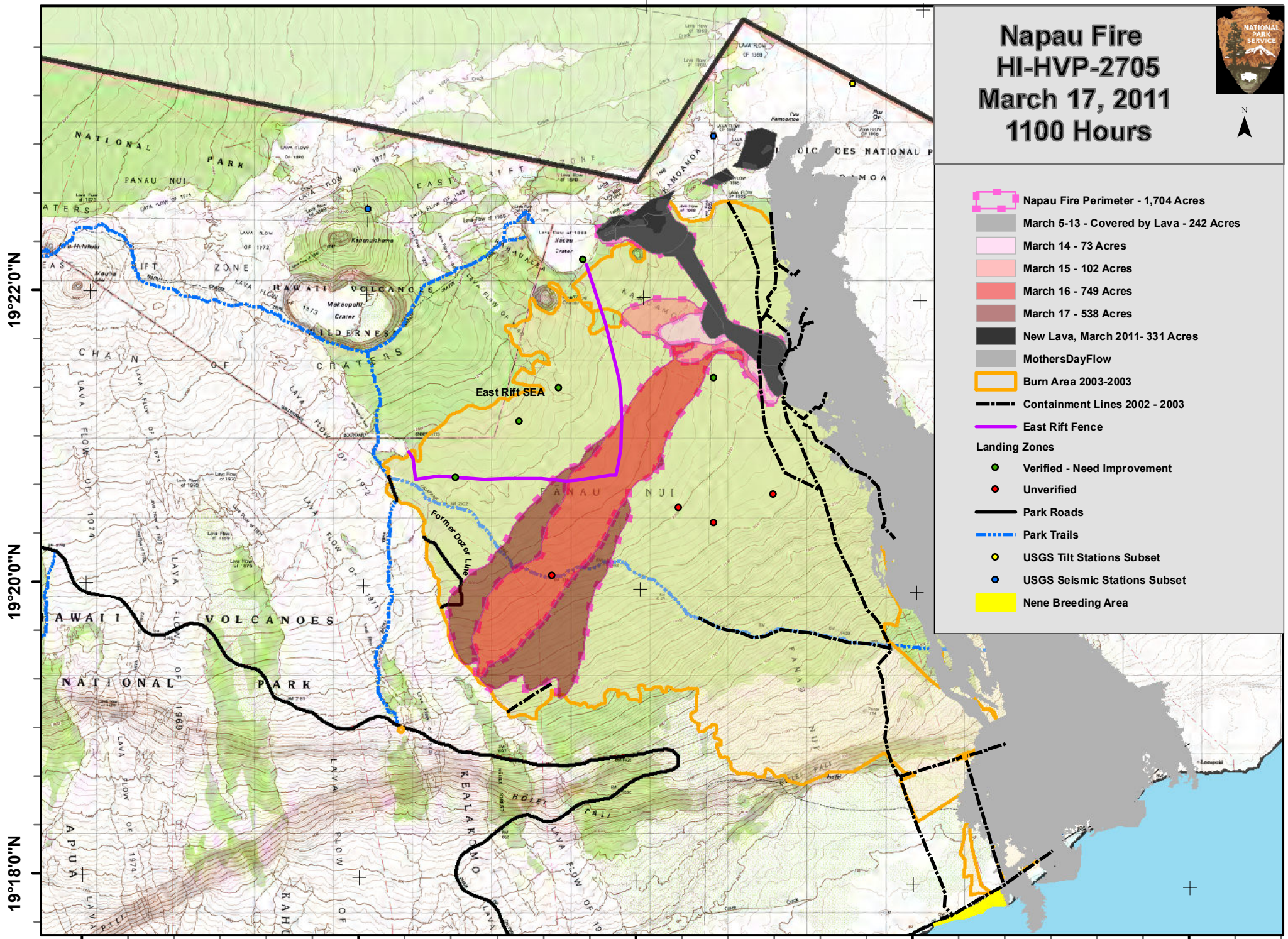




Napau Fire HI-HVP-2705 March 17, 2011 1100 Hours



- Napau Fire Perimeter - 1,704 Acres
- March 5-13 - Covered by Lava - 242 Acres
- March 14 - 73 Acres
- March 15 - 102 Acres
- March 16 - 749 Acres
- March 17 - 538 Acres
- New Lava, March 2011- 331 Acres
- MothersDayFlow
- Burn Area 2003-2003
- Containment Lines 2002 - 2003
- East Rift Fence
- Landing Zones**
- Verified - Need Improvement
- Unverified
- Park Roads
- Park Trails
- USGS Tilt Stations Subset
- USGS Seismic Stations Subset
- Nene Breeding Area

19°22'0"N

19°20'0"N

19°18'0"N

155°12'0"W

155°10'0"W

155°8'0"W

155°6'0"W

155°4'0"W

D.M. Benitez, 03/17/2011
1200 hrs - NAD83 Datum