

July 08, 2012

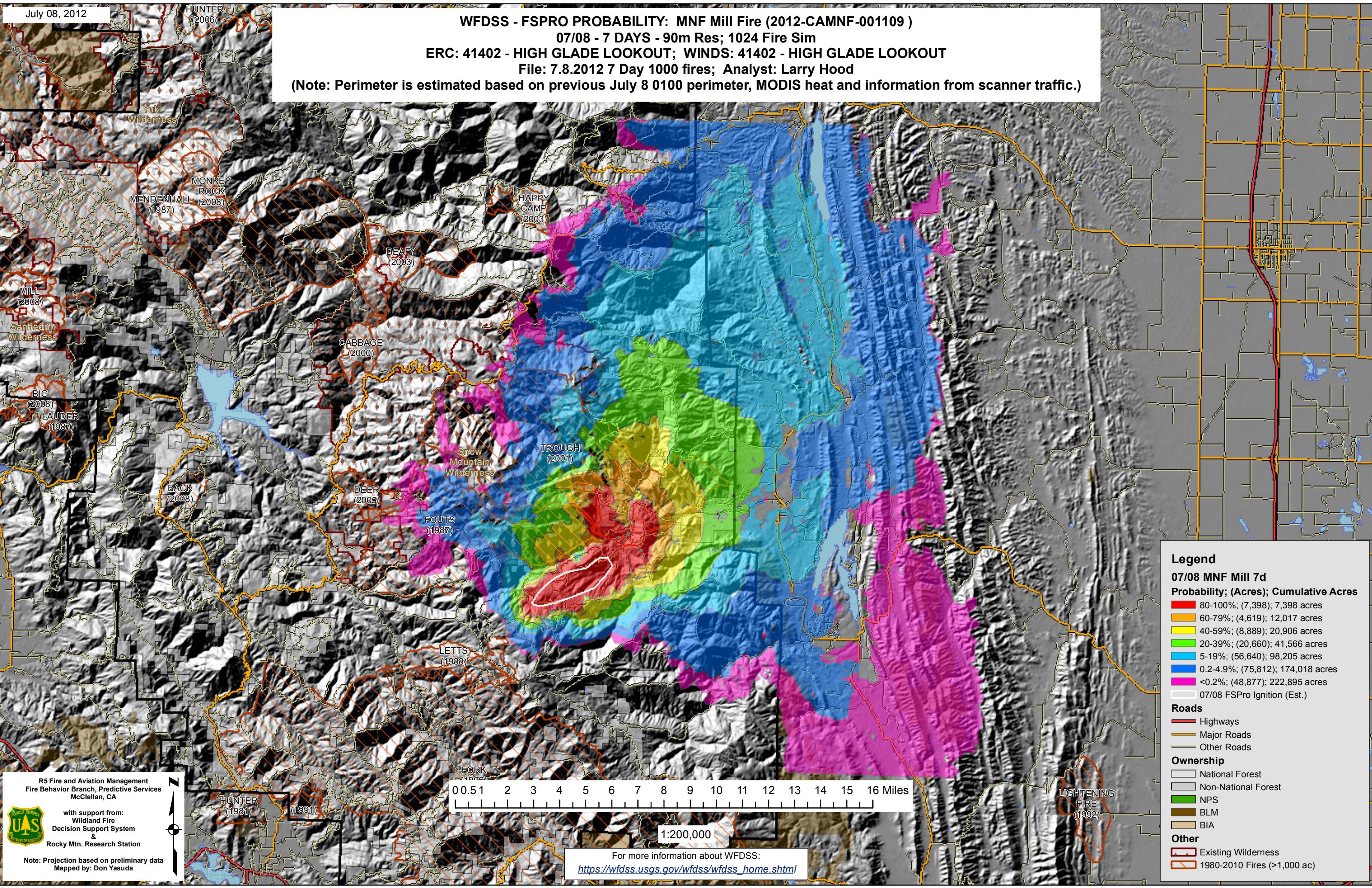
WFDSS - FSPRO PROBABILITY: MNF Mill Fire (2012-CAMNF-001109)

07/08 - 7 DAYS - 90m Res; 1024 Fire Sim

ERC: 41402 - HIGH GLADE LOOKOUT; WINDS: 41402 - HIGH GLADE LOOKOUT

File: 7.8.2012 7 Day 1000 fires; Analyst: Larry Hood

(Note: Perimeter is estimated based on previous July 8 0100 perimeter, MODIS heat and information from scanner traffic.)



Legend

07/08 MNF Mill 7d

Probability; (Acres); Cumulative Acres

- 80-100%; (7,398); 7,398 acres
- 60-79%; (4,619); 12,017 acres
- 40-59%; (8,889); 20,906 acres
- 20-39%; (20,660); 41,566 acres
- 5-19%; (56,640); 98,205 acres
- 0.2-4.9%; (75,812); 174,018 acres
- <0.2%; (48,877); 222,895 acres
- 07/08 FSPRO Ignition (Est.)

Roads

- Highways
- Major Roads
- Other Roads

Ownership

- National Forest
- Non-National Forest
- NPS
- BLM
- BIA

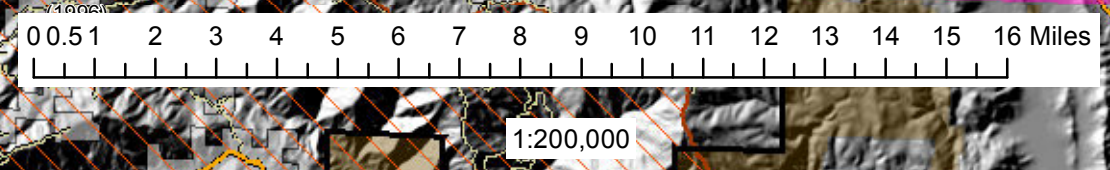
Other

- Existing Wilderness
- 1980-2010 Fires (>1,000 ac)

R5 Fire and Aviation Management
Fire Behavior Branch, Predictive Services
McClellan, CA

with support from:
Wildland Fire
Decision Support System
&
Rocky Mtn. Research Station

Note: Projection based on preliminary data
Mapped by: Don Yasuda



For more information about WFDSS:
https://wfdss.usgs.gov/wfdss/wfdss_home.shtml