

ROBBERS INCIDENT

CA-NEU- 015060



Incident Action Plan
Saturday, July 15, 2012
Operational Period: 0600-0600 hrs.



Fred Flores
Incident Commander Team 5

INCIDENT OBJECTIVES	1. Incident Name Robbers CA NEU 015060	2. Date 7/14/2012	3. Time 2230
4. Operational Period 7/15/12 0600-0600			
5. General Control Objectives for the Incident (include alternatives) Management Objectives : 1. Provide for firefighter safety at all times 2. Protect life, property and resources 3. Recognize and protect historical landmarks 4. Maintain and foster relationships with cooperators and the public Control Objectives : Keep the fire within the following box: East of Gillis Hill North of Transmission Lines West of Forest Hill South of Iowa Hill			
6. Weather Forecast for Period See attached Spot Weather Forecast			
7. General Safety Message Reference the Downhill Fireline Construction Checklist before engaging in downhill line construction. Keep your Safety and the Safety of the crews as a top priority. Remember the basics - 10 & 18's.			
8. Attachments (mark if attached)			
<input checked="" type="checkbox"/> Organization List - ICS 203 <input checked="" type="checkbox"/> Medical Plan - ICS 206 <input type="checkbox"/> (Other) <input checked="" type="checkbox"/> Div. Assignment Lists - ICS 204 <input checked="" type="checkbox"/> Incident Map <input type="checkbox"/> <input checked="" type="checkbox"/> Communications Plan - ICS 205 <input type="checkbox"/> Traffic Plan <input type="checkbox"/>			
9. Prepared by (Planning Section Chief)		10. Approved by (Incident Commander)	
INCIDENT OBJECTIVES	1. Incident Name Robbers CA NEU 015060	2. Date 7/14/2012	3. Time 2230

4. Operational Period

7/15/12

0600-0600

5. General Control Objectives for the Incident (include alternatives)

Management Objectives :

- 1. Provide for firefighter safety at all times
- 2. Protect life, property and resources
- 3. Recognize and protect historical landmarks
- 4. Maintain and foster relationships with cooperators and the public

Control Objectives :

Keep the fire within the following box:

- East of Gillis Hill
- North of Transmission Lines
- West of Forest Hill
- South of Iowa Hill

6. Weather Forecast for Period

See attached Spot Weather Forecast

7. General Safety Message

Reference the Downhill Fireline Construction Checklist before engaging in downhill line construction.
 Keep your Safety and the Safety of the crews as a top priority. Remember the basics - 10 & 18's.

8.	Attachments (mark if attached)
----	---------------------------------------

- | | | |
|---|--|----------------------------------|
| <input checked="" type="checkbox"/> Organization List - ICS 203 | <input checked="" type="checkbox"/> Medical Plan - ICS 206 | <input type="checkbox"/> (Other) |
| <input checked="" type="checkbox"/> Div. Assignment Lists - ICS 204 | <input checked="" type="checkbox"/> Incident Map | <input type="checkbox"/> |
| <input checked="" type="checkbox"/> Communications Plan - ICS 205 | <input type="checkbox"/> Traffic Plan | <input type="checkbox"/> |

9. Prepared by (Planning Section Chief)

10. Approved by (Incident Commander)

ORGANIZATION ASSIGNMENT LIST		
1. Incident Name		
Robbers CA NEU 015060		
2. Date	3. Time	
July 14, 2012	2200	
4. Operational Period		
July 15, 2012 0600-0600		
Position	Name	
5. Incident Commander and Staff		
Incident Commander	Fred Flores	
Deputy	Jeff Brand / Brian Estes	
Safety Officer	Kevin Twohey	
Information Officer	Matt Streck	
Liaison Officer	Ron Myers / Pete Daily	
6. Agency Representative		
Agency	Name	
CHP	Sergeant Kevin Pierce	
PCSO	Ty Conners	
CAL EMA	Gary Humphrey	
PGE	Angie Gibson	
BLM	Jerry Martinez	
Placer County OES	Rod Rodriguez	
National Guard		
7. Planning Section		
Chief	Ron Bravo	
Deputy	Gabe Schultz	
Resources Unit	Gabe Garcia / Linda Green	
Situation Unit	John Lantz	
Documentation Unit	Rebecca Scott	
Demobilization Unit	Shem Hawkins / Patty Hood	
Technical Specialists		
Human Resources		
Training	Randy Titus	
GISS	Dan Dresselhaus / Jack Harvey	
Fire Behavior	Scott Jones	
Meteorologist	Jason Clapp	
8. Logistics Section		
Chief	Jim Crawford	
Deputy	Frank Riley	
Supply Unit	Chris Richins	
Facilities Unit	Randy Morrhead	
Ground Support Unit	Joe Roberson	
Communications Unit	Brian Kornegay	
Medical Unit	Dave Latham	
Security Unit		
Food Unit		

9. Operations Section		
Chief	Barry Biermann(Day)/Tod Patten(Night)	
Deputy	Mike Shorrock / Chris Desena	
a. Branch I- Division/Groups		
Branch Director	David Hawks	
Deputy		
Division/Group	A/C	Brad Albertazzi
Division/Group	Y	David Davis
Division/Group	Z	Eric Ayers
Division/Group		
Division/Group		
b. Branch II - Division/Groups		
Branch Director	Kurt Williges	
Deputy		
Division/Group		
Division/Group		
Division/Group		
Division/Group		
c. Branch III - Division/Groups		
Branch Director	Eric Kurtz	
Deputy	Jake Sjolund	
Division/Group	E	Mark Mondragon
Division/Group	G	Michael Weidner
Division/Group	P	Jim Ferguson / Mark Brooks (T)
Division/Group	R	Jeffrey Johnson / John Pearl (T)
Division/Group	X	Pat Benninghoven / Kevin Dixon
d. Staging		
STAM	FORESTHILL	Josh Kart / Ryan Jay (T)
STAM	WEIMAR	Mike Montano
e. Air Operations Branch		
Air Operations Branch Director	Scott Packwood	
Air Attack Supervisor		
Air Support Supervisor	Kurt Dernede / Lane Caldwell	
Helicopter Coordinator	Aaron Burrough	
Air Tanker Coordinator		
10. Finance Section		
Chief	Steve Hawks	
Deputy		
Time Unit	Paul Abe	
Procurement Unit	Mike Weber	
Compensation/Claims Unit	Skip Sannar	
Cost Unit	Darren Dow	
Prepared by (Resource Unit Leader)		
Gabe Garcia		



FIRE WEATHER FORECAST

FORECAST: 2

NAME OF FIRE: Robbers

PREDICTION FOR: Sunday

UNIT: Cal Fire Nevada-Yuba-Placer

SHIFT DATE: July 15, 2012

TIME AND DATE

Jason Clapp

FORECAST ISSUED: 2000 PDT, July 14

Incident Meteorologist

WEATHER DISCUSSION:

Area sandwiched between Pacific Northwest upper low and weak trough over SoCal. This will create generally light ridge winds...terrain winds dominant. Little change in temperature and RH today. Monday and Tuesday upper low moves south over Oregon/Northwestern California and generates stronger south-southwest ridge winds.

WEATHER FORECAST FOR SUNDAY:

WEATHER: Sunny with smoke in the morning. Upper trough moves to east, weakening the winds.

TEMPERATURES: 85-92 (Little Change).

HUMIDITY: 18-23% (Little Change).

20 FT WINDS: Ridgetop – South-southwest 5-7 mph.

Slope/Valley – Upslope/Upcanyon 3-7 with gusts 10-12 mph in favored canyons (eddying in American and Shirttail Canyon).

LAL: 1.

STABILITY/INVERSION: 1000-1200...latest in sheltered/deep canyons.

WEATHER FORECAST FOR TONIGHT AFTER SUNSET:

WEATHER: Smoky with inversions setting up after sunset. Moderate to good RH recovery depending on elevation.

TEMPERATURES: 55-60 valleys...62-66 mid/upper slopes. (Little Change)

HUMIDITY: 70-80% Valley...40-50% Mid/Upper slope. (Little Change)

20 FT WINDS: Ridgetop – East-southeast 2-4 mph with gusts to 7 mph toward sunrise.

Slope/Valley - Downslope/Downcanyon 3-5 mph.

LAL: 1

STABILITY/INVERSION: Inversions set up around sunset.

WEATHER FORECAST FOR MONDAY:

WEATHER: Sunny and cooler with smoke in the morning. Upper trough moves south increasing ridge winds.

TEMPERATURES: 82-88 (Down 3-4).

HUMIDITY: 21-26% (Up 2-3).

20 FT WINDS: Ridgetop – South-southwest 6-9 mph with gusts 14-18 mph.

Slope/Valley – Upslope/Upcanyon 6-8 with gusts to 12-14 mph in aligned canyons (eddying in American and Shirttail Canyon).

LAL: 1.

STABILITY/INVERSION: 1000-1200...latest in sheltered/deep canyons.

EXTENDED OUTLOOK FOR TUESDAY THROUGH THURSDAY:

An upper low continues to drift south over northwest California on Tuesday which will keep increased ridge winds more from the south with cooler temperatures/higher RH. The Low weakens and moves northeast and winds will decrease in the afternoon. Southwest flow dominates Thursday with warming temperatures. Moisture from remnants of Hurricane Fabio may flow over the region and generate some cloudiness. Only a slight chance of thunderstorms.



FIRE WEATHER FORECAST

FORECAST: 2

NAME OF FIRE: Robbers

PREDICTION FOR: Sunday

UNIT: Cal Fire Nevada-Yuba-Placer

SHIFT DATE: July 15, 2012

TIME AND DATE

Jason Clapp

FORECAST ISSUED: 2000 PDT, July 14

Incident Meteorologist

WEATHER DISCUSSION:

Area sandwiched between Pacific Northwest upper low and weak trough over SoCal. This will create generally light ridge winds...terrain winds dominant. Little change in temperature and RH today. Monday and Tuesday upper low moves south over Oregon/Northwestern California and generates stronger south-southwest ridge winds.

WEATHER FORECAST FOR SUNDAY:

WEATHER: Sunny with smoke in the morning. Upper trough moves to east, weakening the winds.

TEMPERATURES: 85-92 (Little Change).

HUMIDITY: 18-23% (Little Change).

20 FT WINDS: Ridgetop – South-southwest 5-7 mph.

Slope/Valley – Upslope/Upcanyon 3-7 with gusts 10-12 mph in favored canyons (eddying in American and Shirttail Canyon).

LAL: 1.

STABILITY/INVERSION: 1000-1200...latest in sheltered/deep canyons.

WEATHER FORECAST FOR TONIGHT AFTER SUNSET:

WEATHER: Smoky with inversions setting up after sunset. Moderate to good RH recovery depending on elevation.

TEMPERATURES: 55-60 valleys...62-66 mid/upper slopes. (Little Change)

HUMIDITY: 70-80% Valley...40-50% Mid/Upper slope. (Little Change)

20 FT WINDS: Ridgetop – East-southeast 2-4 mph with gusts to 7 mph toward sunrise.

Slope/Valley - Downslope/Downcanyon 3-5 mph.

LAL: 1

STABILITY/INVERSION: Inversions set up around sunset.

WEATHER FORECAST FOR MONDAY:

WEATHER: Sunny and cooler with smoke in the morning. Upper trough moves south increasing ridge winds.

TEMPERATURES: 82-88 (Down 3-4).

HUMIDITY: 21-26% (Up 2-3).

20 FT WINDS: Ridgetop – South-southwest 6-9 mph with gusts 14-18 mph.

Slope/Valley – Upslope/Upcanyon 6-8 with gusts to 12-14 mph in aligned canyons (eddying in American and Shirttail Canyon).

LAL: 1.

STABILITY/INVERSION: 1000-1200...latest in sheltered/deep canyons.

EXTENDED OUTLOOK FOR TUESDAY THROUGH THURSDAY :

An upper low continues to drift south over northwest California on Tuesday which will keep increased ridge winds more from the south with cooler temperatures/higher RH. The Low weakens and moves northeast and winds will decrease in the afternoon. Southwest flow dominates Thursday with warming temperatures. Moisture from remnants of Hurricane Fabio may flow over the region and generate some cloudiness. Only a slight chance of thunderstorms.

FIRE BEHAVIOR FORECAST

FORECAST NUMBER: # 3	TYPE OF FIRE: Wildland
FIRE NAME: ROBBERS	OPERATIONAL PERIOD: 07/15/2012 (0600-0600)
DATE ISSUED: 07/14/2012	TIME ISSUED: 2000
UNIT: NEU	SIGNED: _____
	Typed/printed: Scott Jones

INPUTS

WEATHER SUMMARY:

Sunny with smoke in the morning. Upper trough moving east should weaken winds.

MAX temp 85-92 MIN RH 18-23%

Wind (20 ft) Ridgetop – S SW 5-7 mph -- Slope / Valley... Upslope / Up-canyon 3-7 with gusts 10-12 mph in favored canyons.

Tonight after sunset

Smoky inversions, moderate to good RH recovery – Temp 55-66, RH 40-50% mid/upper slope, RH 70-80% valley: 20ft winds Ridgetop East-Southeast 2-4 gusts 7 mph, Down slope/canyon 3-5 mph.

OUTPUTS

FIRE BEHAVIOR

GENERAL:

Fire is being burning in a confluence of multiple steep drainages. Fuel coverage consists of high load timber shrub and a high load shrub group. In canyon drainages expect the fire to reach higher levels of intensity inhibiting direct attack. When fire is in optimal alignment with wind and slope extreme fire behavior with spotting should be anticipated. Current weather would indicate an opportunity for a lowered level of fire intensity, however suppression actions need to address access and equipment availability.

Fire Behavior for Optimal Alignment

Fuel Type	ROS (RATE) FWD	ROS Flank	ROS Backing	FL (Ft)	P(i)G
Timber (FM10)	8-12 ft/min	3-6 ft/min	0-2	4-7	76%
Brush (SH 7)	40-50 ft/min	3-5 ft/min	0-3 ft/min	4-14	76%

SPECIFIC:

Branch I: Fuel and topography dominate fire growth. Morning upslope winds have caused flare-ups to bump control lines. In drainages, expect extended periods of low to moderate activity to become high to extreme in the afternoon as temperatures and winds reach peak levels. Fire whirls and spot fires should be expected during any fire runs. There is a structure defense consideration due to homes in the area.

Branch II: Contingency, there is a shaded fuel break along the Gillis Hill Ridge that backs up to the 2001 Ponderosa Fire. If there is a weather condition that could generate a start from this incident expect the lighter fuels to produce a higher level of fire behavior.

Branch III: Morning upslope winds can hinder early suppression efforts. Have a plan that is flexible, slopovers and spot fires coupled with difficult access continues to hinder suppression efforts. This area will have more isolated areas that will be in optimal alignment that can generate extreme fire behavior.

AIR OPERATIONS:

Morning inversion may hold smoke in the area limiting early flight operations. Once the inversion lifts there are no expected weather limitations however heavy smoke production could inhibit visibility.

SAFETY

Steep Terrain – be aware of rolling materials that will ignite fuels below you.

Maintain situational awareness, slope and wind alignment may be influenced by wind direction changes and eddies of spur ridges.

Be Safe – God Bless

DIVISION ASSIGNMENT LIST				1. Branch I		2. Division/Group A/C			
3. Incident Name Robbers CA-NEU-015060				4. Operational Period Date: 7-15/16-2012 Time: 0600-0600 Hrs.					
5. Operations Personnel									
Operations Chief		Barry Bierman Tod Patten (Night)		Division/Group Supervisor		Brad Albertazzi			
Branch Director		David Hawks		Air Attack Supervisor No.					
6. Resources Assigned this Period									
Strike Team/Task Force/ Resource Designator	Briefing	Leader	Number Persons	Trans. Needed	Report Location	On Shift	Arrival Time	Off Shift	
STC LNU 9130C		Baker	16		DP 20		0700		
STG TCU 9481G		Silva	36		DP 20		0700		
DOZ E123 BASQO		Anchordogy	2		DP 20		0700		
W/T E-89 All Agency		Hill	2		DP 20		0700		
W/T E-134		Belleci	2		DP 20		0700		
FOBS		Salas	1		DP 20		0700		
SOFL		McAlister	1		DP 20		0700		
7. Control Operations Maintain existing lines. Construct contingencies as necessary. Mop up 150' in.									
8. Special Instructions All firing must have prior approval by operations. Establish anchor points. Ensure constructed line is tied in. No heavy equipment allowed down Yankee Jims Rd. Access to fire will be Foresthill Rd→Sugar Pine Rd→Big Dipper Rd→Kings Hill SOFL McAlister will be assigned to DIVS C, A, Z									
9. Division/Group Communication Summary									
Function	Frequency	System	Channel	Function	Frequency	System	Channel		
Command	RX 168.4750N TX 173.1825N		NIFC C6 Tone 6	Logistics					
Tactical Div/Group	151.1750N		CDF TAC 3	Air to Ground	159.3450N		CDF TAC 18		
Prepared by (Resource Unit Ldr.) Gabe Garcia			Approved by (Planning Sect. Ch.) Ron Bravo/Gabe Schultz			Date 07-14-2012		Time 2200	

DIVISION ASSIGNMENT LIST			1. Branch I		2. Division/Group Y			
3. Incident Name Robbers CA-NEU-015060			4. Operational Period Date: 7-15/16-2012 Time: 0600-0600 Hrs.					
5. Operations Personnel								
Operations Chief		Barry Bierman Tod Patten (Night)		Division/Group Supervisor		David Davis		
Branch Director		David Hawks		Air Attack Supervisor No.				
6. Resources Assigned this Period								
Strike Team/Task Force/ Resource Designator	Briefing	Leader	Number Persons	Trans. Needed	Reporting Location	On Shift	Arrival Time	Off Shift
STC LMU 9225C		Williams	19		DP 15		0700	
STC TCU 9441C		Casci	17		DP 15		0700	
STC XSO 2351C		Ryder	17		DP 15		0700	
STG HUU 9126G		Esteves	33		DP 15		0700	
STG TUU 9473G		Villani	29		DP 15		0700	
STL LNU 9148L		Benguerel	5		DP 15		0700	
STL MEU 9116L		Dennett	5		DP15		0700	
STL LNU 9149L					DP15		0700	
W/T E-135 OES WT42		Ross	2		DP 15		0700	
W/T E-138		Lopes	2		DP 15		0700	
SOFL		Rinella	1		DP 15		0700	
7. Control Operations Maintain existing lines. Construct line to tie in with Division X.								
8. Special Instructions All firing must have prior approval by operations. Establish anchor points. Ensure constructed line is tied in. No heavy equipment allowed down Yankee Jims Rd. Access to fire will be Foresthill Rd→Sugar Pine Rd→Big Dipper Rd→Kings Hill								
9. Division/Group Communication Summary								
Function	Frequency	System	Channel	Function	Frequency	System	Channel	
Command	RX 168.4750N TX 173.8125N		NIFC C6 Tone 6	Logistics				
Tactical Div/Group	154.4525N		VTAC 12	Air to Ground	159.3450N		CDF TAC 18	
Prepared by (Resource Unit Ldr.) Gabe Garcia		Approved by (Planning Sect. Ch.) Ron Bravo/Gabe Schultz			Date 07-14-2012		Time 2200	

DIVISION ASSIGNMENT LIST			1. Branch I		2. Division/Group Z			
3. Incident Name Robbers CA-NEU-015060			4. Operational Period Date: 7-15/16-2012 Time: 0600-0600 Hrs.					
5. Operations Personnel								
Operations Chief		Barry Bierman Tod Patten (Night)		Division/Group Supervisor		Eric Ayers		
Branch Director		David Hawks		Air Attack Supervisor No.				
6. Resources Assigned this Period								
Strike Team/Task Force/ Resource Designator	Briefing	Leader	Number Persons	Trans. Needed	Reporting Locations	On Shift	Arrival Time	Off Shift
STC LNU 9131C		Fletcher	18		1 st STC to DP 20		0700	
STC XTO 4250C		Moneal	16		DP 15		0700	
STG LMU 9224G		Grendahl	35		DP 15		0700	
W/T E-48 Gomes		Gomes	2		1 st WT to DP 20		0700	
W/T E-90 All Agency		Hill	2		DP 15		0700	
SOFL		McAlister	1		DP 15		0700	
7. Control Operations Maintain existing lines. Construct contingencies as necessary. Mop up 150' in.								
8. Special Instructions All firing must have prior approval by operations Establish anchor points and ensure constructed line is tied in No heavy equipment allowed down Yankee Jims Rd. Access to fire will be Foresthill Rd→Sugar Pine Rd→Big Dipper Rd→Kings Hill SOFL McAlister will be assigned to DIVS C, A, Z								
9. Division/Group Communication Summary								
Function	Frequency	System	Channel	Function	Frequency	System	Channel	
Command	Rx 168.4750N Tx 173.8125N		NIFC C6 Tone 6	Logistics				
Tactical Div/Group	151.1375		VTAC 11	Air to Ground	159.3450N		CDF TAC 18	
Prepared by (Resource Unit Ldr.) Gabe Garcia		Approved by (Planning Sect. Ch.) Ron Bravo/Gabe Schultz			Date 07-14-2012		Time 2200	

DIVISION ASSIGNMENT LIST				1. Branch II		2. Division/Group		
3. Incident Name Robbers CA-NEU-015060				4. Operational Period Date: 7-15/16-2012 Time: 0600-0600 Hrs.				
5. Operations Personnel								
Operations Chief		Barry Bierman Tod Patten (Night)		Division/Group Supervisor				
Branch Director		Kurt Williges		Air Attack Supervisor No.				
6. Resources Assigned this Period								
Strike Team/Task Force/ Resource Designator	Briefing	Leader	Number Persons	Trans. Needed	Report Location	On Shift	Arrival Time	Off Shift
STC XSJ 4180C		Ingrum	17		DP 10		0700	
STG LMU 9226G		Harrison	35		DP 10		0700	
DOZ E-22					DP 10		0700	
DOZ E-66					DP 10		0700	
DOZ E-122 Anchordogy		Parts	2		DP 10		0700	
DOZB		Keene	1		DP 10		0700	
W/T E-32 Gassaway		Gassaway	1		DP 10		0700	
7. Control Operations Continue to improve Gillis Hill Fuel Break Prepare contingencies for ridge line with anchors to river in the event of fire jumping river								
8. Special Instructions No heavy equipment allowed down Yankee Jims Rd. Access to fire will be Foresthill Rd→Sugar Pine Rd→Big Dipper Rd→Kings Hill								
9. Division/Group Communication Summary								
Function	Frequency	System	Channel	Function	Frequency	System	Channel	
Command	RX 168.4750N TX 173.8125N		NIFC C6 Tone 6	Logistics				
Tactical Div/Group	159.4725N		VTAC 14	Air to Ground	159.3450N		CDF TAC 18	
Prepared by (Resource Unit Ldr.) Gabe Garcia		Approved by (Planning Sect. Ch.) Ron Bravo/Gabe Schultz			Date 07-14-2012		Time 2200	

DIVISION ASSIGNMENT LIST				1. Branch III		2. Division/Group E		
3. Incident Name Robbers CA-NEU-015060				4. Operational Period Date: 7-15/16-2012 Time: 0600-0600 Hrs.				
5. Operations Personnel								
Operations Chief		Barry Bierman Tod Patten (Night)		Division/Group Supervisor		Mark Mondragon		
Branch Director		Eric Kurtz Jake Sjolund (T)		Air Attack Supervisor No.				
6. Resources Assigned this Period								
Strike Team/Task Force/ Resource Designator	Briefing	Leader	Number Persons	Trans. Needed	Report Location	On Shift	Arrival Time	Off Shift
STG SHU 9240G		Miles	35		DP 3		0700	
STG NEU 9233G		Evers	33		DP3		0700	
DOZ NEU 2340		Adams	2		DP3		0700	
DOZ E-65 Volcano		Gordon	2		DP3		0700	
SOFL		Margiott	1		DP3		0700	
7. Control Operations Construct line South to American River Drainage Improve existing roads and trail to river								
8. Special Instructions All firing must have prior approval by operations. Establish anchor points. Ensure constructed line is tied in. No heavy equipment allowed down Yankee Jims Rd. Access to fire will be Foresthill Rd→Sugar Pine Rd→Big Dipper Rd→Kings Hill SOFL Margiott will be assigned to DIVS G, E								
9. Division/Group Communication Summary								
Function	Frequency	System	Channel	Function	Frequency	System	Channel	
Command	RX 168.4750N TX 173.8125N		NIFC C6 Tone 6	Logistics				
Tactical Div/Group	154.2950N		VFIRE 23	Air to Ground	159.3450N		CDF TAC 18	
Prepared by (Resource Unit Ldr.) Gabe Garcia		Approved by (Planning Sect. Ch.) Ron Bravo/Gabe Schultz			Date 07-14-2012		Time 2200	

DIVISION ASSIGNMENT LIST				1. Branch III		2. Division/Group G				
3. Incident Name Robbers CA-NEU-015060				4. Operational Period Date: 7-15/16-2012 Time: 0600-0600 Hrs.						
5. Operations Personnel										
Operations Chief		Barry Bierman Tod Patten (Night)			Division/Group Supervisor		Michael Weidner			
Branch Director		Eric Kurtz Jake Sjolund (T)			Air Attack Supervisor No.					
6. Resources Assigned this Period										
Strike Team/Task Force/ Resource Designator		Briefing	Leader	Number Persons	Trans. Needed	Report Location		On Shift	Arrival Time	Off Shift
CRW NEU WAR 5				16		DP-6			0700	
CRW TNF American River IHC			Leyba	19		DP-6			0700	
DOZ NEU 2342				2		DP-6			0700	
DOZ E-64				2		DP-6			0700	
DOZB			Gonzalez	1		DP-6			0700	
SOFL			Margiott	1		DP-3			0700	
7. Control Operations Construct line North from Indian Creek to Diamond Ranch then SW on Iowa Hill Rd Improve existing road system on ridge line										
8. Special Instructions All firing must have prior approval by operations. Establish anchor points. Ensure constructed line is tied in. No heavy equipment allowed down Yankee Jims Rd. Access to fire will be Foresthill Rd→Sugar Pine Rd→Big Dipper Rd→Kings Hill SOFL Margiott will be assigned to DIVS G, E										
9. Division/Group Communication Summary										
Function	Frequency	System	Channel	Function	Frequency	System	Channel			
Command	RX 168.4750N TX 173.8125N		NIFC C6 Tone 6	Logistics						
Tactical Div/Group	154.2725N		VFIRE 24	Air to Ground	159.3450N		CDF TAC 18			
Prepared by (Resource Unit Ldr.) Gabe Garcia			Approved by (Planning Sect. Ch.) Ron Bravo/Gabe Schultz			Date 07-14-2012		Time 2200		

DIVISION ASSIGNMENT LIST				1. Branch III		2. Division/Group P			
3. Incident Name Robbers CA-NEU-015060				4. Operational Period Date: 7-15/16-2012 Time: 0600-0600 Hrs.					
5. Operations Personnel									
Operations Chief		Barry Bierman Tod Patten (Night)		Division/Group Supervisor		Jim Ferguson / Mark Brooks (T)			
Branch Director		Eric Kurtz Jake Sjolund (T)		Air Attack Supervisor No.					
6. Resources Assigned this Period									
Strike Team/Task Force/ Resource Designator	Briefing	Leader	Number Persons	Trans. Needed	Report Location	On Shift	Arrival Time	Off Shift	
STC LNU 9147C		Lawson	18		DP 7		0700		
STC XCA 4051C		Mullins	18		DP 7		0700		
STG MEU 9115G		Taglio	33		DP 7		0700		
STG FKU 9475G		Quillin	31		DP 7		0700		
STG TCU 9476G		Kassik	31		DP 7		0700		
*T/F ROBBERS #1-L		Declair	5		DP 7		0700		
DOZ E-6		Ridge	2		DP 7		0700		
DOZ E-121					DP 7		0700		
W/T E-24					DP 7		0700		
DOZB		Russell	1		DP 7		0700		
**SOFR		Godden	1		DP 7		0700		
**SOFR		Stephens	1		DP 7		0700		
7. Control Operations Continue line construction and holding action along salvation drainage. Work on contingency line north to Diamond Heart Ranch.									
8. Special Instructions All firing must have prior approval by operations. Establish anchor points. Ensure constructed line is tied in. No heavy equipment allowed down Yankee Jim's Rd, access to fire will be Foresthill Rd → Sugar Pine Rd → Big Dipper Rd → Kings Hill Rd. *T/F Robbers comprised of DOZ SHU 2442, DOZ SKU 2640, and DZT SHU 2442 **SOFR Godden and Stephens will be assigned to Divisions P and R.									
9. Division/Group Communication Summary									
Function	Frequency	System	Channel	Function	Frequency	System	Channel		
Command	RX 168.4750N TX 173.8125N		NIFC C6 Tone 6	Logistics					
Tactical Div/Group	154.2650N		VFIRE 22	Air to Ground	159.3450N		CDF TAC 18		
Prepared by (Resource Unit Ldr.) Gabe Garcia		Approved by (Planning Sect. Ch.) Ron Bravo/Gabe Schultz			Date 07-14-2012		Time 2200		

DIVISION ASSIGNMENT LIST				1. Branch III		2. Division/Group R			
3. Incident Name Robbers CA-NEU-015060				4. Operational Period Date: 7-15/16-2012 Time: 0600-0600 Hrs.					
5. Operations Personnel									
Operations Chief		Barry Bierman Tod Patten (Night)		Division/Group Supervisor		Jeffrey Johnson / John Pearl (T)			
Branch Director		Eric Kurtz Jake Sjolund (T)		Air Attack Supervisor No.					
6. Resources Assigned this Period									
Strike Team/Task Force/ Resource Designator	Briefing	Leader	Number Persons	Trans. Needed	Report Location	On Shift	Arrival Time	Off Shift	
STC AEU 9271C			16		DP 7		0700		
STC XCC 2040C		Gibson	21		DP 7		0700		
STG AEU 9274G		Neal	35		DP 7		0700		
STL MMU 9428L		Daly	6		DP 7		0700		
W/T E-33 Spitfire		Graham	1		DP 7		0700		
*SOFR		Godden	1		DP 7		0700		
*SOFR		Stephens	1		DP 7		0700		
7. Control Operations Construct line and hold south on Kink Hill Rd. from Shirt Tail Rd. to Division P.									
8. Special Instructions All firing must have prior approval by operations. Establish anchor points. Ensure constructed line is tied in. No heavy equipment allowed down Yankee Jim's Rd, access to fire will be Foresthill Rd → Sugar Pine Rd → Big Dipper Rd → Kings Hill Rd *SOFR Godden and Stephens will be assigned to Divisions P and R.									
9. Division/Group Communication Summary									
Function	Frequency	System	Channel	Function	Frequency	System	Channel		
Command	RX 168.4750N TX 173.8125N		NIFC C6 Tone 6	Logistics					
Tactical Div/Group	151.3700N		CDF TAC 8	Air to Ground	159.3450N		CDF TAC 18		
Prepared by (Resource Unit Ldr.) Gabe Garcia			Approved by (Planning Sect. Ch.) Ron Bravo/Gabe Schultz			Date 07-14-2012		Time 2200	

DIVISION ASSIGNMENT LIST				1. Branch III		2. Division/Group X				
3. Incident Name Robbers CA-NEU-015060				4. Operational Period Date: 7-15/16-2012 Time: 0600-0600 Hrs.						
5. Operations Personnel										
Operations Chief		Barry Bierman Tod Patten (Night)		Division/Group Supervisor		Pat Benninghoven Kevin Dixon (T)				
Branch Director		Eric Kurtz Jake Sjolund (T)		Air Attack Supervisor No.						
6. Resources Assigned this Period										
Strike Team/Task Force/ Resource Designator		Briefing	Leader	Number Persons	Trans. Needed	Report Location		On Shift	Arrival Time	Off Shift
STC RRU 9310C			Conoscente	17		DP 8			0700	
STC XTB 4225C			Summers	16		DP 8			0700	
STC OES 4075C			Taylor	20		DP 8			0700	
STG LAC 1171G			Varela	29		DP 8			0700	
STG LAC 1182G			Mihaljevich	29		DP 8			0700	
STG LAC 1188G			Haynes	29		DP 8			0700	
STL HUU 9120L				5		DP 8			0700	
STL TGU 9250L			Graham	5		DP 8			0700	
DOZ BLM 3184			Lusby	2		DP 8			0700	
DOZ E-193 All Star			Sandling	2		DP 8			0700	
W/T CPY E-136			Garrison	2		DP 8			0700	
DOZB			Shy	1		DP 8			0700	
SOFR			Roberts	1		DP 8			0700	
SOFR			Turner	1		DP 8			0700	
7. Control Operations Continue to build and hold line from Hill 2496 north to DP 5.										
8. Special Instructions All firing must have prior approval by operations. Establish anchor points. Ensure constructed line is tied in. No heavy equipment allowed down Yankee Jim's Rd, access to fire will be Foresthill Rd → Sugar Pine Rd → Big Dipper Rd → Kings Hill Rd										
9. Division/Group Communication Summary										
Function	Frequency	System	Channel	Function	Frequency	System	Channel			
Command	RX 168.4750N TX 173.8125N		NIFC C6 Tone 6	Logistics						
Tactical Div/Group	158.7375N		VTAC 13	Air to Ground	159.3450N		CDF TAC 18			
Prepared by (Resource Unit Ldr.) Gabriel Garcia			Approved by (Planning Sect. Ch.) Ron Bravo/Gabe Schultz			Date 07-14-2012		Time 2200		

DIVISION ASSIGNMENT LIST			1. Branch		2. Division/Group Foresthill Staging			
3. Incident Name Robbers CA-NEU-015060			4. Operational Period Date: 7-15/16-2012 Time: 0600-0600 Hrs.					
5. Operations Personnel								
Operations Chief		Barry Bierman Tod Patten (Night)		Staging Area Manager		Josh Kart / Ryan Jay		
Branch Director				Air Attack Supervisor No.				
6. Resources Assigned this Period								
Strike Team/Task Force/ Resource Designator	Briefing	Leader	Number Persons	Trans. Needed	Report Location	On Shift	Arrival Time	Off Shift
STC MEU 9114C		Steward	18		Foresthill High		0700	
STL BEU 9468L		Miller	6		Foresthill High		0700	
DOZ E-187 Kaiser		Kaise	2		Foresthill High		0700	
DOZ E-194 Travis		O'ferrall	2		Foresthill High		0700	
DOZ E-197 Big Ed's		Cantrell	2		Foresthill High		0700	
W/T E-91 Got Water			2		Foresthill High		0700	
FELB		Pindell	1		Foresthill High		0700	
FALC		Turpin	1		Foresthill High		0700	
FALC		Zelner	1		Foresthill High		0700	
7. Control Operations								
8. Special Instructions Located at Foresthill High School All resources monitor Command frequency and be able to respond within two minutes								
9. Division/Group Communication Summary								
Function	Frequency	System	Channel	Function	Frequency	System	Channel	
Command	RX 168.4750N TX 173.8125N		NIFC C6 Tone 6	Logistics				
Tactical Div/Group				Air to Ground	159.3450N		CDF TAC 18	
Prepared by (Resource Unit Ldr.) Gabe Garcia		Approved by (Planning Sect. Ch.) Ron Bravo/Gabe Schultz			Date 07-14-2012		Time 2200	

DIVISION ASSIGNMENT LIST			1. Branch		2. Division/Group Weimar Staging			
3. Incident Name Robbers CA-NEU-015060			4. Operational Period Date: 7-14/15-2012 Time: 0600-0600 Hrs.					
5. Operations Personnel								
Operations Chief		Barry Bierman Tod Patten (Night)		Staging Area Manager		Mike Montano		
Branch Director				Air Attack Supervisor No.				
6. Resources Assigned this Period								
Strike Team/Task Force/ Resource Designator	Briefing	Leader	Number Persons	Trans. Needed	Report Location	On Shift	Arrival Time	Off Shift
STC OES 4025C		Keating	16		Weimar Elementary		0700	
W/T E-137 WT31		Ayala	2		Weimar Elementary		0700	
W/T E-25 Rogers AWD		Rodgers	2		Weimar Elementary		0700	
7. Control Operations								
8. Special Instructions Located at Weimar Elementary School All resources monitor Command frequency and be able to respond within two minutes								
9. Division/Group Communication Summary								
Function	Frequency	System	Channel	Function	Frequency	System	Channel	
Command	RX 168.4750N TX 173.8125N		NIFC C6 Tone 6	Logistics				
Tactical Div/Group				Air to Ground	159.3450N		CDF TAC 18	
Prepared by (Resource Unit Ldr.) Gabe Garcia		Approved by (Planning Sect. Ch.) Ron Bravo/Gabe Schultz			Date 07-13-2012		Time 2200	

STRUCTURE DEFENSE TACTICAL ACTIONS

- **Check & Go** – Most appropriate action when no Safety Zone/TRA is present and fire front impact is imminent. Conduct rapid evaluation to check for occupants and evaluate for follow up action. **LEAVE promptly.**
- **Prep & Go** – Structure preparation can be safely completed prior to fire front impact. Potential fire activity is too dangerous to remain and/or there is no Safety Zone/TRA present. **LEAVE before escape routes are compromised.**
- **Prep & Defend** – Appropriate when a Safety Zone is nearby and TRA is present. Adequate time exists to prepare the structure for defense prior to fire front impact. Escape routes must be maintained.
- **Fire Front Following** – Follow-up tactic after passage of the fire front. Involves searching for victims, perimeter control, hot spotting, and ember control.
- **Bump & Run** – Resources move ahead of the fire front extinguishing spot fires and defending structures. Utilize extreme caution.
- **Anchor & Hold** – Resources use large volume fire streams to extinguish structure fires, stop structure-to-structure ignitions, protect exposures, and control embers.
- **Tactical Patrol** – Resources remain mobile and continuously monitor assigned area after fire front passage. Involves aggressive mop up around structures.

Structure defense tactics are a vital part of perimeter control operations.

- *Stopping fire spread significantly eliminates the fire's threat to structures.*
- *Connect contained points along the fire's perimeter – typically near the structures at risk ("Connect the Dots").*
- *Perimeter control and structure defense should be done concurrently.*

LEVELS OF ENGAGEMENT

Consider **PACE**

- **P**rimary Plan (Offense)
 - Focused on firefighter safety and objectives
- **A**lternate Plan (Offense)
 - Fallback plan that closely resembles primary plan
- **C**ontingency Plan (Defense)
 - Focused on firefighter safety, move to a safety zone, temporary refuge areas
- **E**mergency Plan (Defense)
 - Firefighter survival
 - Deployment zones/Refuge areas
 - Fire shelters

Consider **DRAW-D**

- **D**efend – **R**einforce – **A**dvance – **W**ithdraw – **D**elay

INCIDENT RADIO COMMUNICATIONS PLAN			Incident Name Robbers Fire			Date/Time Prepared 07/14/2012 2000 hrs			Operational Period Date/Time 07/15/2012 0800 - 07/16/2012 0800	
Ch #	Function	Channel Name/Trunked Radio System Talkgroup	Assignment	RX Freq N or W	RX Tone/NAC	TX Freq N or W	Tx Tone/NAC	Mode A, D or M	Remarks	
1	Command	NIFC C6	FIREGROUND	168.4750 N	156.7	173.8125 N	N/A	A	TONE 6, LINKED TO NIFC C11	
2	Command	NIFC C11	INC BASE	170.6875 N	156.7	166.5750 N	156.7	A	TONE 6, LINKED TO NIFC C6	
3	TAC	CDF T3	DIV A/C	151.1750 N	192.8	151.1750 N	192.8	A		
4	TAC	CDF T8	DIV R	151.3700 N	192.8	151.3700 N	192.8	A		
5	TAC	VFIRE 22	DIV P	154.2650 N		154.2650 N	156.7	A		
6	TAC	VFIRE 23	DIV E	154.2950 N		154.2950 N	156.7	A		
7	TAC	VFIRE 24	DIV G	154.2725 N		154.2725 N	156.7	A		
8	TAC	VTAC 11	DIV Z	151.1375 N		151.1375 N	156.7	A		
9	TAC	VTAC 12	DIV Y	154.4525 N		154.4525 N	156.7	A		
10	TAC	VTAC 13	DIV X	158.7375 N		158.7375 N	156.7	A		
11	TAC	VTAC 14	BRANCH II	159.4725 N		159.4725 N	156.7	A		
12	AIR TO GND	CDF T18	A/G	159.3450 N	192.8	159.3450 N	192.8	A		
13	TAC	CALCORD	EMS A/G	156.0750 N		156.0750 N	N/A	A	EMS SHORT HAUL AIRCRAFT ONLY	
14	AIR GUARD	AIR GUARD	EMERG A/G	168.6250 N		168.6250 N	110.9	A	ALL BRANCHES	
15	SUPPORT	CDF C7	SUPPORT	151.4600 N	103.5	159.3900 N		A	TONE 8 OR 9	
16	AIR GUARD	AIR GUARD	EMERG A/G	168.6250 N		168.6250 N	110.9	A	ALL BRANCHES	
17										
18										
19										
20	AIR GUARD	AIR GUARD	EMERG A/G	168.6250 N		168.6250 N	110.9	A		
Prepared By (Communications Unit) Brian Kornegay COML					Incident Location Shirttail Canyon Southeast of Colfax County Placer State CA Latitude N Longitude W					

The convention calls for frequency lists to show four digits after the decimal place, followed by either an "N" or a "W", depending on whether the frequency is narrow or wide band. Mode refers to either "A" or "D" indicating analog or digital (e.g. Project 25) or "M" indicating mixed mode. All channels are shown as if programmed in a control station, mobile or portable radio. Repeater and base stations must be programmed with the Rx and Tx reversed.

MEDICAL PLAN ICS 206	1. INCIDENT NAME ROBBERS CA NEU 015060	2. DATE PREPARED 7/14/2012	3. TIME PREPARED 1800	4. OPERATIONAL PERIOD 7/15/2012 0600-0600
---------------------------------	--	----------------------------------	-----------------------------	--

5. INCIDENT MEDICAL AID STATIONS			
MEDICAL AID STATIONS	LOCATION		PARAMEDICS
			YES NO
MERT	ICP GOLD COUNTY FAIR GROUNDS, AUBURN CA		X

6. TRANSPORTATION

A. AMBULANCE SERVICES				
NAME	LOCATION	PHONE	PARAMEDICS	
			YES	NO
CALSTAR AIR AMBULANCE	13760 LINCOLN WAY, AUBURN CA	ROBBERS COMMUNICATIONS	X	
AMR		ROBBERS COMMUNICATIONS	X	
CHP COPTER – Air Hoist	AUBURN CA	ROBBERS COMMUNICATIONS	X	

B. INCIDENT AMBULANCES

NAME	LOCATION	PARAMEDICS	
		YES	NO
AMR	DP 6	X	
FORESTHILL FD	FORESTHILL FIRE STATION	X	

7. HOSPITALS

NAME Med Net Channel	ADDRESS	TRAVEL TIME		PHONE	HELIPAD		BURN CENTER	
		AIR	GRND		YES	NO	YES	NO
AUBURN FAITH	1815 EDUCATION ST., AUBURN CA	15	26			X		X
SUTTER ROSEVILLE	1 MEDICAL PLAZA DR. ROSEVILLE CA	10	37		X			X
UC DAVIS	2315 STOCKTON BLVD. SACRAMENTO CA	20	56		X		X	

8. MEDICAL EMERGENCY PROCEDURES

LINE EMERGENCY:
Crew Supervisor will contact Division Supervisor with patient complaint/condition and location.

- Division/Group Supervisor contacts:
 - Closest EMS resource
 - Communications Unit
- Communications Unit contacts:
 - Ground or Air ambulance as requested
 - Operations
 - Safety
 - Medical Unit
- Division Supervisor or designee will serve as point of contact and run medical emergency on assigned channel.
 - A pre-assigned tactical frequency (i.e. CALCORD) should be used for IWI and only for duration of need.
- Communications Unit will clear command channel for emergency traffic as needed and only for duration of need.
- Non critical Medivac will be transported to Foresthill Staging for ground transport to hospital

CAMP EMERGENCY:
Contact Medical Unit with patient complaint/condition and location. Medical Staff will respond to stabilize incident:

- Medical Unit contacts:
 - Communications
 - Safety
 - Logistics
 - Operations
 - Crew Supervisor
 - Comps/Claims
- Communications will request local Med Unit if needed

INJURY REPORTING PROCEDURES

NATURE OF INJURY _____
 LOCATION OF PATIENT _____
 POINT OF CONTACT _____
 TRANSPORTATION REQUESTED BY: AIR ___ GROUND ___
 POINT OF PICKUP _____
 LAT _____ LONG _____
 PATIENT UNIT ID _____
 IS AN EMT WITH PATIENT: YES ___ NO ___
 AGE _____
 SEX: MALE ___ FEMALE ___

**ALL EMERGENCIES---Secure the area
and identify witnesses for later
investigation. Keep an accurate log of
events.**

ICS 206 (Rev 03/12) FR	9. PREPARED BY: (Medical Unit Leader) Dave Latham	10. REVIEWED BY: (Safety Officer) Kevin Twohey, Incident Safety Officer
----------------------------------	--	--

INCIDENT ACTION PLAN SAFETY ANALYSIS										1. Incident Name ROBBERS			2. Date 07/15/12		3. Time		
LCES* Analysis of Tactical Applications Lookouts Communications Escape routes Safety zones										Other Risk Analysis							
Division/Group	Indirect Fireline	Downhill Fireline	Under-slung Fireline	Mid-slope Fireline	Frontal Assault	Anchor Points	Extreme Conditions (Spotting, Wind-driven)	Reburn Potential	Mineshafts		LCES Mitigations	Hazard Materials	Transportation, 1 Hr+	Communications	Structure Defense		Other Risk Mitigations
B-I											Review the Downhill Fireline Construction Checklist prior to engaging						Identify Structure Defensive Temporary Refuge Areas
C/A								X	X		Provide SOFL, EMTL & FOBS on DIVS		X	X			Post lookouts during <u>Prep & Defend</u> Structure Defensive Tactical Ops
Z								X			Review map of mineshafts and hydraulic pits between DP2 & DP5		X				Stay out of garden areas due to possible chemical fences
Y	X	X				X	Topog	X			Drink two quarts of water an hour		X		X		Provide a remote repeater on top of Sugarloaf Mountain
											Maintain positive footing at all times						
B-II	X						Topog		X		Stage ambulance at DP6 & Foresthill FD		X				
B-III																	
X	X	X	X			X	Topog	X	X		Stagger on duty with off duty transits		X	X	X		
P	X					X	Topog	X	X		Post look outs as needed		X	X	X		
E	X										Maintain safe working distances	X	X				
G	X										Adequate drinking water on board		X				
R	X	X				X	Topog		X		Maintain hydration PODS at DPs and Staging		X				

SAFETY OFFICER ROSTER ICT #5

Incident Name: Robbers

Today's Date: July 14, 2012

Safety #	Name	Cell #	Vehicle #	Order #	Trainee	Today's Assignments	
1	Kevin Twohey	707-363-6221	U26	O111.5		Base	
2	Tony Roberts	530-605-5838	C205	O111.35		Branch III Div X	
3	Tim Radar	530-519-0085	Cal Fire			OFF	
4	Jeff Harter	530-521-8187	Cal Fire			Base Inspections	
5	Damon Godden	530-310-1402	Cal Fire	O46		Branch III Div P/R	
6	Mark McKey	707-972-3773		O45		OFF	
7	Mike Waters	530-966-8682	Cal Fire	O234		Base Inspections	
8	Scott Tavalero	530-598-2615	Cal Fire			OFF	
9	Doug Rinella	530-277-2315		O47		Branch I Div Y	
10	Rick Carr	530-277-1174			SOF2 (T)	Base Inspections	
11	Ken Margiott		Cal Fire	O153		Branch III Div E-G	
12	Mike Waltner	530-520-5294	Chico	O201	Yes	OFF	
13	Aaron McAlister	707-495-2245 916-765-5805	Dixon	O354		Branch I Div. C/A/Z	
14	Rich Songstrum	925-383-5010	Contra Costa	O355		OFF	

Prepared by Kevin Twohey, Incident Safety Officer

15	Jordon Russill					Unassigned	
16	Jim Stephens	559-286-5245	Mariposa County	O152	SOFR	Branch I Div P/R	
17	Andy Turner	559-347-1215	FKU	O265	SOFR	Branch III Div X	

CULTURAL RESOURCES

Please keep an eye out for cultural resources.....not all sites have been recorded, so please do not assume the archaeologist knows about a site you have found.

If you encounter any archaeological finds, please report them to Cal Fire Archaeologist Steph Velasquez in Situation, by phone ☎ (951) 901-5029, or to the Situation Unit Leader.

If you encounter something on the line, collect a description and location (GPS with datum information or point plot on map) to turn in.

Things to look for:

- historic mines and associated structures;
- Native American villages with house/dance house depressions, midden soil (dark, sticky soil), bed rock mortars & pestles, artifact scatters with basalt, steatite (soapstone), chalcedony, jasper and obsidian tools

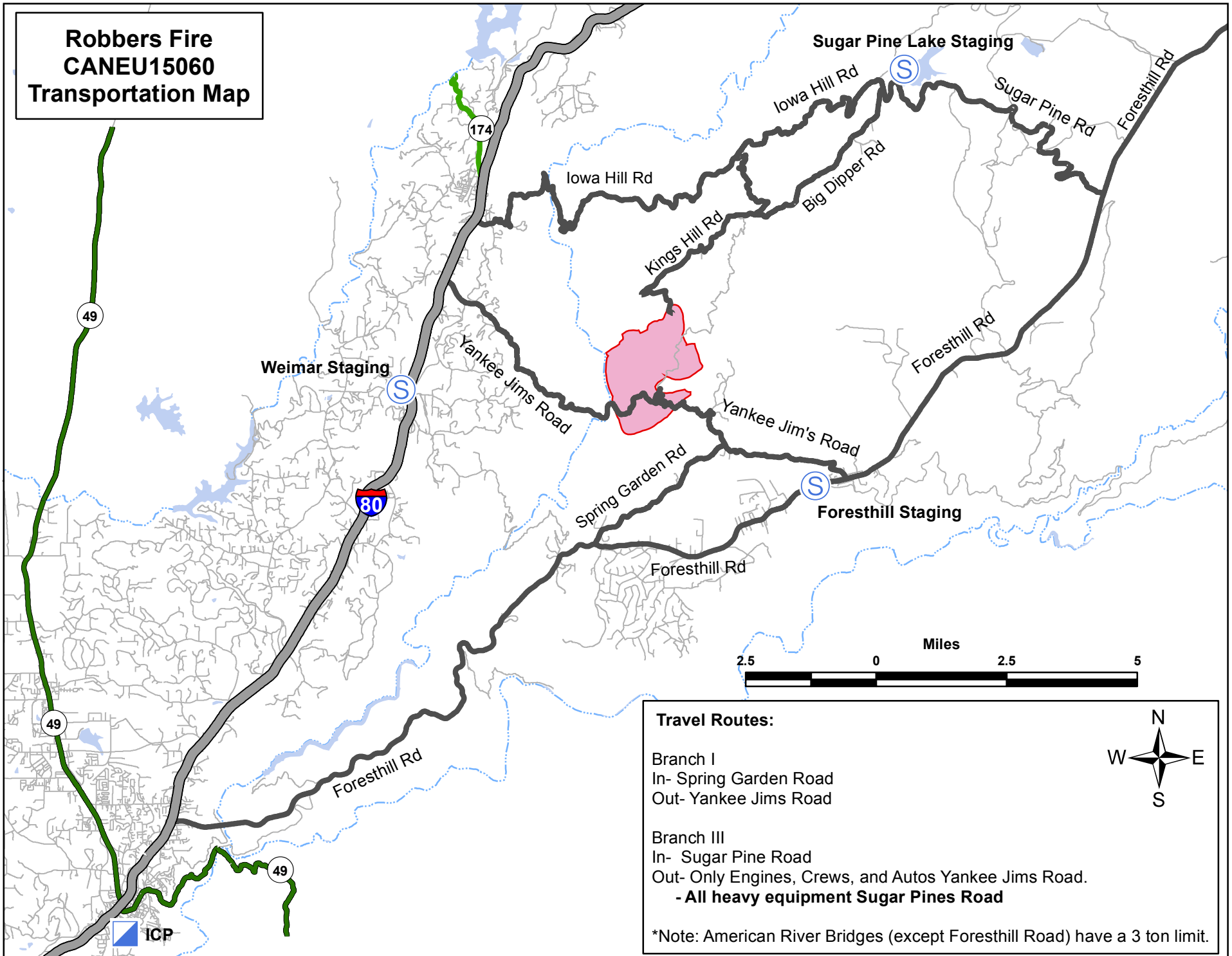
Where you may see sites:

- along rivers and streams on low, natural rises
- near springs
- flat areas, knolls and terraces, especially along watercourses
- ridgelines and peaks

Working around archaeological sites:

- Archaeologist is using orange/black/white “Special Treatment Zone” Flagging
- avoid and protect archaeological sites whenever possible
- if you accidentally hit an arch site, if possible move through site without causing further damage. Inform the archaeologist.
- check staging areas for sites before moving equipment in
- avoid moving artifacts from where you see them
- use caution (minimum impact suppression techniques) when mopping up around archaeological sites.
- DO NOT repair through sites without first contacting the archaeologist.

**Robbers Fire
CANEU15060
Transportation Map**



Travel Routes:

Branch I
In- Spring Garden Road
Out- Yankee Jims Road

Branch III
In- Sugar Pine Road
Out- Only Engines, Crews, and Autos Yankee Jims Road.
- All heavy equipment Sugar Pines Road

*Note: American River Bridges (except Foresthill Road) have a 3 ton limit.