

# ROBBERS INCIDENT

CA-NEU- 015060



**Incident Action Plan**

**July 17, 2012**

**Operational Period: 0600-0600 hrs.**



**Fred Flores**

**Incident Management Team 5**

<b>INCIDENT OBJECTIVES</b>	<b>1. Incident Name</b> Robbers CA NEU 015060	<b>2. Date</b> 7/16/2012	<b>3. Time</b> 2230									
<b>4. Operational Period</b> <p style="text-align: center;">7/17/12                      0600-0600</p>												
<b>5. General Control Objectives for the Incident (include alternatives)</b> <b>Management Objectives :</b> <ol style="list-style-type: none"> <li>1. Provide for firefighter safety at all times</li> <li>2. Protect life, property and resources</li> <li>3. Recognize and protect historical landmarks</li> <li>4. Maintain and foster relationships with cooperators and the public</li> </ol> <b>Control Objectives :</b> <b>Keep the fire within the following box:</b> <p style="margin-left: 20px;">East of Gillis Hill  North of Transmission Lines  West of Forest Hill  South of Iowa Hill</p>												
<b>6. Weather Forecast for Period</b> <b>See attached Weather Forecast</b>												
<b>7. General Safety Message</b>  <b>Fatigue is now the #1 Issue on the incident. Follow proper work/rest cycles and watch your crew members.</b>												
<b>8. Attachments (mark if attached)</b>												
<table style="width: 100%; border: none;"> <tr> <td style="width: 33%;"><input checked="" type="checkbox"/> Organization List - ICS 203</td> <td style="width: 33%;"><input checked="" type="checkbox"/> Medical Plan - ICS 206</td> <td style="width: 33%;"><input checked="" type="checkbox"/> Base Camp Map</td> </tr> <tr> <td><input checked="" type="checkbox"/> Div. Assignment Lists - ICS 204</td> <td><input checked="" type="checkbox"/> Incident Map</td> <td><input type="checkbox"/> Finance Message</td> </tr> <tr> <td><input checked="" type="checkbox"/> Communications Plan - ICS 205</td> <td><input checked="" type="checkbox"/> Traffic Plan</td> <td><input type="checkbox"/></td> </tr> </table>				<input checked="" type="checkbox"/> Organization List - ICS 203	<input checked="" type="checkbox"/> Medical Plan - ICS 206	<input checked="" type="checkbox"/> Base Camp Map	<input checked="" type="checkbox"/> Div. Assignment Lists - ICS 204	<input checked="" type="checkbox"/> Incident Map	<input type="checkbox"/> Finance Message	<input checked="" type="checkbox"/> Communications Plan - ICS 205	<input checked="" type="checkbox"/> Traffic Plan	<input type="checkbox"/>
<input checked="" type="checkbox"/> Organization List - ICS 203	<input checked="" type="checkbox"/> Medical Plan - ICS 206	<input checked="" type="checkbox"/> Base Camp Map										
<input checked="" type="checkbox"/> Div. Assignment Lists - ICS 204	<input checked="" type="checkbox"/> Incident Map	<input type="checkbox"/> Finance Message										
<input checked="" type="checkbox"/> Communications Plan - ICS 205	<input checked="" type="checkbox"/> Traffic Plan	<input type="checkbox"/>										
<b>9. Prepared by (Planning Section Chief)</b> <b>Gabriel Schultz</b>		<b>10. Approved by (Incident Commander)</b> <b>Brian Estes</b>										

ORGANIZATION ASSIGNMENT LIST	
1. Incident Name <b>Robbers CA NEU 015060</b>	
2. Date <b>July 16, 2012</b>	3. Time <b>2200</b>
4. Operational Period <b>July 17, 2012 0600-0600</b>	
Position	Name
5. Incident Commander and Staff	
Incident Commander	<b>Fred Flores</b>
Deputy	<b>Jeff Brand / Brian Estes</b>
Safety Officer	<b>Kevin Twohey</b>
Information Officer	<b>Matt Streck</b>
Liaison Officer	<b>Ron Myers / Pete Dally</b>
6. Agency Representative	
Agency	Name
<b>CHP</b>	<b>Sergeant Kevin Pierce</b>
<b>PCSO</b>	<b>Ty Conners</b>
<b>CAL EMA</b>	<b>Gary Humphrey</b>
<b>PGE</b>	<b>Angie Gibson</b>
<b>BLM</b>	<b>Jerry Martinez</b>
<b>Placer County OES</b>	<b>Richard Simmons</b>
<b>CDC</b>	<b>Mark Micheels</b>
7. Planning Section	
Chief	<b>Ron Bravo</b>
Deputy	<b>Gabe Schultz</b>
Resources Unit	<b>Gabe Garcia / Linda Green</b>
Situation Unit	<b>John Lantz / Steve Forman</b>
Documentation Unit	<b>Rebecca Scott</b>
Demobilization Unit	<b>Shem Hawkins / Patty Hood</b>
Technical Specialists	
Training	<b>Randy Tifus</b>
<b>GISS</b>	<b>Dan Dresselhaus / Jack Harvey</b>
<b>Fire Behavior</b>	<b>Scott Jones</b>
<b>Meteorologist</b>	<b>Jason Clapp</b>
<b>Archaeologist</b>	<b>Steph Velasquez</b>
8. Logistics Section	
Chief	<b>Jim Crawford</b>
Deputy	<b>Rieley / Norton / Hernandez</b>
Supply Unit	<b>Chris Richins</b>
Facilities Unit	<b>Randy Morrhead / Carmel Mitchell</b>
Ground Support Unit	<b>Joe Roberson / Breanna Buchanan (T)</b>
Communications Unit	<b>Brian Kornegay</b>
Medical Unit	<b>Dave Latham</b>
Accommodations	<b>Brian Washington</b>
Security Unit	
Food Unit	

9. Operations Section		
Chief	<b>Barry Blermann(Day)/Tod Patten(Night)</b>	
Deputy	<b>Mike Shorrock / Chris Desena</b>	
a. Branch I- Division/Groups		
Branch Director	<b>David Hawks</b>	
Deputy	<b>Jake Sjolund</b>	
Division/Group	<b>C/A/Z</b>	<b>Eric Ayers</b>
Division/Group	<b>Y</b>	<b>David Davis</b>
Division/Group		
Division/Group		
Division/Group		
b. Branch II - Division/Groups		
Branch Director	<b>Kurt Williges</b>	
Deputy		
Division/Group		
Division/Group		
Division/Group		
c. Branch III - Division/Groups		
Branch Director	<b>Dave Russell</b>	
Deputy	<b>Eric Kurtz</b>	
Division/Group	<b>E</b>	<b>Mark Mondragon</b>
Division/Group	<b>G</b>	<b>Michael Weldner</b>
Division/Group	<b>P</b>	<b>Jim Ferguson / Mark Brooks (T)</b>
Division/Group	<b>R</b>	<b>Jesse Estrada / John Pearl (T)</b>
Division/Group	<b>X</b>	<b>Pat Benninghoven / Kevin Dixon</b>
d. Fire Suppression Repair		
Rehab Specialist	<b>Steve Garcia</b>	
e. Staging		
STAM	<b>FORESTHILL</b>	<b>Jashua Kast / Ryan Jay</b>
STAM		
f. Air Operations Branch		
Air Operations Branch Director	<b>Scott Packwood</b>	
Air Attack Supervisor		
Air Support Supervisor	<b>Kurt Denede / Lane Caldwell</b>	
Helicopter Coordinator	<b>Aaron Burrough</b>	
Air Tanker Coordinator		
10. Finance Section		
Chief	<b>Steve Hawks</b>	
Deputy		
Time Unit	<b>Paul Abe</b>	
Procurement Unit	<b>Mike Weber</b>	
Compensation/Claims Unit	<b>Mara Zaver</b>	
Cost Unit	<b>Darren Dow</b>	
Prepared by (Resource Unit Leader)		
Gabe Garcia	<i>Gabe Garcia</i>	

<b>DIVISION ASSIGNMENT LIST</b>			1. Branch <b>I</b>		2. Division/Group <b>C/A/Z</b>			
3. Incident Name <b>Robbers CA-NEU-015060</b>			4. Operational Period Date: <b>7-17/18-2012</b> Time: <b>0600-0600 Hrs.</b>					
5. Operations Personnel								
Operations Chief		<b>Barry Bierman Tod Patten (Night)</b>		Division/Group Supervisor		<b>Eric Ayers</b>		
Branch Director		<b>David Hawks Jake Sjolund (T)</b>		Air Attack Supervisor No.				
6. Resources Assigned this Period								
Strike Team/Task Force/ Resource Designator	Briefing	Leader	Number Persons	Trans. Needed	Report Location	On Shift	Arrival Time	Off Shift
STC LNU 9130C		Henney	16		DP 20		0700	
STG LMU 9224G		Grendahl	35		DP 20		0700	
STG TCU 9481G		Silva	36		DP 20		0700	
W/T E-134 OES41		Belleci	2		DP 20		0700	
W/T E-89 All Agency		Hill	2		DP 20		0700	
W/T E-48 Gomes		Gomes	2		DP 20		0700	
*SOFL		Rinella	1		DP 20		0700	
7. Control Operations Maintain line and patrol. Mop up 200 ft.								
8. Special Instructions All firing must have prior approval by operations. Establish anchor points. Ensure constructed line is tied in. *SOFL Rinella will be assigned to Branch I on a 12 hour shift. Division will be responsible for checking in with COMM Unit on Support Net when Division resources go On and Off the line. All resources prepare for a 24 hour shift, however, depending on fire activity, some resources may work a 12 hr. shift.								
9. Division/Group Communication Summary								
Function	Frequency	System	Channel	Function	Frequency	System	Channel	
Command	RX 168.4750N TX 173.8125N		NIFC C6 Tone 6	Logistics				
Tactical Div/Group	151.1750N		CDF TAC 3	Air to Ground	159.3450N		CDF TAC 18	
Prepared by (Resource Unit Ldr.) <b>Gabe Garcia</b> <i>Gabriel Garcia</i>		Approved by (Planning Sect. Ch.) <b>Ron Bravo/Gabe Schultz</b> <i>Ron Bravo</i>			Date <b>07-16-2012</b>		Time <b>2200</b>	

DIVISION ASSIGNMENT LIST			1. Branch		2. Division/Group			
3. Incident Name Robbers CA-NEU-015060			4. Operational Period Date: 7-17/18-2012 Time: 0600-0600 Hrs.					
5. Operations Personnel								
Operations Chief		Barry Bierman Tod Patten (Night)		Division/Group Supervisor		David Davis		
Branch Director		David Hawks Jake Sjolund (T)		Air Attack Supervisor No.				
6. Resources Assigned this Period								
Strike Team/Task Force/ Resource Designator	Briefing	Leader	Number Persons	Trans. Needed	Reporting Location	On Shift	Arrival Time	Off Shift
STC MEU 9114C		Steward	18		DP 15		0700	
STC LMU 9225C		Williams	19		DP 15		0700	
STG HUU 9126G		Esteves	33		DP 15		0700	
STG TUU 9472G		Villani	29		DP 15		0700	
W/T E-135 OES42		Ross	2		DP 15		0700	
W/T E-138 Willows7		Lopes	2		DP 15		0700	
*SOFL		Rinella	1		DP 15		0700	
*FEMT		Torosian	1		DP 15		0700	
*FEMT		Rossotti	1		DP 15		0700	
7. Control Operations Maintain line and mop up 200 ft. Continue to develop contingency lines.								
8. Special Instructions All firing must have prior approval by operations. Establish anchor points. Ensure constructed line is tied in. Division will be responsible for checking in with COMM Unit on Support Net when Division resources go on and off the line. *FEMT Torosian and Rossotti will be assigned to Divisions X and Y. *SOFL Rinella will be assigned to Branch I on a 12 hr shift. All resources prepare for a 24 hour shift, however, depending on fire activity, some resources may work a 12 hour shift.								
9. Division/Group Communication Summary								
Function	Frequency	System	Channel	Function	Frequency	System	Channel	
Command	RX 168.4750N TX 173.8125N		NIFC C6 Tone 6	Logistics				
Tactical Div/Group	151.1750N		CDF Tac 3	Air to Ground	159.3450N		CDF TAC 18	
Prepared by (Resource Unit Ldr.) Gabe Garcia <i>Gabe Garcia</i>		Approved by (Planning Sect. Ch.) Ron Bravo/Gabe Schultz <i>ABZ</i>			Date 07-16-2012		Time 2200	

<b>DIVISION ASSIGNMENT LIST</b>			1. Branch <b>II</b>		2. Division/Group				
3. Incident Name <b>Robbers CA-NEU-015060</b>			4. Operational Period Date: <b>7-17/18-2012</b> Time: <b>0600-0600 Hrs.</b>						
5. Operations Personnel									
Operations Chief		<b>Barry Bierman</b> <b>Tod Patten (Night)</b>		Division/Group Supervisor					
Branch Director		<b>Kurt Williges</b>		Air Attack Supervisor No.					
6. Resources Assigned this Period									
Strike Team/Task Force/ Resource Designator	Briefing	Leader	Number Persons	Trans. Needed	Report Location	On Shift	Arrival Time	Off Shift	
STG LMU 9226G		Harrison	35		DP 6 / DP 10		0700		
DOZ E-66 G&O Body		Shinn	2		DP 6 / DP 10		0700		
DOZ E-125 Major		Yost	2		DP 6 / DP 10		0700		
DOZ E-126 G&O Body		Weaver	2		DP 6 / DP 10		0700		
DOZ E-197 Big Ed's		Cantrell	2		DP 6 / DP 10		0700		
W/T E-32 Gassaway		Gassaway	1		DP 6 / DP 10		0700		
DOZB		Keene	1		DP 6 / DP 10		0700		
7. Control Operations Construct contingency line from the north fork of the American River across Windy Point to Iowa Hill, utilizing existing fuel break. Maintain preparedness on Gillis Hill.									
8. Special Instructions Division will be responsible for checking in with COMM Unit on Support Net when Division resources go On and Off the line. All resources prepare for a 24 hour shift, however, depending on fire activity, some resources may work a 12 hr. shift. Report Locations: DP 6 = 1 STG, 2 DOZ, 1 DOZB. DP 10 = 2 DOZ, 1 DOZB, 1 W/T									
9. Division/Group Communication Summary									
Function	Frequency	System	Channel	Function	Frequency	System	Channel		
Command	RX 168.4750N TX 173.8125N		NIFC C6 Tone 6	Logistics					
Tactical Div/Group	159.4725N		VTAC 14	Air to Ground	159.3450N		CDF TAC 18		
Prepared by (Resource Unit Ldr.) <b>Gabe Garcia</b> <i>Gabe Garcia</i>			Approved by (Planning Sect. Ch.) <b>Ron Bravo/Gabe Schultz</b> <i>Ron Bravo</i>			Date <b>07-16-2012</b>		Time <b>2200</b>	

DIVISION ASSIGNMENT LIST			1. Branch		2. Division/Group			
3. Incident Name Robbers CA-NEU-015060			4. Operational Period Date: 7-17/18-2012 Time: 0600-0600 Hrs.					
5. Operations Personnel								
Operations Chief		Barry Bierman Tod Patten (Night)		Division/Group Supervisor		Mark Mondragon		
Branch Director		Dave Russell Eric Kurtz		Air Attack Supervisor No.				
6. Resources Assigned this Period								
Strike Team/Task Force/ Resource Designator	Briefing	Leader	Number Persons	Trans. Needed	Report Location	On Shift	Arrival Time	Off Shift
STG NEU 9233G		Evers	33		DP 6		0700	
DOZ NEU 2340		Besotes	2		DP 6		0700	
DOZ E-65 Volcano		Gordon	2		DP 6		0700	
W/T E-176 FHF89			2		DP 6		0700	
W/T E-222 State Wide		Raddigan	2		DP 6		0700	
DOZB		Shy	1		DP 6		0700	
*SOFL		Margiott	1		DP 6		0700	
7. Control Operations Maintain and hold line. Mop up 200 ft.								
8. Special Instructions All firing must have prior approval by operations. Establish anchor points. Ensure constructed line is tied in. *SOFR Margiott will be assigned to Divisions E and G on a 12 hour shift. Division will be responsible for checking in with COMM Unit on Support Net when Division resources go On and Off the line. All resources prepare for a 24 hour shift, however, depending on fire activity, some resources may work a 12 hr. shift.								
9. Division/Group Communication Summary								
Function	Frequency	System	Channel	Function	Frequency	System	Channel	
Command	RX 168.4750N TX 173.8125N		NIFC C6 Tone 6	Logistics				
Tactical Div/Group	154.2950N		VFIRE 23	Air to Ground	159.3450N		CDF TAC 18	
Prepared by (Resource Unit Ldr.) Gabe Garcia <i>Gabe Garcia</i>		Approved by (Planning Sect. Ch.) Ron Bravo/Gabe Schultz <i>Ron Bravo</i>		Date 07-16-2012		Time 2200		

<b>DIVISION ASSIGNMENT LIST</b>			1. Branch <p style="text-align: center;">III</p>		2. Division/Group <p style="text-align: center;">G</p>			
3. Incident Name <p style="text-align: center;">Robbers CA-NEU-015060</p>			4. Operational Period Date: 7-17/18-2012      Time: 0600-0600 Hrs.					
5. Operations Personnel								
Operations Chief		Barry Bierman Tod Patten (Night)		Division/Group Supervisor		Michael Weidner		
Branch Director		Dave Russell Eric Kurtz		Air Attack Supervisor No.				
6. Resources Assigned this Period								
Strike Team/Task Force/ Resource Designator	Briefing	Leader	Number Persons	Trans. Needed	Report Location	On Shift	Arrival Time	Off Shift
CRW TNF American River IHC		Leyba	19		DP 6		0700	
STL BEU 9468L		Miller	6		DP 6		0700	
DOZ NEU 2342		Emerson	2		DP 6		0700	
DOZ E-64 Mader		Mader	2		DP 6		0700	
DOZB		Gonzalez	1		DP 6		0700	
*SOFL		Margiott	1		DP 6		0700	
*FEMP		Brunelli			DP 6		0700	
7. Control Operations Maintain and hold line. Mop up 200 ft.								
8. Special Instructions All firing must have prior approval by operations. Establish anchor points. Ensure constructed line is tied in. *SOFR Margiott will be assigned to Divisions E and G on a 12 hour shift. *FEMP Brunelli will be assigned to Divisions G and R. Division will be responsible for checking in with COMM Unit on Support Net when Division resources go on and off the line. All resources prepare for a 24 hour shift, however, depending on fire activity, some resources may work a 12 hour shift.								
9. Division/Group Communication Summary								
Function	Frequency	System	Channel	Function	Frequency	System	Channel	
Command	RX 168.4750N TX 173.8125N		NIFC C6 Tone 6	Logistics				
Tactical Div/Group	154.4525N		VTAC 12	Air to Ground	159.3450N		CDF TAC 18	
Prepared by (Resource Unit Ldr.) Gabe Garcia <i>Gabe Garcia</i>			Approved by (Planning Sect. Ch.) Ron Bravo/Gabe Schultz <i>Ron Bravo</i>			Date 07-16-2012		Time 2200



<b>DIVISION ASSIGNMENT LIST</b>			1. Branch <b>III</b>		2. Division/Group <b>P</b>			
3. Incident Name <b>Robbers CA-NEU-015060</b>			4. Operational Period Date: <b>7-17/18-2012</b> Time: <b>0600-0600 Hrs.</b>					
5. <b>Operations Personnel</b>								
Operations Chief		<b>Barry Bierman</b> <b>Tod Patten (Night)</b>		Division/Group Supervisor		<b>Jim Ferguson</b> <b>Mark Brooks (T)</b>		
Branch Director		<b>Dave Russell</b> <b>Eric Kurtz</b>		Air Attack Supervisor No.				
6. <b>Resources Assigned this Period</b>								
Strike Team/Task Force/ Resource Designator	Briefing	Leader	Number Persons	Trans. Needed	Report Location	On Shift	Arrival Time	Off Shift
STC LNU 9131C		Fletcher	18		DP 9		0700	
STC LNU 9147C		Lawson	18		DP 9		0700	
STG MEU 9115G		Taglio	33		DP 9		0700	
STG FKU 9475G		Quillin	31		DP 9		0700	
STG TCU 9476G		Kassik	31		DP 9		0700	
T/F ROBBERS #1-L		Declair	5		DP 9		0700	
DOZ E-6 Ridge		Ridge	1		DP 9		0700	
DOZ E-10 Robinson		Doris	2		DP 9		0700	
W/T E-223 State Wide		Raddigan	2		DP 9		0700	
W/T E-229 Alan's		Logue	1		DP 9		0700	
W/T E-239 Tehema		Adams	1		DP 9		0700	
W/T E-240 49er		Sanders	1		DP 9		0700	
DOZB		Ohlau	1		DP 9		0700	
SOFR		Godden	1		DP 9		0700	
FEMT		Aston	1		DP 9		0700	
FEMT		Dunkell	1		DP 9		0700	
7. Control Operations Construct, monitor, hold line, and mop up 200 ft.								
8. Special Instructions All firing must have prior approval by operations. Establish anchor points. Ensure constructed line is tied in. Division will be responsible for checking in with COMM Unit on Support Net when Division resources go on and off the line. All resources prepare for a 24 hour shift, however, depending on fire activity, some resources may work a 12 hour shift.								
9. <b>Division/Group Communication Summary</b>								
Function	Frequency	System	Channel	Function	Frequency	System	Channel	
Command	RX 168.4750N TX 173.8125N		NIFC C6 Tone 6	Logistics				
Tactical Div/Group	154.2650N		VFIRE 22	Air to Ground	159.3450N		CDF TAC 18	
Prepared by (Resource Unit Ldr.) <b>Gabe Garcia</b> <i>Gabe Garcia</i>		Approved by (Planning Sect. Ch.) <b>Ron Bravo/Gabe Schultz</b> <i>Ron Bravo</i>		Date <b>07-16-2012</b>		Time <b>2200</b>		

<b>DIVISION ASSIGNMENT LIST</b>			1. Branch <b>III</b>		2. Division/Group <b>R</b>			
3. Incident Name <b>Robbers CA-NEU-015060</b>			4. Operational Period Date: <b>7-17/18-2012</b> Time: <b>0600-0600 Hrs.</b>					
5. <b>Operations Personnel</b>								
Operations Chief		<b>Barry Bierman Tod Patten (Night)</b>		Division/Group Supervisor		<b>Jesse Estrada / John Pearl (T)</b>		
Branch Director		<b>Dave Russell Eric Kurtz</b>		Air Attack Supervisor No.				
6. <b>Resources Assigned this Period</b>								
Strike Team/Task Force/ Resource Designator	Briefing	Leader	Number Persons	Trans. Needed	Report Location	On Shift	Arrival Time	Off Shift
STC AEU 9271C		Sanders	16		DP 6		0700	
STC TCU 9441C		Casci	17		DP 6		0700	
STG SHU 9240G		Miles	35		DP 6		0700	
STG AEU 9274G		Neal	35		DP 6		0700	
STL MMU 9428L		Daly	6		DP 6		0700	
W/T E-33 Spitfire		Graham	1		DP 6		0700	
*FEMP		Brunelli	1		DP 6		0700	
7. Control Operations Maintain and hold line. Mop up 200 ft.								
8. Special Instructions All firing must have prior approval by operations. Establish anchor points. Ensure constructed line is tied in. *FEMP Brunelli will be assigned to Divisions G and R. Division will be responsible for checking in with COMM Unit on Support Net when Division resources go on and off the line. All resources prepare for a 24 hour shift, however, depending on fire activity, some resources may work a 12 hour shift.								
9. <b>Division/Group Communication Summary</b>								
Function	Frequency	System	Channel	Function	Frequency	System	Channel	
Command	RX 168.4750N TX 173.8125N		NIFC C6 Tone 6	Logistics				
Tactical Div/Group	151.3700N		CDF TAC 8	Air to Ground	159.3450N		CDF TAC 18	
Prepared by (Resource Unit Ldr.) Gabe Garcia <i>Gabe Garcia</i>			Approved by (Planning Sect. Ch.) Ron Bravo/Gabe Schultz <i>Ron Bravo</i>		Date 07-16-2012		Time 2200	

<b>DIVISION ASSIGNMENT LIST</b>			1. Branch III		2. Division/Group X			
3. Incident Name Robbers CA-NEU-015060			4. Operational Period Date: 7-17/18-2012 Time: 0600-0600 Hrs.					
5. Operations Personnel								
Operations Chief		Barry Bierman Tod Patten (Night)		Division/Group Supervisor		Pat Benninghoven Kevin Dixon (T)		
Branch Director		Dave Russell Eric Kurtz		Air Attack Supervisor No.				
6. Resources Assigned this Period								
Strike Team/Task Force/ Resource Designator	Briefing	Leader	Number Persons	Trans. Needed	Report Location	On Shift	Arrival Time	Off Shift
STC RRU 9310C		Conoscente	17		DP 5		0700	
STG LAC 1171G		Varela	29		DP 5		0700	
STG LAC 1182G		Mihaljevich	29		DP 5		0700	
STG LAC 1188G		Haynes	29		DP 5		0700	
STL TGU 9250L		Graham	5		DP 5		0700	
DOZ MRN 1540		Waters	4		DP 5		0700	
DOZ E-124 Bordges		Bordges	2		DP 5		0700	
W/T CPY E-136		Garrison	2		DP 5		0700	
W/T E-91 Got Water		McDaniel	2		DP 5		0700	
W/T E-233 Hertzig		Hertzig	1		DP 5		0700	
W/T E-241 49er		Sasser	1		DP 5		0700	
SOFR		Turner	1		DP 5		0700	
*FEMT		Torosian	1		DP 5		0700	
*FEMT		Rossotti	1		DP 5		0700	
7. Control Operations Maintain and hold line. Mop up 200 ft.								
8. Special Instructions All firing must have prior approval by operations. Establish anchor points. Ensure constructed line is tied in. Division will be responsible for checking in with COMM Unit on Support Net when Division resources go on and off the line. *FEMT Torosian and Rossotti will be assigned to Divisions X and Y. All resources prepare for a 24 hour shift, however, depending on fire activity, some resources may work a 12 hour shift.								
9. Division/Group Communication Summary								
Function	Frequency	System	Channel	Function	Frequency	System	Channel	
Command	RX 168.4750N TX 173.8125N		NIFC C6 Tone 6	Logistics				
Tactical Div/Group	158.7375N		VTAC 13	Air to Ground	159.3450N		CDF TAC 18	
Prepared by (Resource Unit Ldr.) Gabe Garcia <i>Gabe Garcia</i>		Approved by (Planning Sect. Ch.) Ron Bravo/Gabe Schultz <i>Ron Bravo</i>			Date 07-16-2012		Time 2200	

<b>DIVISION ASSIGNMENT LIST</b>			1. Branch		2. Division/Group Fire Suppression Repair			
3. Incident Name Robbers CA-NEU-015060			4. Operational Period Date: 7-17/18-2012 Time: 0600-0600 Hrs.					
5. Operations Personnel								
Operations Chief		Barry Bierman Tod Patten (Night)		Rehab Specialist		Steve Garcia		
Branch Director		Air Attack Supervisor No.						
6. Resources Assigned this Period								
Strike Team/Task Force/ Resource Designator	Briefing	Leader	Number Persons	Trans. Needed	Report Location	On Shift	Arrival Time	Off Shift
GRD E-51 Taylor's		Taylor	1				0700	
GRD NEU E-224		Delahunt	1				0700	
GRD E-225			1				0700	
W/T E-25 Rogers AWD		Rodgers	2				0700	
W/T E-26 Rogers AWD		Rodgers	2				0700	
W/T E-32 Gassaway		Gassaway	1				0700	
W/T E-230 River Oak		Brozek	2				0700	
W/T E-231 River Oak		Brozek	2				0700	
W/T E-24			1				0700	
W/T E-241 49er		Sasser	1				0700	
7. Control Operations Develop and Implement Suppression Repair Plan.								
8. Special Instructions Reporting location will be announced at briefing. Division will be responsible for checking in with COMM Unit on Support Net when Division resources go On and Off the line. All resources prepare for a 24 hour shift, however, depending on fire activity, some resources may work a 12 hr. shift.								
9. Division/Group Communication Summary								
Function	Frequency	System	Channel	Function	Frequency	System	Channel	
Command	RX 168.4750N TX 173.8125N		NIFC C6 Tone 6	Logistics				
Tactical Div/Group	151.1375N		VTAC 11	Air to Ground	159.3450N		CDF TAC 18	
Prepared by (Resource Unit Ldr.) Gabe Garcia <i>Gabe Garcia</i>		Approved by (Planning Sect. Ch.) Ron Bravo/Gabe Schultz <i>Ron Bravo</i>			Date 07-16-2012		Time 2200	

<b>DIVISION ASSIGNMENT LIST</b>			1. Branch		2. Division/Group <b>Foresthill Staging</b>			
3. Incident Name <b>Robbers CA-NEU-015060</b>			4. Operational Period Date: <b>7-17/18-2012</b> Time: <b>0600-0600 Hrs.</b>					
5. <b>Operations Personnel</b>								
Operations Chief		<b>Barry Bierman Tod Patten (Night)</b>		Staging Area Manager		<b>Joshua Kast / Ryan Jay</b>		
Branch Director				Air Attack Supervisor No.				
6. <b>Resources Assigned this Period</b>								
Strike Team/Task Force/ Resource Designator	Briefing	Leader	Number Persons	Trans. Needed	Report Location	On Shift	Arrival Time	Off Shift
CRW NEU WAR 5			16		Foresthill Mill Site		0700	
DOZ BLM 3184		Lusby	2		Foresthill Mill Site		0700	
W/T E-232 Hertzig		Hertzig	1		Foresthill Mill Site		0700	
W/T E-90		Hill	1		Foresthill Mill Site		0700	
7. Control Operations Maintain Staging for incident support.								
8. Special Instructions Located at Foresthill Mill site. All resources monitor Command frequency and be able to respond within two minutes. Division will be responsible for checking in with COMM Unit on Support Net when Division resources go On and Off the line. All resources prepare for a 24 hour shift, however, depending on fire activity, some resources may work a 12 hr. shift.								
9. <b>Division/Group Communication Summary</b>								
Function	Frequency	System	Channel	Function	Frequency	System	Channel	
Command	RX 168.4750N TX 173.8125N		NIFC C6 Tone 6	Logistics				
Tactical Div/Group				Air to Ground	159.3450N		CDF TAC 18	
Prepared by (Resource Unit Ldr.) Gabe Garcia <i>Gabe Garcia</i>			Approved by (Planning Sect. Ch.) Ron Bravo/Gabe Schultz <i>Ron Bravo</i>			Date 07-16-2012		Time 2200



## FIRE WEATHER FORECAST

**FORECAST: 4**

**NAME OF FIRE: Robbers**

**PREDICTION FOR: Tuesday**

**UNIT: Cal Fire Nevada-Yuba-Placer**

**SHIFT DATE: July 17, 2012  
TIME AND DATE**

**FORECAST ISSUED: 2000 PDT, July 16**

*Jason M. Clapp*  
**Jason Clapp  
Incident Meteorologist**

### WEATHER DISCUSSION:

Upper Low moves south over NW California coastal area and generates stronger south to southwest ridge winds today with cooler temps, increased RH and some cloudiness. The Low will remain nearly stationary Wednesday and continue the cool temps and elevated RH with breezy winds. Overnight RH recovery will be good both nights with some gusts over ridges and enhanced down canyon winds.

### WEATHER FORECAST FOR TUESDAY:

**WEATHER:** Partly cloudy with morning smoke down canyon. Upper Low over NW California will increase ridge winds, cool temps, and raise RH again. Not expecting any shower activity on the fire.

**TEMPERATURES:** 73-78 (Down 3-5)

**HUMIDITY:** 38-42% (Up around 5%).

**20 FT WINDS:** **Ridgetop** – East to southeast 4-8 mph in the morning, becoming south-southwest around 0900 and increasing to 8-12 mph with gusts around 20 mph in the afternoon.

**Slope/Valley** – Upslope/Upcanyon 8-12 with gusts to 14-18 mph in aligned canyons (eddying in American and Shirrtail Canyon).

**LAL: 1.**

**STABILITY/INVERSION:** Lifting around 0900.

### WEATHER FORECAST FOR TONIGHT AFTER SUNSET:

**WEATHER:** Not as much smoke trapped under inversions. East to southeast wind may pull smoke down North Fork American River Canyon. Good RH recovery.

**TEMPERATURES:** 52-57 valleys... 58-62 mid/upper slopes. (Down 4-5)

**HUMIDITY:** 80-90% Valley... 60-70% Mid/Upper slope. (Up 5-10%)

**20 FT WINDS:** **Ridgetop** – East-southeast 5-9 mph.

**Slope/Valley** - Downslope/Downcanyon 3-5 mph with gusts to 10 mph.

**LAL: 1**

**STABILITY/INVERSION:** Weaker inversions set up around sunset.

### WEATHER FORECAST FOR WEDNESDAY:

**WEATHER:** Partly cloudy with morning smoke. Upper Low over NW California remains stationary. Ridge winds likely still gusty with slight warming and drying.

**TEMPERATURES:** 75-80 (Little Change)

**HUMIDITY:** 35-40% (Little Change).

**20 FT WINDS:** **Ridgetop** – Southeast 3-6 mph in the morning, becoming SSW around 0900 and increasing to 6-10 mph with gusts to 15 mph in the afternoon.

**Slope/Valley** – Upslope/Upcanyon 5-7 with gusts to 10-12 mph in aligned canyons (eddying in American and Shirrtail Canyon).

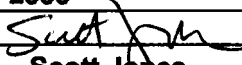
**LAL: 1.**

**STABILITY/INVERSION:** Lifting around 0900.

### EXTENDED OUTLOOK FOR THURSDAY THROUGH SATURDAY:

An upper low weakens and moves northeast Thursday which will decrease ridge winds... still from the southwest. Temperatures and RH will trend warmer and drier. Moisture from remnants of Hurricane Fabio may flow over the region late Thursday into Friday and generate some cloudiness followed by some monsoonal moisture over region Fri and Sat. Only a slight chance of thunderstorms... mainly higher elevations of Sierra.

# FIRE BEHAVIOR FORECAST

FORECAST NUMBER: # 5	TYPE OF FIRE: Wildland
FIRE NAME: ROBBERS	OPERATIONAL PERIOD: 07/17/2012 (0600-0600)
DATE ISSUED: 07/16/2012	TIME ISSUED: 2000
UNIT: NEU	SIGNED:  Typed/printed: Scott Jones

## INPUTS

### WEATHER SUMMARY:

Partly cloudy with morning smoke down canyon. Upper low over NW Cal. will increase ridge winds, cool temps, and raise RH values.

MAX temp 73-78 (Down 3-5) MIN RH 38-42% (Up 5%)

Wind (20 ft) Ridgetop – ESE 4- 8 mph in the morning becoming SSW around 09:00 and increasing 8-12 with gusts around 20 mph in the afternoon

Slope / Valley... Upslope / Upcanyon 8-12 mph with gusts 14-18 mph in favored canyons.

### Tonight after sunset

Not as much smoke trapped under inversions. East to southeast wind may pull smoke down the north fork of the American River Canyon with good RH recovery.

## OUTPUTS

### FIRE BEHAVIOR

#### GENERAL:

The intense fire behavior from the first three operational periods has lessened considerably. The past two operational periods have had moderate to higher levels of activity, mainly during firing operations. The most limiting factor to making a direct attack has been access. Rolling material continues to be a major concern. While the fire behavior is expecting to be lower, any fire activity in a drainage, previously burned area or in optimal alignment with wind and slope should be treated as a high probability for extreme fire behavior.

Fire Behavior for Optimal Alignment

Fuel Type	ROS (RATE) FWD	ROS Flank	FL (Ft)	P(i)G
Timber (FM10)	7-20 ft/min	1-3 ft/min	3-7 ft	49%
Brush (SH7)	30-70 ft/min	3-8 ft/min	10-20 ft	49%

#### SPECIFIC:

Branch I: Aggressive mop-up operations will be needed for hot spots near the lines. Downed heavy logs, snags and pockets of heavy leaf litter are still smoldering with 1-3 foot flame lengths. Any low to moderate activity in drainages needs to be monitored, with the early morning wind there will be an increase the potential for re-burn.

Branch II: There is a lowered level of expectation of fire behavior based on the activity from yesterday. Early morning winds will be the main concern for any opportunities to generate increased activity in the area.

Branch III: Continues to see the most active fire as the Indian Creek Drainage lines up with the predominant winds. Higher levels of fire activity has been consistent with the development of the S-SW pattern, this event is expected to begin several hours earlier then the last several days. Steep slope canyons (50% plus) with taller brush not only influence fire behavior but make establishing viable escape routes and lookouts very difficult. Refer to IRPG downhill checklist for any downhill construction.

#### AIR OPERATIONS:

Morning inversion may hold smoke in the area limiting early flight operations. Once the inversion lifts there are no expected weather limitations however heavy smoke production could inhibit visibility.

## SAFETY

Unburned fuel between you and the fire.  
Snags will be surfacing, Look Up Down and Around.  
Terrain and fuels make escape to safety zones difficult.

Be Safe – God Bless

# **SAFETY MESSAGE**

INCIDENT NAME

**ROBBERS**

DATE PREPARED

7/16/12

TIME PREPARED

1900 Hours

OPERATIONAL PERIOD **July 17, 2012 0600 - 0600**

**WHEN IT COMES TO SAFETY: THE ONLY THING WORSE  
THAN BEING OBLIVIOUS TO THE UNKOWN IS IGNORING  
THE OBVIOUS...**

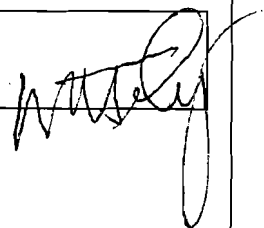
1. Fatigue is now the #1 issue on the incident. Follow proper work/rest cycles and watch your crew members.
2. Roads are narrow and there are blind curves ...**SLOW DOWN** and drive defensively! Drive with your headlights on at all times.
3. Internal islands of fuel are still burning. Stay alert!
4. Monitor Weather conditions. Anticipate changes in wind speed and direction. Take weather readings often and at regular intervals.
5. Beware of steep slopes, trip hazards, and loose footing. Watch your step – very steep terrain and there are mine shafts and hydraulic pits in the area.
6. Mop up is a Hazardous job! Situational Awareness 360. Wear all PPE during Mop Up.

## **HEAT RELATED INJURIES ARE PREVETABLE!**

- **Insure your crews are well hydrated and are provide rest breaks**
- **Monitor your crew members for signs of fatigue**
- **Personal Monitoring:**
  - **Keep track of your urine output & color**
  - **Monitor your core temperature and pulse rate**
  - **Drink 8 ounces of water every 15 minutes**

Prepared By:  
Kevin Twohey , ISO

Approved By (Safety Officer, ICT #5)  
Incident Safety Officer, Kevin Twohey





## STRUCTURE DEFENSE TACTICAL ACTIONS

- **Check & Go** – Most appropriate action when no Safety Zone/TRA is present and fire front impact is imminent. Conduct rapid evaluation to check for occupants and evaluate for follow up action. **LEAVE promptly.**
- **Prep & Go** – Structure preparation can be safely completed prior to fire front impact. Potential fire activity is too dangerous to remain and/or there is no Safety Zone/TRA present. **LEAVE before escape routes are compromised.**
- **Prep & Defend** – Appropriate when a Safety Zone is nearby and TRA is present. Adequate time exists to prepare the structure for defense prior to fire front impact. Escape routes must be maintained.
- **Fire Front Following** – Follow-up tactic after passage of the fire front. Involves searching for victims, perimeter control, hot spotting, and ember control.
- **Bump & Run** – Resources move ahead of the fire front extinguishing spot fires and defending structures. Utilize extreme caution.
- **Anchor & Hold** – Resources use large volume fire streams to extinguish structure fires, stop structure-to-structure ignitions, protect exposures, and control embers.
- **Tactical Patrol** – Resources remain mobile and continuously monitor assigned area after fire front passage. Involves aggressive mop up around structures.

*Structure defense tactics are a vital part of perimeter control operations.*

- *Stopping fire spread significantly eliminates the fire's threat to structures.*
- *Connect contained points along the fire's perimeter – typically near the structures at risk ("Connect the Dots").*
- *Perimeter control and structure defense should be done concurrently.*

## LEVELS OF ENGAGEMENT

### Consider **PACE**

#### **P**Primary Plan (Offense)

- Focused on firefighter safety and objectives

#### **A**lternate Plan (Offense)

- Fallback plan that closely resembles primary plan

#### **C**ontingency Plan (Defense)

- Focused on firefighter safety, move to a safety zone, temporary refuge areas

#### **E**mergency Plan (Defense)

- Firefighter survival
  - Deployment zones/Refuge areas
  - Fire shelters

### Consider **DRAW-D**

**D**efend – **R**einforce – **A**dvance – **W**ithdraw – **D**elay

INCIDENT ACTION PLAN SAFETY ANALYSIS										1. Incident Name <b>ROBBERS</b>		2. Date 07/17/12		3. Time 06:00				
LCES* Analysis of Tactical Applications Lookouts Communications Escape routes Safety zones										Other Risk Analysis								
Division/Group	Indirect Fireline	Downhill Fireline	Underbank Fireline	Mid-slope Fireline	Frontal Assault	Anchor Points	Extreme Conditions (Spotting, Wind-driven)	Unburned Area	Snags	Topography	LCES Mitigations	Hazard Materials	Transportation, 1 Hr+	Communications	Structure Defense	Multi-Aircraft	Mineshafts	Other Risk Mitigations
B-I																		
C/A/Z							X			X	Post Lookouts		X					Defensive Driving
Y	X						X			X	Lookouts and Safety Zones		X					Defensive Driving and Situational Awareness
B-II	X									X			X				X	Defensive Driving
B-III													X					
E	X									X	Lookouts and Safety Zones		X					Defensive Driving
G	X									X	Lookouts and Safety Zones		X					Defensive Driving
P	X	X	X		X	X	X	X	X	X	Lookouts and Safety Zones		X			X	X	Defensive Driving and Watch for Aircraft
R	X									X	Lookouts and Safety Zones		X				X	Defensive Driving
X	X	X								X	Lookouts and Safety Zones		X				X	Defensive Driving
Suppression Repair										X			X				X	Defensive Driving
Forehill Staging													X					Defensive Driving

# AIR OPERATIONS SUMMARY

OPERATIONAL PERIOD DATE: DAY SHIFT DATE: 07/17/2012

START: 0700 END: 2200

(Expanded Form for Large Operations)

<b>1. INCIDENT NAME:</b> Robbers	<b>2. PREPARED BY:</b> S. Packwood	<b>PREPARED DATE/TIME:</b> 07/16/12 1930	<b>3.</b>
<b>4. REMARKS (Safety Notes, Hazards, Air Operations Special Equipment,, etc.):</b> *****HIGH VOLTAGE POWERLINES near the fire perimeter running East and West****		SUNRISE: 0551 SUNSET : 2029 CUTOFF: 1959	<b>5. TFR: A#</b> Altitude: 8,000' MSL Freq. 135.025 39*05.13 X 120* 53.21  NOTAM
All GPS data to be collected (degrees, minutes & decimal minutes) **Avoid aerial application of retardant or foam within 300' of waterways, bodies of water. If retardant is dropped within these areas, notify AOB with Lat & Long, est. of gallons, and a map. Grass Valley AAB or McClellan for Air Tanker reloading			
<b>TRACK RETARDANT DROP LOCATIONS</b>			

6. PERSONNEL	Phone	FREQUENCIES	AM	FM	8. FIXED-WING # Avail / Type/ Make-Model / FAA N# / Base(s)
AODB: Scott Packwood	530 310-2236				AA-230
AODB: Kurt Dervede	707 499-2251	AIR/AIR FW:		168.3250	Air Tactical AA-210
ATGS: Kurt Chamberlin	530 273-5278	AIR/AIR RW:	135.025		Lead planes L-
ATGS: Marlene Heisey	530 521-8053	AIR/GROUND:		159.3450	L-
HLCO: Aaron Burrough	530 949-9868				Airtankers 2 Type III
HLCO: John Messina	530 277-2308	DECK:		163.1000	
ASGS: Lane Caldwell	530 310-2213	NIFC			
HEBM. Warren Parrish (Blue Canyon)	530-401-2177	CMD6		TX 173.8125 RX 168.4750	
		AIR GUARD		168.625	
Grass Valley Tanker Base	530 272-4952	TOLC	123.025		Other:
McClellan Reload Base					

## 9. HELICOPTERS (Use Additional Sheets As Necessary)

FAA N#	TY	MAKE/MODEL	BASE	AVAIL	START	REMARKS	FAA N#	TY	MAKE/MODEL	BASE	AVAIL	START	REMARKS
408PJ	3	Bell 407	Blu Cyn	0800	0830	Helco	Guard 821	1	UH60	Blu Cyn			Bucket
65PJ	3	Bell 206	Blu Cyn	0800	0830	Helco	Guard 822	1	UH60	Blu Cyn			Bucket
91SG	3	Bell 206	AUN	0800	0830	Helco / Recon	Guard 825	1	UH60	AUN	24HR		Medivac / Rescue
Copter 205	2	UH1H	Blu Cyn	0800	0830	Short Haul / Bucket	Guard 830	1	UH60	Blu Cyn			Bucket
198HM	2	UH1B	Blu Cyn	0800	0830	Bucket / Restricted	Guard 832	1	UH60	Blu Cyn			Bucket
277W	2	UH1H	Blu Cyn	0800	0830	Tank							
168U	2	S58T	Blu Cyn	0800	0830	Bucket / Long Line							
207PJ	2	Bell 205	Blu Cyn	0800	0830	Bucket / Long Line							
209PJ	2	Bell 205	Blu Cyn	0800	0830	Bucket / Long Line							
55J	2	Bell 205	Blu Cyn	0800	0830	Bucket / Long Line							

10. TASK/MISSION/ASSIGNMENT (Use ICS-220a if additional space needed; Type/Function includes: Air Tactical, Retardant, Recon, Personnel Transport, Water Dropping, etc.)

TYPE/FUNCTION	NAME OF PERSONNEL OR CARGO (if applicable) OR INSTRUCTIONS FOR TACTICAL AIRCRAFT	MISSION START	8FLY FROM	FLY TO
Air Tactical	Direct A/C operations, coordinate with Ops.	0800		Fire
Bucket support	HELICOPTERS. SUPPORT CREWS ON THE LINE.			
PAX/Cargo	SLING LOADS NEED TO BE ORDERED BY 1400 HRS. ORDER THROUGH COMMUNICATIONS			
Medevac	See Medical Plan for specifics.			
Recon	IC, OSC, and SUL as requested		Auburn Airport	Fire
Helispot Construction	Once helispot established/approved/numbered, notify Air Ops with Lat Long			
Helitack	When on fireline, be sure to follow LCES, 10s and 18s. Use Lookouts and Trigger Points.			
VLAT	Maintain 3 minute airspace separation post VLAT drop			
Communications	Must use CDF Command 7 to contact Grass Valley ECC direct			

11. Helispot, Dip Site Portable Retardant Base and Sling Spot Information-

<u>HELI-SPOTS #</u>	<u>DIP SITES</u>	<u>SLING SPOT #</u>	<u>DIVISION</u>	<u>LATITUDE</u>	<u>LONGITUDE</u>	<u>REMARKS</u>
BLU				39* 16.49	120* 42.585	Helibase at Blue Canyon Airport
AUN				38* 57.17	121* 04.54	Auburn Airport /Recon flight
		H-1		39* 03.336	120* 54.382	Sling Loads Only
		H-2		39* 03. 763	120* 53.898	Sling Loads Only

INCIDENT RADIO COMMUNICATIONS PLAN			Incident Name <b>Robbers Fire</b>			Date/Time Prepared <b>07/16/2012 2000 hrs</b>			Operational Period Date/Time <b>7/17/12 0800 - 7/18/12 0800</b>	
Ch #	Function	Channel Name/Trunked Radio System Talkgroup	Assignment	RX Freq N or W	RX Tone/NAC	TX Freq N or W	Tx Tone/NAC	Mode A, D or M	Remarks	
1	COMMAND	NIFC C6	FIREGROUND	168.4750 N		173.8125 N	156.7	A	GOOD FOR BRANCH 1	
2	COMMAND	NIFC C11	INC BASE	170.6875 N		166.5750 N	156.7	A	GOOD AT INC BASE	
3	COMMAND	NIFC C4	FIREGROUND	166.6125 N		168.4000 N	156.7	A	GOOD FOR BRANCH 3	
4	TAC	CDF T3	DIV A/C/Y/Z	151.1750 N	192.8	151.1750 N	192.8	A		
5	TAC	CDF T8	DIV R	151.3700 N	192.8	151.3700 N	192.8	A		
6	TAC	VFIRE 22	DIV P	154.2650 N		154.2650 N	156.7	A		
7	TAC	VFIRE 23	DIV E	154.2950 N		154.2950 N	156.7	A		
8	TAC	VFIRE 24		154.2725 N		154.2725 N	156.7	A	UNASSIGNED	
9	TAC	VTAC 11	FIREGROUND	151.1375 N		151.1375 N	156.7	A	FIRE SUPPRESSION REPAIR	
10	TAC	VTAC 12	DIV G	154.4525 N		154.4525 N	156.7	A		
11	TAC	VTAC 13	DIV X	158.7375 N		158.7375 N	156.7	A		
12	TAC	VTAC 14	BRANCH II	159.4725 N		159.4725 N	156.7	A		
13	AIR TO GND	CDF T18	A/G	159.3450 N	192.8	159.3450 N	192.8	A		
14	TAC	CALCORD	EMS A/G	156.0750 N		156.0750 N	N/A	A	EMS SHORT HAUL AIRCRAFT ONLY	
15	SUPPORT	CDF C7	SUPPORT	151.4600 N	103.5	159.3900 N		A	TONE 8 OR 9	
16	AIR GUARD	AIR GUARD	EMERG A/G	168.6250 N		168.6250 N	110.9	A	ALL BRANCHES	
17										
18										
19										
20	AIR GUARD	AIR GUARD	EMERG A/G	168.6250 N		168.6250 N	110.9	A		
Prepared By (Communications Unit) Brian D. Kornegay COML					Incident Location Shirttail Canyon Southeast of Colfax County Placer State CA Latitude N Longitude W					

The convention calls for frequency lists to show four digits after the decimal place, followed by either an "N" or a "W", depending on whether the frequency is narrow or wide band. Mode refers to either "A" or "D" indicating analog or digital (e.g. Project 25) or "M" indicating mixed mode. All channels are shown as if programmed in a control station, mobile or portable radio. Repeater and base stations must be programmed with the Rx and Tx reversed.

ROBBERS INCIDENT PHONE LIST –July 16, 2012

**IC/LIASION** 530 887-7352  
OPERATIONS 530 887-7302  
**DEPUTY BRANCH** 925 817-9956 CELL  
SAFETY 707 363-6221  
**CREW TECH SPEC** 707 355-1021

INFORMATION 530 887-7357  
**530 887-7313**

SHERRIFF COMMUNICATIONS 530 308-0849  
**PG&E** 530 906-0533

PLANS

**RESOURCE** 530 887-7311  
SITUATION 707 696-7501 / 408 691-5133  
**DOCUMENTATION** 619 495-8503  
DEMOB 530 887-7355  
**TRAINING SPECIALIST** 408 981-2023

GISS 530 448-2499  
**FIRE BEHAVIOR** 530 410-2315  
METEOROLOGIST 240 778-5296

LOGISTICS

**ACCOMADATIONS** 530 887-7306 / 916 205-4732  
SUPPLY 530 370-0815/916 220-6019  
**FACILITIES** 530 708-2734/ 530 448-2488  
GROUND SUPPORT 530 448-2468  
**EQUIPMENT REPAIR** 530 887-7309  
ORDERING 925 872-8577/ FAX 530 887-7310  
**NORTH TREE OFFICE TRAILER /FAX SERVICES** FAX 530 887-7354  
COMMUNICATIONS 530 417-4560  
**530 417-4561**  
530 417-4562

**MEDICAL UNIT** 805 558-3932/ 805 441-1049

FINANCE

TIME UNIT 530 887-7301  
**COST** 530 887-7301  
PROCUREMENT 916 804-2113  
**COMPENSATION/CLAIMS UNIT** 559 269-9766 cell/ 530 887-7303 FAX & LANDLINE

AIR OPERATIONS

AIR BRANCH DIRECTOR 530 310-2236  
**AIR SUPPORT** 707 499-2251/ 530 310-2213  
BLUE CANYON HELIBASE 530 401-2177  
**AUBURN HELIBASE** 925 407-7004

UPDATED 7-16 @ 1600

<b>MEDICAL PLAN</b> <b>ICS 206</b>	1. INCIDENT NAME <b>ROBBERS</b> <b>CA NEU 015060</b>	2. DATE PREPARED 7/16/2012	3. TIME PREPARED 1900	4. OPERATIONAL PERIOD 7/17/2012 0600-0600
---------------------------------------	--	-------------------------------	--------------------------	--

5. INCIDENT MEDICAL AID STATIONS				
MEDICAL AID STATIONS	LOCATION			PARAMEDICS
				YES NO
MERT	ICP GOLD COUNTY FAIR GROUNDS, AUBURN CA			X

6. TRANSPORTATION				
A. AMBULANCE SERVICES				
NAME	LOCATION	PHONE	PARAMEDICS	
			YES	NO
CALSTAR AIR AMBULANCE	13760 LINCOLN WAY, AUBURN CA	ROBBERS COMMUNICATIONS	X	
FORESTHILL FIRE	PO BOX 1099 FORESTHILL CA.	ROBBERS COMMUNICATIONS	X	
CHP H-24 - Hoist	AUBURN AIRPORT, CA	ROBBERS COMMUNICATIONS	X	

7. INCIDENT AMBULANCES				
NAME	LOCATION	PARAMEDICS		
		YES	NO	
Medic-89	FORESTHILL STAGINIG	X		
NATIONAL GUARD H-823 (Night Hoist)	AUBURN AIRPORT (Dedicated 24 hour) No UC Davis	X		

8. HOSPITALS								
NAME Med Net Channel	ADDRESS	TRAVEL TIME		PHONE	HELIPAD		BURN CENTER	
		AIR	GRND		YES	NO	YES	NO
AUBURN FAITH	1815 EDUCATION ST., AUBURN CA	15	26			X		X
SUTTER ROSEVILLE	1 MEDICAL PLAZA DR. ROSEVILLE CA	10	37		X			X
UC DAVIS	2315 STOCKTON BLVD. SACRAMENTO CA	20	56		X	NO UH60	X	

<p><b>LINE EMERGENCY:</b> Crew Supervisor will contact Division Supervisor with patient complaint/condition and location.</p> <ul style="list-style-type: none"> <li>Division/Group Supervisor contacts:             <ol style="list-style-type: none"> <li>Line EMT / Medic</li> <li>Communications Unit</li> </ol> </li> <li>Communications Unit contacts:             <ol style="list-style-type: none"> <li>Ground or Air ambulance as requested</li> <li>Operations</li> <li>Safety</li> <li>Medical Unit</li> </ol> </li> <li>Division Supervisor or designee will serve as point of contact and run medical emergency on assigned channel.             <ol style="list-style-type: none"> <li>A pre-assigned tactical frequency (i.e. CALCORD) should be used for IWI and only for duration of need.</li> </ol> </li> <li>Communications Unit will clear command channel for emergency traffic as needed and only for duration of need.</li> <li>Non- critical Medivac will be transported to Foresthill Staging for ground transport to hospital. Mild status consider MERT.</li> </ul> <p><b>CAMP EMERGENCY:</b> Contact Medical Unit with patient complaint/condition and location. Medical Staff will respond to stabilize incident:</p> <ul style="list-style-type: none"> <li>Medical Unit contacts:             <ol style="list-style-type: none"> <li>Communications</li> <li>Safety</li> <li>Logistics</li> <li>Operations</li> <li>Crew Supervisor</li> <li>Comps/Claims</li> </ol> </li> <li>Communications will request local Med Unit if needed</li> </ul>		<p align="center"><b>INJURY REPORTING PROCEDURES</b></p> <p>NATURE OF INJURY _____          LOCATION OF PATIENT _____          POINT OF CONTACT _____          TRANSPORTATION REQUESTED BY: AIR ___ GROUND ___          POINT OF PICKUP _____          LAT _____ LONG _____          PATIENT UNIT ID _____          IS AN EMT WITH PATIENT: YES ___ NO ___          AGE _____          SEX: MALE ___ FEMALE ___          RESOURCE/UNIT ID _____</p> <p align="center"><b>ALL EMERGENCIES---Secure the area and identify witnesses for later investigation. Keep an accurate log of events.</b></p>	
--	--	--	--

ICS 206 (Rev 03/12)	9. PREPARED BY: (Medical Unit Leader) Dave Latham MEDL / Nick Gelos MEDL (t) 	10. REVIEWED BY: (Safety Officer) Kevin Twohey, Incident Safety Officer 
------------------------	---	--

***TRAINING SPECIALIST  
MESSAGE***

Tuesday, July 17<sup>th</sup>, 2012  
Robbers Fire

**ATTENTION TRAINEES!  
You should have already checked in  
and registered!**

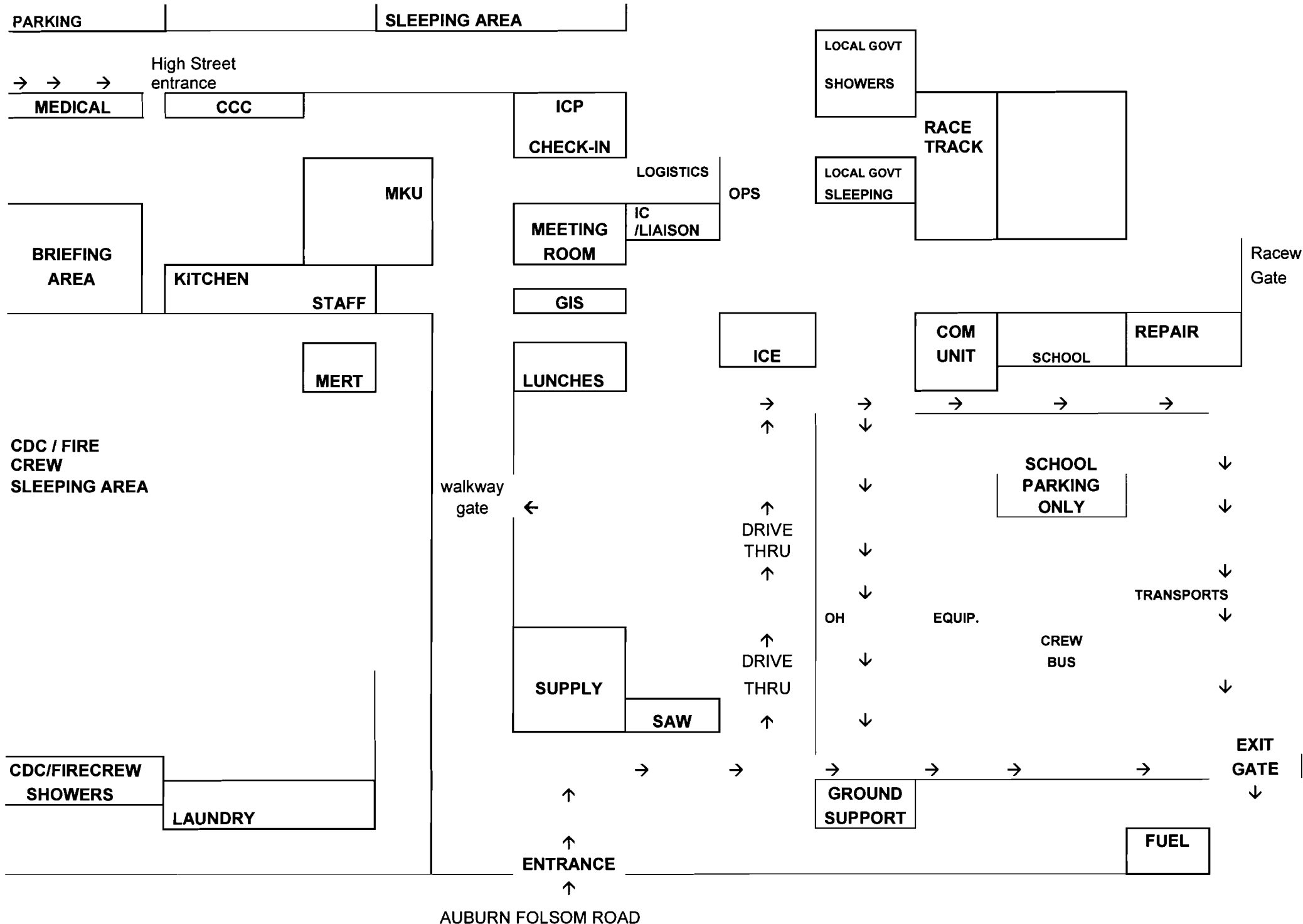
**Already signed in?  
Please visit the TNSP to pick up exit  
interview and evaluation documents.**

**The Training Specialist is located inside  
Placer Hall at the ICP/Base. Completing your  
paperwork now, will speed your Demob  
process!**

***Randy Titus***

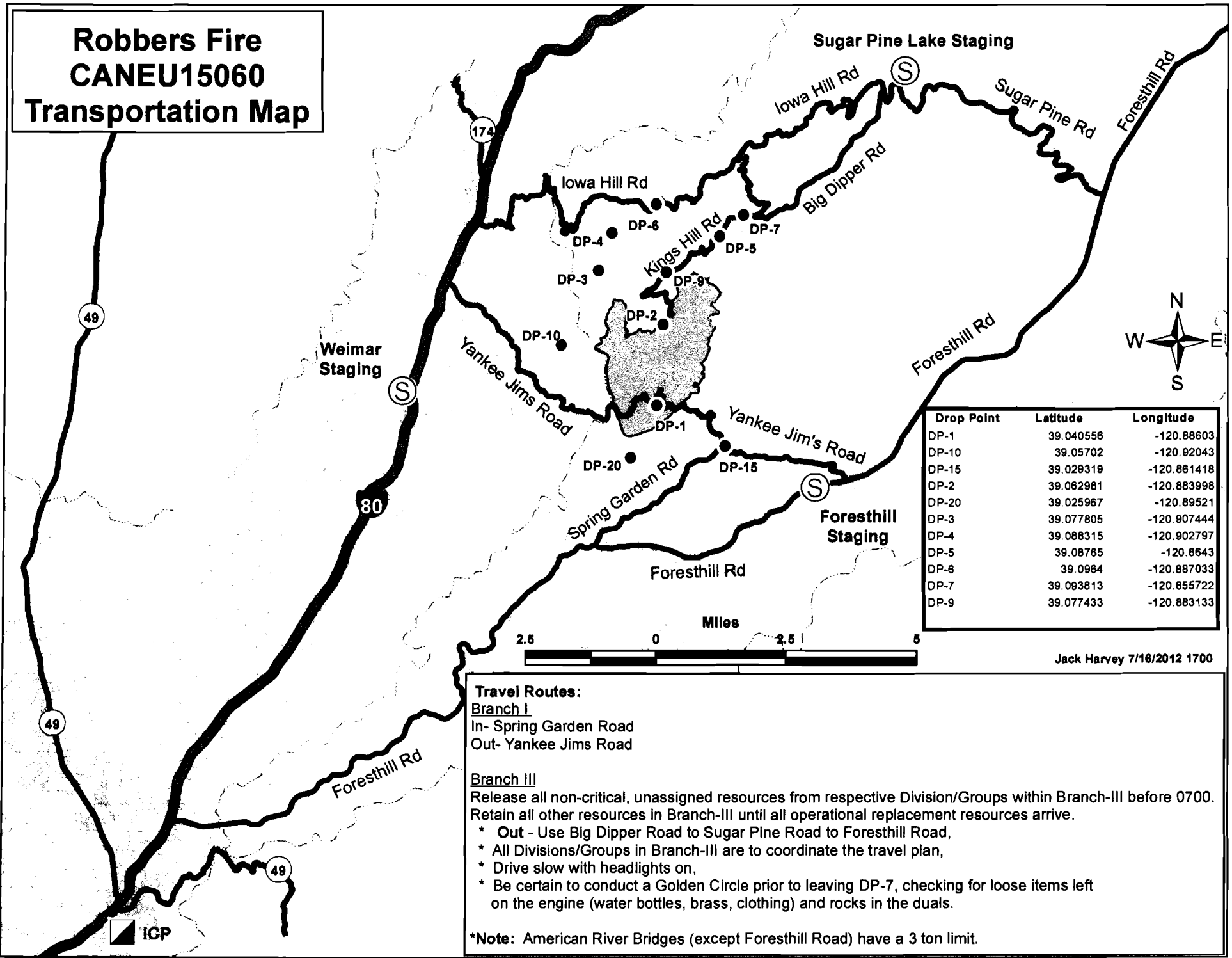
*Incident Management Team-5  
Training Specialist*





NOT TO SCALE

# Robbers Fire CANEU15060 Transportation Map



Drop Point	Latitude	Longitude
DP-1	39.040556	-120.88603
DP-10	39.05702	-120.92043
DP-15	39.029319	-120.861418
DP-2	39.062981	-120.883998
DP-20	39.025967	-120.89521
DP-3	39.077805	-120.907444
DP-4	39.088315	-120.902797
DP-5	39.08765	-120.8643
DP-6	39.0964	-120.887033
DP-7	39.093813	-120.855722
DP-9	39.077433	-120.883133

Jack Harvey 7/16/2012 1700

**Travel Routes:**  
Branch I  
 In- Spring Garden Road  
 Out- Yankee Jims Road

Branch III  
 Release all non-critical, unassigned resources from respective Division/Groups within Branch-III before 0700. Retain all other resources in Branch-III until all operational replacement resources arrive.

- \* **Out** - Use Big Dipper Road to Sugar Pine Road to Foresthill Road,
- \* All Divisions/Groups in Branch-III are to coordinate the travel plan,
- \* Drive slow with headlights on,
- \* Be certain to conduct a Golden Circle prior to leaving DP-7, checking for loose items left on the engine (water bottles, brass, clothing) and rocks in the duals.

**\*Note:** American River Bridges (except Foresthill Road) have a 3 ton limit.

ICP

**UNIT LOG    ICS-214**

1. INCIDENT NAME

2. DATE  
PREPARED3. TIME  
PREPARED

4. UNIT NAME/DESIGNATOR

5. UNIT LEADER (NAME AND POSITION)

6. OPERATIONAL PERIOD

## 7. PERSONNEL ROSTER ASSIGNED

NAME	ICS POSITION	HOME BASE

## 8. ACTIVITY LOG (CONTINUE ON REVERSE)

TIME	MAJOR EVENTS

