

120°55'W

120°54'W

120°53'W

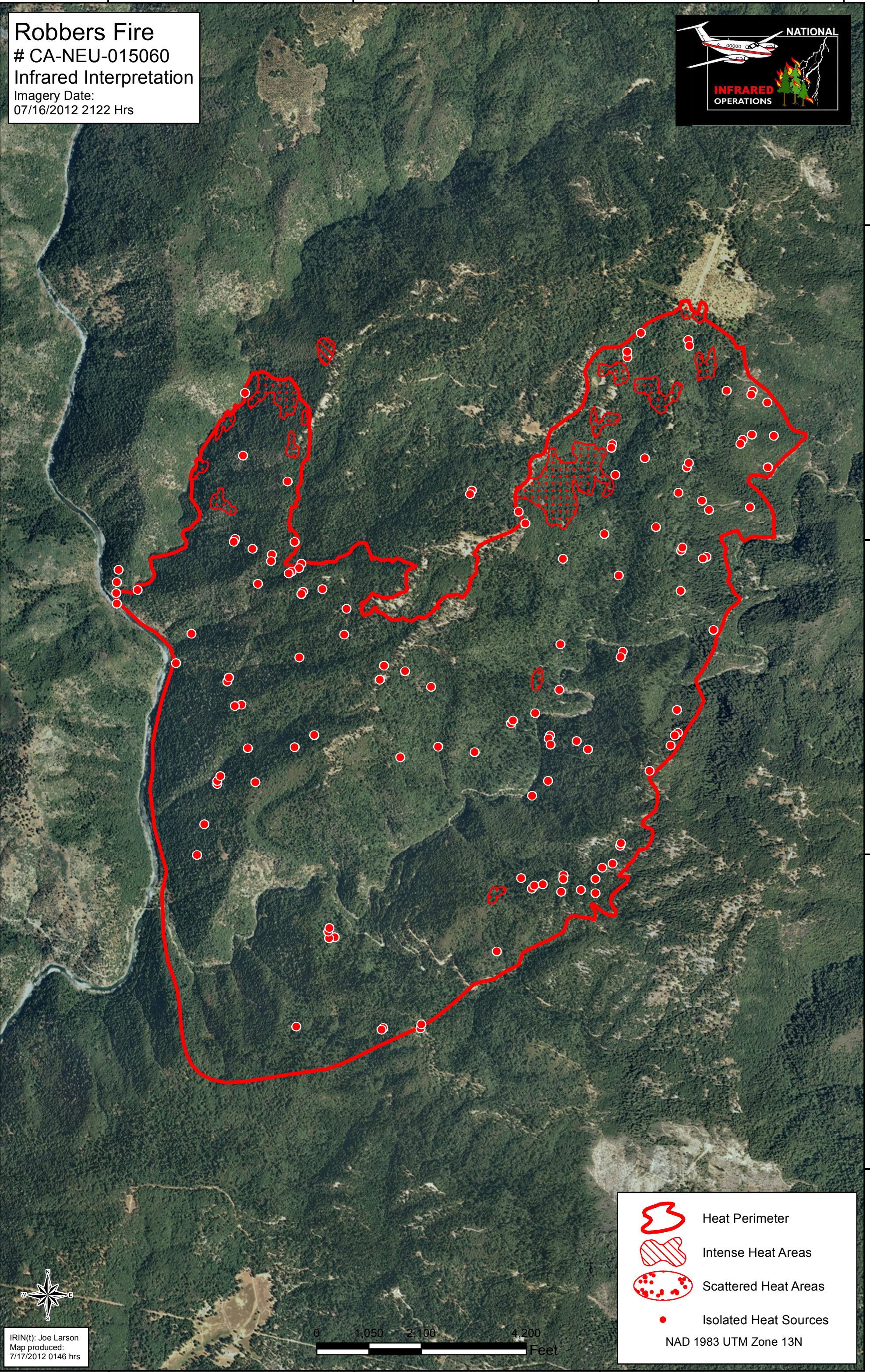
120°52'W

Robbers Fire
 # CA-NEU-015060
 Infrared Interpretation
 Imagery Date:
 07/16/2012 2122 Hrs

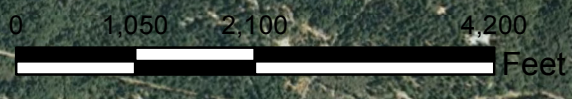






39°5'N
 39°4'N
 39°3'N
 39°2'N
 39°1'N

39°5'N
 39°4'N
 39°3'N
 39°2'N



IRIN(t): Joe Larson
 Map produced:
 7/17/2012 0146 hrs



-  Heat Perimeter
-  Intense Heat Areas
-  Scattered Heat Areas
-  Isolated Heat Sources

NAD 1983 UTM Zone 13N

120°54'W

120°53'W

120°52'W

120°51'W