

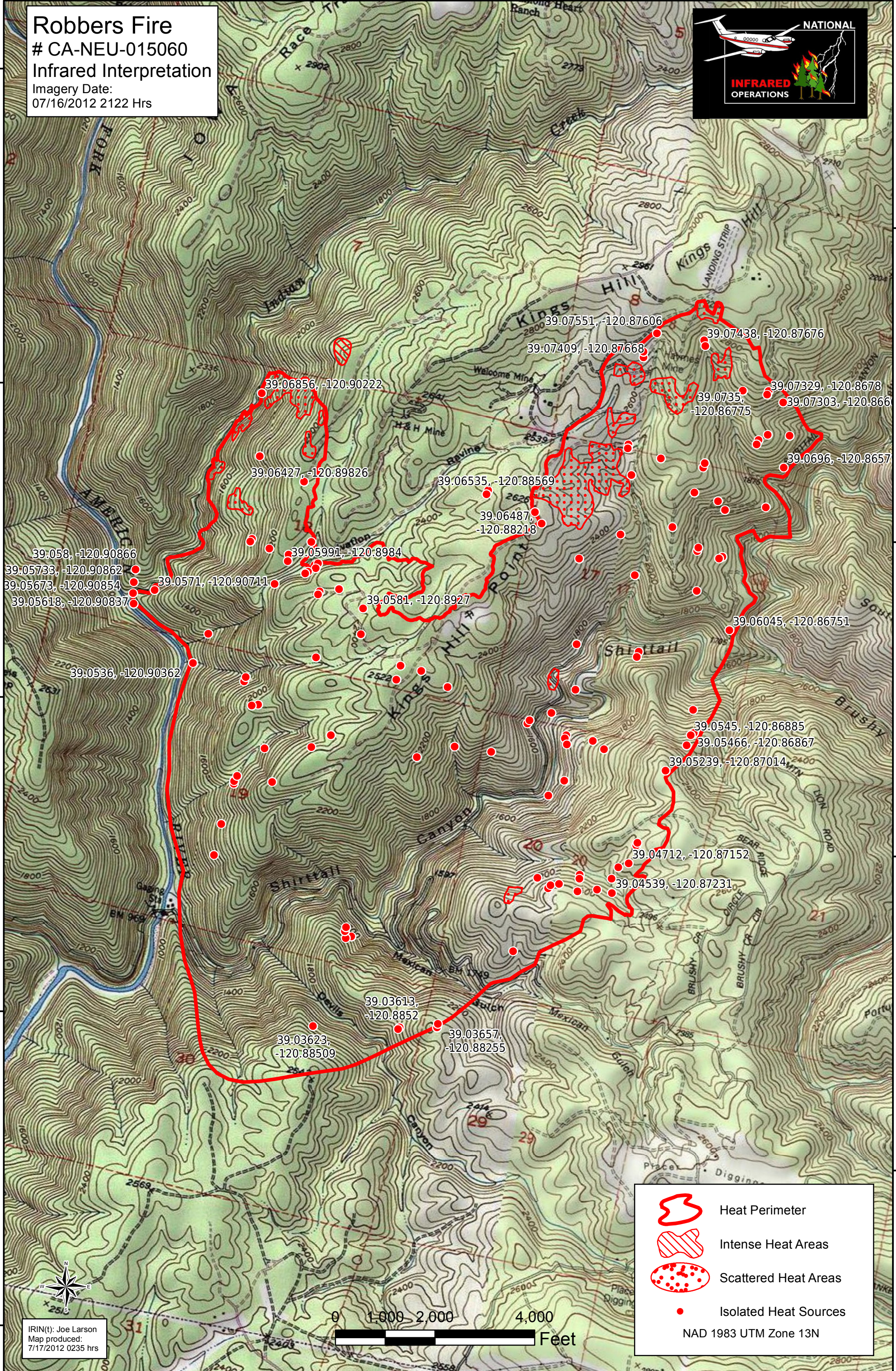
120°55'W

120°54'W

120°53'W

120°52'W

Robbers Fire
 # CA-NEU-015060
 Infrared Interpretation
 Imagery Date:
 07/16/2012 2122 Hrs



39.058, -120.90866
 39.05733, -120.90862
 39.05673, -120.90854
 39.05618, -120.90837

39.0571, -120.90711

39.06856, -120.90222

39.06427, -120.89826

39.05991, -120.8984

39.0581, -120.8927

39.0536, -120.90362

39.03623, -120.88509

39.03613, -120.8852

39.03657, -120.88255

39.07409, -120.87668

39.07551, -120.87606

39.07438, -120.87676

39.0735, -120.86775

39.07329, -120.8678

39.07303, -120.866

39.0696, -120.8657

39.06045, -120.86751





39.0545, -120.86885

39.05466, -120.86867

39.05239, -120.87014

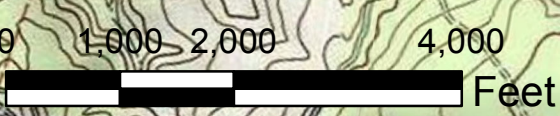
39.04712, -120.87152

39.04539, -120.87231

-  Heat Perimeter
-  Intense Heat Areas
-  Scattered Heat Areas
-  Isolated Heat Sources

NAD 1983 UTM Zone 13N

IRIN(t): Joe Larson
 Map produced:
 7/17/2012 0235 hrs



120°54'W

120°53'W

120°52'W

120°51'W

39°1'N

39°2'N

39°3'N

39°4'N

39°5'N

39°1'N

39°2'N

39°3'N

39°4'N

39°5'N