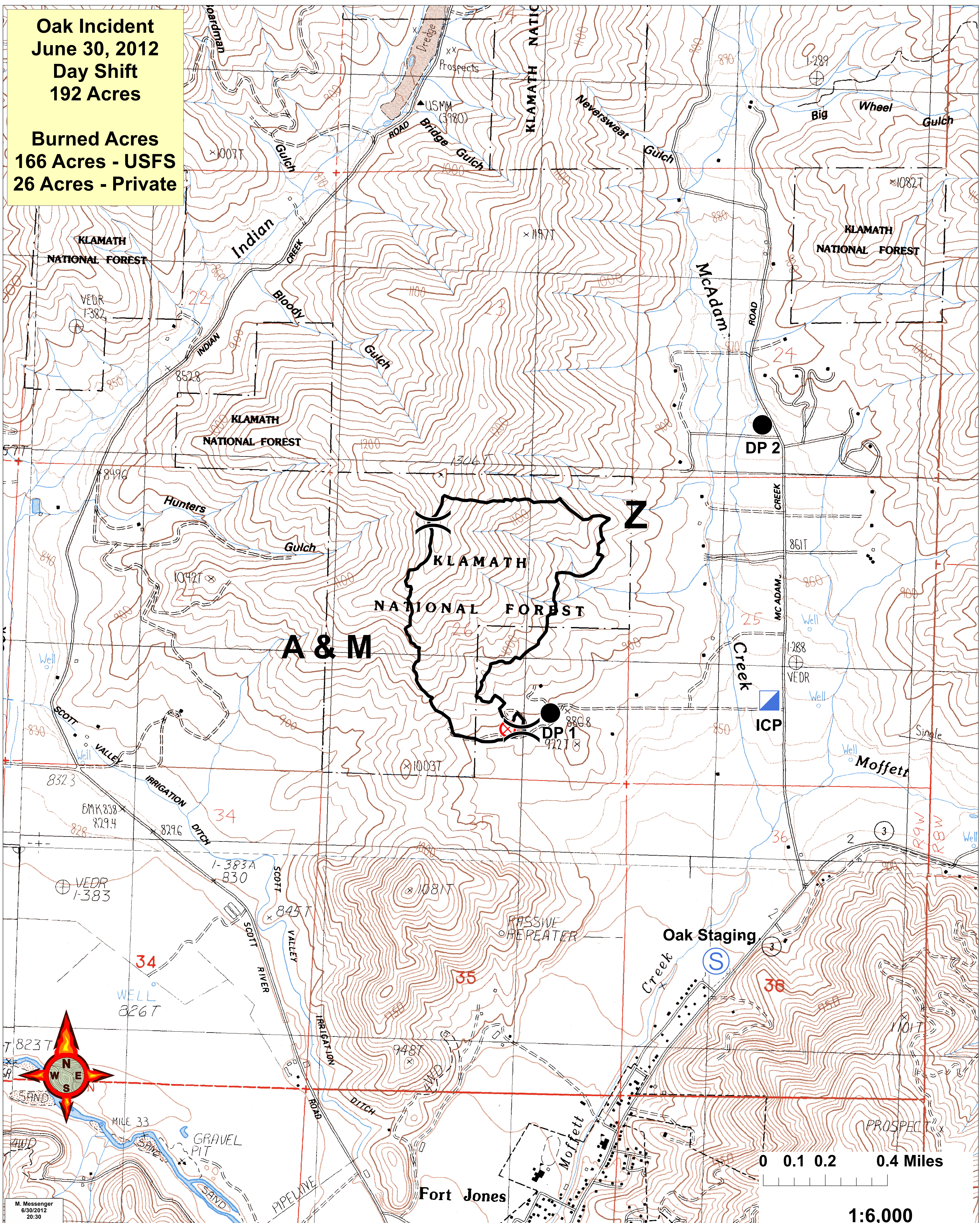


**Oak Incident  
June 30, 2012  
Day Shift  
192 Acres**

**Burned Acres  
166 Acres - USFS  
26 Acres - Private**



**A & M**

**KLAMATH  
NATIONAL FOREST**

**DP 2**

**DP 1**

**ICP**

**Oak Staging**

0 0.1 0.2 0.4 Miles

**1:6,000**