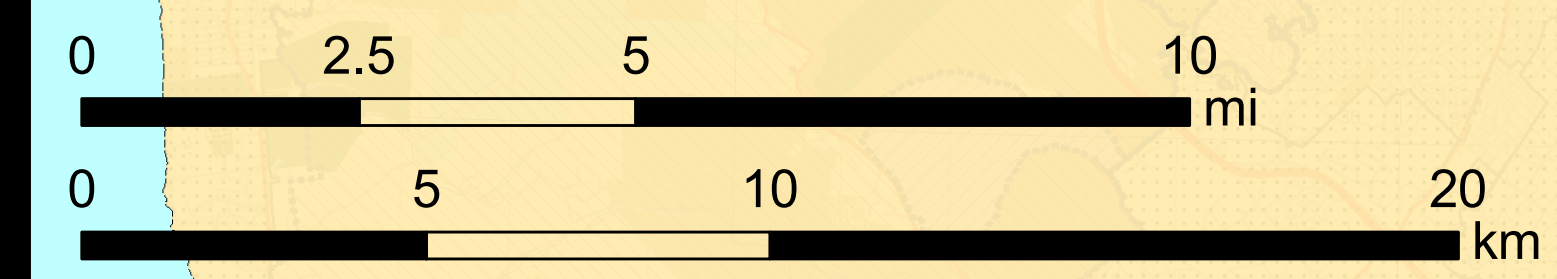
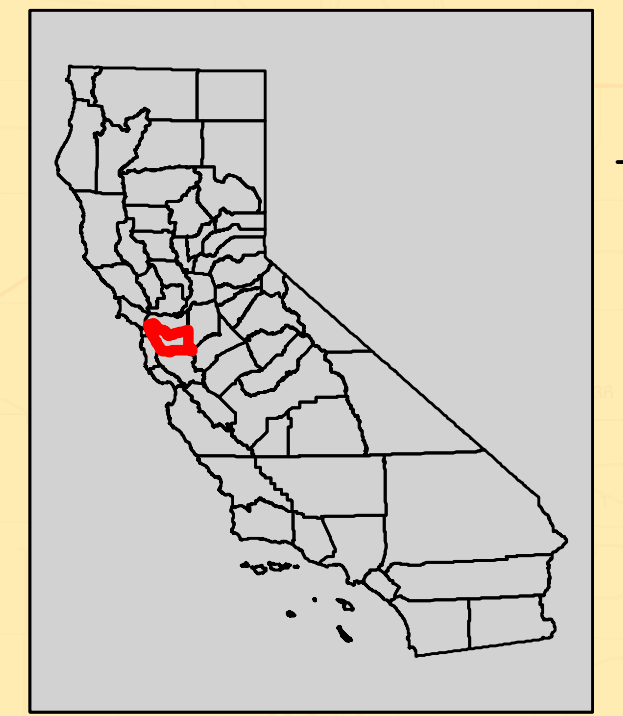
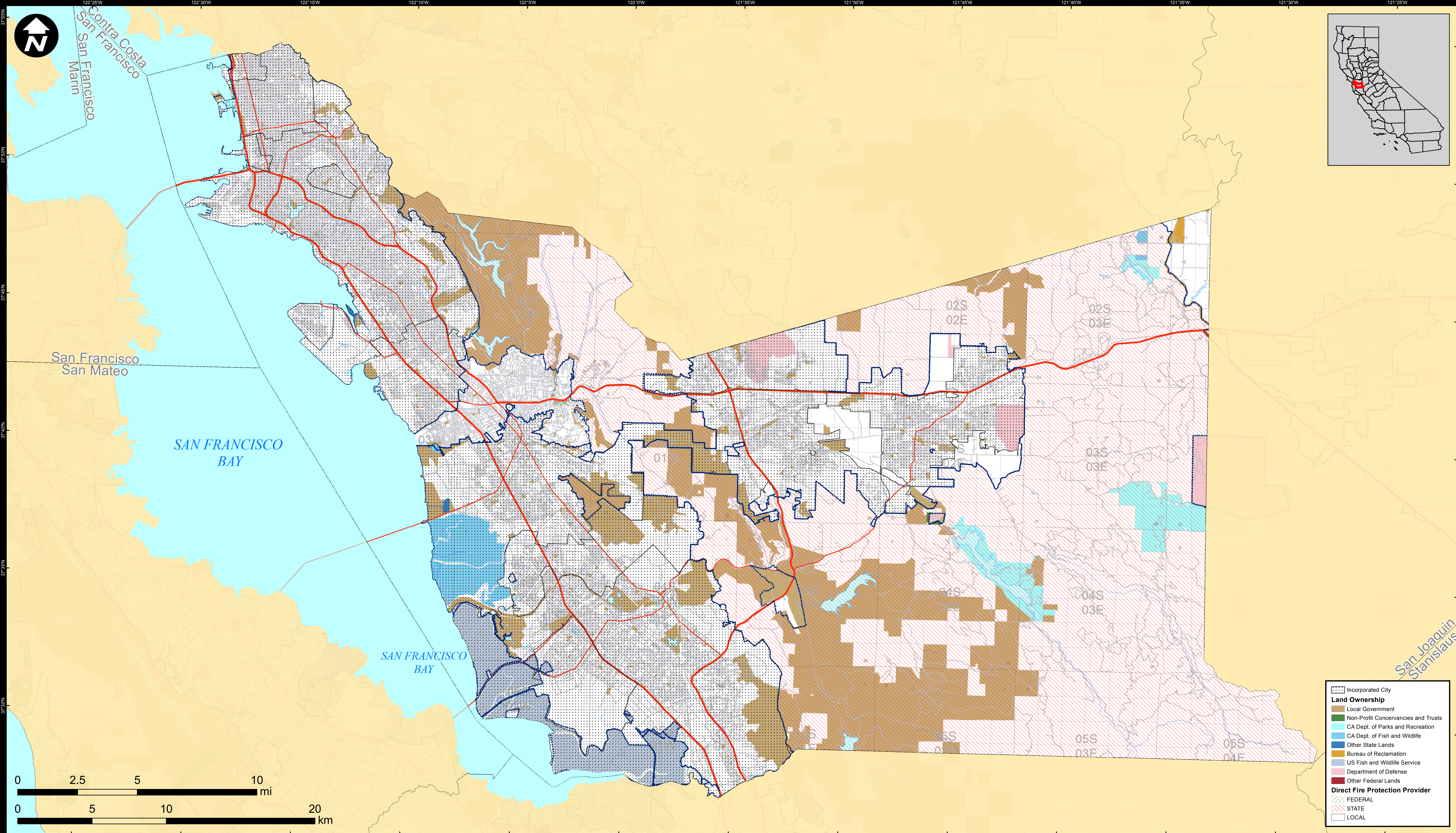
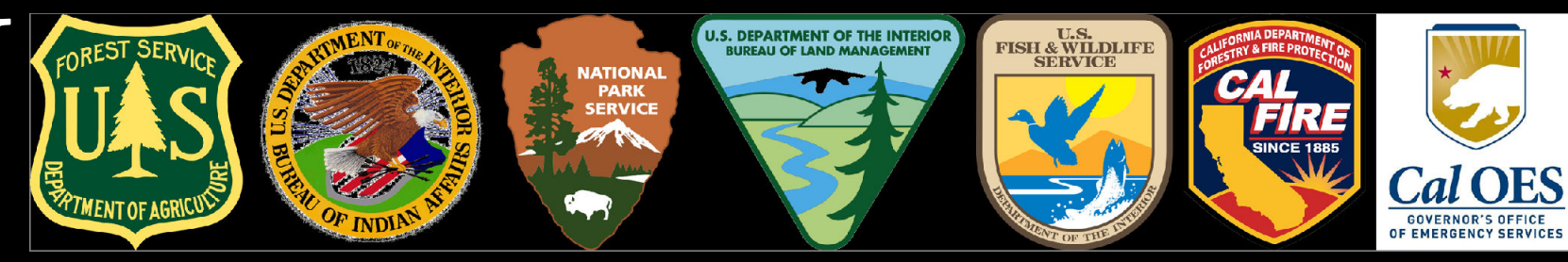


DIRECT PROTECTION AREAS for WILDLAND FIRE PROTECTION

Produced for the California Wildfire Coordinating Group



Incorporated City	
[Dotted pattern]	Incorporated City
Land Ownership	
[Light blue]	Local Government
[Light green]	Non-Profit Concernancies and Trusts
[Light cyan]	CA Dept. of Parks and Recreation
[Light blue]	CA Dept. of Fish and Wildlife
[Light blue]	Other State Lands
[Light blue]	Bureau of Reclamation
[Light blue]	US Fish and Wildlife Service
[Light blue]	Department of Defense
[Light blue]	Other Federal Lands
Direct Fire Protection Provider	
[Red diagonal lines]	FEDERAL
[Pink diagonal lines]	STATE
[White]	LOCAL

ALAMEDA COUNTY

Data Sources:
 Direct Protection Areas (DirectProtectionAreas16_3)
 Land Ownership (Ownership15_1)
 Incorporated Cities (Incorp14_2)
 DPA2016_CountyMaps_ArchD_land_20150305, 5/11/2016
 NAD 1983 California Teale Albers

DIRECT PROTECTION AREA
 That area which, by law or pursuant to the terms of a cooperative agreement, is provided wildland fire protection by the State, Local or Federal Agencies. Direct protection areas may include a mixture of State, Federal, and Local responsibility areas.

This map was produced by the USFS Region 5 Fire and Aviation GIS Lab. GIS data and product accuracy may vary. The Forest Service reserves the right to update, modify, or replace any or all of this data without notifying the users. USFS Region 5 Geospatial Data can be found at <http://www.fs.usda.gov/main/r5/landmanagement/gis>