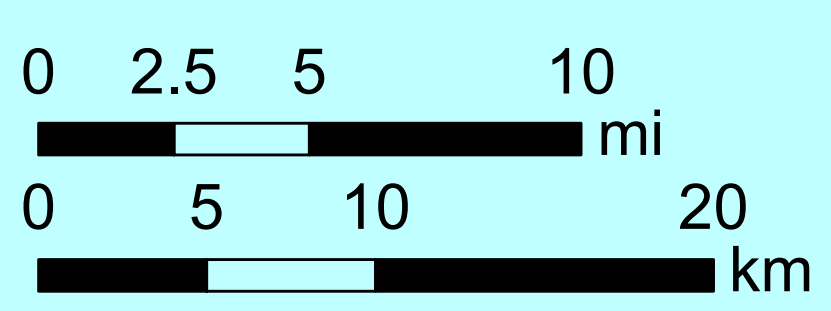
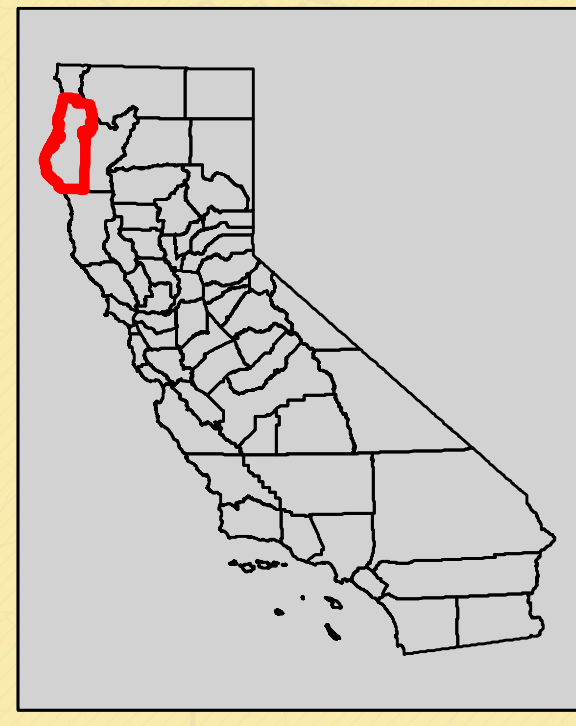
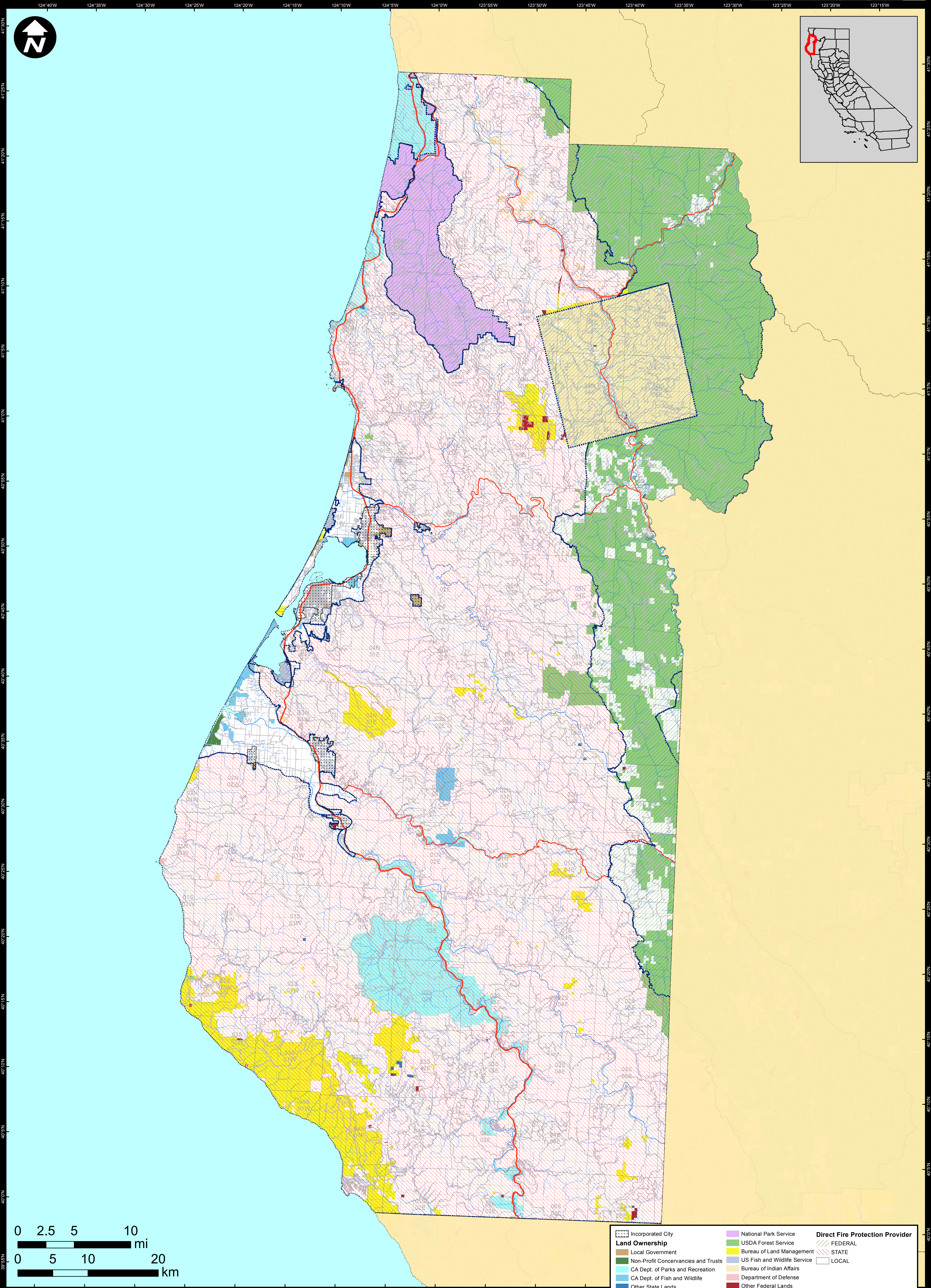


# DIRECT PROTECTION AREAS for WILDLAND FIRE PROTECTION

Produced for the California Wildfire Coordinating Group



Land Ownership		Direct Fire Protection Provider	
[Dotted pattern]	Incorporated City	[Purple hatched]	National Park Service
[Brown hatched]	Local Government	[Green hatched]	USDA Forest Service
[Dark green hatched]	Non-Profit Conservancies and Trusts	[Yellow hatched]	Bureau of Land Management
[Light blue hatched]	CA Dept. of Parks and Recreation	[Blue hatched]	US Fish and Wildlife Service
[Light blue hatched]	CA Dept. of Fish and Wildlife	[Tan hatched]	Bureau of Indian Affairs
[Dark blue hatched]	Other State Lands	[Red hatched]	Department of Defense
		[Red hatched]	Other Federal Lands
		[Green hatched]	FEDERAL
		[Red hatched]	STATE
		[White hatched]	LOCAL

**HUMBOLDT COUNTY**

Data Sources:  
 Direct Protection Areas (DirectProtectionAreas16\_3)  
 Land Ownership (Ownership15\_1)  
 Incorporated Cities (Incorp14\_2)  
 DPA2016 CountyMaps\_ArchD\_port\_20160511, 5/11/2016  
 NAD 1983 California Teale Albers

**DIRECT PROTECTION AREA**  
 That area which, by law or pursuant to the terms of a cooperative agreement, is provided wildland fire protection by the State, Local or Federal Agencies. Direct protection areas may include a mixture of State, Federal, and Local responsibility

This map was produced by the USFS Region 5 Fire and Aviation GIS Lab. GIS data and product accuracy may vary. The Forest Service reserves the right to update, modify, or replace any or all of this data without notifying the users. USFS Region 5 Geospatial Data can be found at <http://www.fs.usda.gov/main/r5/landmanagement/gis>