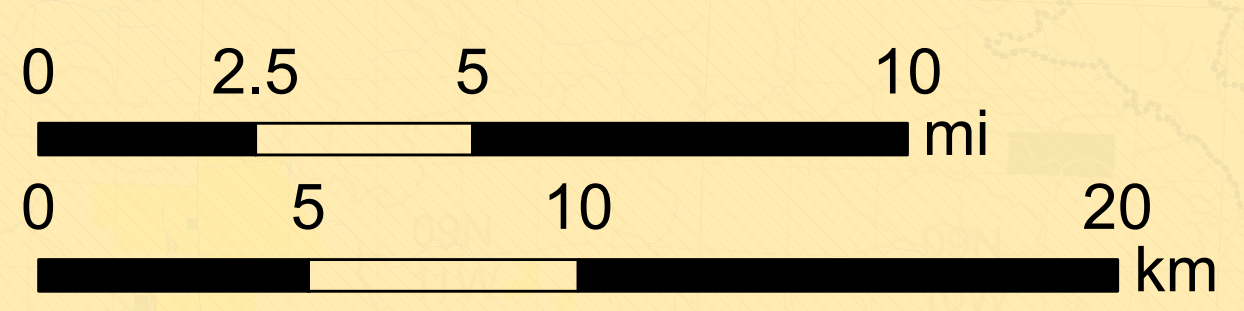
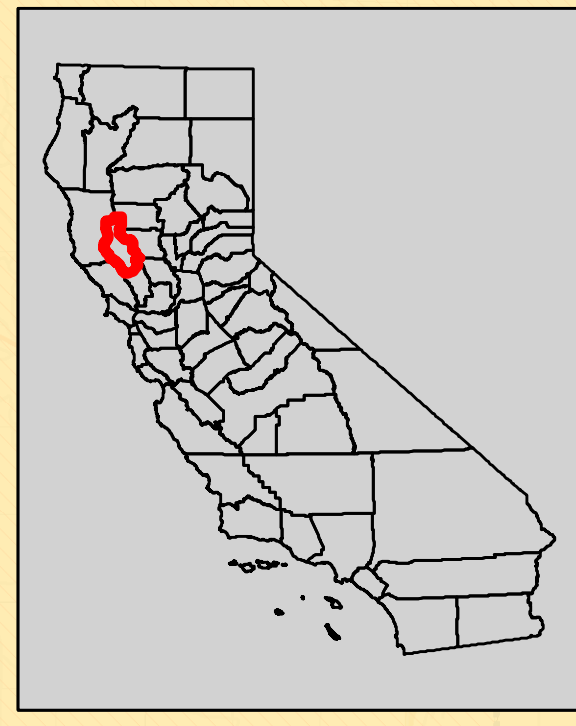
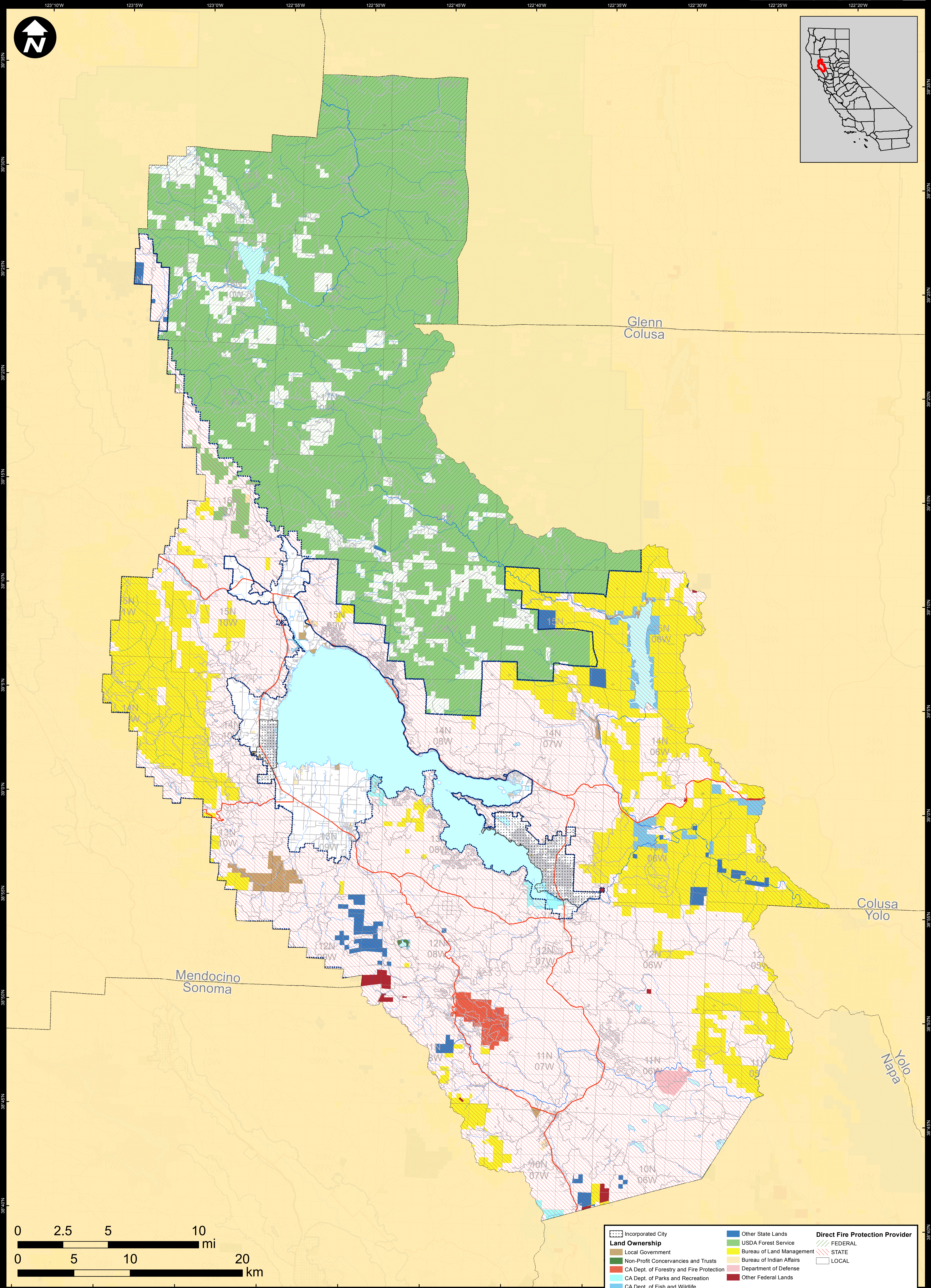


# DIRECT PROTECTION AREAS for WILDLAND FIRE PROTECTION

Produced for the California Wildfire Coordinating Group



Land Ownership		Direct Fire Protection Provider	
	Incorporated City		Other State Lands
	Local Government		USDA Forest Service
	Non-Profit Concernancies and Trusts		Bureau of Land Management
	CA Dept. of Forestry and Fire Protection		Bureau of Indian Affairs
	CA Dept. of Parks and Recreation		Department of Defense
	CA Dept. of Fish and Wildlife		Other Federal Lands
	FEDERAL		STATE
	STATE		LOCAL
	LOCAL		

**LAKE COUNTY**

Data Sources:  
 Direct Protection Areas (DirectProtectionAreas16\_3)  
 Land Ownership (Ownership15\_1)  
 Incorporated Cities (Incorp14\_2)  
 DPA2016\_CountyMaps\_ArchD\_port\_20160511, 5/11/2016  
 NAD 1983 California Teale Albers

**DIRECT PROTECTION AREA**  
 That area which, by law or pursuant to the terms of a cooperative agreement, is provided wildland fire protection by the State, Local or Federal Agencies. Direct protection areas may include a mixture of State, Federal, and Local responsibility

This map was produced by the USFS Region 5 Fire and Aviation GIS Lab. GIS data and product accuracy may vary. The Forest Service reserves the right to update, modify, or replace any or all of this data without notifying the users. USFS Region 5 Geospatial Data can be found at <http://www.fs.usda.gov/main/r5/landmanagement/gis>