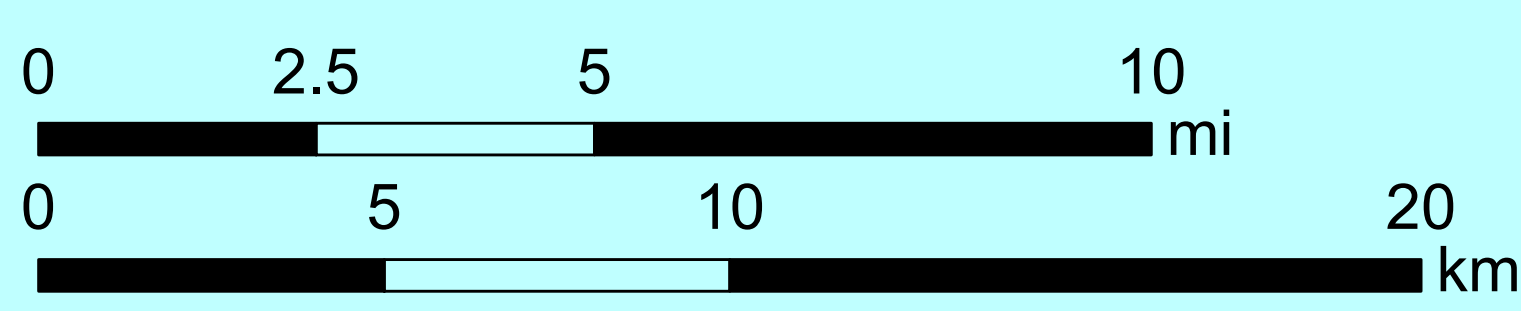
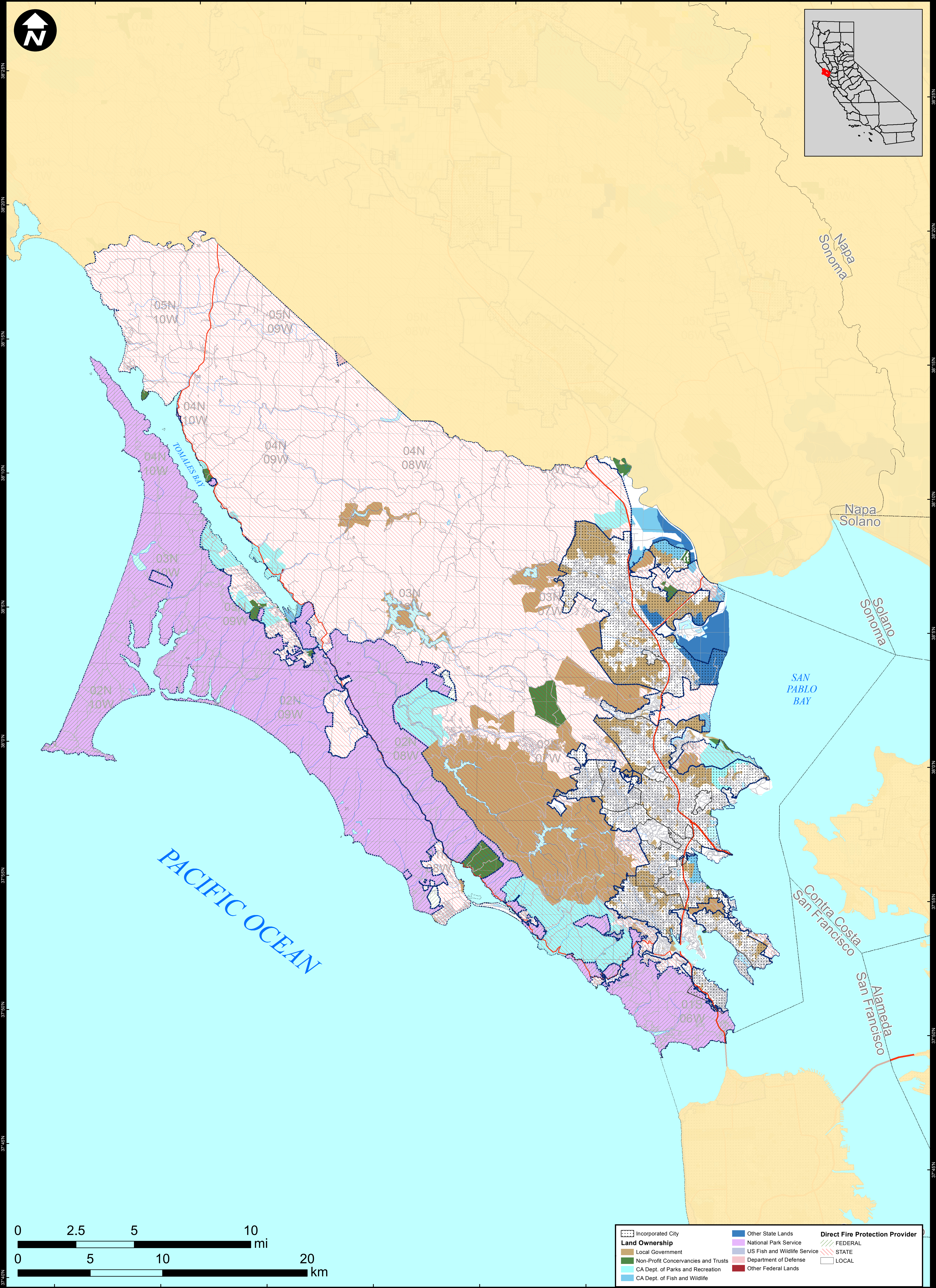


DIRECT PROTECTION AREAS for WILDLAND FIRE PROTECTION

Produced for the California Wildfire Coordinating Group



123°0'W 122°55'W 122°50'W 122°45'W 122°40'W 122°35'W 122°30'W 122°25'W



Land Ownership		Direct Fire Protection Provider	
Incorporated City	Other State Lands	FEDERAL	STATE
Local Government	National Park Service	US Fish and Wildlife Service	LOCAL
Non-Profit Conservancies and Trusts	US Fish and Wildlife Service	Department of Defense	
CA Dept. of Parks and Recreation	CA Dept. of Fish and Wildlife	Other Federal Lands	

MARIN COUNTY

Data Sources:
 Direct Protection Areas (DirectProtectionAreas16_3)
 Land Ownership (Ownership15_1)
 Incorporated Cities (Incorp14_2)
 DPA2016_CountyMaps_ArchD_port_20160511, 5/11/2016
 NAD 1983 California Teale Albers

DIRECT PROTECTION AREA
 That area which, by law or pursuant to the terms of a cooperative agreement, is provided wildland fire protection by the State, Local or Federal Agencies. Direct protection areas may include a mixture of State, Federal, and Local responsibility

This map was produced by the USFS Region 5 Fire and Aviation GIS Lab. GIS data and product accuracy may vary. The Forest Service reserves the right to update, modify, or replace any or all of this data without notifying the users. USFS Region 5 Geospatial Data can be found at <http://www.fs.usda.gov/main/r5/landmanagement/gis>

123°0'W 122°55'W 122°50'W 122°45'W 122°40'W 122°35'W 122°30'W 122°25'W