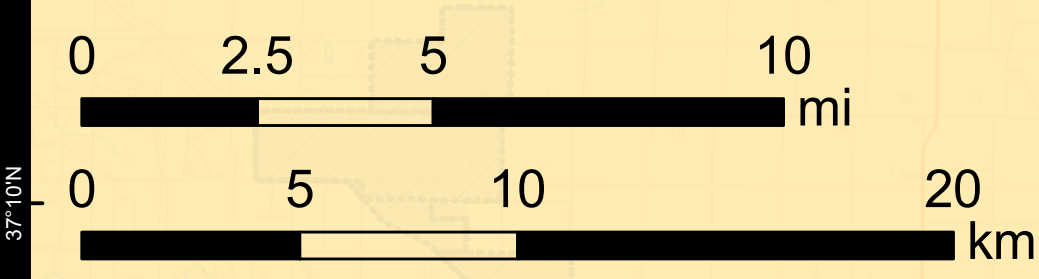
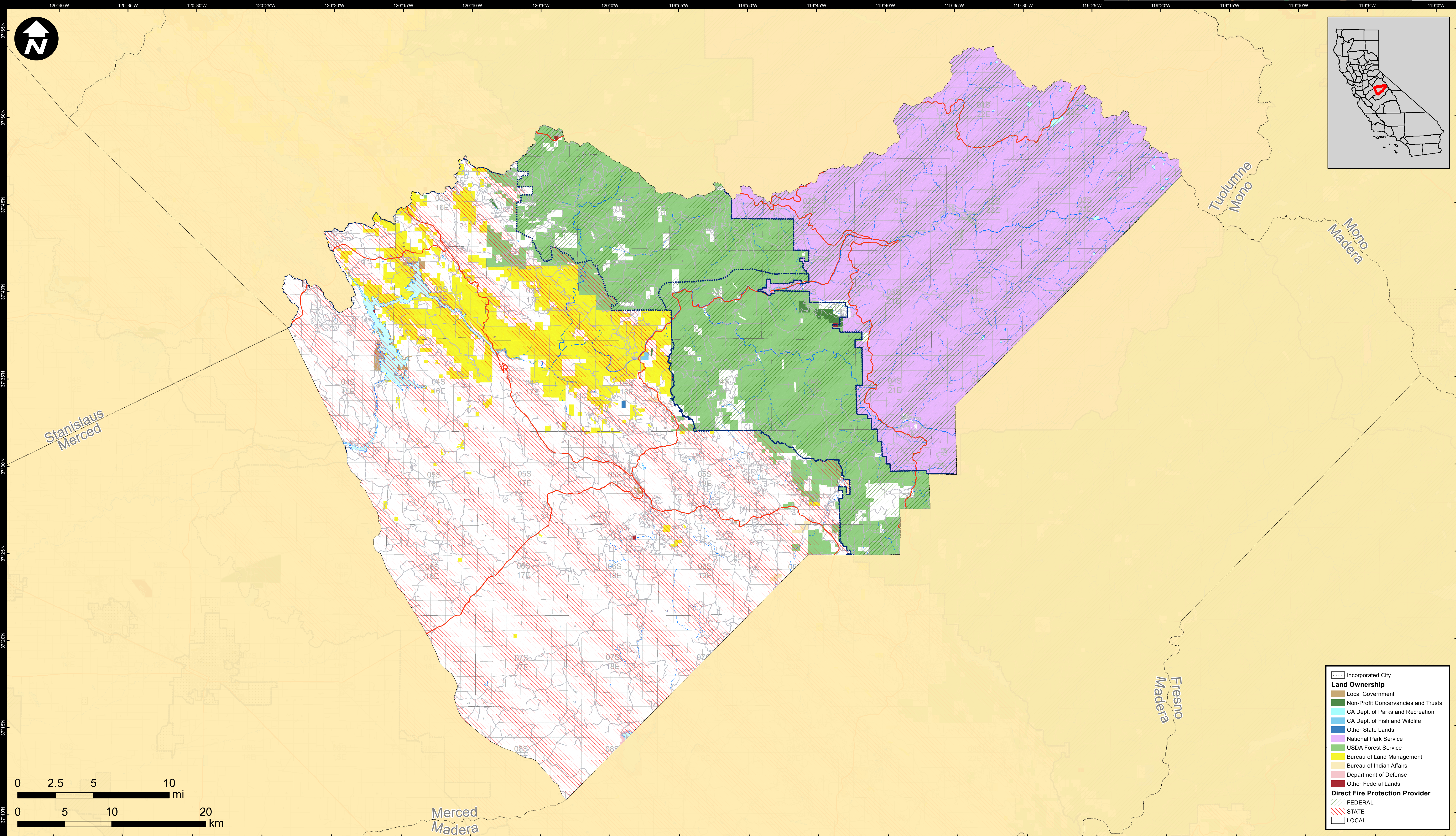


DIRECT PROTECTION AREAS for WILDLAND FIRE PROTECTION

Produced for the California Wildfire Coordinating Group



[Dotted pattern]	Incorporated City
Land Ownership	
[Brown]	Local Government
[Green]	Non-Profit Conservancies and Trusts
[Light Blue]	CA Dept. of Parks and Recreation
[Dark Blue]	CA Dept. of Fish and Wildlife
[Light Blue]	Other State Lands
[Purple]	National Park Service
[Yellow]	USDA Forest Service
[Light Green]	Bureau of Land Management
[Light Green]	Bureau of Indian Affairs
[Light Green]	Department of Defense
[Light Green]	Other Federal Lands
Direct Fire Protection Provider	
[Red]	FEDERAL
[Blue]	STATE
[White]	LOCAL

MARIPOSA COUNTY

Data Sources:
 Direct Protection Areas (DirectProtectionAreas16_3)
 Land Ownership (Ownership15_1)
 Incorporated Cities (Incorp14_2)
 DPA2016_CountyMaps_ArchD_land_20160511_5/11/2016
 NAD 1983 California Teale Albers

DIRECT PROTECTION AREA
 That area which, by law or pursuant to the terms of a cooperative agreement, is provided wildland fire protection by the State, Local or Federal agencies. Direct protection areas may include a mixture of State, Federal, and Local responsibility areas.

This map was produced by the USFS Region 5 Fire and Aviation GIS Lab. GIS data and product accuracy may vary. The Forest Service reserves the right to update, modify, or replace any or all of this data without notifying the users. USFS Region 5 Geospatial Data can be found at <http://www.fs.usda.gov/main/r5/landmanagement/gis>