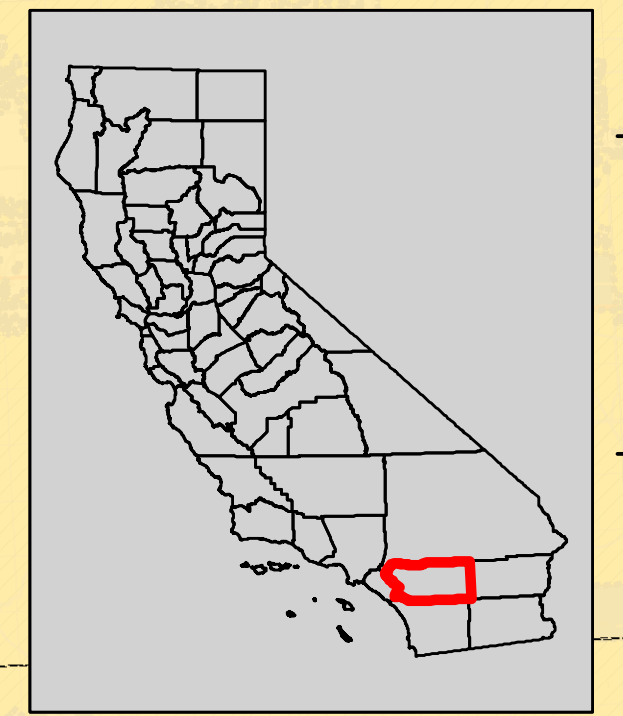
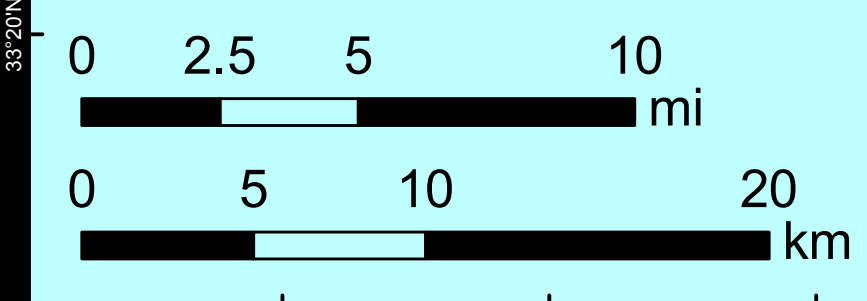
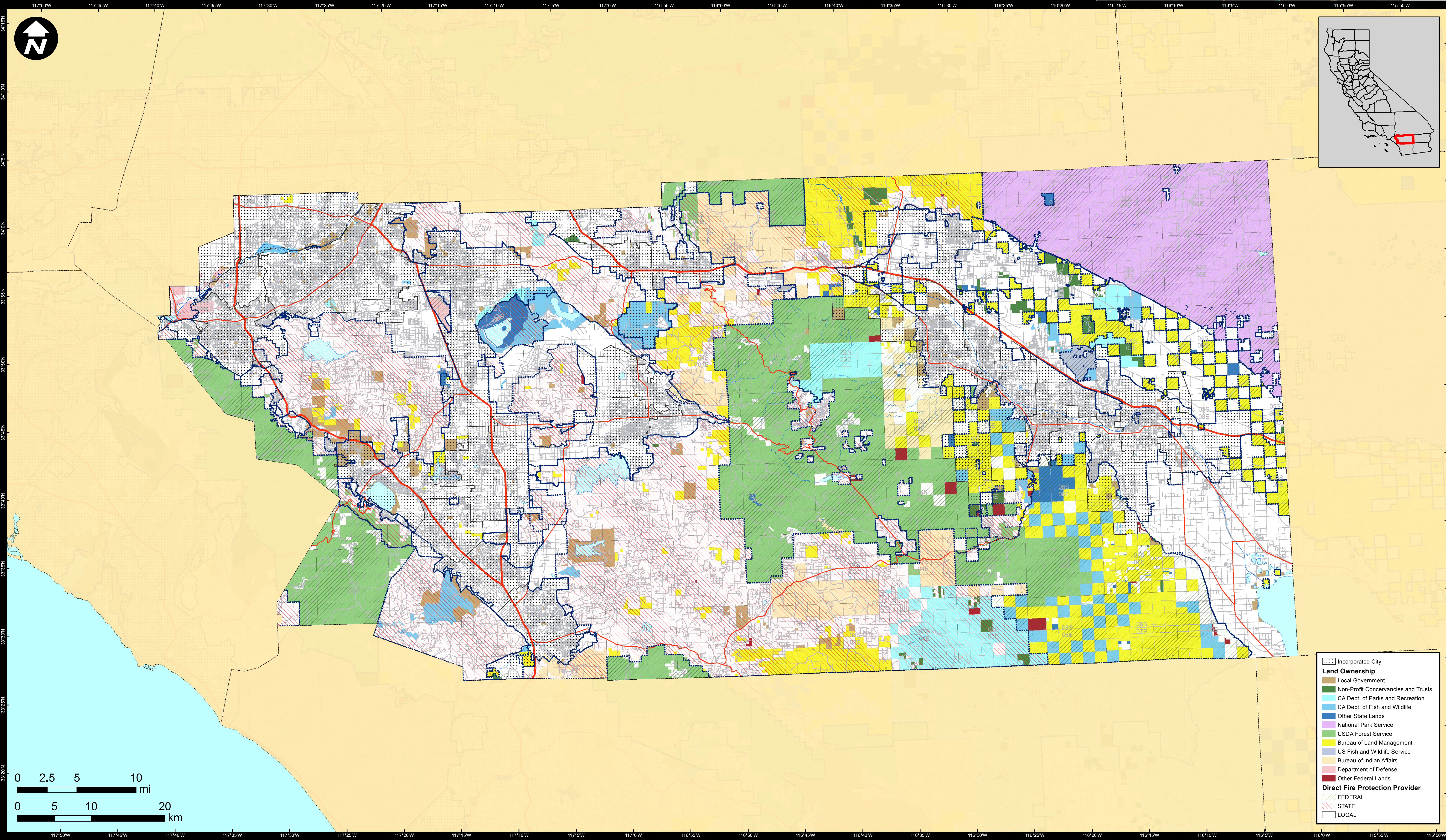


DIRECT PROTECTION AREAS for WILDLAND FIRE PROTECTION

Produced for the California Wildfire Coordinating Group



	Incorporated City
Land Ownership	
	Local Government
	Non-Profit Concervancies and Trusts
	CA Dept. of Parks and Recreation
	CA Dept. of Fish and Wildlife
	Other State Lands
	National Park Service
	USDA Forest Service
	Bureau of Land Management
	US Fish and Wildlife Service
	Bureau of Indian Affairs
	Department of Defense
	Other Federal Lands
Direct Fire Protection Provider	
	FEDERAL
	STATE
	LOCAL

RIVERSIDE COUNTY WEST

Data Sources:
 Direct Protection Areas (DirectProtectionAreas16_3)
 Land Ownership (Ownership15_1)
 Incorporated Cities (Incorp14_2)
 DPA2016_CountyMaps_ArchD_land_20160511_5/11/2016
 NAD 1983 California Teale Albers

DIRECT PROTECTION AREA
 That area which, by law or pursuant to the terms of a cooperative agreement, is provided wildland fire protection by the State, Local or Federal Agencies. Direct protection areas may include a mixture of State, Federal, and Local responsibility areas.

This map was produced by the USFS Region 5 Fire and Aviation GIS Lab. GIS data and product accuracy may vary. The Forest Service reserves the right to update, modify, or replace any or all of this data without notifying the users. USFS Region 5 Geospatial Data can be found at <http://www.fs.usda.gov/main/r5/landmanagement/gis>