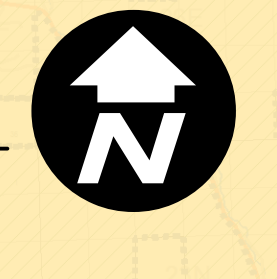
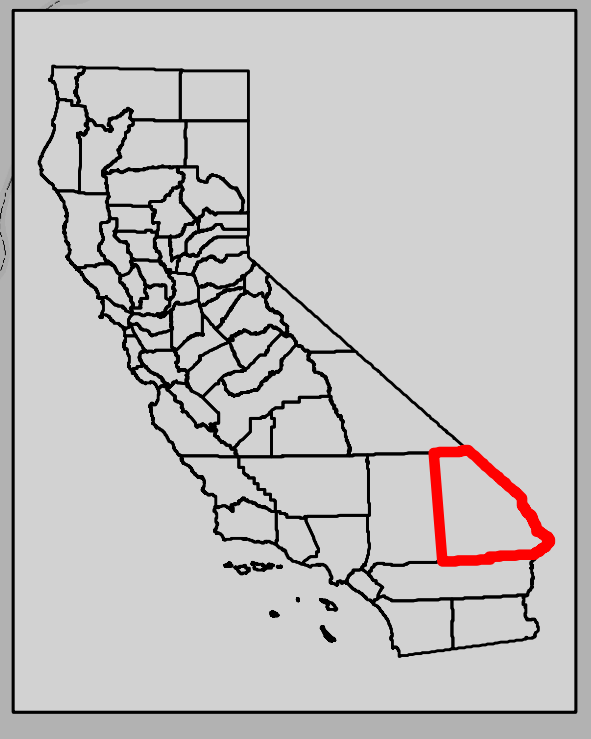
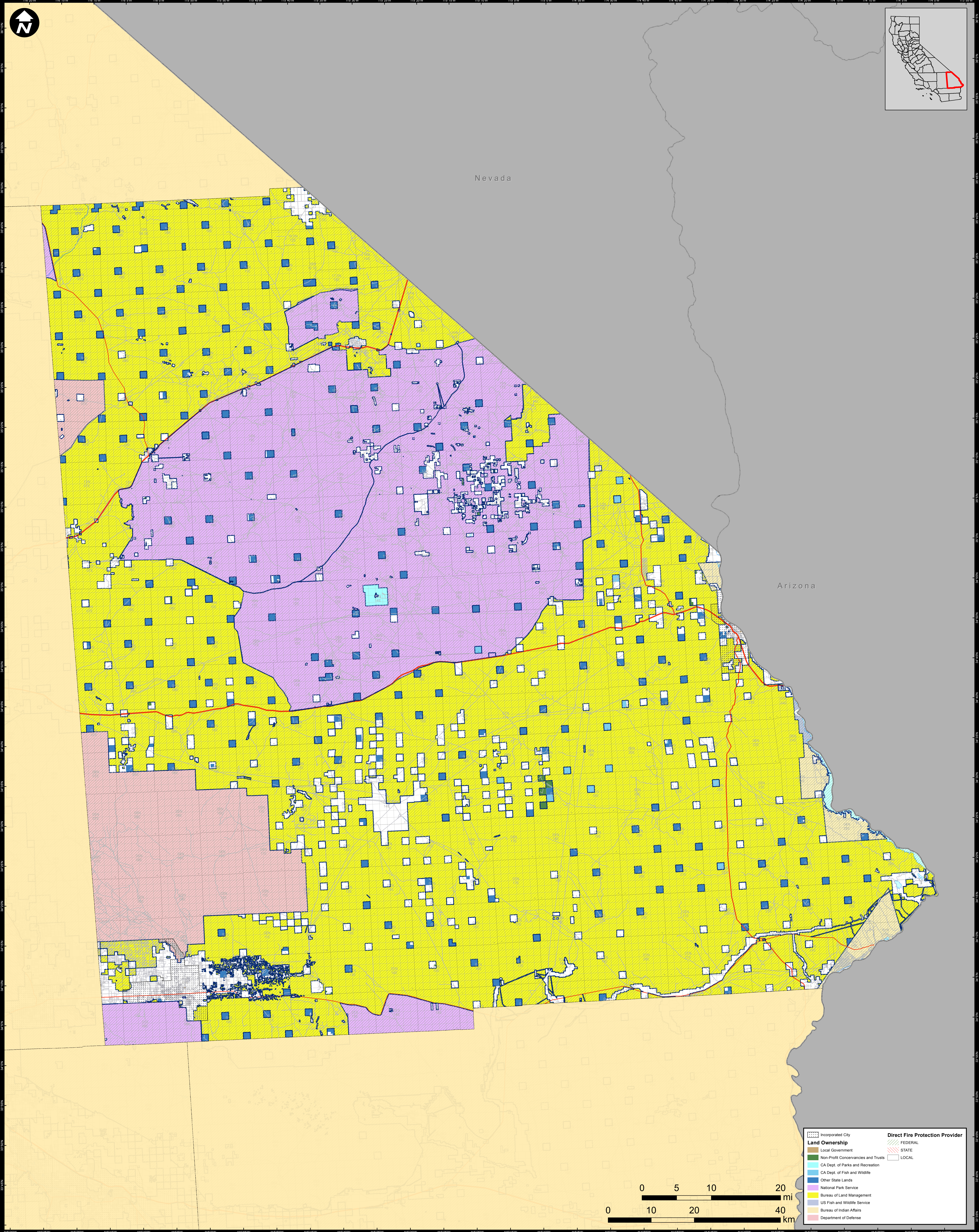
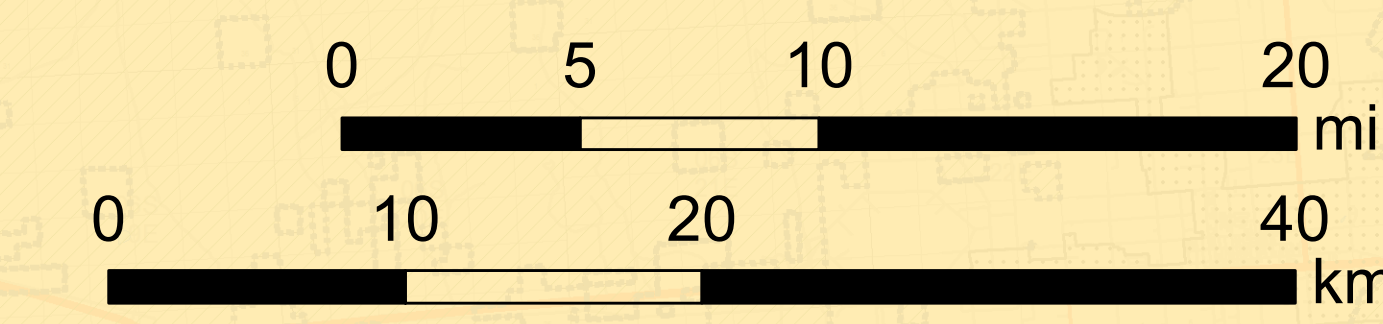


DIRECT PROTECTION AREAS for WILDLAND FIRE PROTECTION

Produced for the California Wildfire Coordinating Group



SAN BERNARDINO COUNTY EAST



| Land Ownership | | Direct Fire Protection Provider | |
|----------------|-----------------------------------|---------------------------------|---------|
| [Pattern] | Incorporated City | [Pattern] | FEDERAL |
| [Pattern] | Local Government | [Pattern] | STATE |
| [Pattern] | Non-Profit Concessions and Trusts | [Pattern] | LOCAL |
| [Pattern] | CA Dept. of Parks and Recreation | [Pattern] | |
| [Pattern] | CA Dept. of Fish and Wildlife | [Pattern] | |
| [Pattern] | Other State Lands | [Pattern] | |
| [Pattern] | National Park Service | [Pattern] | |
| [Pattern] | Bureau of Land Management | [Pattern] | |
| [Pattern] | US Fish and Wildlife Service | [Pattern] | |
| [Pattern] | Bureau of Indian Affairs | [Pattern] | |
| [Pattern] | Department of Defense | [Pattern] | |

Data Sources: Direct Protection Areas (DirectProtectionAreas16_3), Land Ownership (Ownership15_1), Incorporated Cities (Incorp14_2). This map was produced by the USFS Region 5 Fire and Aviation GIS Lab. GIS data and product accuracy may vary. The Forest Service reserves the right to update, modify, or replace any or all of this data without notifying the users. USFS Region 5 Geospatial Data can be found at: [http://www.fs.fed.us/r5/gis/](#)