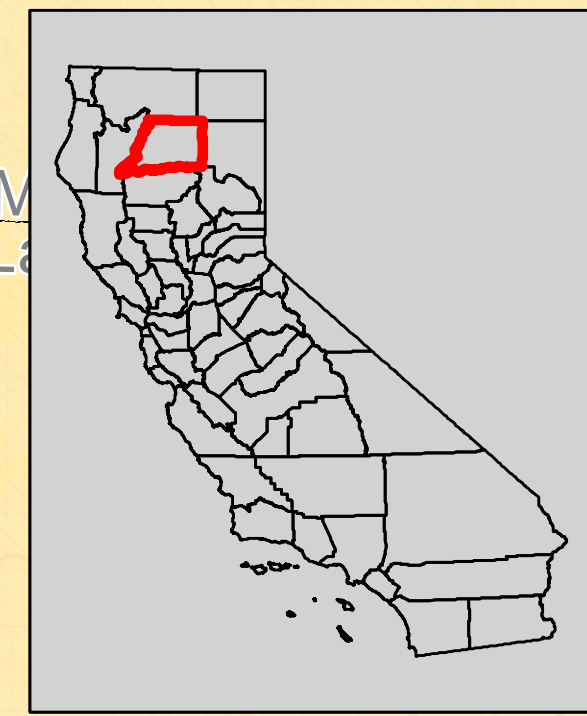
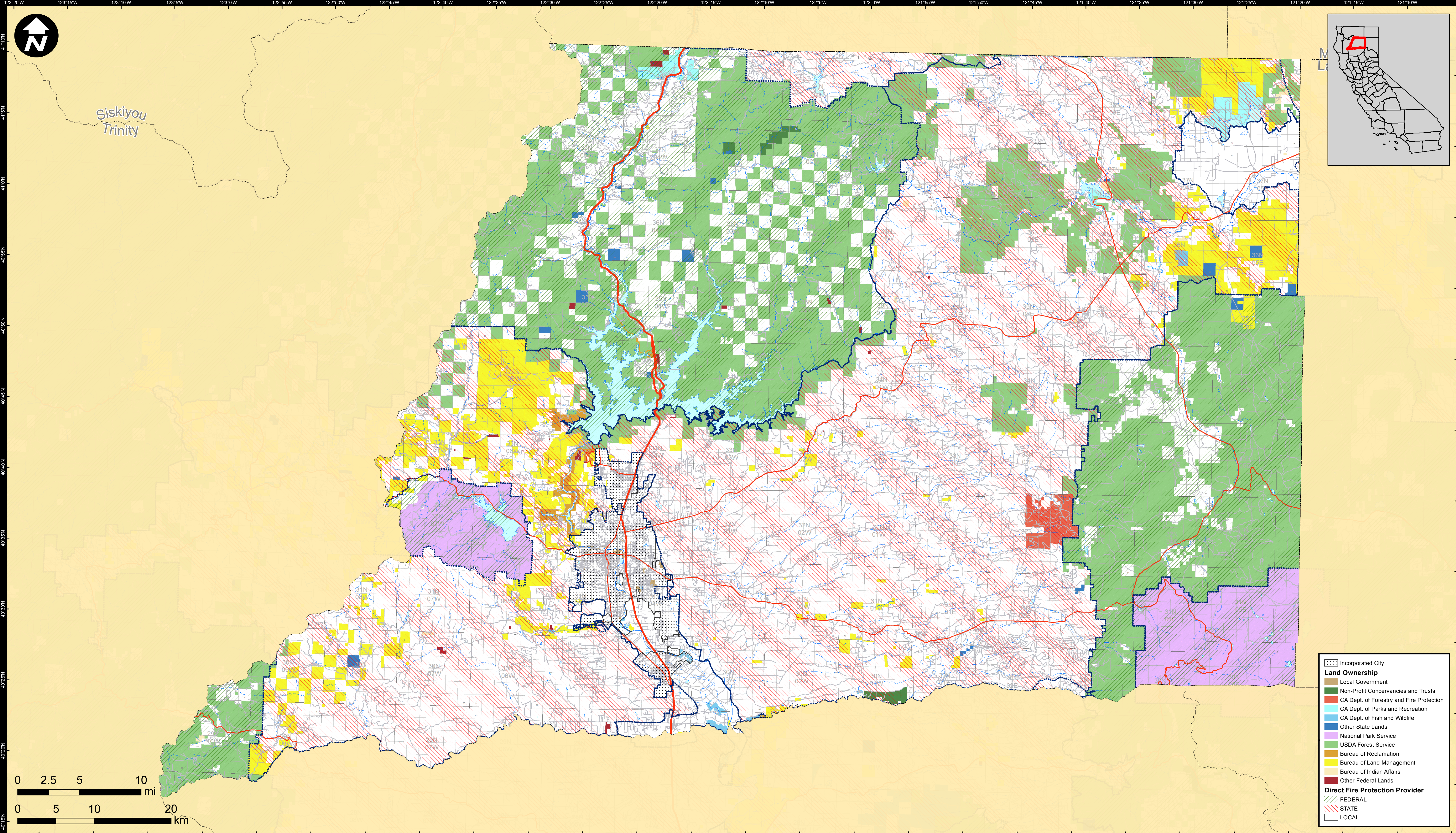
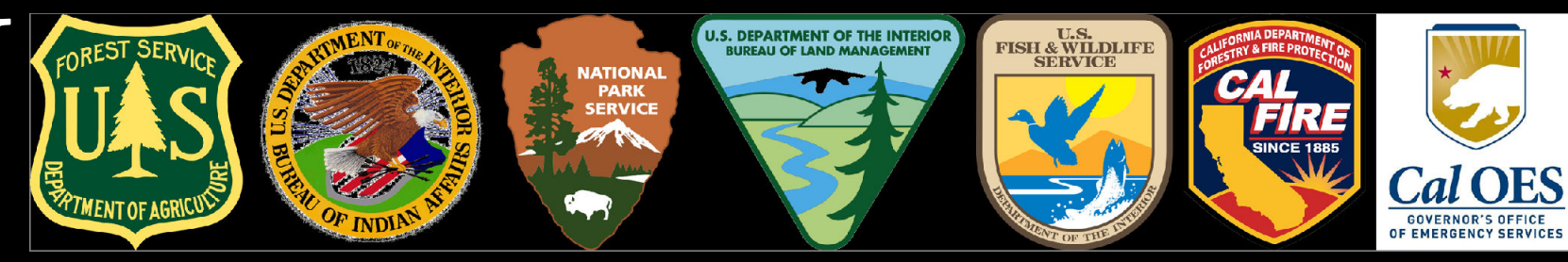


DIRECT PROTECTION AREAS for WILDLAND FIRE PROTECTION

Produced for the California Wildfire Coordinating Group



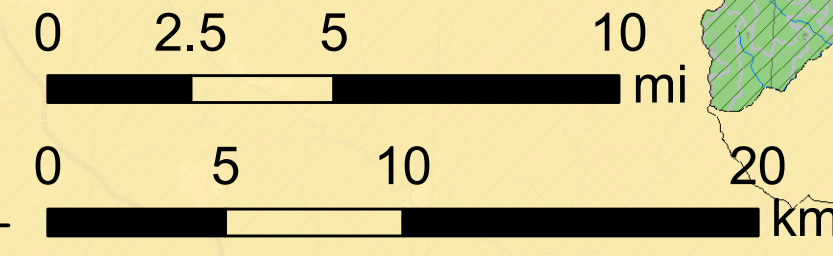
Incorporated City

Land Ownership

- Local Government
- Non-Profit Concerancies and Trusts
- CA Dept. of Forestry and Fire Protection
- CA Dept. of Parks and Recreation
- CA Dept. of Fish and Wildlife
- Other State Lands
- National Park Service
- USDA Forest Service
- Bureau of Reclamation
- Bureau of Land Management
- Bureau of Indian Affairs
- Other Federal Lands

Direct Fire Protection Provider

- FEDERAL
- STATE
- LOCAL



SHASTA COUNTY

Data Sources:
 Direct Protection Areas (DirectProtectionAreas16_3)
 Land Ownership (Ownership15_1)
 Incorporated Cities (Incorp14_2)
 DPA2016_CountyMaps_ArchD_land_20160511_5/11/2016
 NAD 1983 California Teale Albers

DIRECT PROTECTION AREA
 That area which, by law or pursuant to the terms of a cooperative agreement, is provided wildland fire protection by the State, Local or Federal Agencies. Direct protection areas may include a mixture of State, Federal, and Local responsibility areas.

This map was produced by the USFS Region 5 Fire and Aviation GIS Lab. GIS data and product accuracy may vary. The Forest Service reserves the right to update, modify, or replace any or all of this data without notifying the users. USFS Region 5 Geospatial Data can be found at <http://www.fs.usda.gov/main/r5/landmanagement/gis>