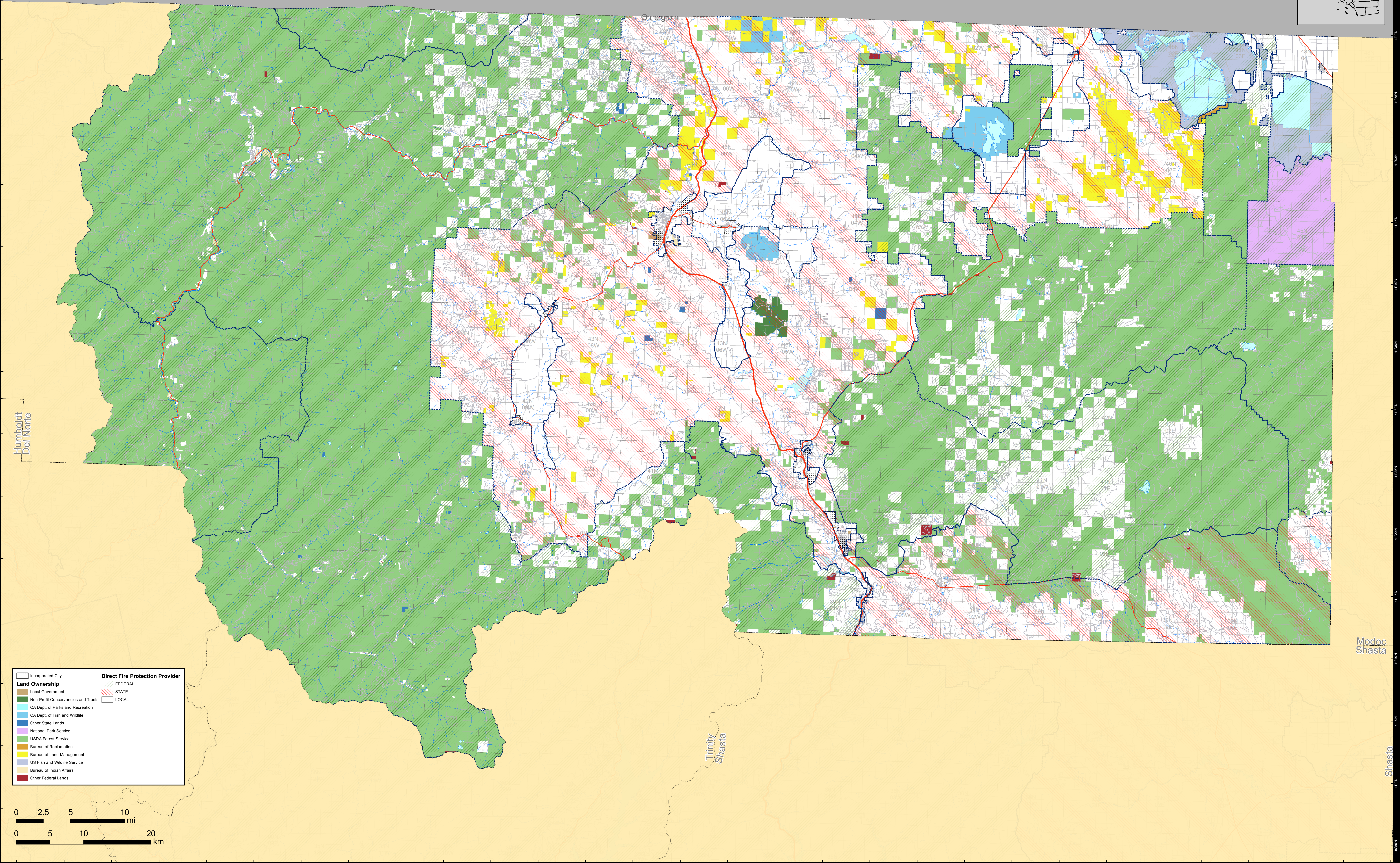
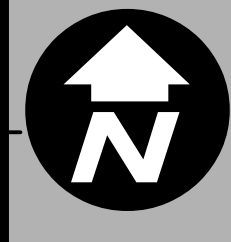
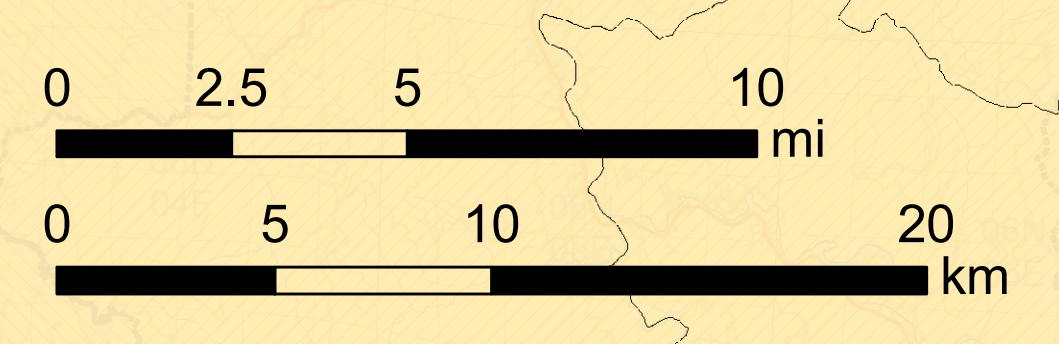


# DIRECT PROTECTION AREAS for WILDLAND FIRE PROTECTION

Produced for the California Wildfire Coordinating Group



Direct Fire Protection Provider	
Incorporated City	FEDERAL
Local Government	STATE
Non-Profit Concessions and Trusts	LOCAL
CA Dept. of Parks and Recreation	
CA Dept. of Fish and Wildlife	
Other State Lands	
National Park Service	
USDA Forest Service	
Bureau of Reclamation	
Bureau of Land Management	
US Fish and Wildlife Service	
Bureau of Indian Affairs	
Other Federal Lands	



# SISKIYOU COUNTY

Data Sources:  
Direct Protection Areas (DirectProtectionAreas16\_3)  
Land Ownership (Ownership15\_1)  
Incorporated Cities (Incorp14\_2)

DPA2016\_CountyMaps\_ArchE\_land\_20160518\_5/18/2016  
NAD 1983 California Teale Albers

**DIRECT PROTECTION AREA**  
That area which, by law or pursuant to the terms of a cooperative agreement, is provided wildland fire protection by the State, Local or Federal Agencies. Direct protection areas may include a mixture of State, Federal, and Local responsibility areas.

This map was produced by the USFS Region 5 Fire and Aviation GIS Lab. GIS data and product accuracy may vary. The Forest Service reserves the right to update, modify, or replace any or all of this data without notifying the users. USFS Region 5 Geospatial Data can be found at <http://www.fs.usda.gov/main/r5/landmanagement/gis>