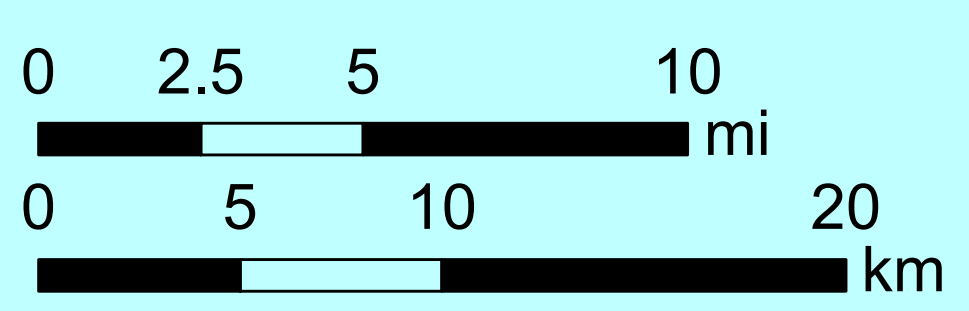
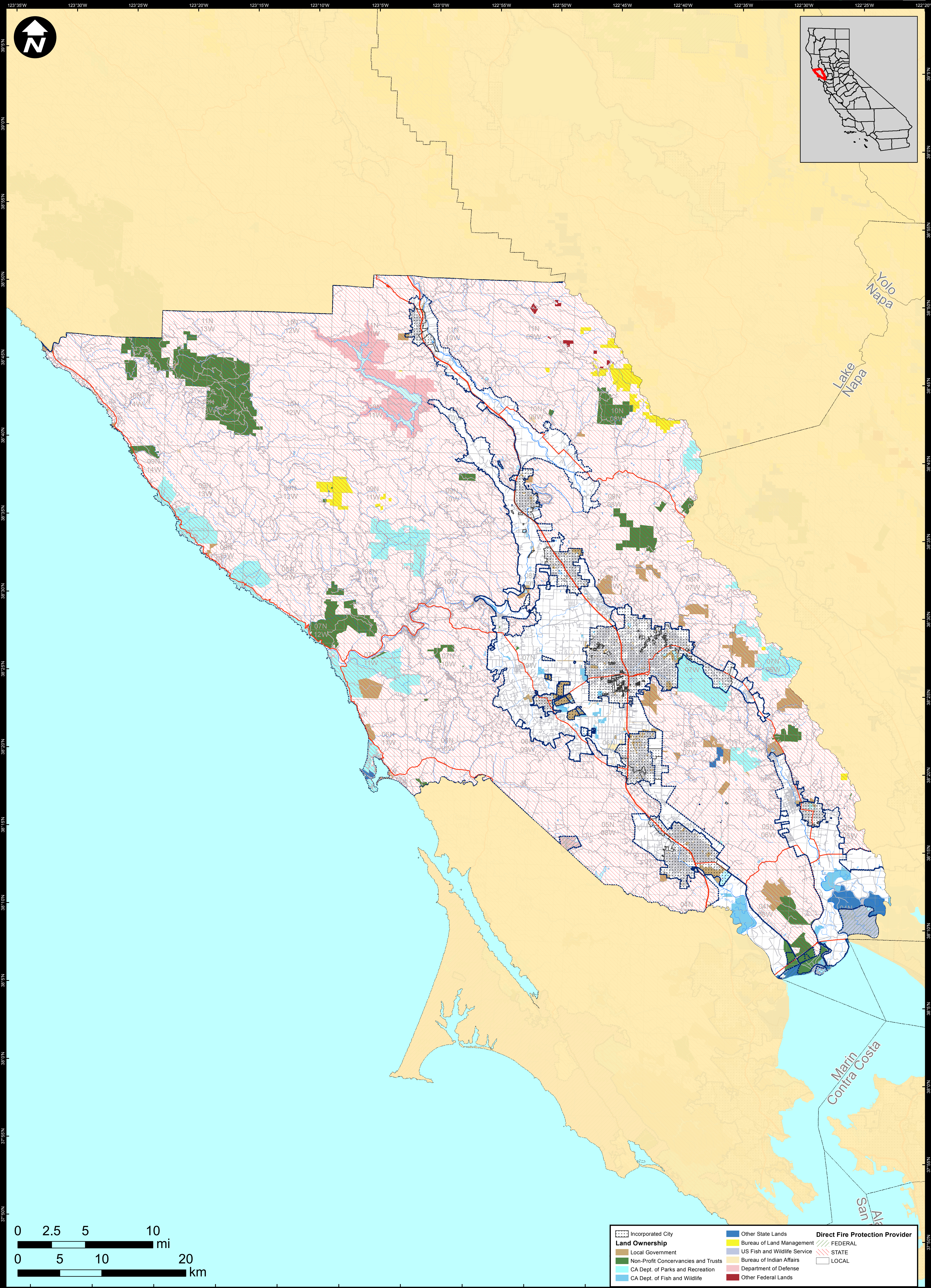


DIRECT PROTECTION AREAS for WILDLAND FIRE PROTECTION

Produced for the California Wildfire Coordinating Group



Land Ownership		Direct Fire Protection Provider	
	Incorporated City		Other State Lands
	Local Government		Bureau of Land Management
	Non-Profit Conservancies and Trusts		US Fish and Wildlife Service
	CA Dept. of Parks and Recreation		Bureau of Indian Affairs
	CA Dept. of Fish and Wildlife		Department of Defense
			Other Federal Lands
			FEDERAL
			STATE
			LOCAL

SONOMA COUNTY

Data Sources:
 Direct Protection Areas (DirectProtectionAreas16_3)
 Land Ownership (Ownership15_1)
 Incorporated Cities (Incorp14_2)
 DPA2016_CountyMaps_ArchD_port_20160511, 5/11/2016
 NAD 1983 California Teale Albers

DIRECT PROTECTION AREA
 That area which, by law or pursuant to the terms of a cooperative agreement, is provided wildland fire protection by the State, Local or Federal Agencies. Direct protection areas may include a mixture of State, Federal, and Local responsibility

This map was produced by the USFS Region 5 Fire and Aviation GIS Lab. GIS data and product accuracy may vary. The Forest Service reserves the right to update, modify, or replace any or all of this data without notifying the users. USFS Region 5 Geospatial Data can be found at <http://www.fs.usda.gov/main/r5/landmanagement/gis>