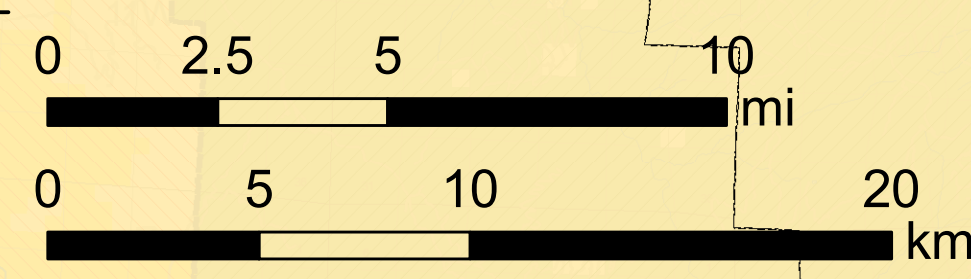
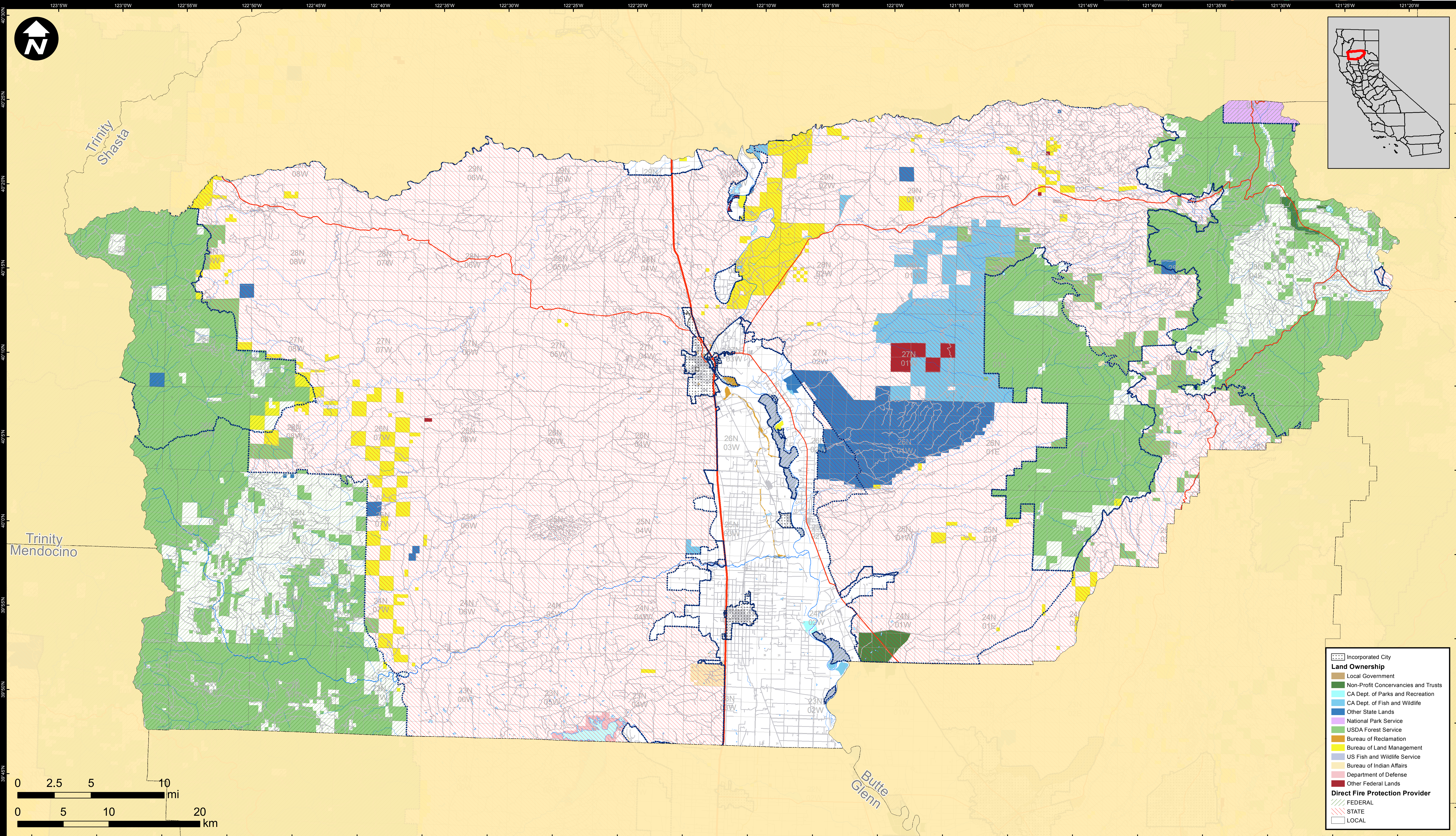


DIRECT PROTECTION AREAS for WILDLAND FIRE PROTECTION

Produced for the California Wildfire Coordinating Group



Land Ownership	
[Dashed Outline]	Incorporated City
[Green]	Local Government
[Dark Green]	Non-Profit Conservancies and Trusts
[Light Green]	CA Dept. of Parks and Recreation
[Blue]	CA Dept. of Fish and Wildlife
[Purple]	Other State Lands
[Light Purple]	National Park Service
[Yellow]	USDA Forest Service
[Orange]	Bureau of Reclamation
[Light Blue]	Bureau of Land Management
[Dark Blue]	US Fish and Wildlife Service
[Brown]	Bureau of Indian Affairs
[Light Brown]	Department of Defense
[Red]	Other Federal Lands
Direct Fire Protection Provider	
[Green]	FEDERAL
[Blue]	STATE
[White]	LOCAL

TEHAMA COUNTY

Data Sources:
 Direct Protection Areas (DirectProtectionAreas16_3)
 Land Ownership (Ownership15_1)
 Incorporated Cities (Incorp14_2)
 DPA2016_CountyMaps_ArchD_Land_20160511_5/11/2016
 NAD 1983 California Teale Albers

DIRECT PROTECTION AREA
 That area which, by law or pursuant to the terms of a cooperative agreement, is provided wildland fire protection by the State, Local or Federal Agencies. Direct protection areas may include a mixture of State, Federal, and Local responsibility areas.

This map was produced by the USFS Region 5 Fire and Aviation GIS Lab. GIS data and product accuracy may vary. The Forest Service reserves the right to update, modify, or replace any or all of this data without notifying the users. USFS Region 5 Geospatial Data can be found at <http://www.fs.usda.gov/main/r5/landmanagement/gis>