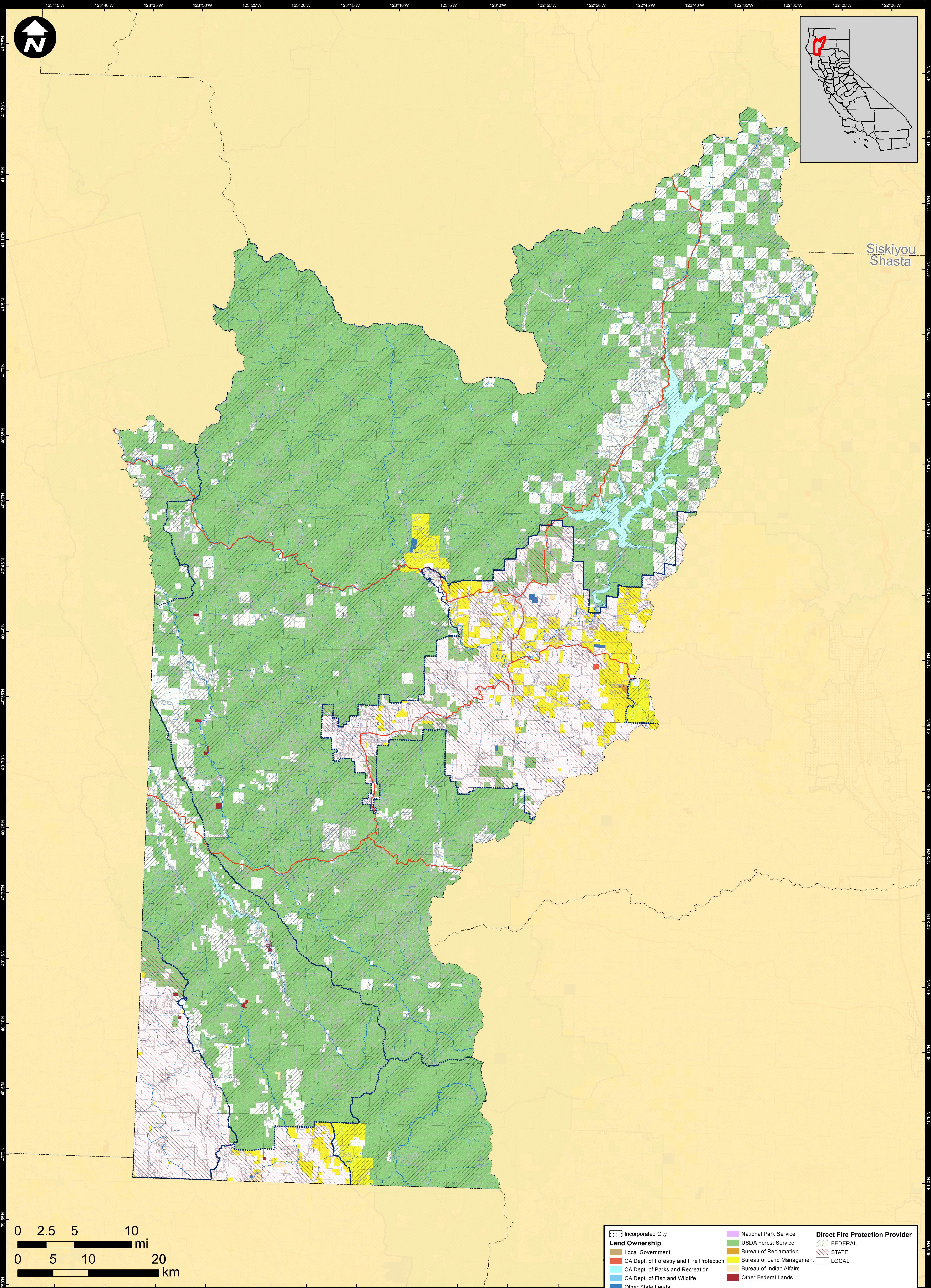
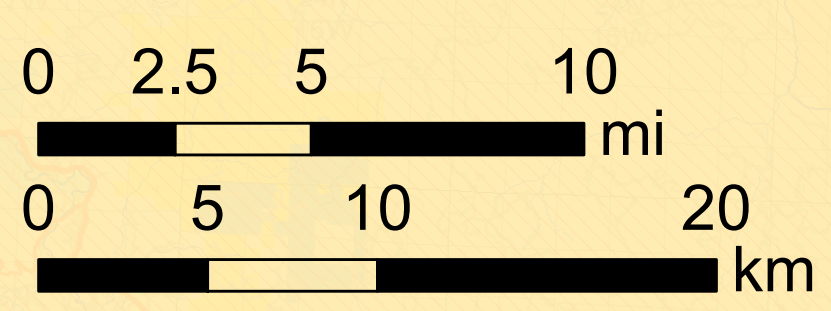


DIRECT PROTECTION AREAS for WILDLAND FIRE PROTECTION

Produced for the California Wildfire Coordinating Group



Siskiyou
Shasta



Land Ownership		Direct Fire Protection Provider	
[Dotted Pattern]	Incorporated City	[Green]	USDA Forest Service
[Brown]	Local Government	[Yellow]	Bureau of Reclamation
[Red]	CA Dept. of Forestry and Fire Protection	[Light Blue]	Bureau of Land Management
[Light Blue]	CA Dept. of Parks and Recreation	[Dark Blue]	Bureau of Indian Affairs
[Blue]	CA Dept. of Fish and Wildlife	[Red]	Other Federal Lands
[Blue]	Other State Lands	[Green with Diagonal Lines]	FEDERAL
		[Red with Diagonal Lines]	STATE
		[White with Diagonal Lines]	LOCAL
		[Purple]	National Park Service

**TRINITY
COUNTY**

Data Sources:
 Direct Protection Areas (DirectProtectionAreas16_3)
 Land Ownership (Ownership15_1)
 Incorporated Cities (Incorp14_2)
 DPA2016_CountyMaps_ArchD_port_20160511, 5/18/2016
 NAD 1983 California Teale Albers

DIRECT PROTECTION AREA
 That area which, by law or pursuant to the terms of a cooperative agreement, is provided wildland fire protection by the State, Local or Federal Agencies. Direct protection areas may include a mixture of State, Federal, and Local responsibility

This map was produced by the USFS Region 5 Fire and Aviation GIS Lab. GIS data and product accuracy may vary. The Forest Service reserves the right to update, modify, or replace any or all of this data without notifying the users. USFS Region 5 Geospatial Data can be found at <http://www.fs.usda.gov/main/r5/landmanagement/gis>