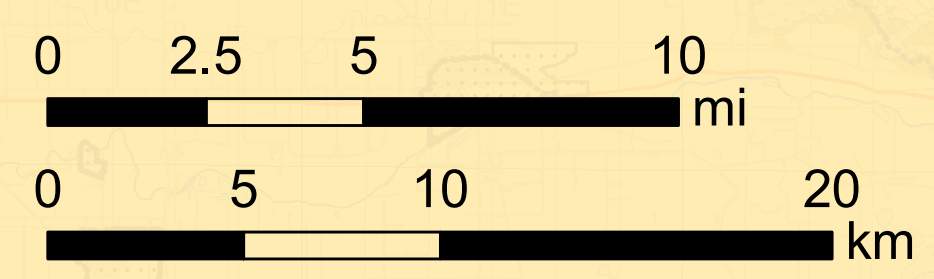
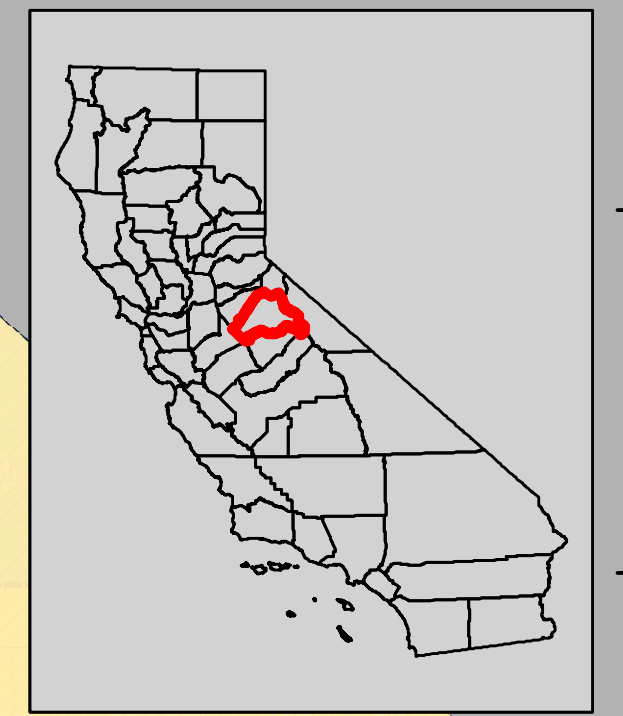
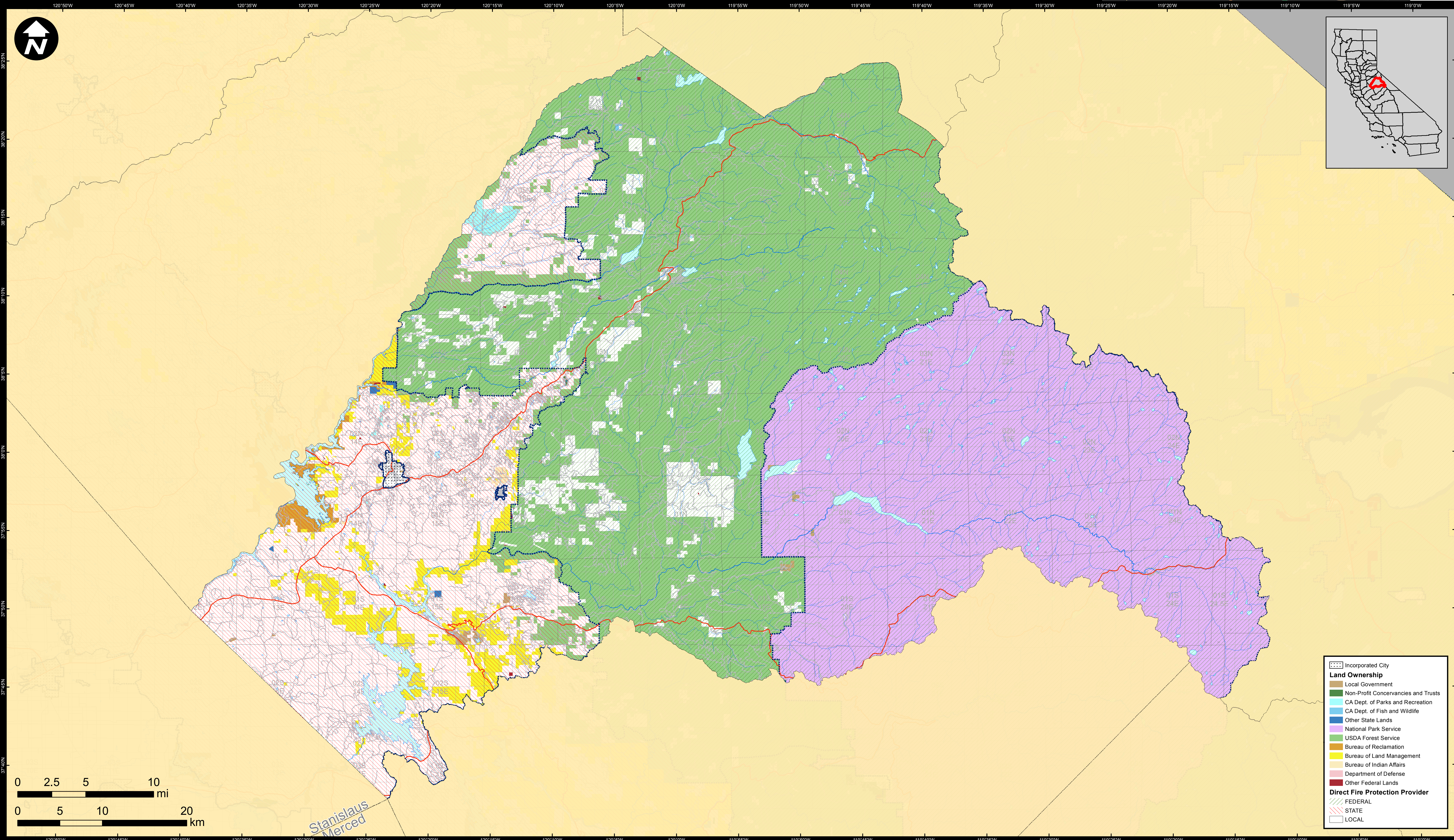


# DIRECT PROTECTION AREAS for WILDLAND FIRE PROTECTION

Produced for the California Wildfire Coordinating Group



Incorporated City	
[Dotted pattern]	Incorporated City
Land Ownership	
[Brown]	Local Government
[Green]	Non-Profit Conservancies and Trusts
[Light Green]	CA Dept. of Parks and Recreation
[Light Blue]	CA Dept. of Fish and Wildlife
[Dark Blue]	Other State Lands
[Purple]	National Park Service
[Light Green]	USDA Forest Service
[Yellow]	Bureau of Reclamation
[Orange]	Bureau of Land Management
[Light Purple]	Bureau of Indian Affairs
[Pink]	Department of Defense
[Red]	Other Federal Lands
Direct Fire Protection Provider	
[Green with diagonal lines]	FEDERAL
[Purple with diagonal lines]	STATE
[White with diagonal lines]	LOCAL

# TUOLUMNE COUNTY

Data Sources:  
 Direct Protection Areas (DirectProtectionAreas16\_3)  
 Land Ownership (Ownership15\_1)  
 Incorporated Cities (Incorp14\_2)

DPA2016\_CountyMaps\_ArchD\_land\_20160511, 5/11/2016  
 NAD 1983 California Teale Albers

**DIRECT PROTECTION AREA**  
 That area which, by law or pursuant to the terms of a cooperative agreement, is provided wildland fire protection by the State, Local or Federal Agencies. Direct protection areas may include a mixture of State, Federal, and Local responsibility areas.

This map was produced by the USFS Region 5 Fire and Aviation GIS Lab. GIS data and product accuracy may vary. The Forest Service reserves the right to update, modify, or replace any or all of this data without notifying the users. USFS Region 5 Geospatial Data can be found at <http://www.fs.usda.gov/main/r5/landmanagement/gis>