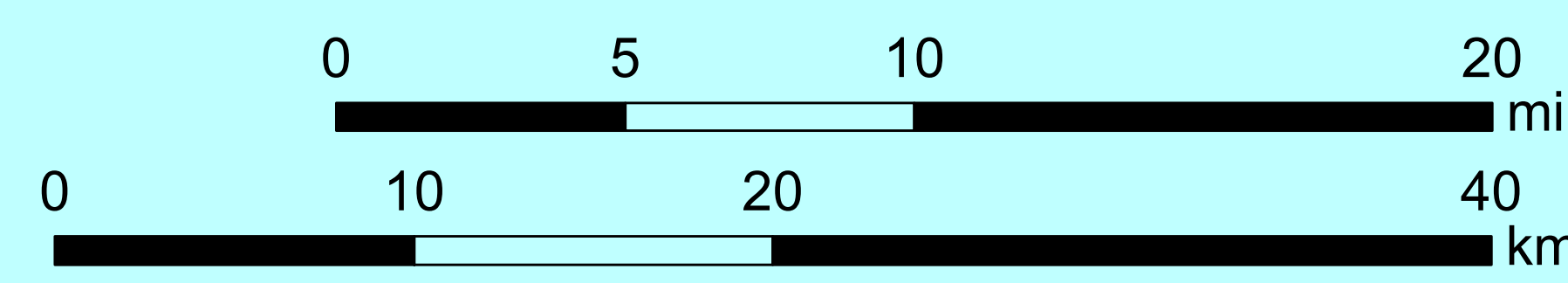
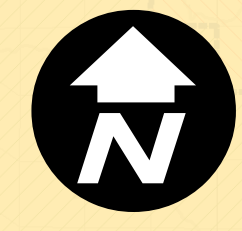
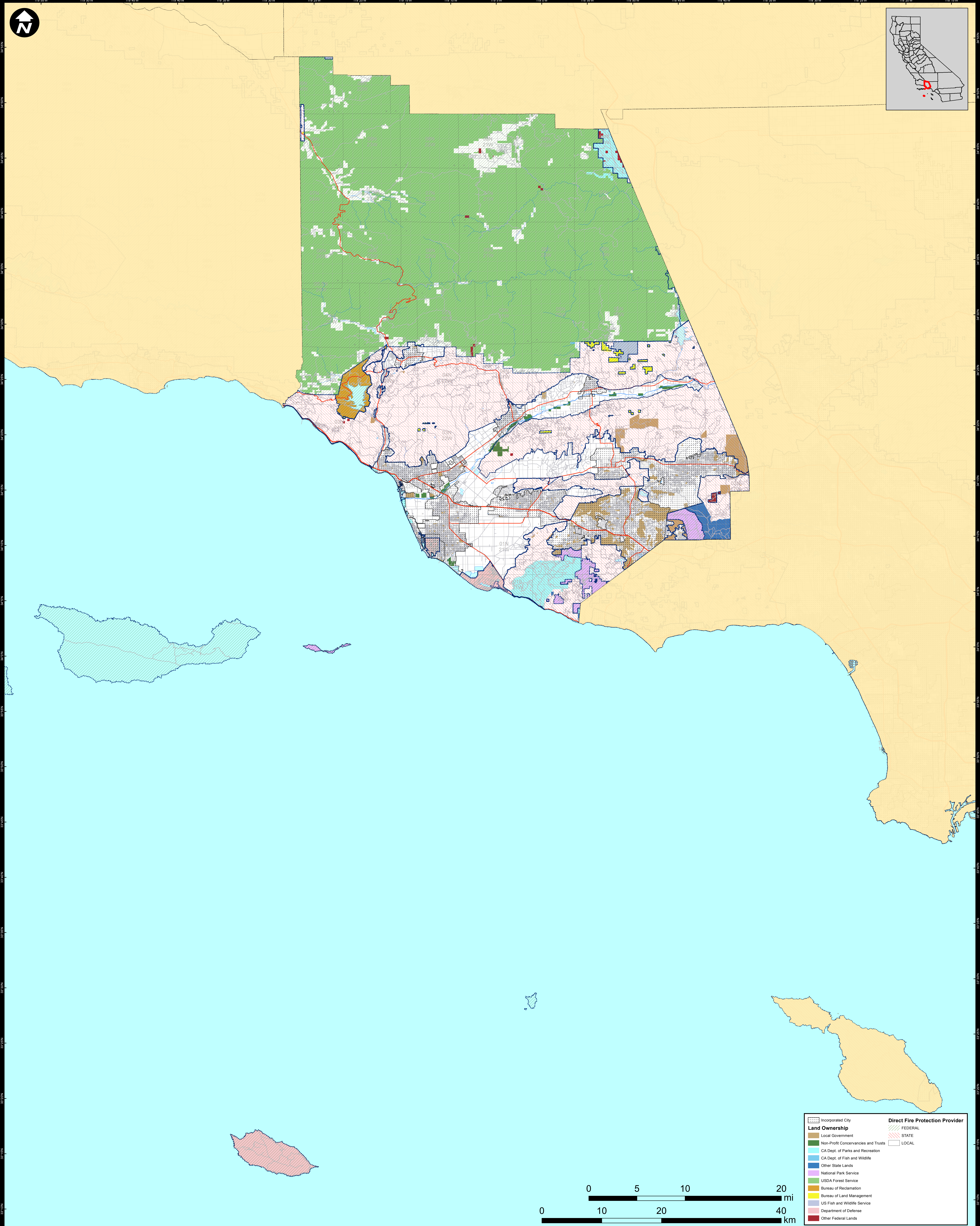


DIRECT PROTECTION AREAS for WILDLAND FIRE PROTECTION

Produced for the California Wildfire Coordinating Group



Land Ownership		Direct Fire Protection Provider	
	Incorporated City		FEDERAL
	Local Government		STATE
	Non-Profit Conservancies and Trusts		LOCAL
	USDA Forest Service		
	CA Dept. of Parks and Recreation		
	Other State Lands		
	National Park Service		
	Bureau of Reclamation		
	Bureau of Land Management		
	US Fish and Wildlife Service		
	Department of Defense		
	Other Federal Lands		

VENTURA COUNTY

Data Sources:
 Direct Protection Areas (DirectProtectionAreas16_3)
 Land Ownership (Ownership16_1)
 Incorporated Cities (Incorp14_2)

DIRECT PROTECTION AREA
 That area which, by law or pursuant to the terms of a cooperative agreement, is provided wildland fire protection by the State, Local or Federal Agencies. Direct protection areas may include a mixture of State, Federal, and Local responsibility areas.

This map was produced by the USFS Region 5 Fire and Aviation GIS Lab. GIS data and product accuracy may vary. The Forest Service reserves the right to update, modify, or replace any or all of this data without notifying the users. USFS Region 5 Geospatial Data can be found at

DPA2016_CountyMaps_ArchE_port_20160518_5/18/2016
 NAD 1983 California Teale Albers