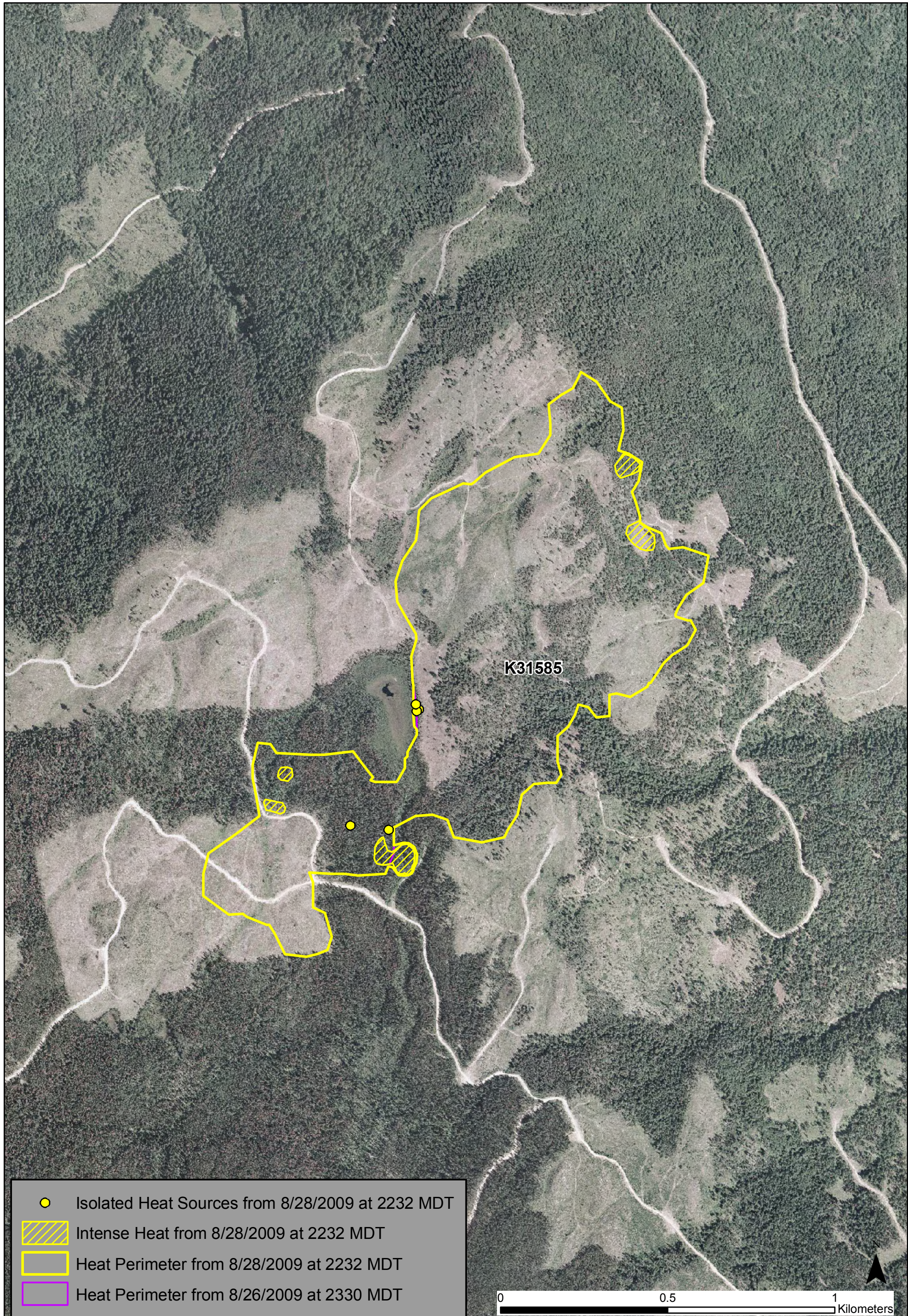


Infrared Map for K31585, Chase Creek
Flown at 2232 Hours MDT, August 28, 2009

IR Interpreter: Elise Bowne

97 Hectares from IR Heat Perimeter



- Isolated Heat Sources from 8/28/2009 at 2232 MDT
- ▨ Intense Heat from 8/28/2009 at 2232 MDT
- ▭ Heat Perimeter from 8/28/2009 at 2232 MDT
- ▭ Heat Perimeter from 8/26/2009 at 2330 MDT

