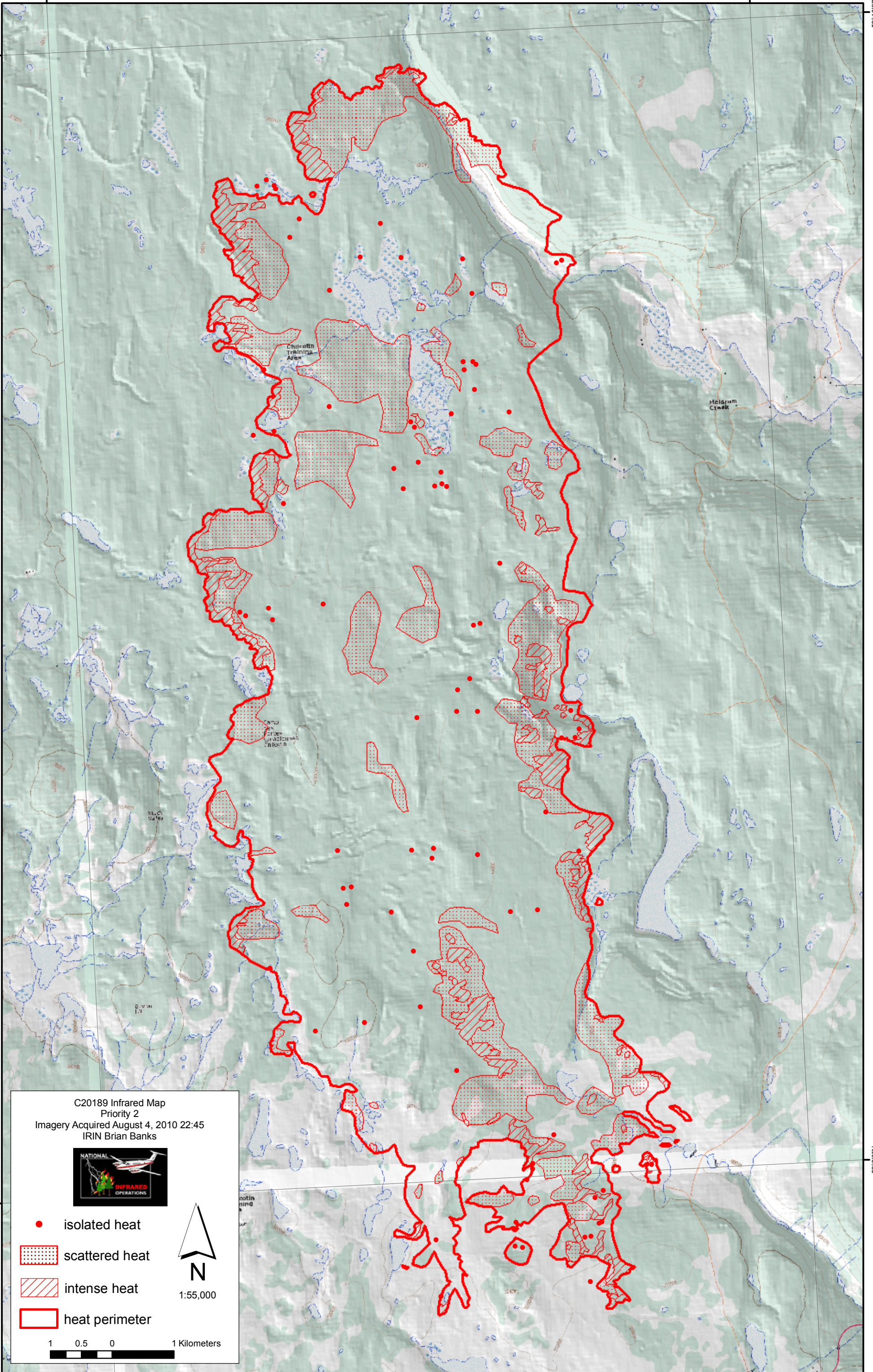


122°30'0"W

122°20'0"W

52°10'0"N

52°10'0"N



52°0'0"N

52°0'0"N

C20189 Infrared Map
 Priority 2
 Imagery Acquired August 4, 2010 22:45
 IRIN Brian Banks



- isolated heat
- scattered heat
- intense heat
- heat perimeter



1:55,000

1 0.5 0 1 Kilometers

122°30'0"W

122°20'0"W