

122°30'0"W 122°28'0"W 122°26'0"W 122°24'0"W 122°22'0"W 122°20'0"W 122°18'0"W

C20189 Fire Infrared Map  
Priority 4  
Imagery Acquired August 8, 2010 23:35  
IRIN M McGann



- isolated heat
- scattered heat
- intense heat
- heat perimeter
- previous perimeter

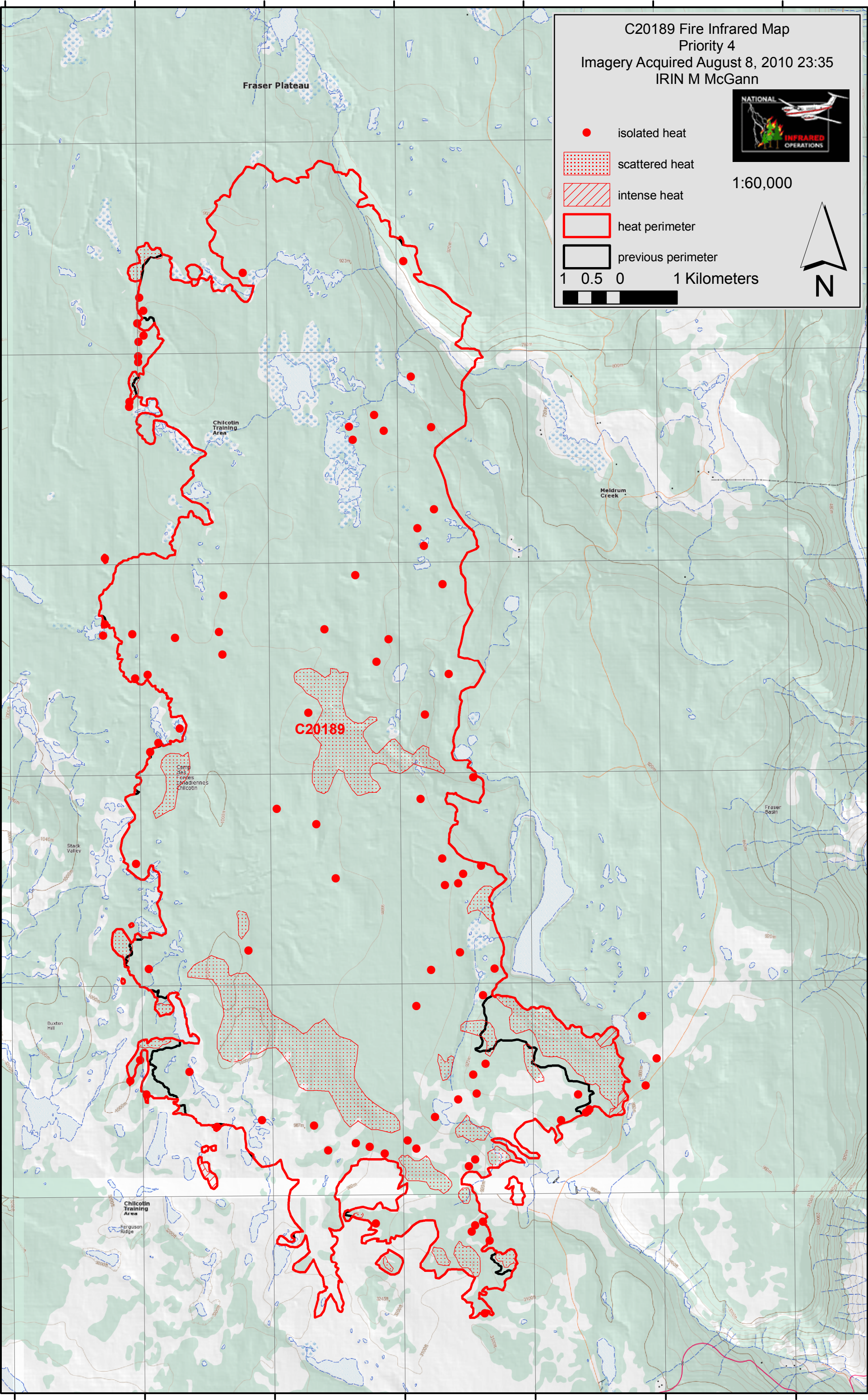
1:60,000

1 0.5 0 1 Kilometers



52°10'0"N  
52°8'0"N  
52°6'0"N  
52°4'0"N  
52°2'0"N  
52°0'0"N

52°10'0"N  
52°8'0"N  
52°6'0"N  
52°4'0"N  
52°2'0"N  
52°0'0"N



122°30'0"W 122°28'0"W 122°26'0"W 122°24'0"W 122°22'0"W 122°20'0"W 122°18'0"W