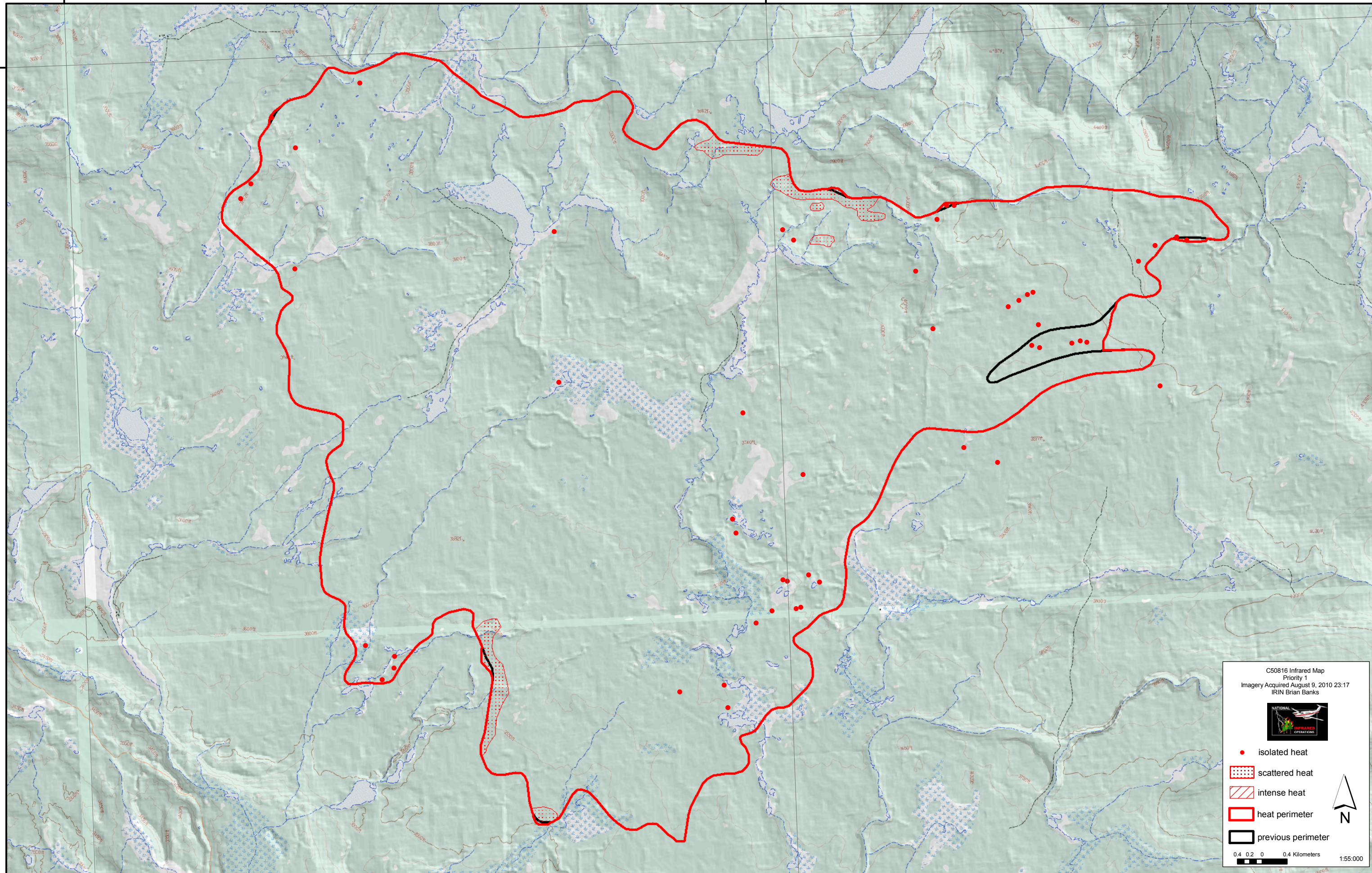


123°30'0"W

123°20'0"W

52°20'0"N


52°20'0"N



123°30'0"W

123°20'0"W

C50816 Infrared Map
 Priority 1
 Imagery Acquired August 9, 2010 23:17
 IRIN Brian Banks



- isolated heat
- scattered heat
- intense heat
- heat perimeter
- previous perimeter

0.4 0.2 0 0.4 Kilometers 1:55,000

