

123°40'0"W

123°30'0"W

53°20'0"N

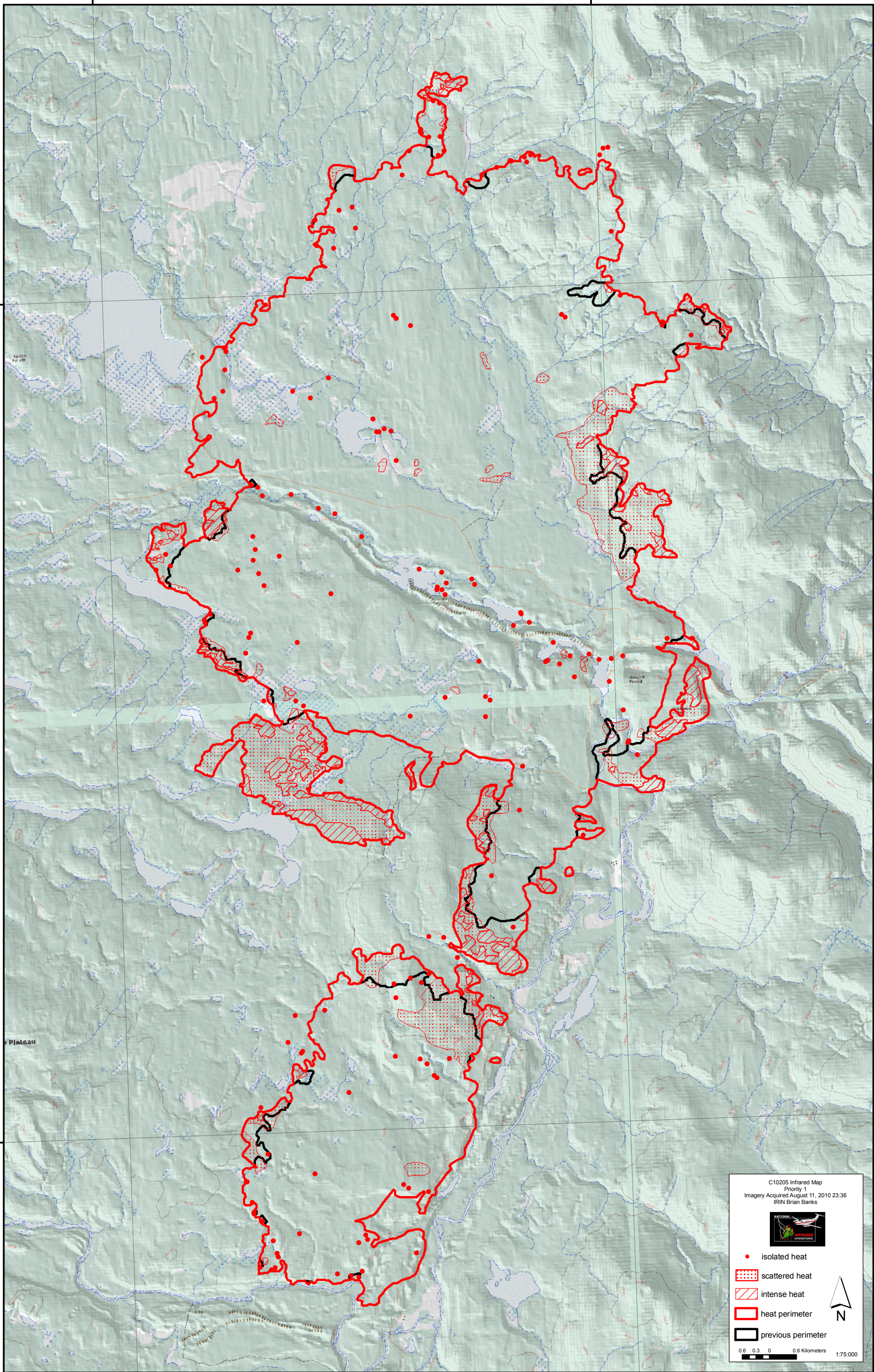
53°20'0"N

53°10'0"N


53°10'0"N

123°40'0"W

123°30'0"W



C10205 Infrared Map
Priority 1
Imagery Acquired August 11, 2010 23:36
IRIN Brian Banks



- isolated heat
- ▨ scattered heat
- ▧ intense heat
- ▭ heat perimeter
- ▭ previous perimeter

0.6 0.3 0 0.6 Kilometers 1:75,000