

123°30'0"W

123°20'0"W

52°20'0"N

52°20'0"N

52°10'0"N

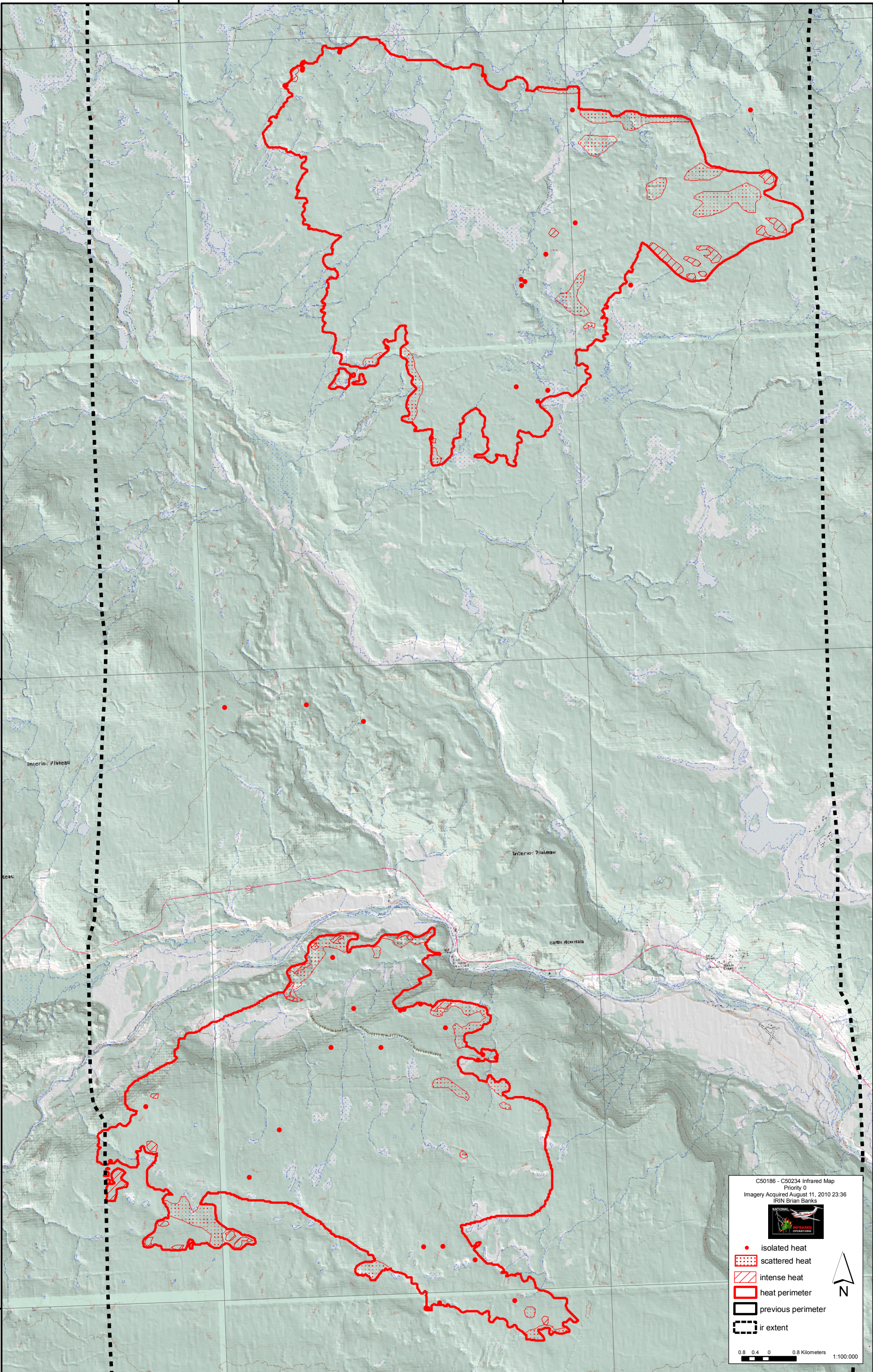
52°10'0"N

52°00'0"N


52°00'0"N

123°30'0"W

123°20'0"W



C50186 - C50234 Infrared Map
 Priority 0
 Imagery Acquired August 11, 2010 23:36
 IRIN Brian Banks



- isolated heat
- scattered heat
- intense heat
- heat perimeter
- previous perimeter
- ir extent

0.8 0.4 0 0.8 Kilometers 1:100,000

