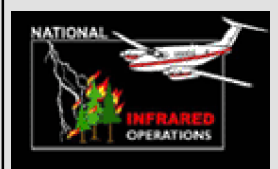


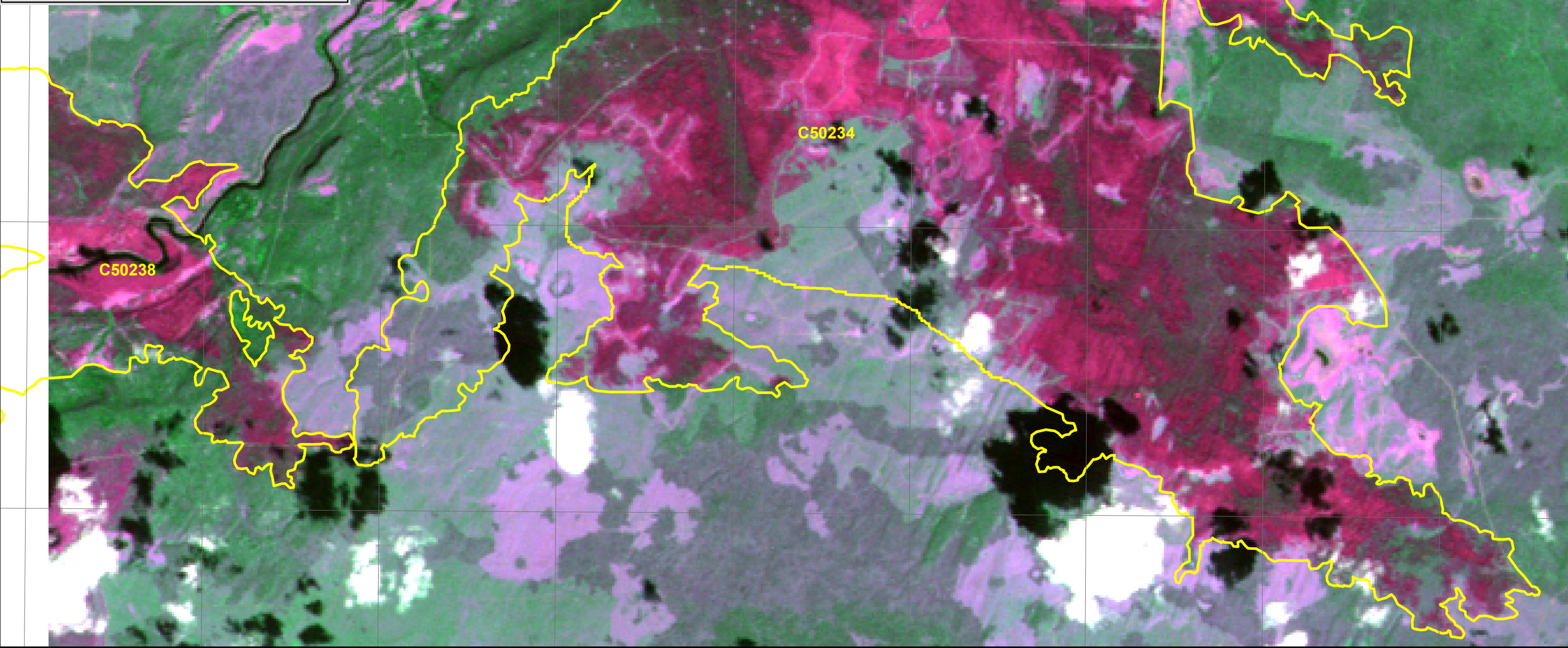
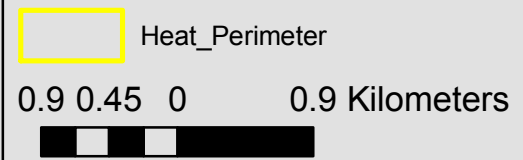
123°38'0"W 123°36'0"W 123°34'0"W 123°32'0"W 123°30'0"W 123°28'0"W 123°26'0"W 123°24'0"W 123°22'0"W

C50234 and C30238 Infrared Map
Imagery Acquired August 13, 2010 23:20
IRIN M McGann



Landsat 5 8/10/2010
Bands 7, 4, 5

1:50,000



123°38'0"W 123°36'0"W 123°34'0"W 123°32'0"W 123°30'0"W 123°28'0"W 123°26'0"W 123°24'0"W 123°22'0"W

52°4'0"N

52°2'0"N

52°0'0"N

52°4'0"N

52°2'0"N

52°0'0"N