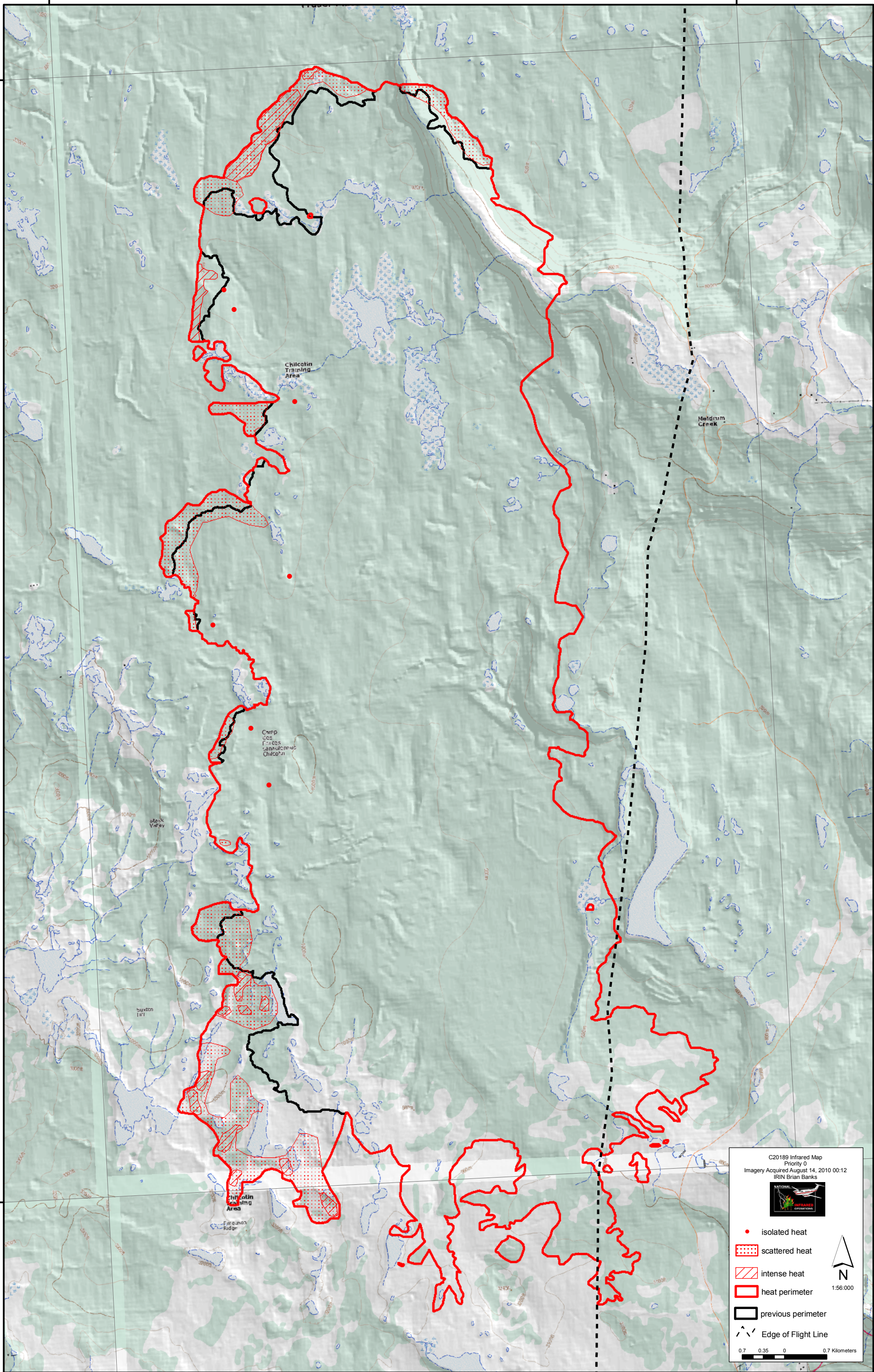


122°30'0"W

122°20'0"W

52°10'0"N

52°10'0"N




52°00'0"N

52°00'0"N

122°30'0"W

122°20'0"W

C20189 Infrared Map  
 Priority 0  
 Imagery Acquired August 14, 2010 00:12  
 IRIN Brian Banks



- isolated heat
- scattered heat
- intense heat
- heat perimeter
- previous perimeter
- Edge of Flight Line

N  
1:56,000

0 0.35 0.7 Kilometers