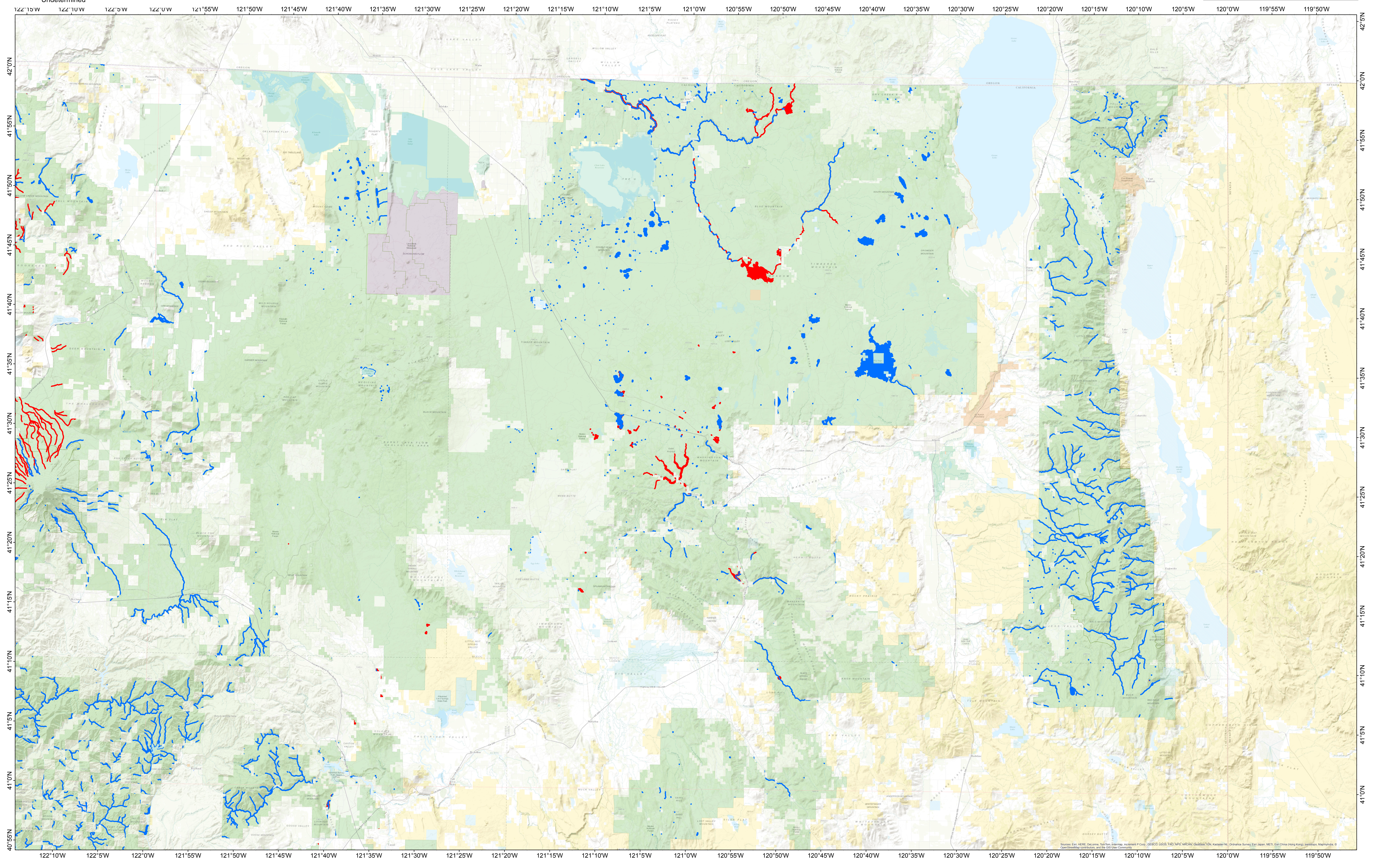
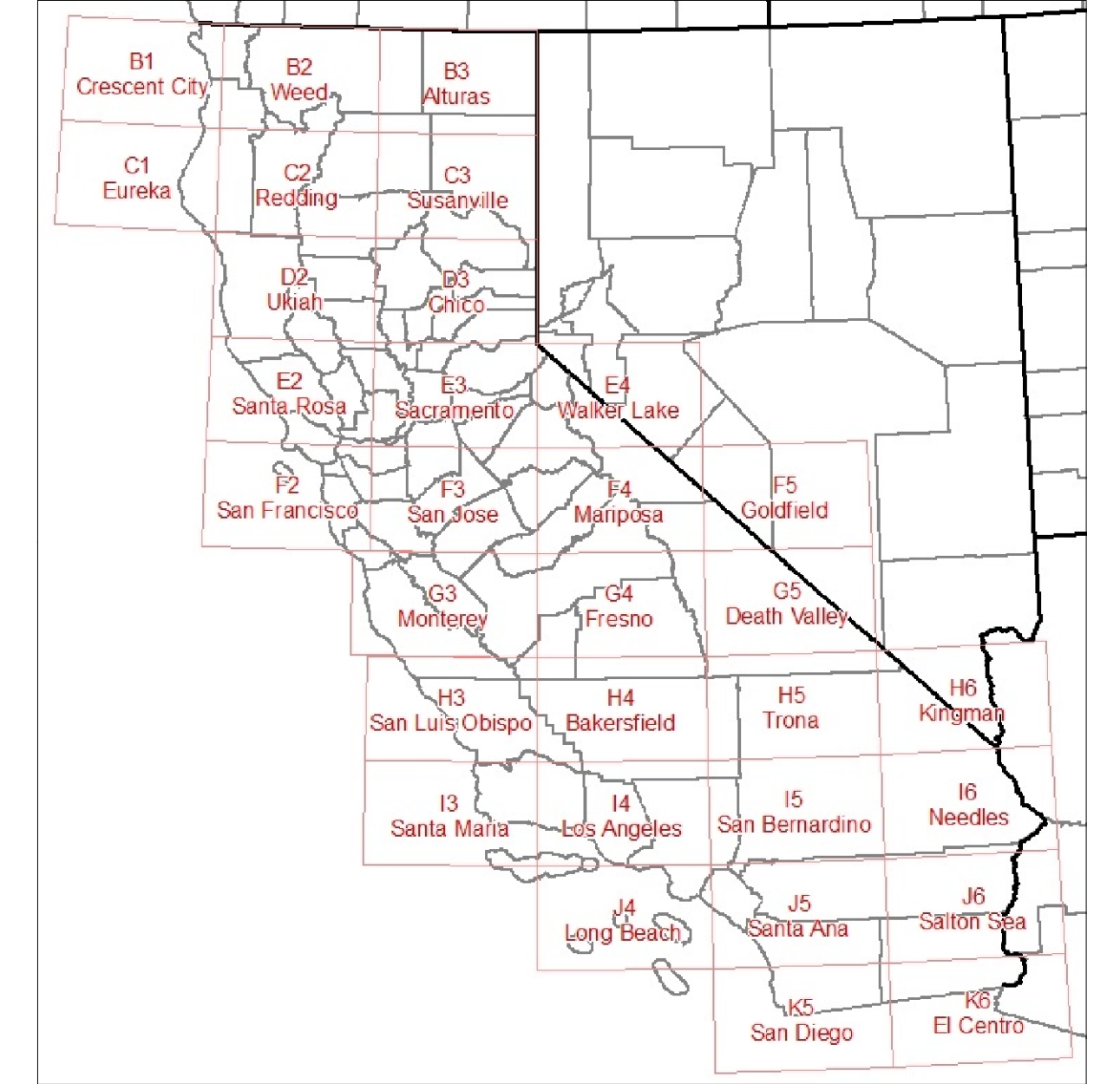
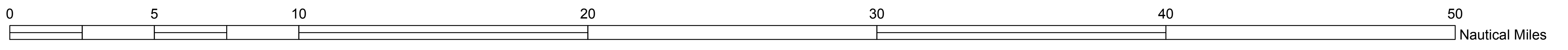
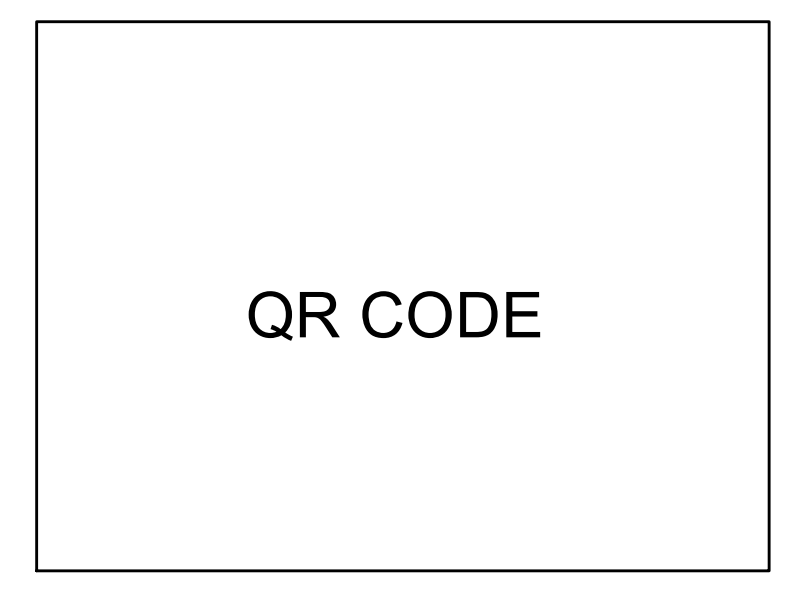


- Wilderness Areas
- CANV\_250K\_FullQuadsFRAR5only
- Military
- Bureau of Indian Affairs (BIA) Indian Reservations
- Bureau of Land Management (BLM)
- Bureau of Reclamation (BOR)
- US Forest Service (USFS)
- US Fish and Wildlife (FWS)
- US National Park Service (NPS)
- Other Federal Agencies
- State and Local
- Undetermined

Hydrographic Avoidance

TES Avoidance

USFS Region 5 Only  
 Fire Retardant Avoidance  
*B3 - Alturas*  
 May 30, 2015  
 Version 1  
 Geospatial PDFs available at:  
[http://ftp.nifc.gov/Incident\\_Specific\\_Data/CALIF\\_N/z\\_Aviation/RetAvoid/](http://ftp.nifc.gov/Incident_Specific_Data/CALIF_N/z_Aviation/RetAvoid/)



Sources: Esri, HERE, DeLorme, TomTom, Intermap, increment P Corp., GEBCO, IGN, NOAA, NGA, Swatch, USGS, AeroGRID, IGN, Esri, Japan, METI, Esri, China (Hong Kong), Swisstopo, Mapbox, © OpenStreetMap contributors, and the GIS User Community