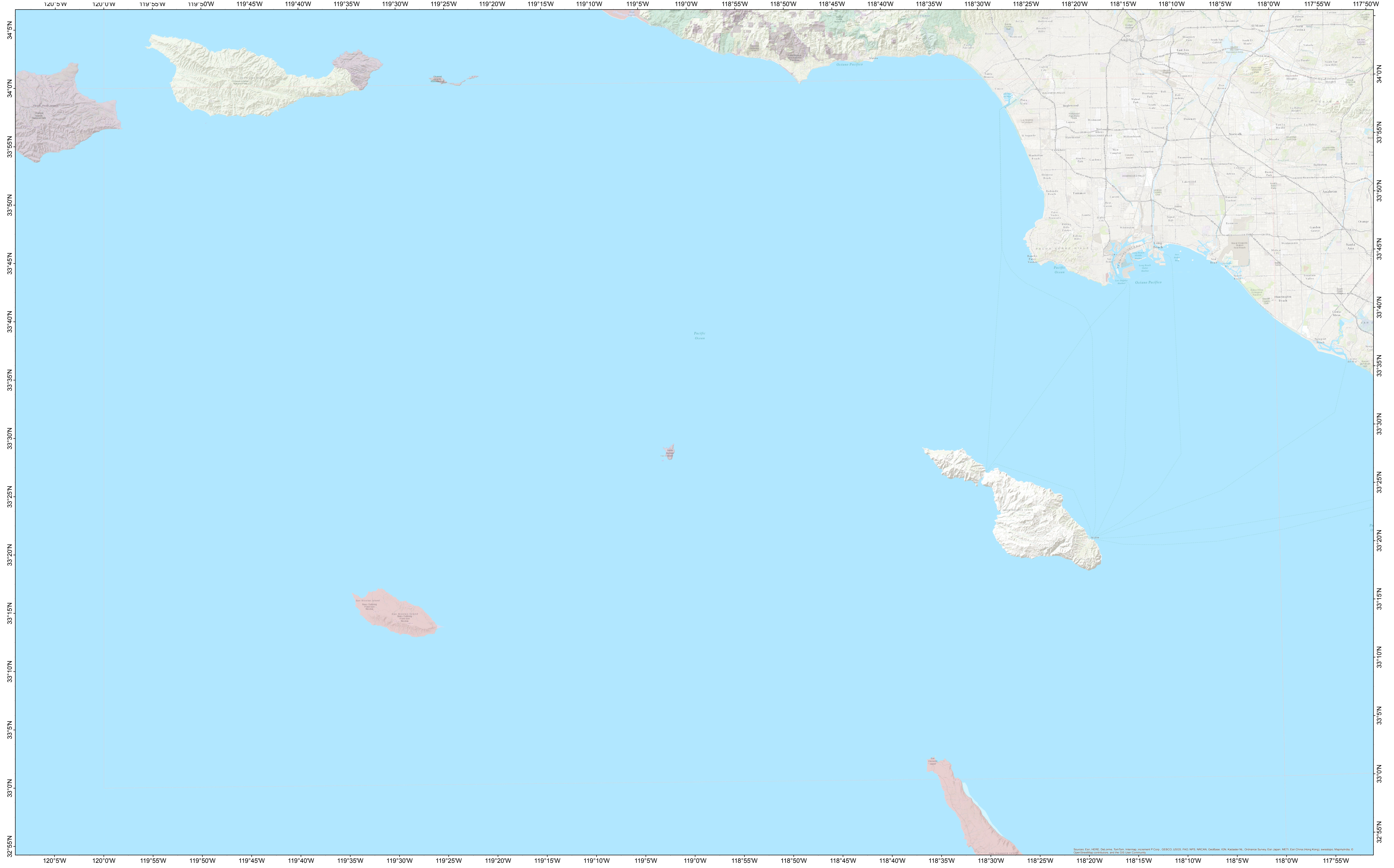
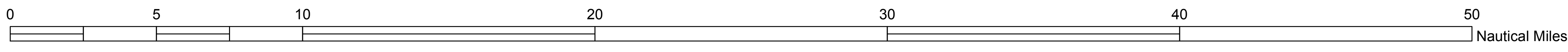
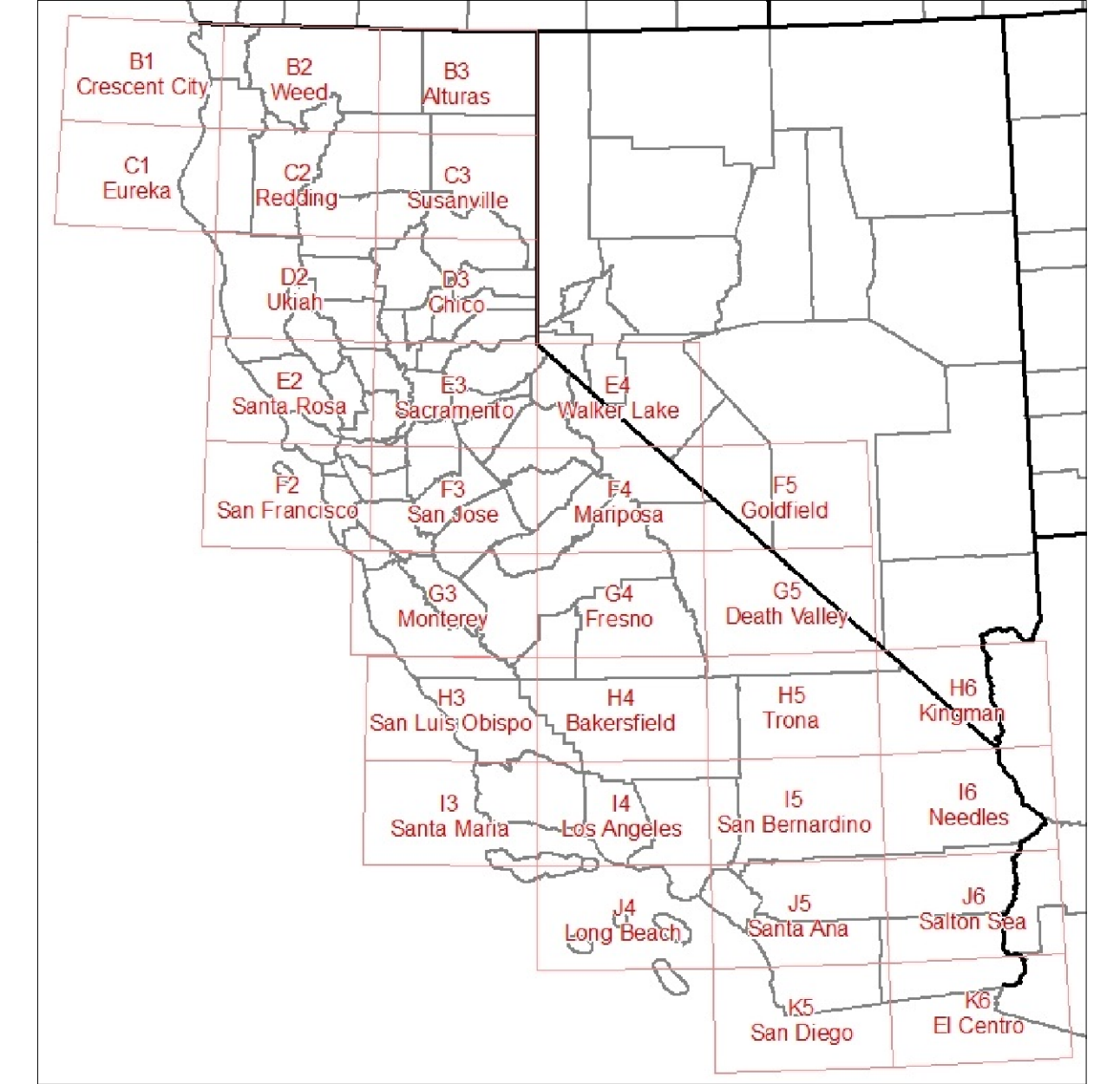
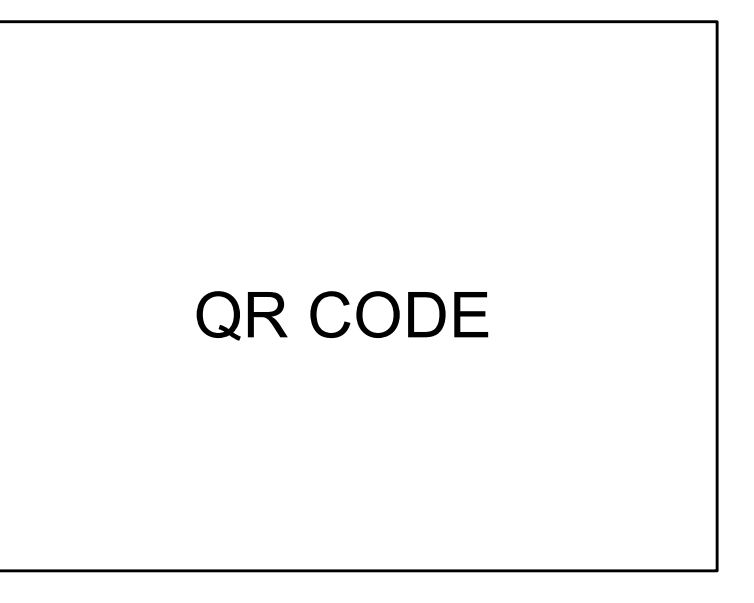


- Wilderness Areas
- CANV_250K_FullQuadsFRAR5only
- Military
- Bureau of Indian Affairs (BIA) Indian Reservations
- Bureau of Land Management (BLM)
- Bureau of Reclamation (BOR)
- US Forest Service (USFS)
- US Fish and Wildlife (FWS)
- US National Park Service (NPS)
- Other Federal Agencies
- State and Local
- Undetermined

Hydrographic Avoidance

TES Avoidance

USFS Region 5 Only
Fire Retardant Avoidance
J4 - Long Beach
 May 30, 2015
 Version 1
 Geospatial PDFs available at:
http://ftp.nifc.gov/Incident_Specific_Data/CALIF_Niz_Aviation/RetAvoid/



Sources: Esri, HERE, DeLorme, SwireTopo, Intermap, increment P Corp., GEBCO, USGS, FAO, NPS, NRCAN, GEBCO, IGN, KaiserMap, Ordnance Survey, Esri, Japan, METI, ERI, Swire, Hong Kong, Swiretopo, Mapbox, © OpenStreetMap contributors, and the GIS User Community