

**Route Map**  
**Beckworth Complex**  
 CA-PNF-1064  
 07/17/2021  
 Produced by Brandon C. Lewis  
 FireWatchCoburn@icg.com

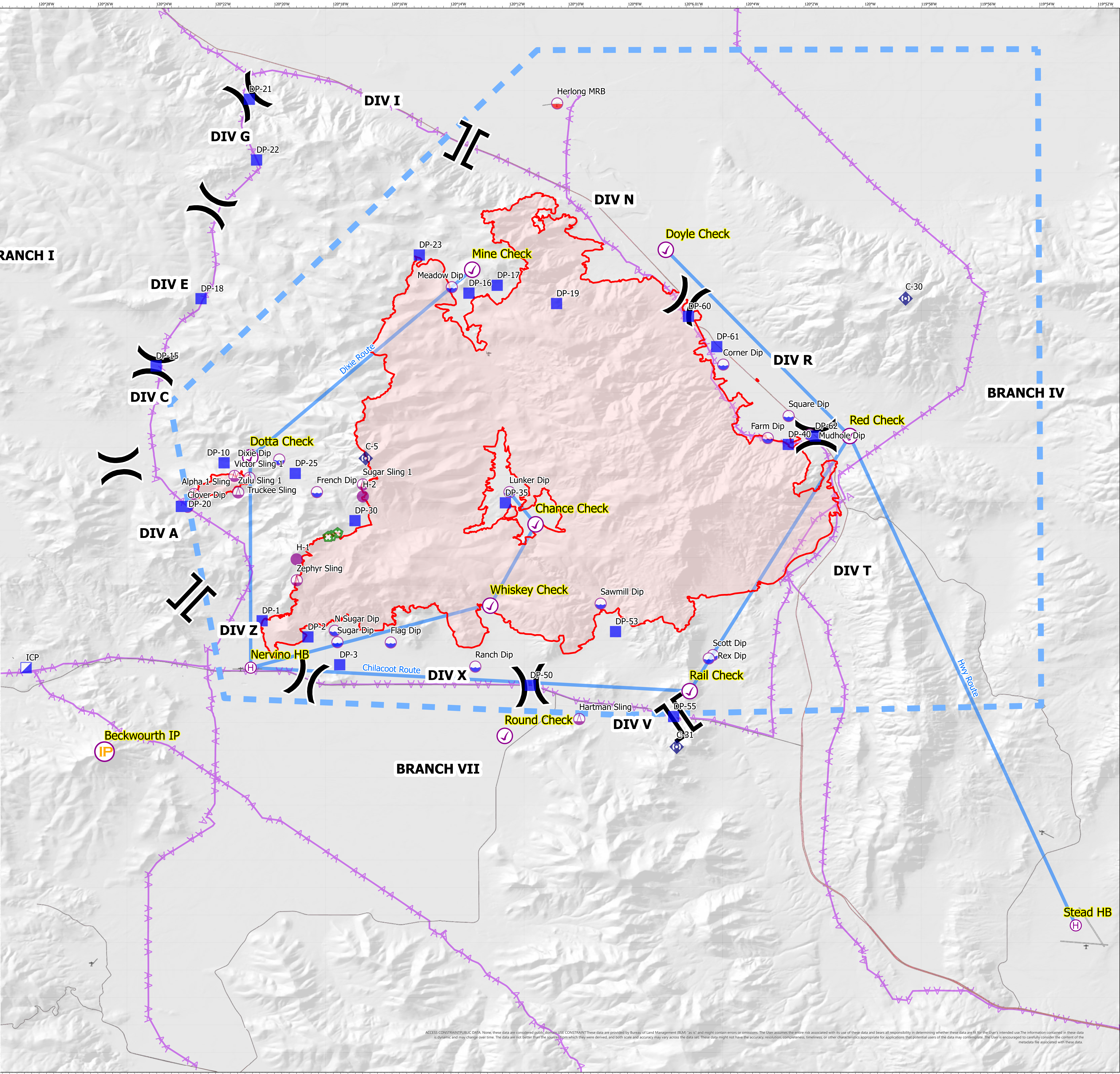
0 1 2 Miles

Legend:

- Helicopter Routes
- Mission Line
- Branch Break
- Division Break
- Dip Site
- Drop Point
- Helispot
- Helispot Command Post
- Repeater
- Retardant in Avoidance Area
- Sling Site
- Mobile Retardant Base
- Check Point
- Helibase
- Initial Point
- Fire
- Fire Perimeter
- Airport
- Helipoint
- Scopline Anchorage/Base
- Scopline Runways
- Controlled-access Highways
- Secondary Highways
- Local Connecting Roads

North Arrow

FeatureCat	Label	LatWGS84 D	LongWGS84
Check Point	Dotta Check	39° 56.307' N	120° 21.107' W
Check Point	Whiskey Check	39° 51.262' N	120° 12.912' W
Check Point	Chance Check	39° 54.028' N	120° 11.372' W
Check Point	Round Check	39° 46.835' N	120° 12.419' W
Check Point	Red Check	39° 57.028' N	120° 0.699' W
Check Point	Rail Check	39° 48.353' N	120° 06.134' W
Check Point	Mine Check	40° 02.688' N	120° 13.528' W
Check Point	Doyle Check	40° 03.360' N	120° 06.946' W
Dip Site	Sugar Dip	39° 50.020' N	120° 18.109' W
Dip Site	N Sugar Dip	39° 50.410' N	120° 18.198' W
Dip Site	French Dip	39° 55.123' N	120° 17.410' W
Dip Site	Lunker Dip	39° 55.123' N	120° 12.260' W
Dip Site	Dixie Dip	39° 56.232' N	120° 20.083' W
Dip Site	Ranch Dip	39° 49.190' N	120° 13.4207' W
Dip Site	Sawmill Dip	39° 51.330' N	120° 09.1607' W
Dip Site	Mudhole Dip	39° 57.080' N	120° 02.050' W
Dip Site	Square Dip	39° 57.710' N	120° 02.770' W
Dip Site	Flag Dip	39° 50.011' N	120° 16.295' W
Dip Site	Corner Dip	39° 59.458' N	120° 04.992' W
Dip Site	Farm Dip	39° 56.959' N	120° 03.479' W
Dip Site	Scott Dip	39° 49.582' N	120° 05.344' W
Dip Site	Rex Dip	39° 49.466' N	120° 05.485' W
Dip Site	Meadow Dip	40° 02.089' N	120° 14.219' W
Dip Site	Clover Dip	39° 54.622' N	120° 23.198' W
MRB	Herlong MRB	40° 08.337' N	120° 10.637' W
Drop Point	DP-1	39° 50.748' N	120° 20.668' W
Drop Point	DP-2	39° 50.200' N	120° 19.110' W
Drop Point	DP-3	39° 49.253' N	120° 18.030' W
Drop Point	DP-30	39° 54.153' N	120° 17.510' W
Drop Point	DP-35	39° 54.758' N	120° 12.399' W
Drop Point	DP-50	39° 48.554' N	120° 11.552' W
Drop Point	DP-53	39° 50.380' N	120° 08.654' W
Drop Point	DP-25	39° 55.758' N	120° 19.541' W
Drop Point	DP-15	39° 59.410' N	120° 24.272' W
Drop Point	DP-17	40° 02.154' N	120° 12.677' W
Drop Point	DP-16	40° 01.887' N	120° 13.638' W
Drop Point	DP-19	40° 01.533' N	120° 10.658' W
Drop Point	DP-40	39° 56.743' N	120° 02.781' W
Drop Point	DP-60	40° 01.098' N	120° 06.178' W
Drop Point	DP-61	40° 00.067' N	120° 05.214' W
Drop Point	DP-62	39° 57.026' N	120° 01.867' W
Drop Point	DP-55	39° 47.491' N	120° 06.678' W
Drop Point	DP-10	39° 56.118' N	120° 21.960' W
Drop Point	DP-20	39° 54.635' N	120° 23.4' W
Drop Point	DP-18	40° 01.707' N	120° 22.747' W
Drop Point	DP-22	40° 06.423' N	120° 20.861' W
Drop Point	DP-21	40° 08.478' N	120° 21.103' W
Drop Point	DP-23	40° 03.184' N	120° 15.325' W
Helibase	Stead HB	39° 40.391' N	119° 53.009' W
Helibase	Nervino HB	39° 49.160' N	120° 21.055' W
Helispot	H-1	39° 52.837' N	120° 19.497' W
Helispot	H-2	39° 54.928' N	120° 19.497' W
ICP	ICP	39° 49.151' N	120° 17.380' W
Repeater	C-5	39° 56.272' N	120° 17.146' W
Repeater	C-12	40° 01.704' N	119° 58.794' W
Repeater	C-31	39° 52.085' N	120° 31.897' W
Repeater	C-3	39° 46.443' N	120° 06.664' W
Sling Site	Zephyr Sling	39° 52.125' N	120° 19.490' W
Sling Site	Hartman Sling	39° 47.407' N	120° 09.888' W
Sling Site	Zulu Sling 1	39° 55.110' N	120° 21.480' W
Sling Site	Alpha 1 Sling	39° 55.059' N	120° 22.984' W



ACCESS CONSTRAINT/PUBLIC DATA: None, these data are considered public domain. USE CONSTRAINT: These data are provided by Bureau of Land Management (BLM) "as is" and might contain errors or omissions. The User assumes the entire risk associated with its use of these data and bears all responsibility in determining whether these data are fit for the User's intended use. The information contained in these data is dynamic and may change over time. The data are not better than the sources from which they were derived, and both scale and accuracy may vary across the data set. These data might not have the accuracy, resolution, completeness, timeliness, or other characteristics appropriate for applications that potential users of the data may contemplate. The User is encouraged to carefully consider the content of the metadata file associated with these data.