

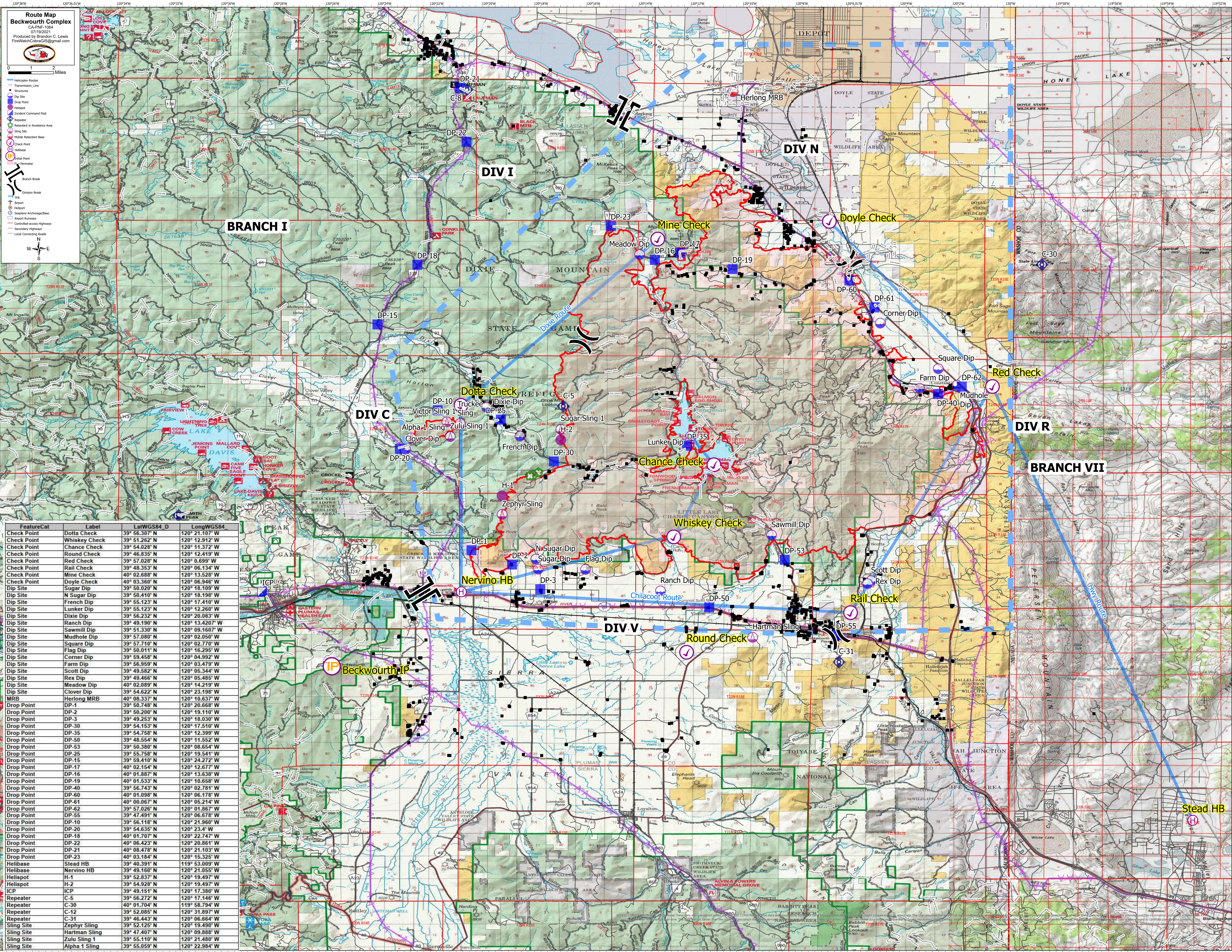
Route Map Beckwourth Complex

CA-FNF-1064
07/19/2024
Produced by Brandon C. Lewis
FireWatchCoburn@gmail.com

0 1 2 Miles

- Helicopter Routes
- Transmission Line
- Divisions
- Dip Site
- Drop Point
- Helispot
- Incident Command Post
- Relay/Retard in Avoidance Area
- Sling Site
- Public Retardant Base
- Check Point
- Helibase
- Final Point
- Primer
- Branch Break
- Division Break
- TR
- Airport
- Helipad
- Seaplane Anchorage/Base
- Survey Runways
- Controlled Access Highways
- Secondary Highways
- Local Connecting Roads

FeatureCat	Label	LatWGS84 D	LongWGS84
Check Point	Dotta Check	39° 56.307' N	120° 21.107' W
Check Point	Whiskey Check	39° 51.262' N	120° 12.912' W
Check Point	Chance Check	39° 54.028' N	120° 11.372' W
Check Point	Round Check	39° 46.835' N	120° 12.419' W
Check Point	Red Check	39° 57.028' N	120° 0.699' W
Check Point	Rail Check	39° 48.353' N	120° 06.134' W
Check Point	Mine Check	40° 02.688' N	120° 13.528' W
Check Point	Doyle Check	40° 03.360' N	120° 06.946' W
Dip Site	Sugar Dip	39° 50.020' N	120° 18.109' W
Dip Site	N Sugar Dip	39° 50.410' N	120° 18.198' W
Dip Site	Dixie Dip	39° 55.123' N	120° 17.410' W
Dip Site	Lunker Dip	39° 55.123' N	120° 12.260' W
Dip Site	Dixie Dip	39° 56.232' N	120° 20.083' W
Dip Site	Ranch Dip	39° 49.190' N	120° 13.4207' W
Dip Site	Sawmill Dip	39° 51.330' N	120° 09.1607' W
Dip Site	Mudhole Dip	39° 57.080' N	120° 02.050' W
Dip Site	Square Dip	39° 57.710' N	120° 02.770' W
Dip Site	Flag Dip	39° 50.011' N	120° 16.295' W
Dip Site	Corner Dip	39° 59.458' N	120° 04.992' W
Dip Site	Farm Dip	39° 56.959' N	120° 03.479' W
Dip Site	Scott Dip	39° 49.582' N	120° 05.344' W
Dip Site	Rex Dip	39° 49.466' N	120° 05.485' W
Dip Site	Meadow Dip	40° 02.089' N	120° 14.219' W
Dip Site	Clover Dip	39° 54.622' N	120° 23.198' W
MRB	Herlong MRB	40° 08.337' N	120° 10.637' W
Drop Point	DP-1	39° 50.748' N	120° 20.658' W
Drop Point	DP-2	39° 50.200' N	120° 19.110' W
Drop Point	DP-3	39° 49.253' N	120° 18.030' W
Drop Point	DP-30	39° 54.153' N	120° 17.510' W
Drop Point	DP-35	39° 54.758' N	120° 12.399' W
Drop Point	DP-50	39° 48.554' N	120° 11.552' W
Drop Point	DP-53	39° 50.380' N	120° 08.654' W
Drop Point	DP-25	39° 55.758' N	120° 19.541' W
Drop Point	DP-15	39° 59.410' N	120° 24.272' W
Drop Point	DP-17	40° 02.154' N	120° 12.677' W
Drop Point	DP-16	40° 01.887' N	120° 13.638' W
Drop Point	DP-19	40° 01.533' N	120° 10.658' W
Drop Point	DP-40	39° 56.743' N	120° 02.781' W
Drop Point	DP-60	40° 01.098' N	120° 06.178' W
Drop Point	DP-61	40° 00.067' N	120° 05.214' W
Drop Point	DP-62	39° 57.026' N	120° 01.867' W
Drop Point	DP-55	39° 47.491' N	120° 06.678' W
Drop Point	DP-10	39° 56.118' N	120° 21.960' W
Drop Point	DP-20	39° 54.635' N	120° 23.4' W
Drop Point	DP-18	40° 01.707' N	120° 22.747' W
Drop Point	DP-22	40° 06.423' N	120° 20.861' W
Drop Point	DP-21	40° 08.478' N	120° 21.103' W
Drop Point	DP-23	40° 03.184' N	120° 15.325' W
Helibase	Stead HB	39° 40.391' N	119° 53.009' W
Helibase	Nervino HB	39° 49.160' N	120° 21.055' W
Helispot	H-1	39° 52.837' N	120° 19.497' W
Helispot	H-2	39° 54.928' N	120° 19.497' W
ICP	ICP	39° 49.151' N	120° 17.380' W
Repeater	C-30	39° 56.272' N	120° 17.146' W
Repeater	C-31	39° 52.085' N	120° 31.897' W
Repeater	C-31	39° 46.443' N	120° 06.664' W
Sling Site	Zephyr Sling	39° 52.125' N	120° 19.490' W
Sling Site	Hartman Sling	39° 47.407' N	120° 09.888' W
Sling Site	Zulu Sling 1	39° 55.110' N	120° 21.480' W
Sling Site	Alpha 1 Sling	39° 55.059' N	120° 22.984' W



Stead HB