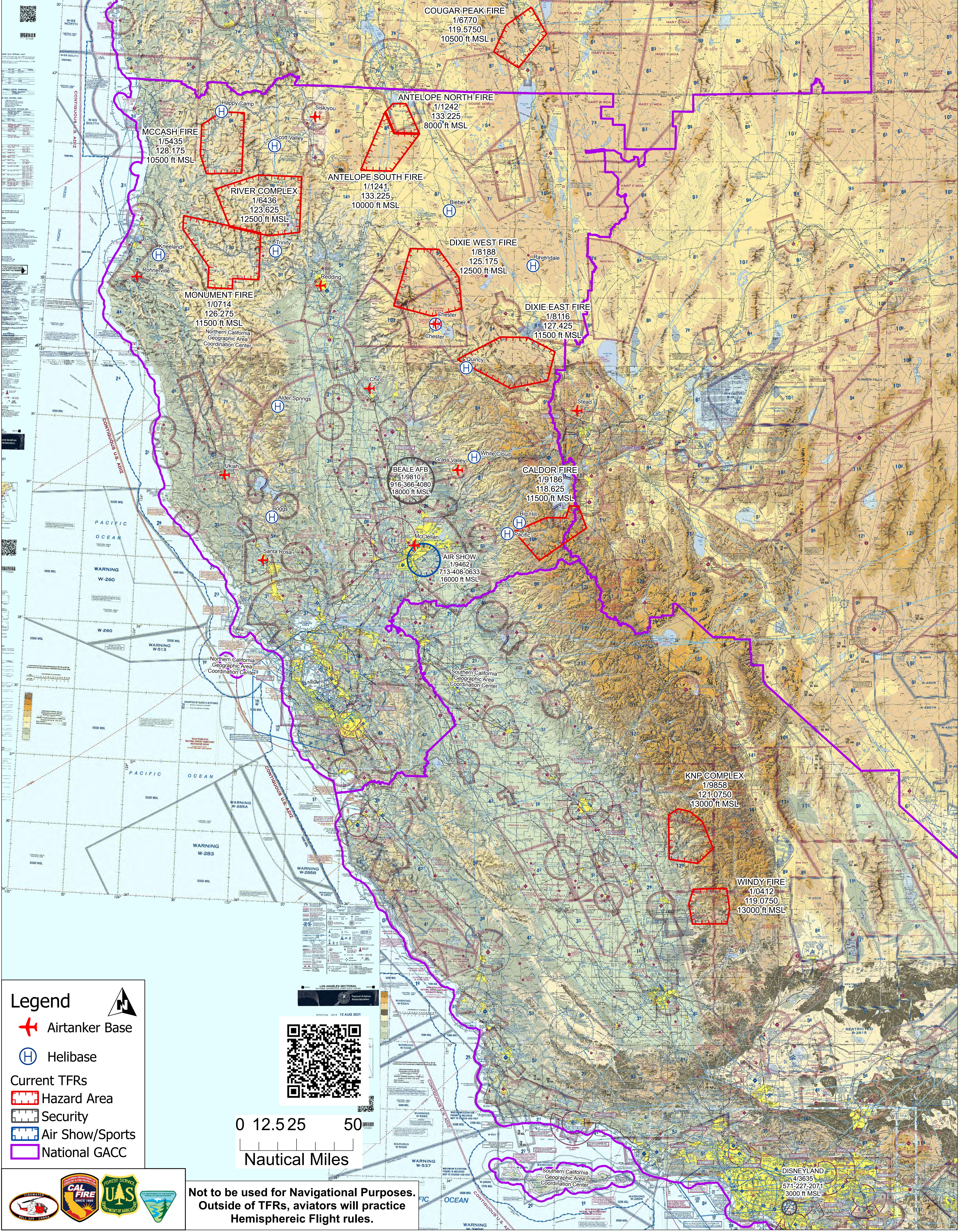
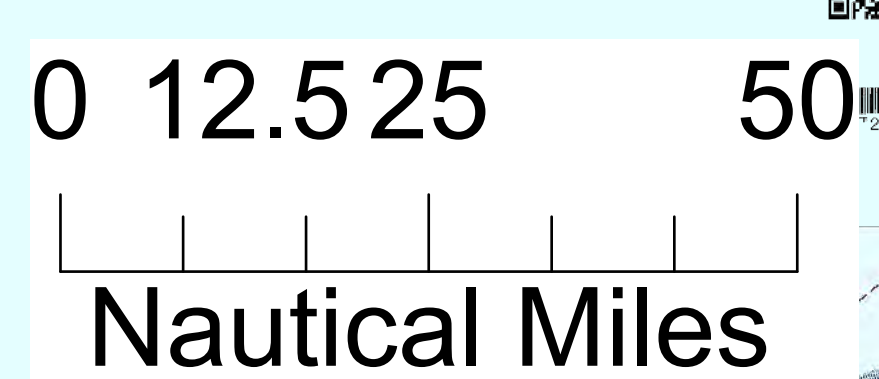


# Region 5 Aviation Map 20210921



**Legend**

- Airtanker Base
- Helibase
- Current TFRs**
- Hazard Area
- Security
- Air Show/Sports
- National GACC



**Not to be used for Navigational Purposes.  
Outside of TFRs, aviators will practice  
Hemispheric Flight rules.**

**COUGAR PEAK FIRE**  
1/6770  
119.5750  
10500 ft MSL

**ANTELOPE NORTH FIRE**  
1/1242  
133.225  
8000 ft MSL

**MCCASH FIRE**  
1/5435  
128.175  
10500 ft MSL

**ANTELOPE SOUTH FIRE**  
1/1241  
133.225  
10000 ft MSL

**RIVER COMPLEX**  
1/6436  
123.625  
12500 ft MSL

**DIXIE WEST FIRE**  
1/8188  
125.175  
12500 ft MSL

**MONUMENT FIRE**  
1/0714  
126.275  
11500 ft MSL  
Northern California  
Geographic Area  
Coordination Center

**DIXIE EAST FIRE**  
1/8116  
127.425  
11500 ft MSL

**BEALE AFB**  
1/9810  
916-366-4080  
18000 ft MSL

**CALDOR FIRE**  
1/9186  
118.625  
11500 ft MSL

**AIR SHOW**  
1/9462  
713-408-0633  
16000 ft MSL

**KNP COMPLEX**  
1/9858  
121.0750  
13000 ft MSL

**WINDY FIRE**  
1/0412  
119.0750  
13000 ft MSL

**DISNEYLAND**  
4/3635  
571-227-2071  
3000 ft MSL