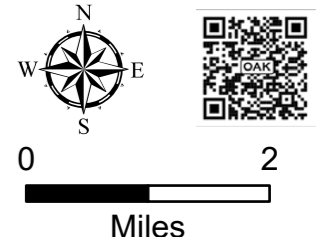


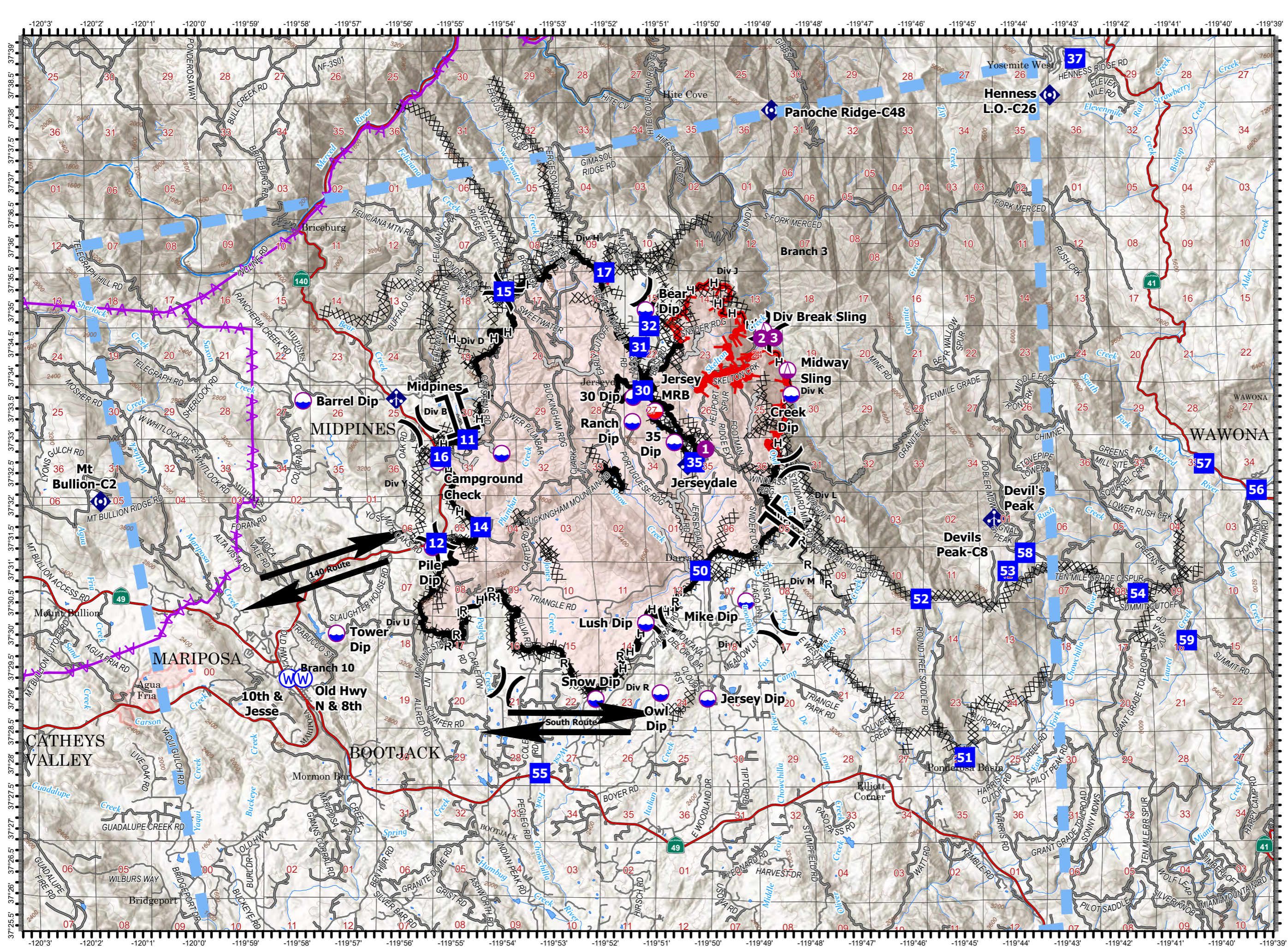
# Pilot Map

Oak Incident  
CA-MMU-016149  
August 3, 2022

- TFR
- Transmission Lines
- Helispot
- Helibase
- Sling Site
- Division Break
- Branch Break
- Drop Point
- Mobile Weather Unit
- Repeater
- Water Source
- Completed Dozer Line
- Completed Hand Line
- Completed Road as Line
- Access or Improved Road
- Contained Line
- Uncontained Line
- County Boundary
- Wildfire Daily Fire Perimeter
- Aviation Check Point
- Dip Site
- Mobile Retardant Base
- Air Ops Routes



IMT 5  
8/2/2022  
1931 Hours



Point	Latitude	Longitude
Helispot 1	37° 32.865' N	119° 50.034' W
Helispot 2	37° 34.577' N	119° 48.938' W
Helispot 3	37° 34.588' N	119° 48.693' W
30 Dip	37° 33.672' N	119° 51.444' W
35 Dip	37° 32.970' N	119° 50.641' W
Barrel Dip	37° 33.620' N	119° 57.881' W
Bear Dip	37° 35.020' N	119° 51.201' W
Creek Dip	37° 33.710' N	119° 48.363' W
Dock Dip	37° 32.800' N	119° 54.011' W
Jersey Dip	37° 29.000' N	119° 50.001' W
Lush Dip	37° 30.176' N	119° 51.205' W
Mike Dip	37° 30.510' N	119° 49.251' W
Owl Dip	37° 29.090' N	119° 50.921' W
Pile Dip	37° 31.350' N	119° 55.361' W
Ranch Dip	37° 33.290' N	119° 51.461' W
Snow Dip	37° 29.000' N	119° 52.181' W
Tower Dip	37° 30.020' N	119° 57.231' W
Jersey MRB	37° 33.455' N	119° 51.021' W
DP-11	37° 33.019' N	119° 54.672' W
DP-12	37° 31.418' N	119° 55.282' W
DP-14	37° 31.663' N	119° 54.421' W
DP-16	37° 32.752' N	119° 55.196' W
DP-17	37° 35.602' N	119° 52.005' W
DP-30	37° 33.775' N	119° 51.256' W
DP-31	37° 34.445' N	119° 51.318' W
DP-32	37° 34.773' N	119° 51.131' W
DP-35	37° 32.664' N	119° 50.249' W
DP-37	37° 38.898' N	119° 42.807' W
DP-50	37° 30.956' N	119° 49.989' W
DP-51	37° 28.086' N	119° 44.994' W
DP-52	37° 30.546' N	119° 45.783' W
DP-53	37° 30.969' N	119° 44.147' W
DP-54	37° 30.619' N	119° 41.613' W
DP-55	37° 27.854' N	119° 53.270' W
DP-56	37° 32.214' N	119° 39.294' W
DP-57	37° 32.626' N	119° 40.316' W
DP-58	37° 31.250' N	119° 43.809' W
DP-59	37° 29.890' N	119° 40.664' W
Mariposa Helibase	37° 30.610' N	120° 02.371' W
Midway Sling	37° 34.083' N	119° 48.433' W
Div Break Sling	37° 34.698' N	119° 48.901' W