

Pilot Map

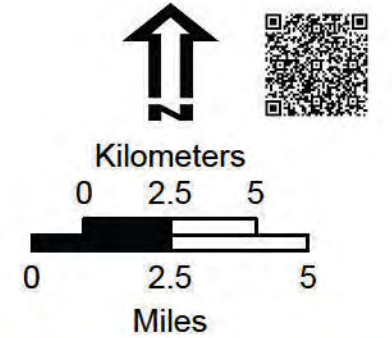
McKinney Fire

CA-KNF-006177

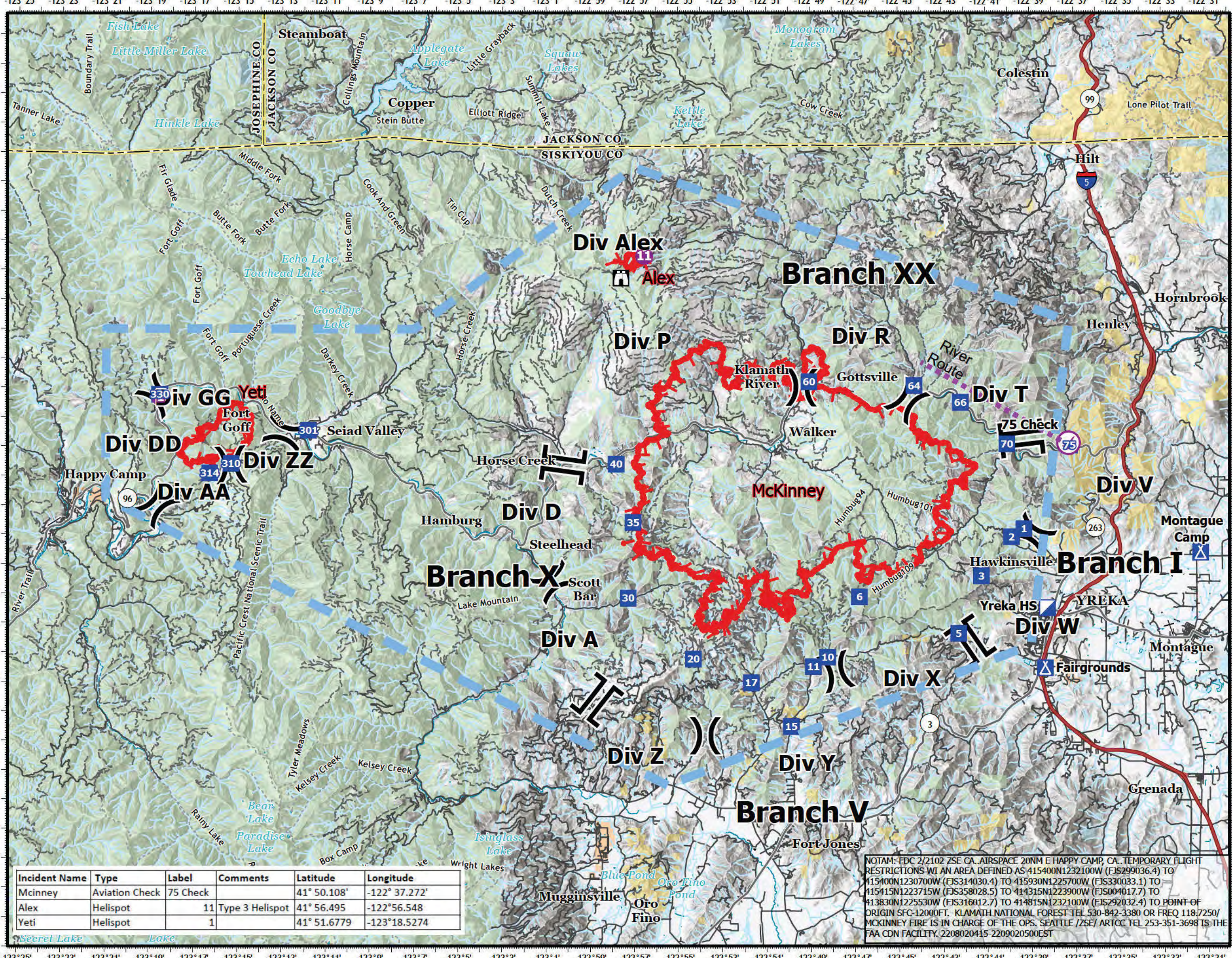
August 3, 2022
56,459 acres at 8/2/22 at 13:00

- Aviation Check Point
- Helispot
- Division Break
- Branch Break
- Incident Command Post
- Drop Point
- Camp
- Lookout
- Uncontained
- Aviation Route
- Temporary Flight Restriction

- Surface Management by Agency
- Bureau of Indian Affairs (BIA)
 - Bureau of Land Management (BLM)
 - Department of Defense (DOD)
 - State
 - US Forest Service (USFS)



1:220,000
Datum: North American 1983



Incident Name	Type	Label	Comments	Latitude	Longitude
McKinney	Aviation Check	75 Check		41° 50.108'	-122° 37.272'
Alex	Helispot	11	Type 3 Helispot	41° 56.495	-122° 56.548
Yeti	Helispot	1		41° 51.6779	-123° 18.5274

NOTAM: FDC 2/2102 ZSE CA. AIRSPACE 20NM E HAPPY CAMP, CA. TEMPORARY FLIGHT RESTRICTIONS WI AN AREA DEFINED AS 415400N1232100W (FJS299036.4) TO 415400N1230700W (FJS314030.4) TO 415930N1225700W (FJS330033.1) TO 415415N1223715W (FJS358028.5) TO 414315N1223900W (FJS004017.7) TO 413830N1225530W (FJS316012.7) TO 414815N1232100W (FJS292032.4) TO POINT OF ORIGIN SFC-12000FT. KLAMATH NATIONAL FOREST TEL 530-842-3380 OR FREQ 118.7250/ MCKINNEY FIRE IS IN CHARGE OF THE OPS. SEATTLE /ZSE/ ARTCC TEL 253-351-3698 IS THE FAA CDN FACILITY. 2208020415-2209020500EST