

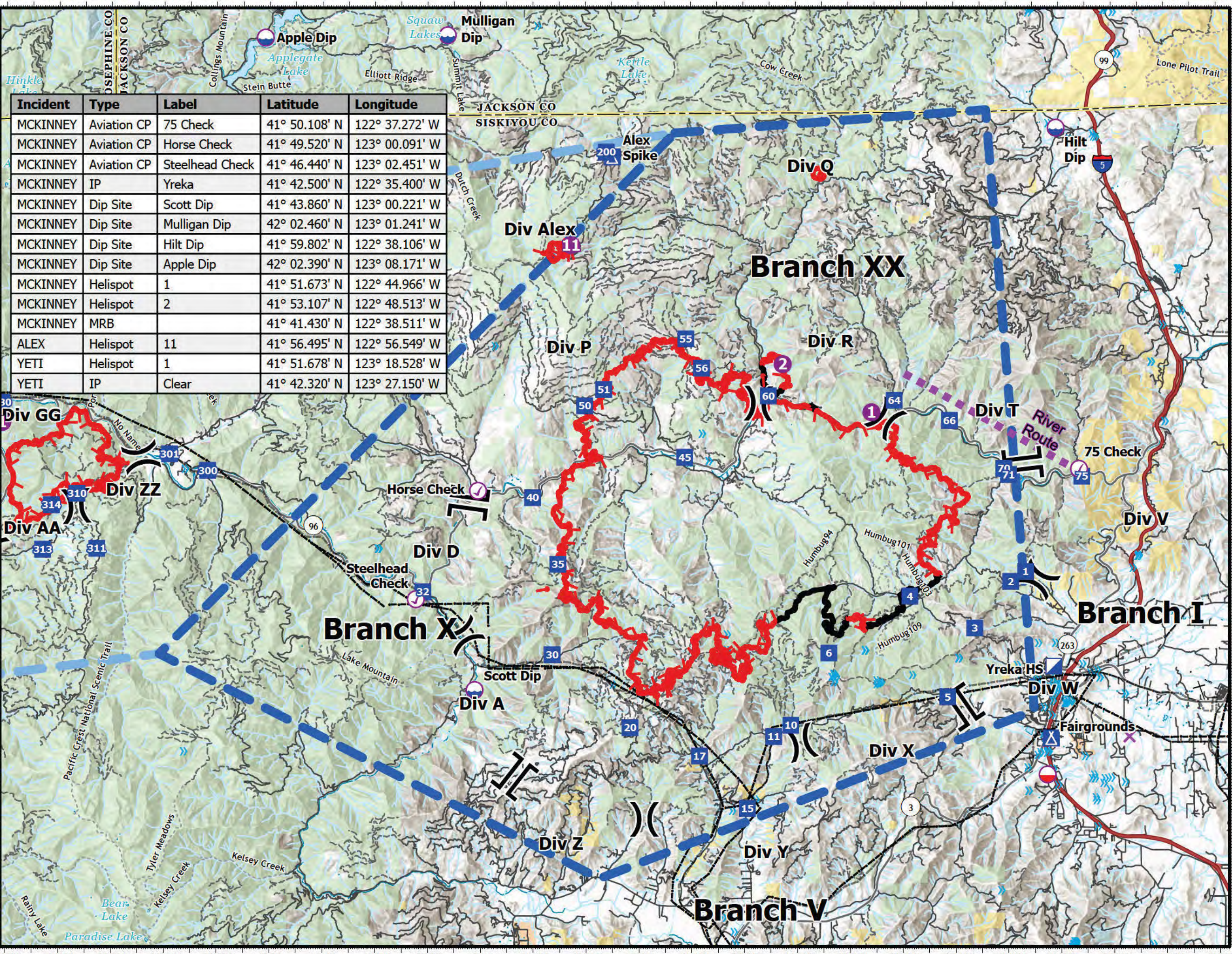
Pilot Map

McKinney Fire

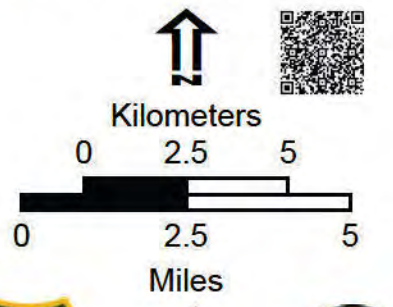
CA-KNF-006177

August 5, 2022
58,668 acres at 8/3/22 at 21:37

Incident	Type	Label	Latitude	Longitude
MCKINNEY	Aviation CP	75 Check	41° 50.108' N	122° 37.272' W
MCKINNEY	Aviation CP	Horse Check	41° 49.520' N	123° 00.091' W
MCKINNEY	Aviation CP	Steelhead Check	41° 46.440' N	123° 02.451' W
MCKINNEY	IP	Yreka	41° 42.500' N	122° 35.400' W
MCKINNEY	Dip Site	Scott Dip	41° 43.860' N	123° 00.221' W
MCKINNEY	Dip Site	Mulligan Dip	42° 02.460' N	123° 01.241' W
MCKINNEY	Dip Site	Hilt Dip	41° 59.802' N	122° 38.106' W
MCKINNEY	Dip Site	Apple Dip	42° 02.390' N	123° 08.171' W
MCKINNEY	Helispot	1	41° 51.673' N	122° 44.966' W
MCKINNEY	Helispot	2	41° 53.107' N	122° 48.513' W
MCKINNEY	MRB		41° 41.430' N	122° 38.511' W
ALEX	Helispot	11	41° 56.495' N	122° 56.549' W
YETI	Helispot	1	41° 51.678' N	123° 18.528' W
YETI	IP	Clear	41° 42.320' N	123° 27.150' W



- Aviation Check Point
- Dip Site
- Mobile Retardant Base
- Helispot
- Division Break
- Branch Break
- Incident Command Post
- Drop Point
- Camp
- Intersection Points
- Aviation Route
- TFR:2/4347
- TFR:2/4348
- Contained
- Uncontained
- Powerline
- Bridge/Ovepass/Viaduct
- Military Training Route
- Telephone Line/Telegraph Line
- Power Transmission Line
- Power Transmission Line
- Tower
- Bureau of Indian Affairs (BIA)
- Bureau of Land Management (BLM)
- State
- US Forest Service (USFS)



1:185,000
Datum: North American 1983