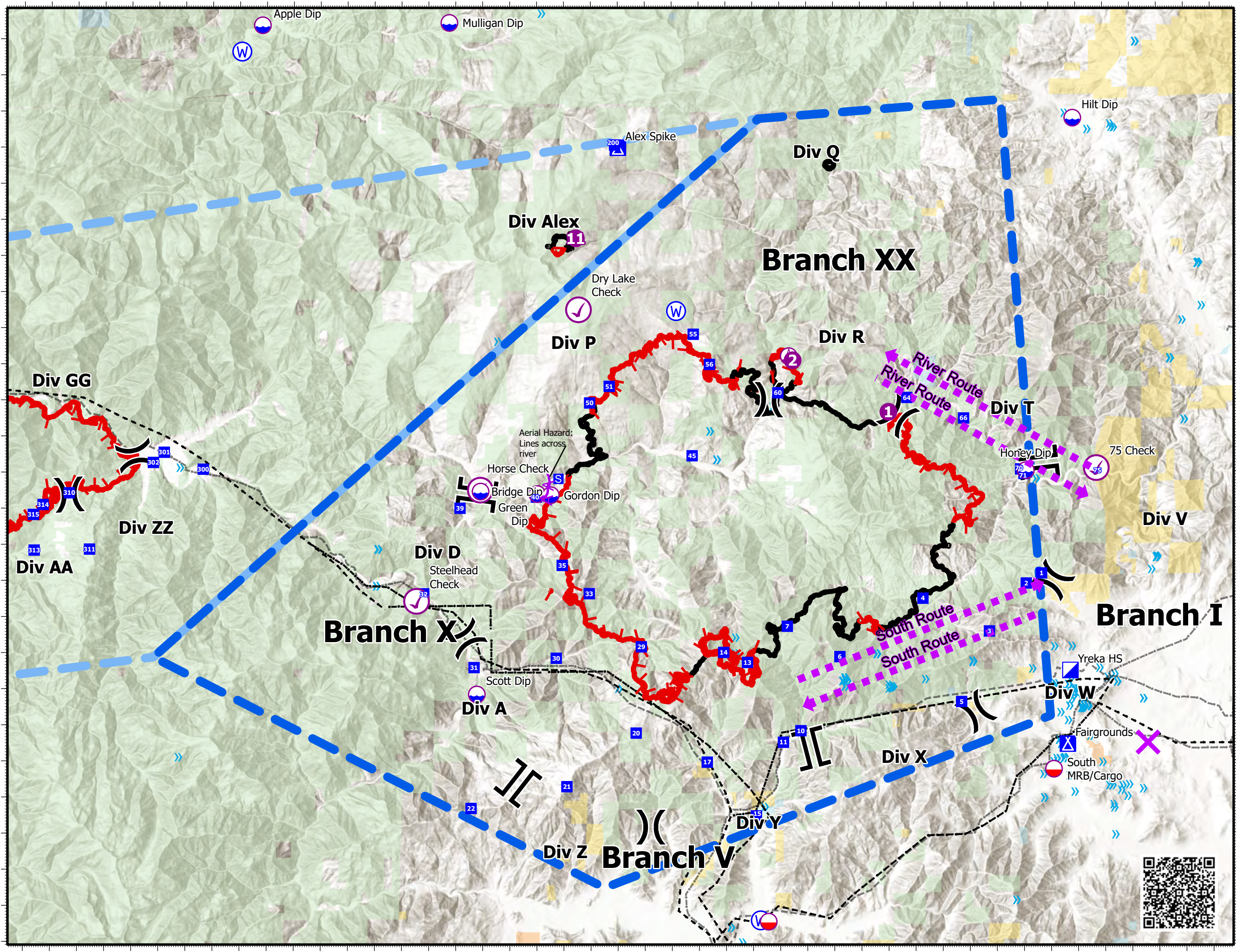


Pilot Map

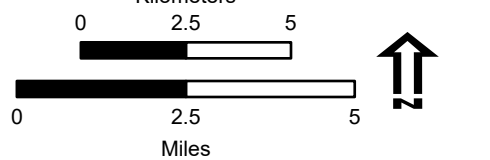
McKinney Fire

CA-KNF-006177

August 7, 2022
60,078 acres at 8/5/22 at 21:00



- Aviation Check Point
- Dip Site
- Mobile Retardant Base
- Helispot
- Sling Site
- Division Break
- Branch Break
- Incident Command Post
- Drop Point
- Camp
- Staging Area
- Water Source
- Intersection Points
- Aerial Hazard
- Aviation Route
- TFR:2/4959
- TFR:2/4960
- Contained
- Uncontained
- Powerline
- Bridge/Ovepass/Viaduct
- Military Training Route
- Telephone Line/Telegraph Line
- Power Transmission Line
- Power Transmission Line
- Tower
- Bureau of Indian Affairs (BIA)
- Bureau of Land Management (BLM)
- State
- US Forest Service (USFS)



Logos for the US Forest Service, CAL FIRE, and a QR code. Below the logos, the scale is given as 1:180,000 and the datum as North American 1983.

IncidentName	FeatureCategory	Label	LatWGS84_DDM	LongWGS84_DDM
YETI	Helispot	1	+41° 51.67788967'	-123° 18.52743443'
ALEX	Helispot	11	+41° 56.49531285'	-122° 56.54883201'
MCKINNEY	Aviation Check Point	75 Check	41° 50.108' N	122° 37.272' W
MCKINNEY	Helispot	1	41° 51.673' N	122° 44.966' W
MCKINNEY	Dip Site	Scott Dip	41° 43.860' N	123° 00.221' W
MCKINNEY	Helispot	2	41° 53.107' N	122° 48.513' W
MCKINNEY	Dip Site	Hilt Dip	41° 59.802' N	122° 38.106' W
MCKINNEY	Dip Site	Mulligan Dip	42° 02.460' N	123° 01.241' W
MCKINNEY	Dip Site	Apple Dip	42° 02.390' N	123° 08.171' W
MCKINNEY	Aviation Check Point	Steelhead Check	41° 46.440' N	123° 02.451' W
MCKINNEY	Aviation Check Point	Horse Check	41° 49.520' N	123° 00.091' W
MCKINNEY	Dip Site	Green Dip	41° 49.410' N	122° 57.980' W
MCKINNEY	Dip Site	Bridge Dip	41° 49.480' N	123° 00.080' W
MCKINNEY	Dip Site	Gordon Dip	41° 49.380' N	122° 57.480' W
MCKINNEY	Dip Site	Honey Dip	41° 50.043' N	122° 39.884' W
MCKINNEY	Mobile Retardant Base	South MRB/Cargo		
MCKINNEY	Aviation Check Point	Dry Lake Check		
MCKINNEY	Sling Site			
MCKINNEY	Mobile Retardant Base			