

Air Ops Map

Yeti Fire

CA-KNF-006200

Alex Fire

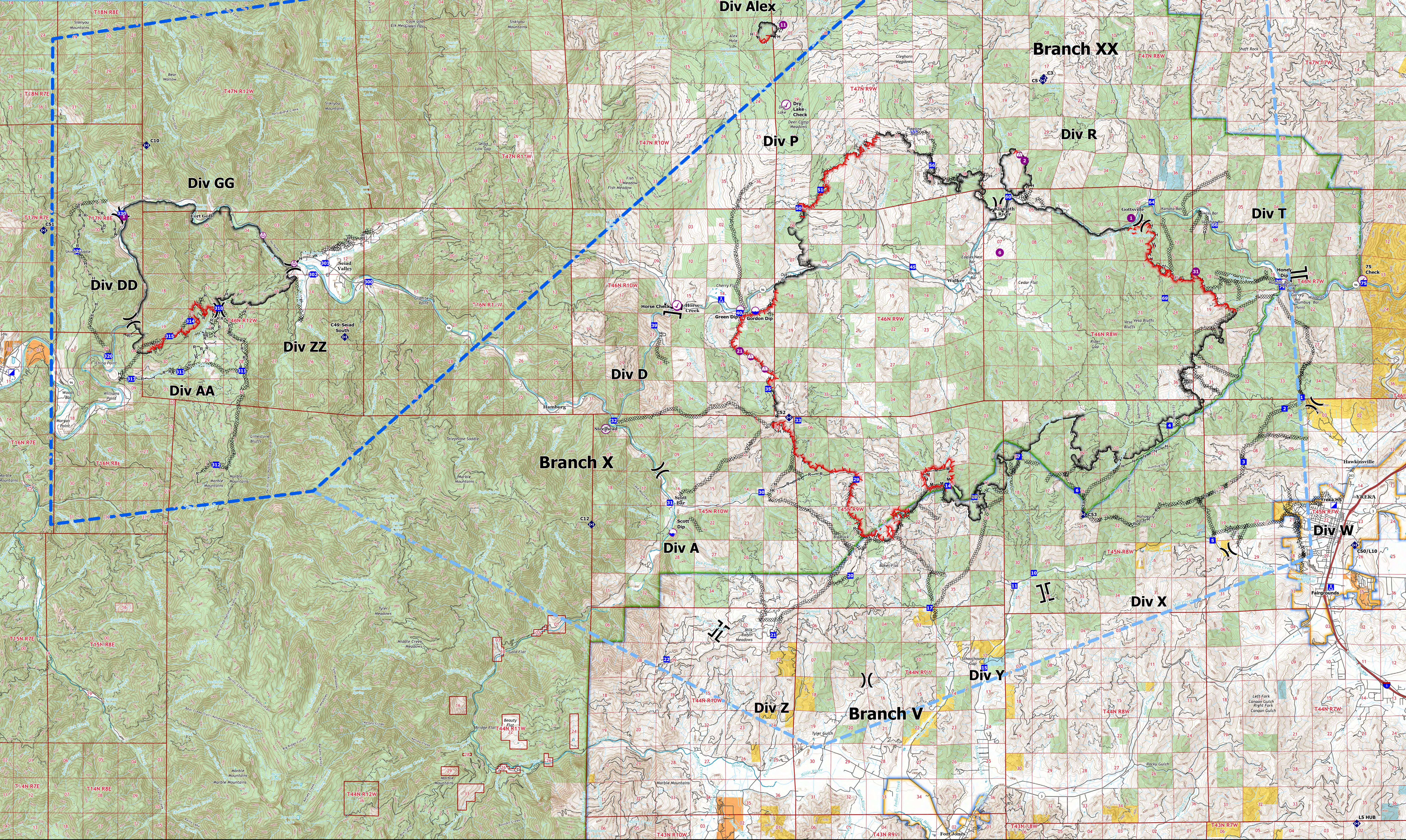
CA-KNF-006290

August 10, 2022

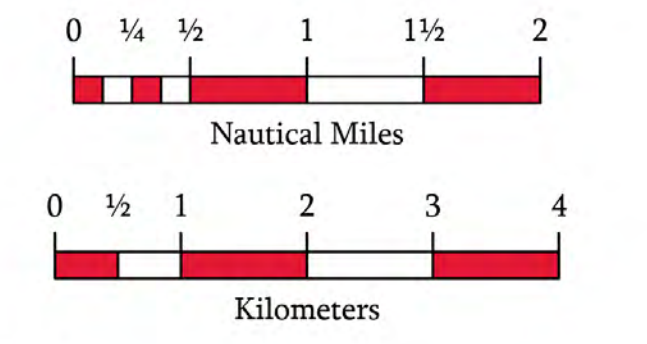
7,886 acres on 8/9 at 22:32

151 acres on 8/9 at 22:39

Incident Name	FC Point Type	Label	Latitude WGS84 DDM	Longitude WGS84 DDM
ALEX	Camp	Alex Spike	+41° 59.00243307	-122° 54.98161140
ALEX	Helispot	11	+41° 56.49531285	-122° 57.37272
MCKINNEY	Aviation Check Point	75 Check	41° 50.108' N	122° 37.272' W
MCKINNEY	Aviation Check Point	Dry Lake Check	41° 54.514' N	122° 56.451' W
MCKINNEY	Aviation Check Point	Horse Check	41° 49.520' N	123° 00.091' W
MCKINNEY	Aviation Check Point	Steelhead Check	41° 46.440' N	123° 02.451' W
MCKINNEY	Camp	Fairgrounds	41° 42.465' N	122° 38.365' W
MCKINNEY	Camp	Klamath River Spike	41° 49.659' N	122° 58.617' W
MCKINNEY	Camp	Montezuma Camp	41° 43.863' N	122° 31.282' W
MCKINNEY	Dip Site	Apple Dip	42° 02.390' N	123° 08.171' W
MCKINNEY	Dip Site	Bridge Dip	41° 49.480' N	123° 00.081' W
MCKINNEY	Dip Site	Gordon Dip	41° 49.380' N	122° 57.481' W
MCKINNEY	Dip Site	Green Dip	41° 49.410' N	122° 57.981' W
MCKINNEY	Dip Site	Hilt Dip	41° 59.802' N	122° 38.106' W
MCKINNEY	Dip Site	Honey Dip	41° 50.044' N	122° 39.885' W
MCKINNEY	Dip Site	Mulligan Dip	42° 03.210' N	123° 01.241' W
MCKINNEY	Dip Site	Scott Dip	41° 48.350' N	123° 02.231' W
MCKINNEY	Helispot	3	41° 51.673' N	122° 44.966' W
MCKINNEY	Helispot	2	41° 53.107' N	122° 48.513' W
MCKINNEY	Helispot	21	41° 48.380' N	122° 58.002' W
MCKINNEY	Helispot	31	41° 50.338' N	122° 42.816' W
MCKINNEY	Helispot	6	41° 50.822' N	122° 49.346' W
MCKINNEY	Incident Command Post	Treka HS	41° 44.505' N	122° 38.261' W
MCKINNEY	Repeater	AC Link	41° 48.062' N	123° 02.294' W
MCKINNEY	Repeater	C12	41° 44.062' N	123° 02.524' W
MCKINNEY	Repeater	C5	41° 55.100' N	122° 47.902' W
MCKINNEY	Repeater	C50/L10	41° 43.512' N	122° 37.570' W
MCKINNEY	Repeater	C52	41° 46.725' N	122° 56.364' W
MCKINNEY	Repeater	C53	41° 44.299' N	122° 46.595' W
MCKINNEY	Repeater	LS HUB	41° 36.581' N	122° 37.541' W
MCKINNEY	Sling Site	4	41° 47.924' N	122° 57.166' W
MCKINNEY	Sling Site	1	41° 48.350' N	123° 02.231' W
MCKINNEY	Sling Site	41	41° 53.243' N	122° 48.684' W
YETI	Aerial Hazard		+41° 50.54700002	-123° 12.83600000
YETI	Aerial Hazard		+41° 51.24799997	-123° 13.87200002
YETI	Helispot	1	+41° 51.70390256	-123° 18.50811515
YETI	Incident Command Post		+41° 47.81319141	-123° 22.22824027
YETI	Repeater	C10	+41° 53.47700002	-123° 17.76399997
YETI	Repeater	C3	+41° 55.16431366	-123° 07.68883047
YETI	Repeater	C49-Seiad South	+41° 48.71900001	-123° 11.14499997
YETI	Repeater	C51	+41° 51.34999998	-123° 21.18000000



- TFR: 2/4959
- TFR: 2/4960
- Intersection Points
- Aerial Hazard
- Aviation Check Point
- Dip Site
- Helispot
- Sling Site
- Division Break
- Branch Break
- Incident Command Post
- Drop Point
- Camp
- Repeater
- Contained
- Uncontained
- Completed Dozer Line
- Completed Hand Line
- Completed Mixed Construction Line
- Completed Road as Line
- Direct Protection Areas by Agency
- CDF
- LOCAL
- USFS
- Surface Management by Agency
- Bureau of Indian Affairs (BIA)
- Bureau of Land Management (BLM)
- Department of Defense (DOD)
- National Park Service (NPS)
- State
- US Forest Service (USFS)



California Interagency Incident Management Team

1:60,000

Datum: North American 1983